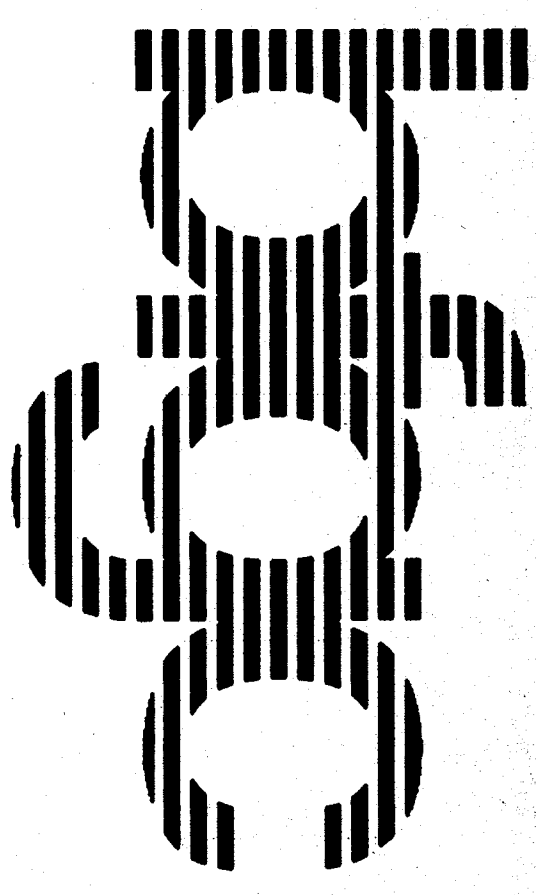


**PARTIAL DEMOLITION REFLECTED CEILING PLAN BUILDING B**

LEGEND	
	(E) 2' x 4' ACOUSTIC TILE
	(E) 1' x 1' ACOUSTIC TILE
	GYP. BOARD CEILING (SMOOTH FINISH)
	GYP. BOARD CEILING (ROUGH FINISH)
	EXPOSED ABOVE OR EXISTING CEILING TO FINISH SCHEDULE
	RECESSED ELEC. FIXTURE
	ELEC. FIXTURE SURFACE MID.
	ELEC. FIXTURE RECESSED SURFACE MID.
	ELEC. FIXTURE SURFACE MID.
	ELEC. FIXTURE SURFACE MID.
	(E) SUPPLY AIR DIFFUSER
	(E) RETURN AIR GRILLE
	(E) EXHAUST AIR GRILLE
	ILLUMINATED EXIT SIGN
	ARROW INDICATES DIRECT.



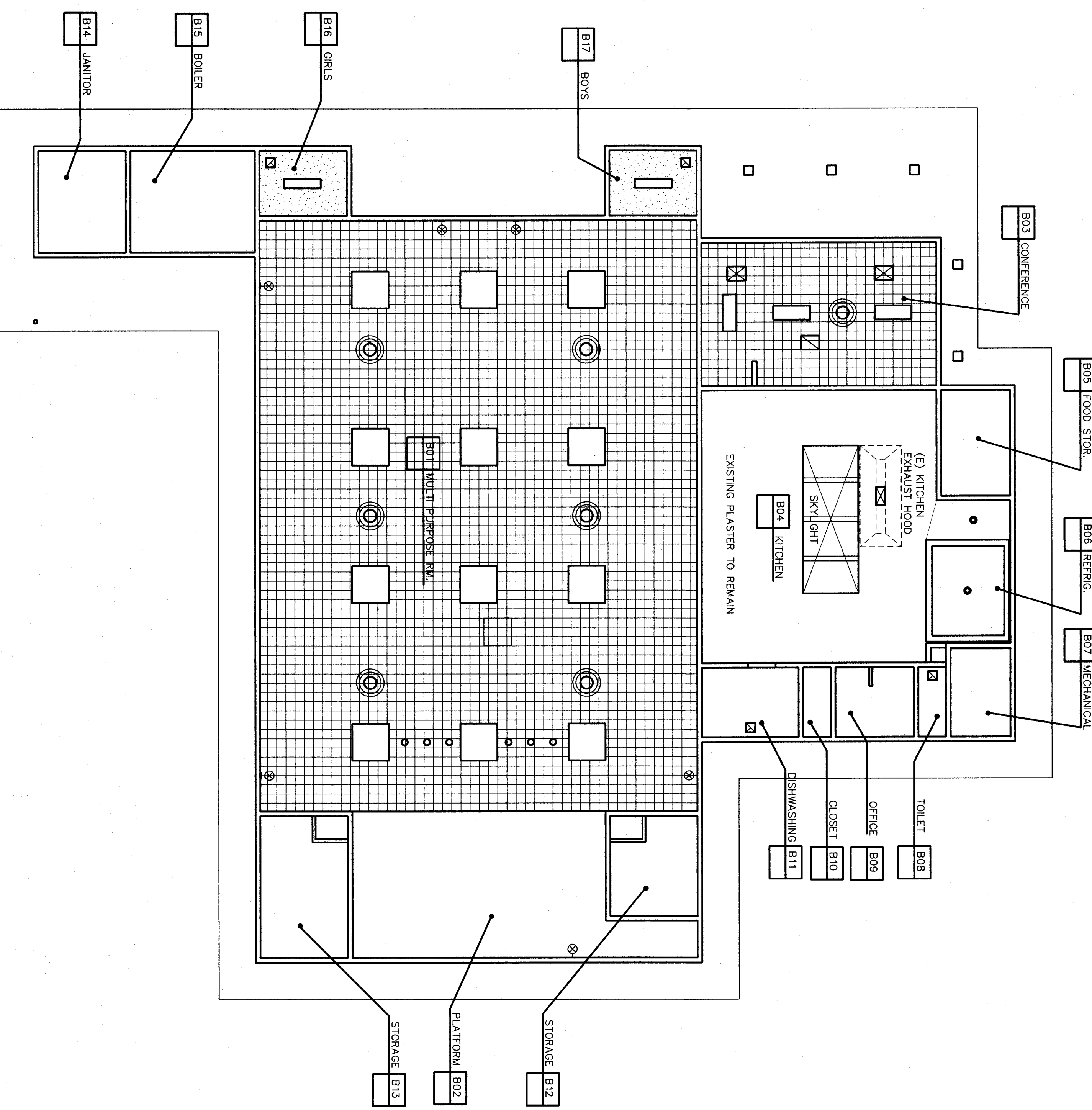
**bfgc architects planners inc.**  
**Bakersfield**  
 5500 ming avenue, suite 450, bakersfield ca 93309-4631  
 805 838-4300 fax 805 838-4311

san luis obispo  
 3201 board street suite 113  
 san luis obispo, california 95401  
 505 542-0450  
 san jose  
 800 west santa ana drive st. suite 525  
 san jose, california 95128  
 408 524-0841

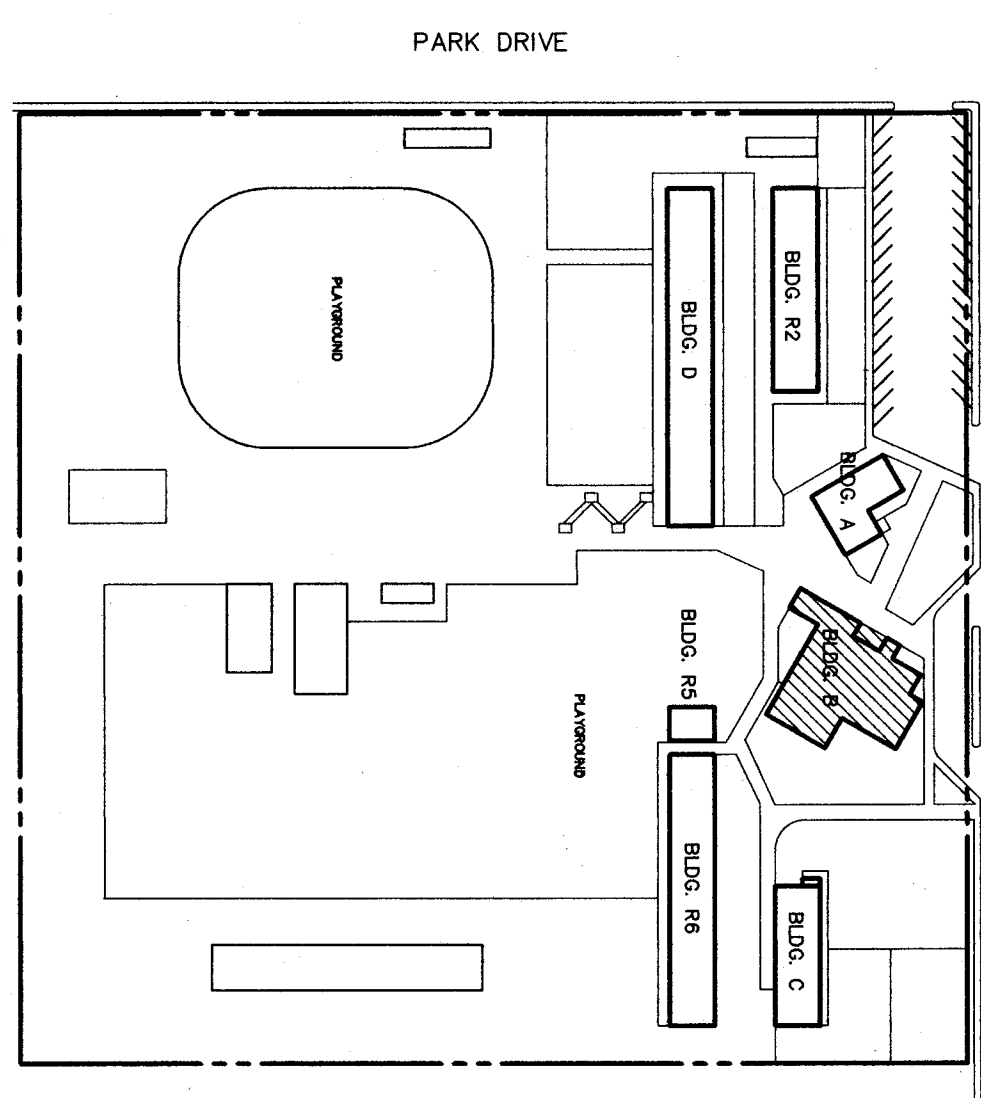
principal architect  
 david r. carroll, aia, C-6354  
 david a. gregg, aia, C-8122  
 robert l. hughes, aia, C-76134  
 william f. kochel, aia, C-8702

design architect  
 david a. gregg, aia, C-8122  
 robert l. hughes, aia, C-76134  
 william f. kochel, aia, C-8702

DATE: 08-07-88



**REFLECTED CEILING PLAN BUILDING B**



**KEY PLAN**

**HORT SCHOOL  
 MODERNIZATION  
 BAKERSFIELD CITY  
 SCHOOL DISTRICT**

2301 PARK DRIVE  
 BAKERSFIELD, CA. 93306

**REFLECTED CEILING PLAN**

**BUILDING B**  
 1/8" = 1'-0"

job no.	97-276
date	JULY 8, 88
drawn by	J.L.G.
checked by	ROB T.
copyright	1988

**8.02**

**8.02**

DATE: 08-07-88  
 DRAWN: J.L.G.  
 CHECKED: ROB T.  
 COPYRIGHT: 1988