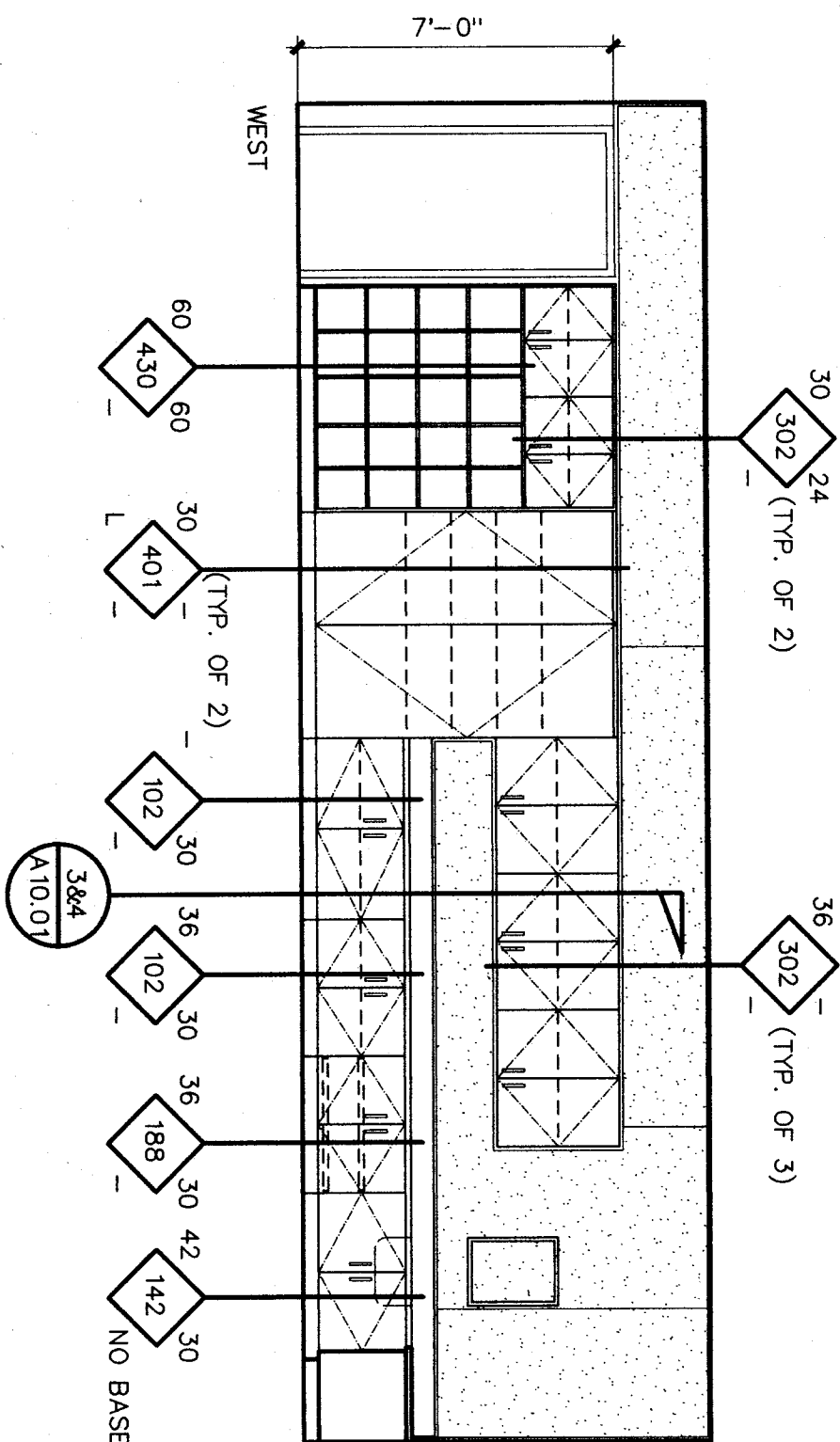
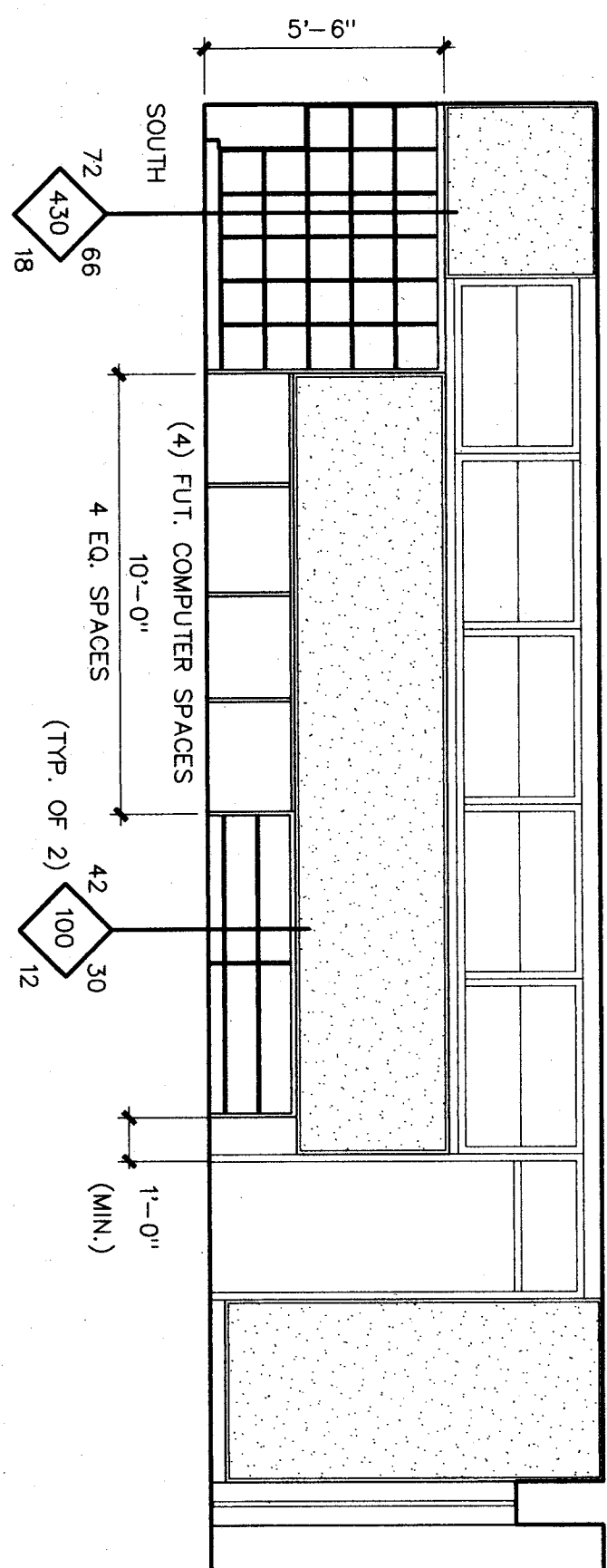
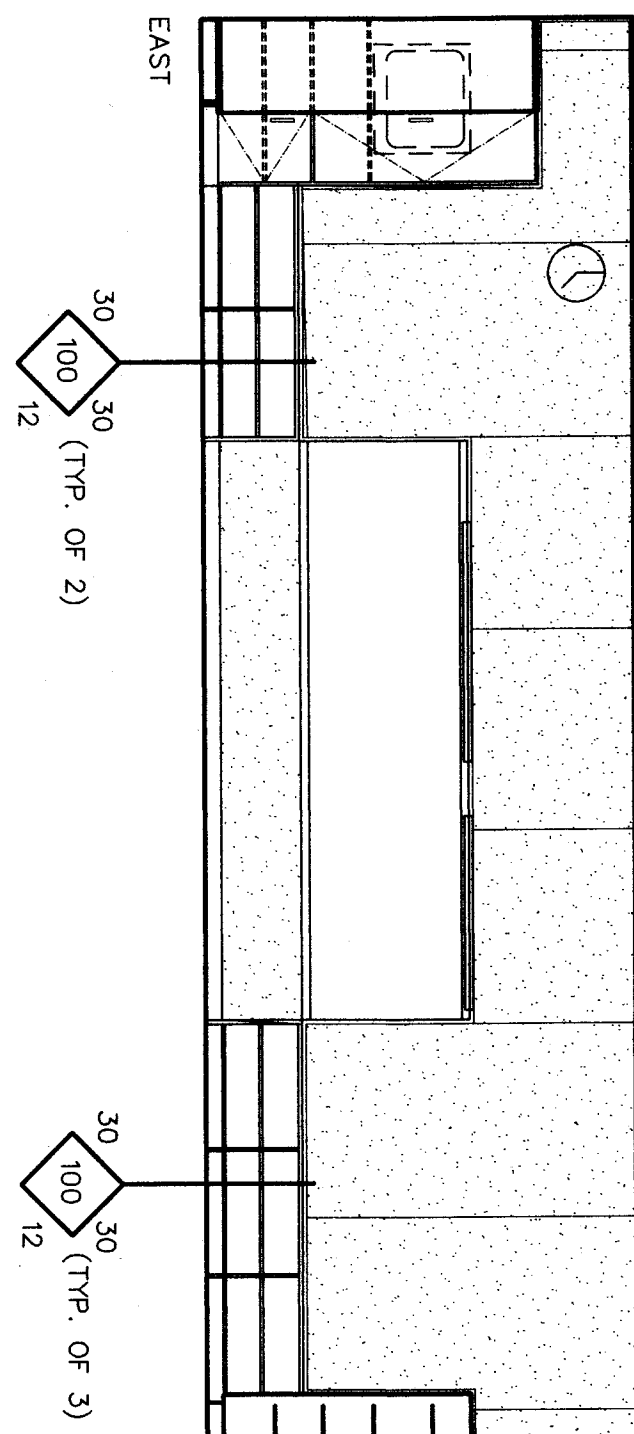
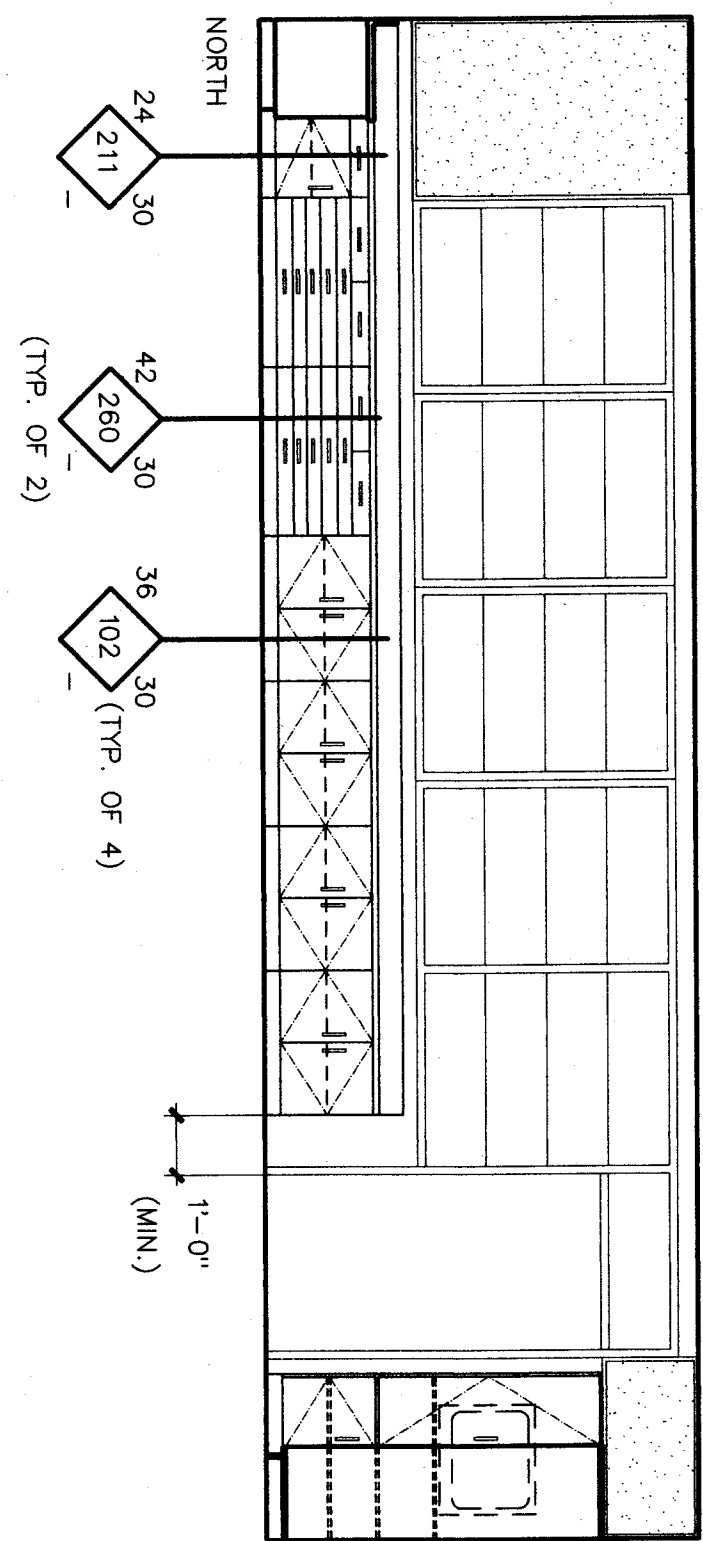
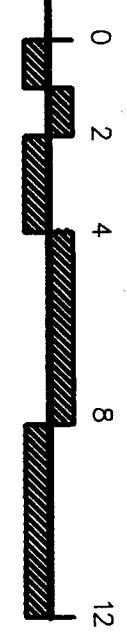


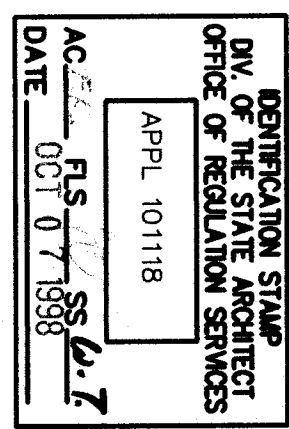
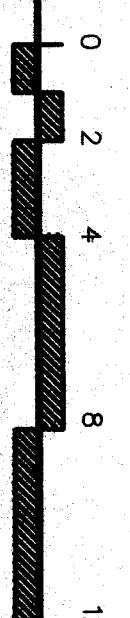
**CLASSROOM INTERIOR ELEVATIONS - ROOM R601**

REFER TO DETAILS 2, 3, & 4 / A10.01 FOR CABINET ANCHORAGE.



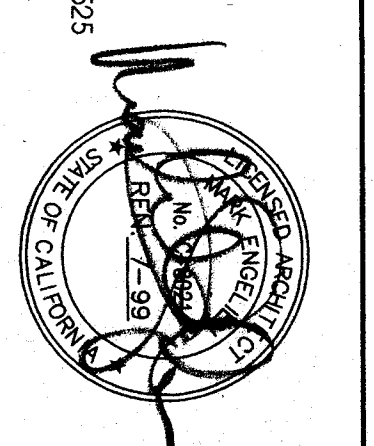
**CLASSROOM INTERIOR ELEVATIONS - ROOM R602**

REFER TO DETAILS 2, 3, & 4 / A10.01 FOR CABINET ANCHORAGE.



**bfgc architects planners inc.**  
**bakersfield**  
 5500 ming avenue, suite 450, bakersfield, ca, 93309-4831  
 805 836-4300 fax 805 836-4311

san luis obispo  
 320 broad street, suite 118  
 805 946-0432  
 san jose  
 160 west santa ana st., suite 525  
 san jose, california 95131  
 408 624-0341  
 principal architect  
 david l. central, s.a. C-65564  
 david l. gomez, s.a. C-81221  
 william f. fuchsel, s.a. C-87102  
 dean a. thompson, s.a. C-81890  
 brian a. hogan, s.a. C-10801  
 robert l. mack, s.a. C-18079



**HORT SCHOOL  
 MODERNIZATION  
 BAKERSFIELD CITY  
 SCHOOL DISTRICT**

2301 PARK DRIVE  
 BAKERSFIELD, CA, 93306

**INTERIOR ELEVATIONS**

**BUILDING R6**  
 1/4" = 1'-0"

job no.	97-276
date	MAY 6, 98
drawn by	J.L.G.
chk'd by	RFB T.
copyright	1998

