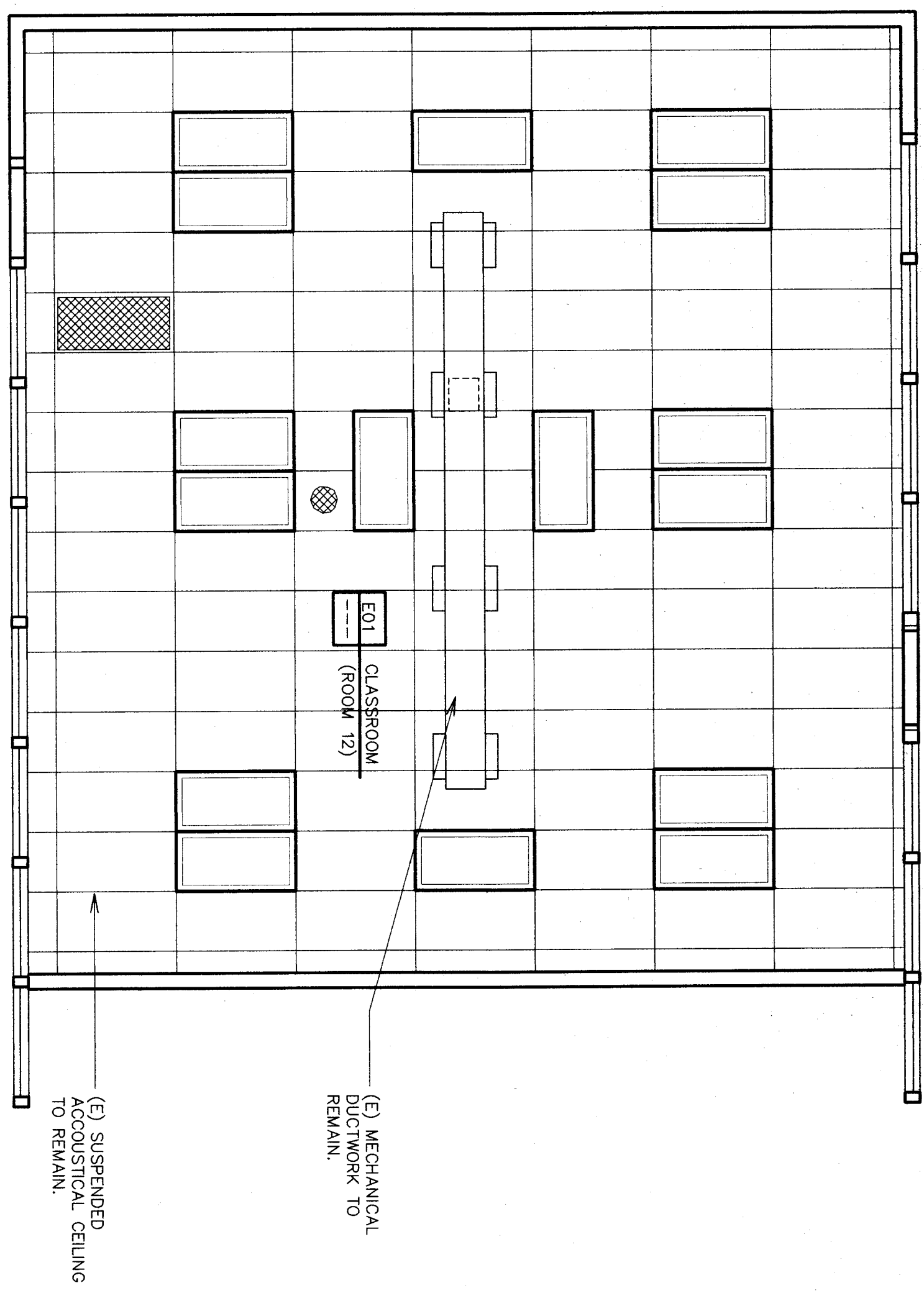
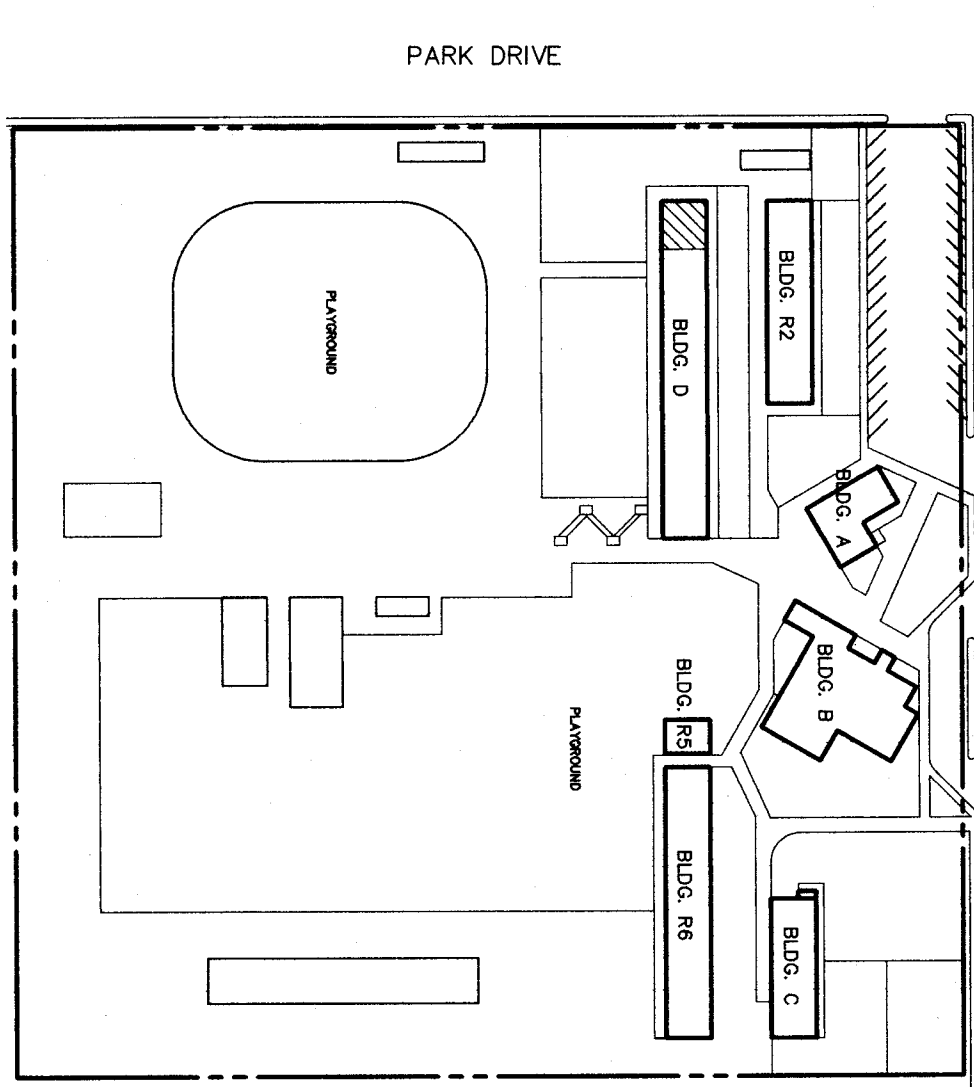
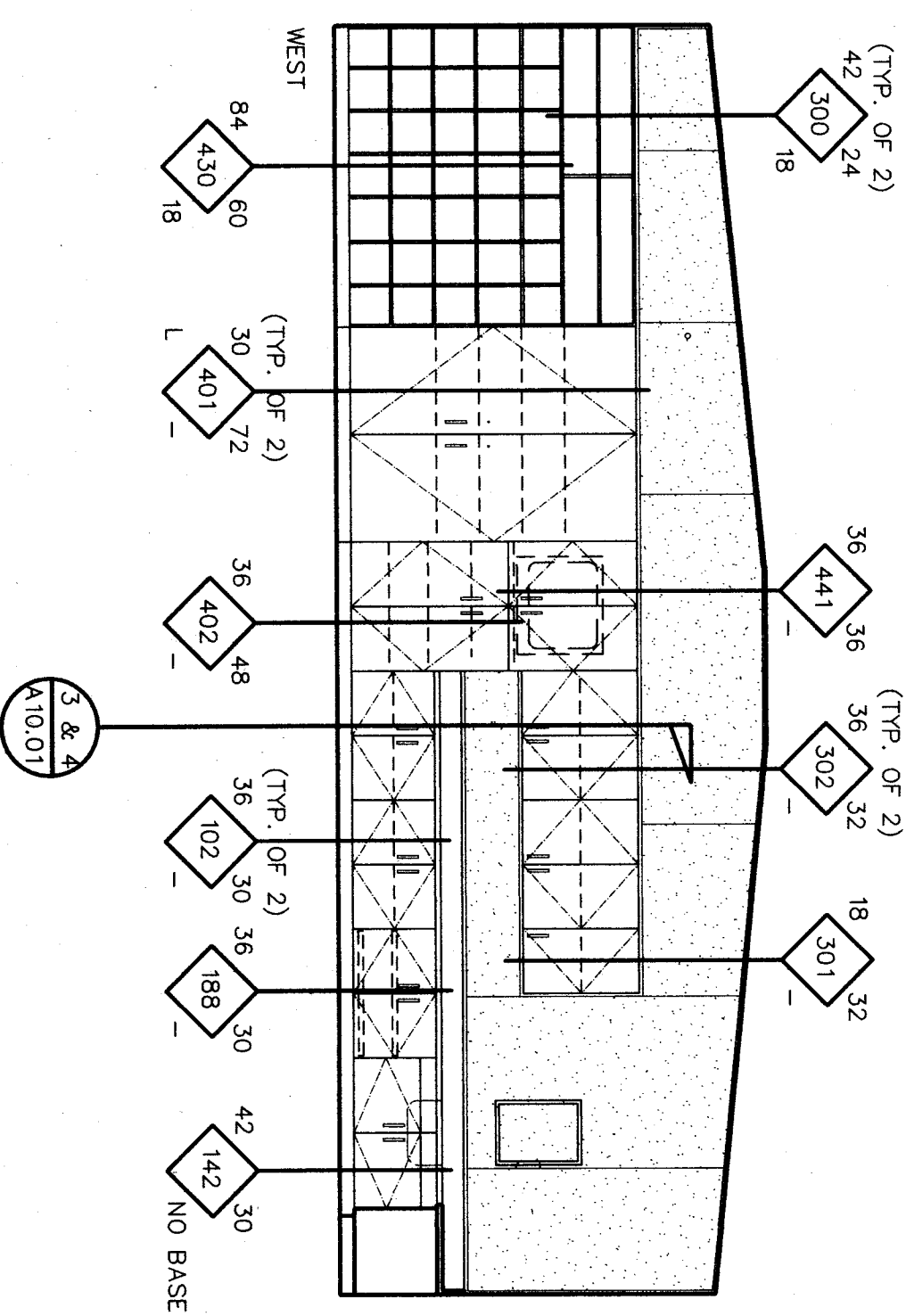
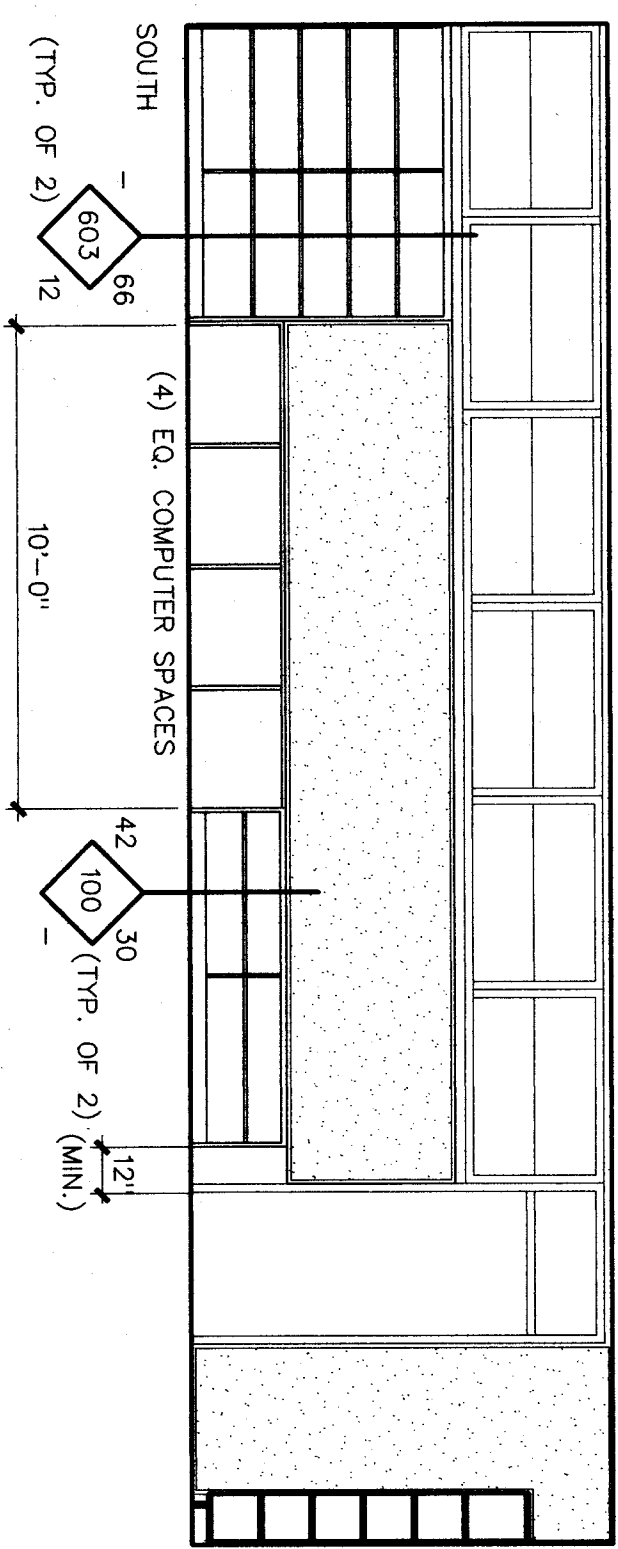
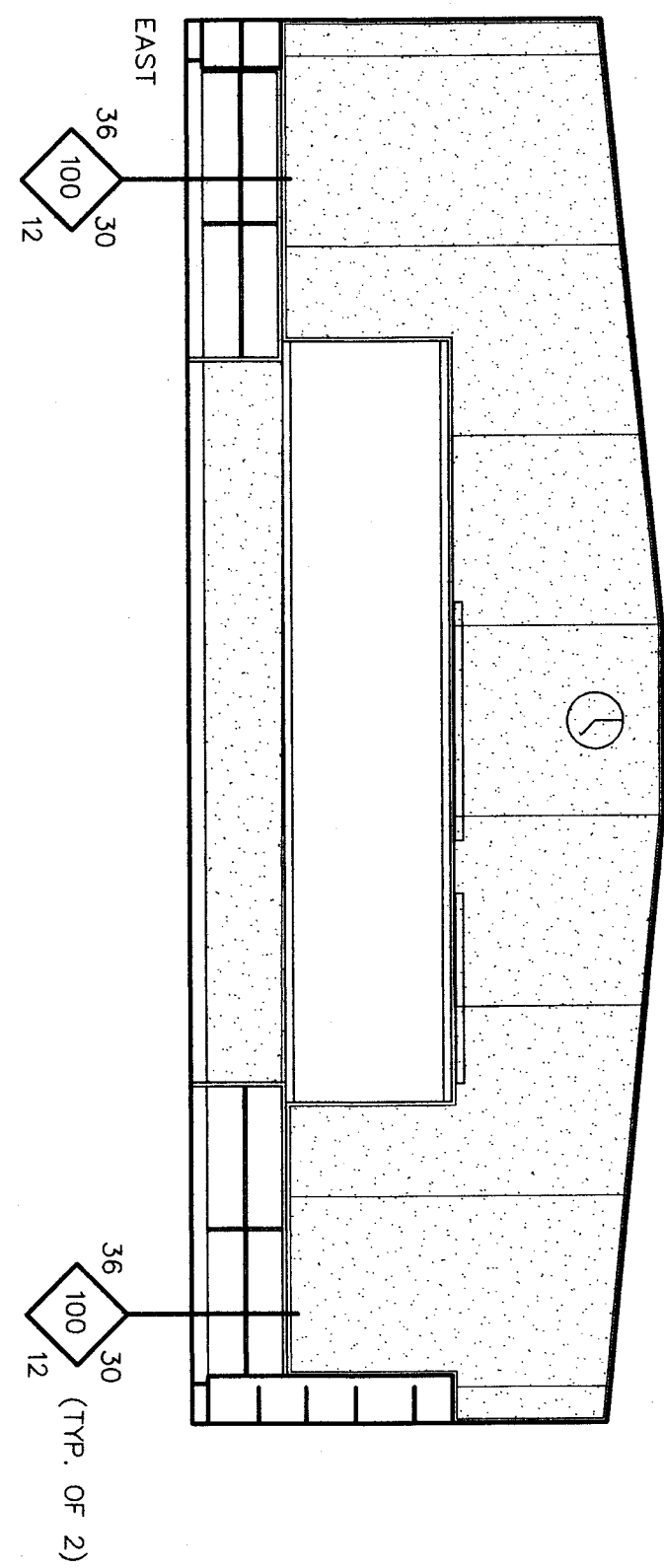
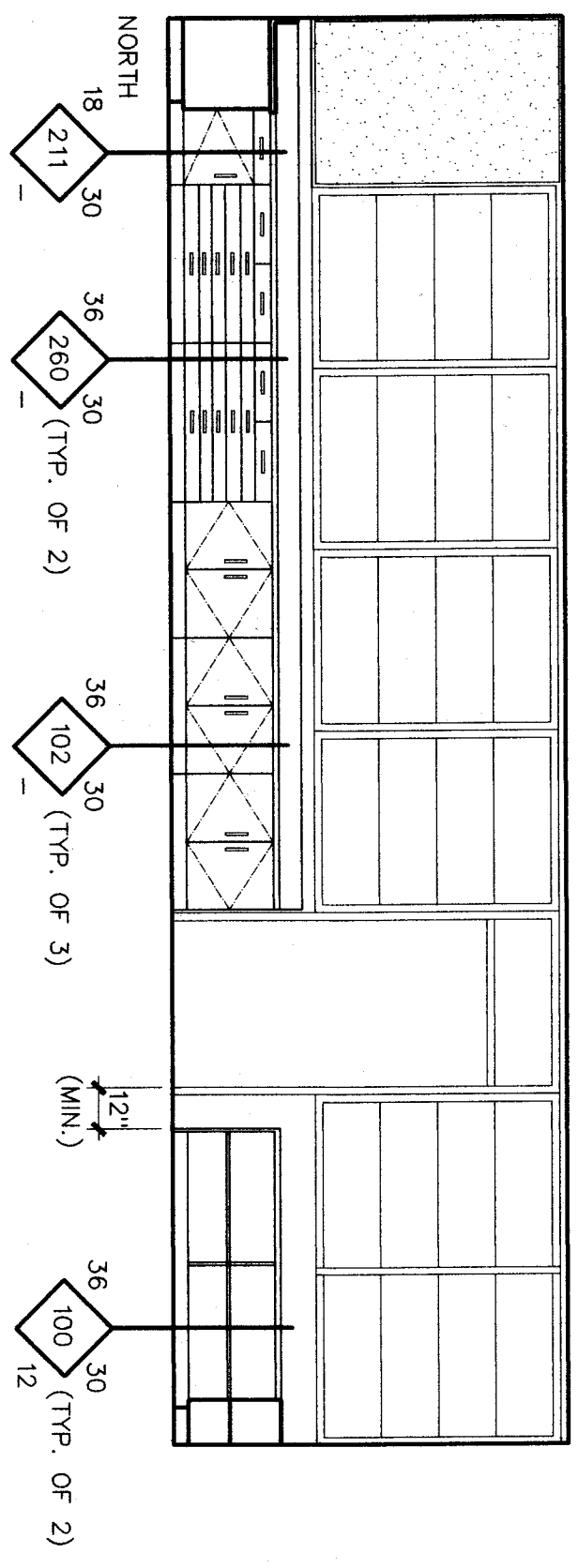


ENLARGED FLOOR PLAN



REFLECTED CEILING PLAN



bfgc architects planners inc.
Bakersfield
 5500 ming avenue, suite 450 Bakersfield, ca. 93309-4831
 805 836-4300 fax 805 836-4831

SAJ Luis Obispo
 2211 broad street suite 103
 san jose, ca 95128
 408 946 5925

SAJ Jose
 180 west santa clara at suite 225
 san jose, california 95113
 408 924-0811

principal architects
 david a. carroll, aia, C-65164
 frank a. gonzalez, aia, C-81232
 robert a. hughes, aia, C-10182
 william r. knudsen, aia, C-87102
 robert l. mack, aia, C-18078

design & interior, aia, C-81860
 donna a. hughes, aia, C-10182
 robert a. hughes, aia, C-10182
 robert l. mack, aia, C-18078

REGISTRATION STAMP
 DIV. OF THE STATE ARCHITECT
 OFFICE OF REGULATION SERVICES
 APPL 101118
 AC 2/26/98 RS 11/13/98
 DATE 08/17/98

**HORT SCHOOL
 MODERNIZATION
 BAKERSFIELD CITY
 SCHOOL DISTRICT**

2301 PARK DRIVE
 BAKERSFIELD, CA. 93306

**ENLARGED FLOOR PLAN
 & INTERIOR ELEVATIONS
 BUILDING D**

TYP. CLASSROOM

1/8" = 1'-0"

job no.	97-276
date	JULY 8, 98
drawn by	ALG
chk'd by	RGB T.
copyright	1998

3.02

PL01 DATE: 08-16-98
 PLOTNAME: USLAKMWD01-276DWG175P02.dwg

CLASSROOM INTERIOR ELEVATIONS

REFER TO DETAILS 2, 3, & 4/ A10.01 FOR CABINET ANCHORAGE.

SCALE: 1/4" = 1'-0"