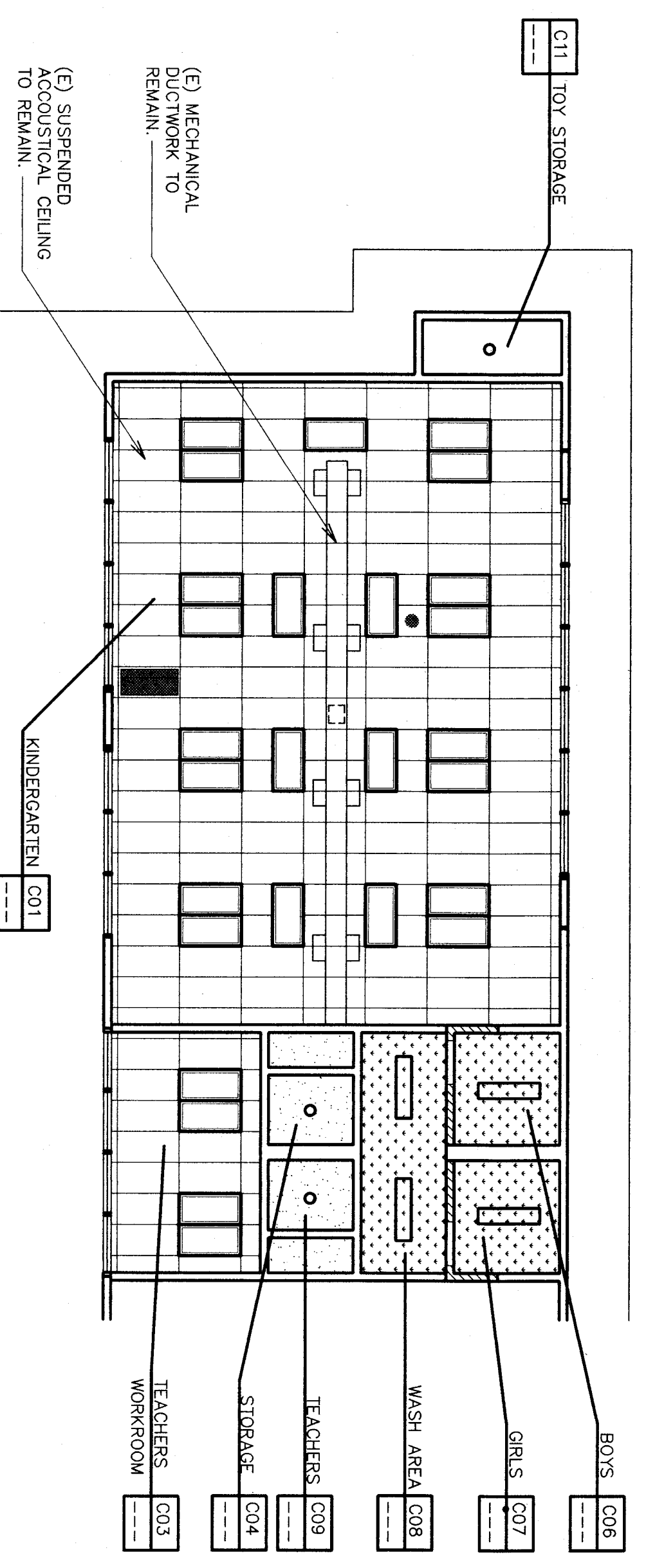
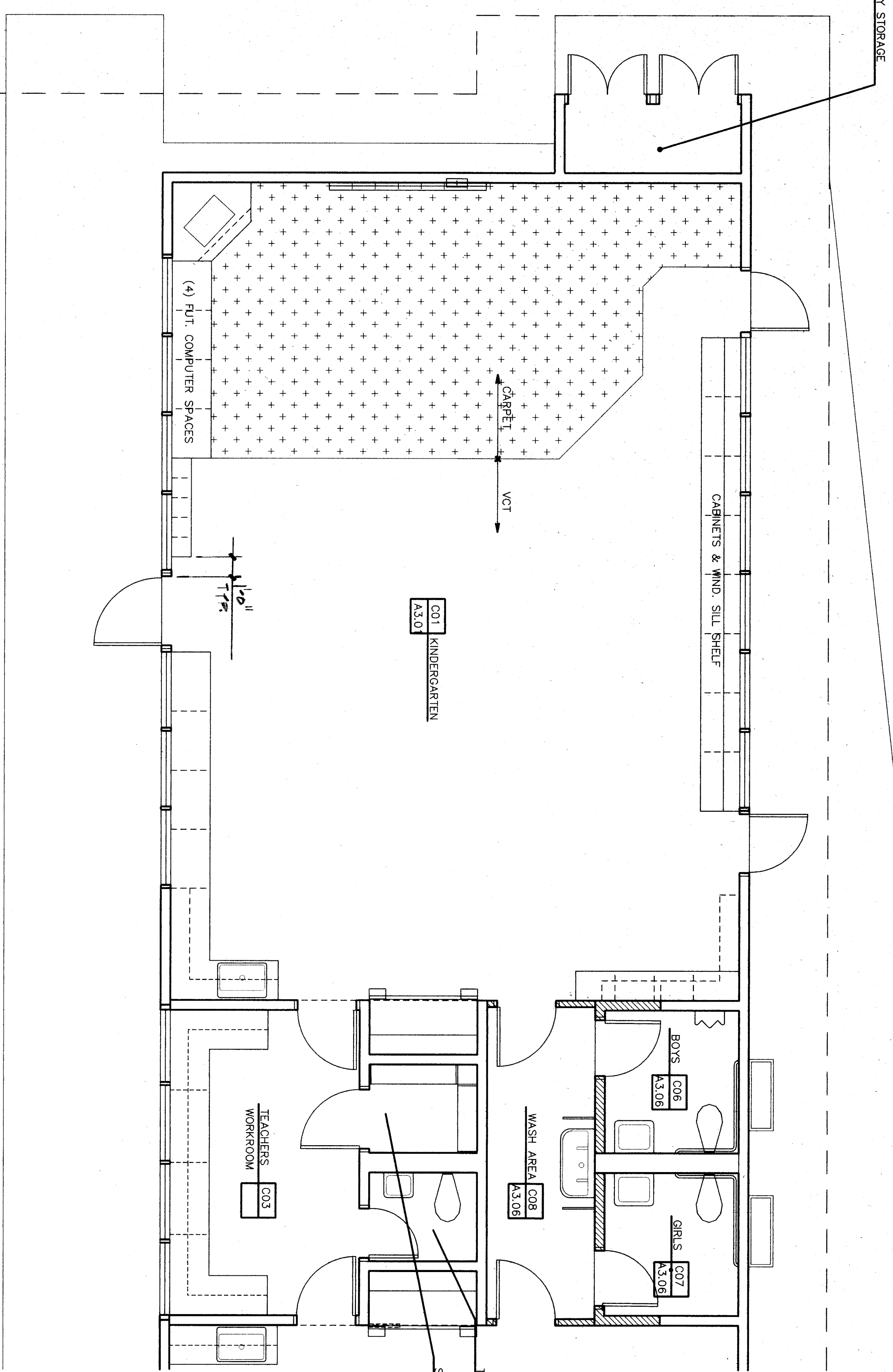
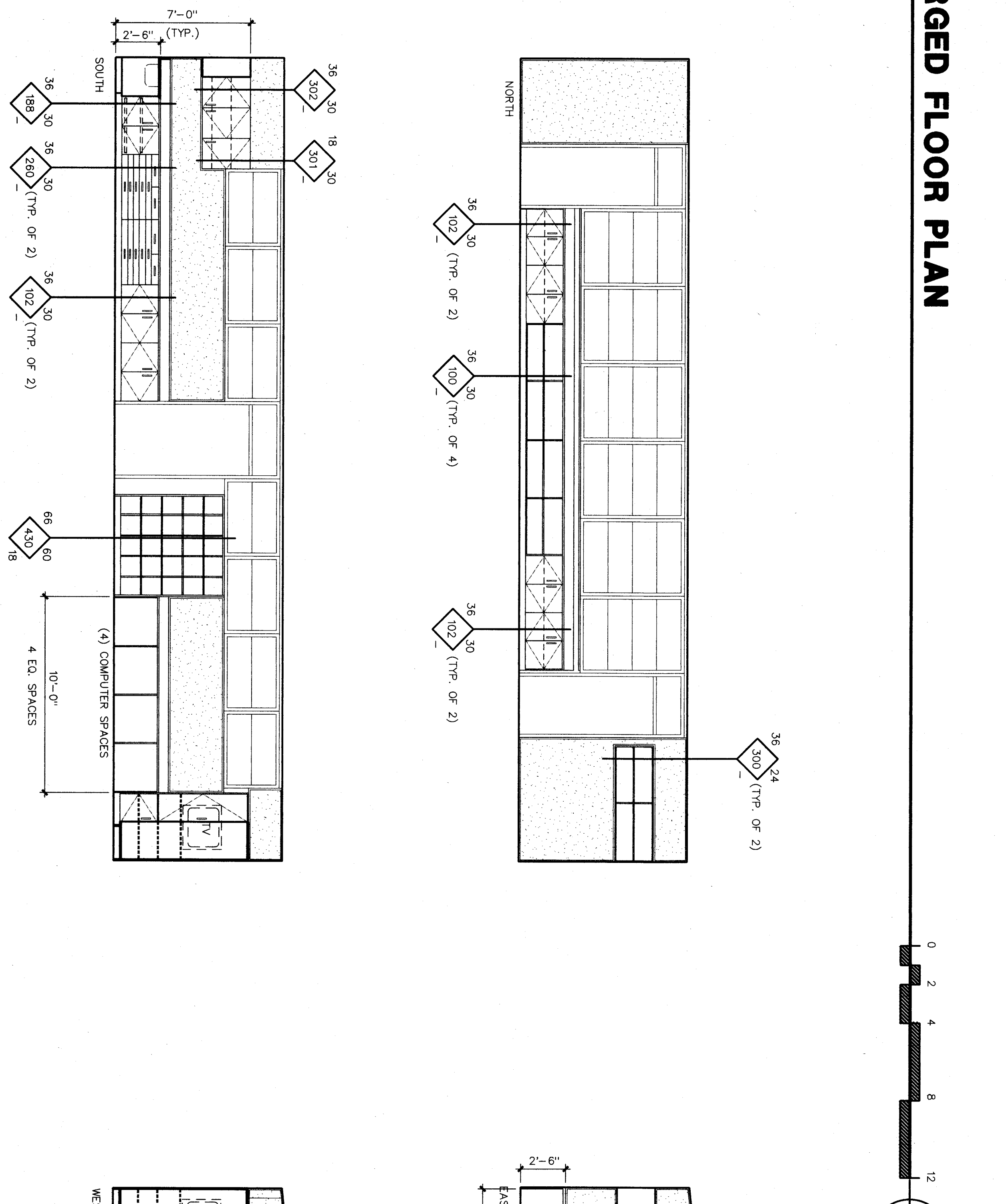


C11 TOY STORAGE

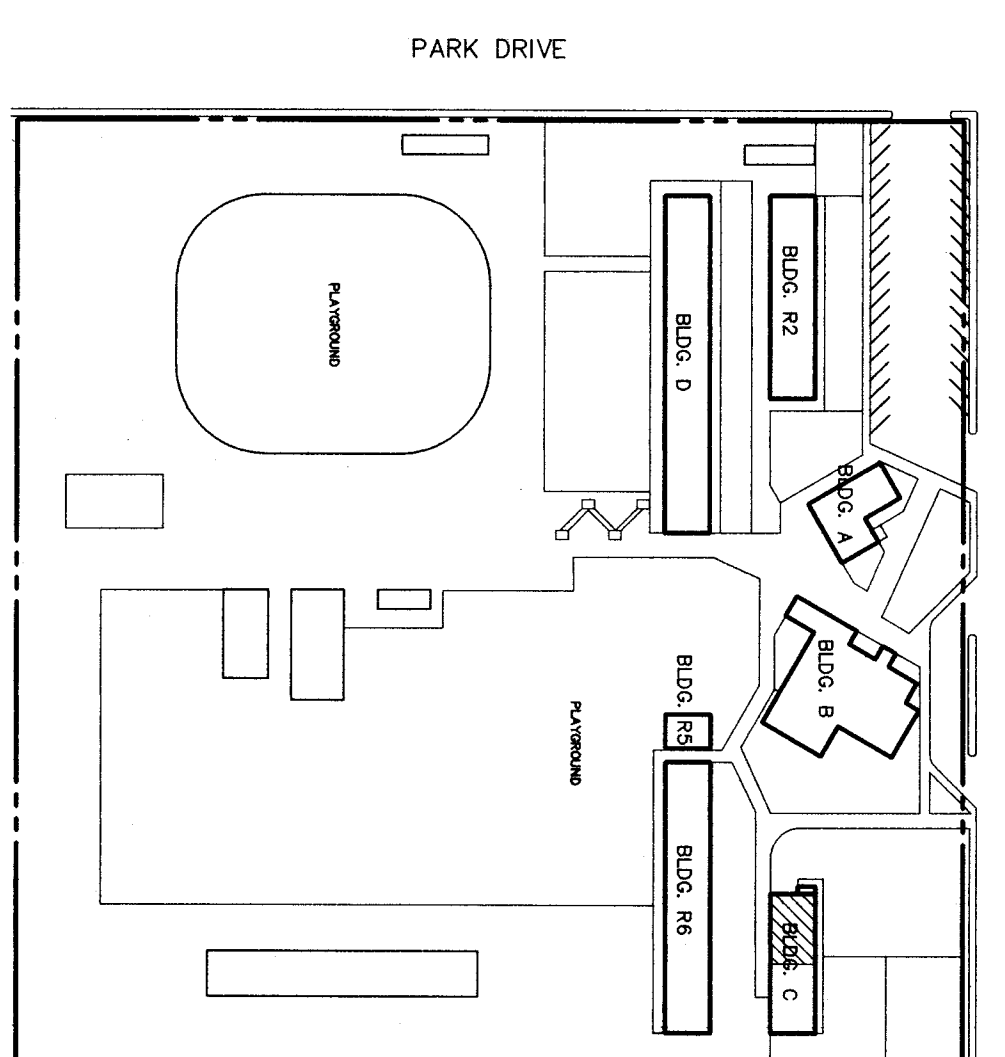
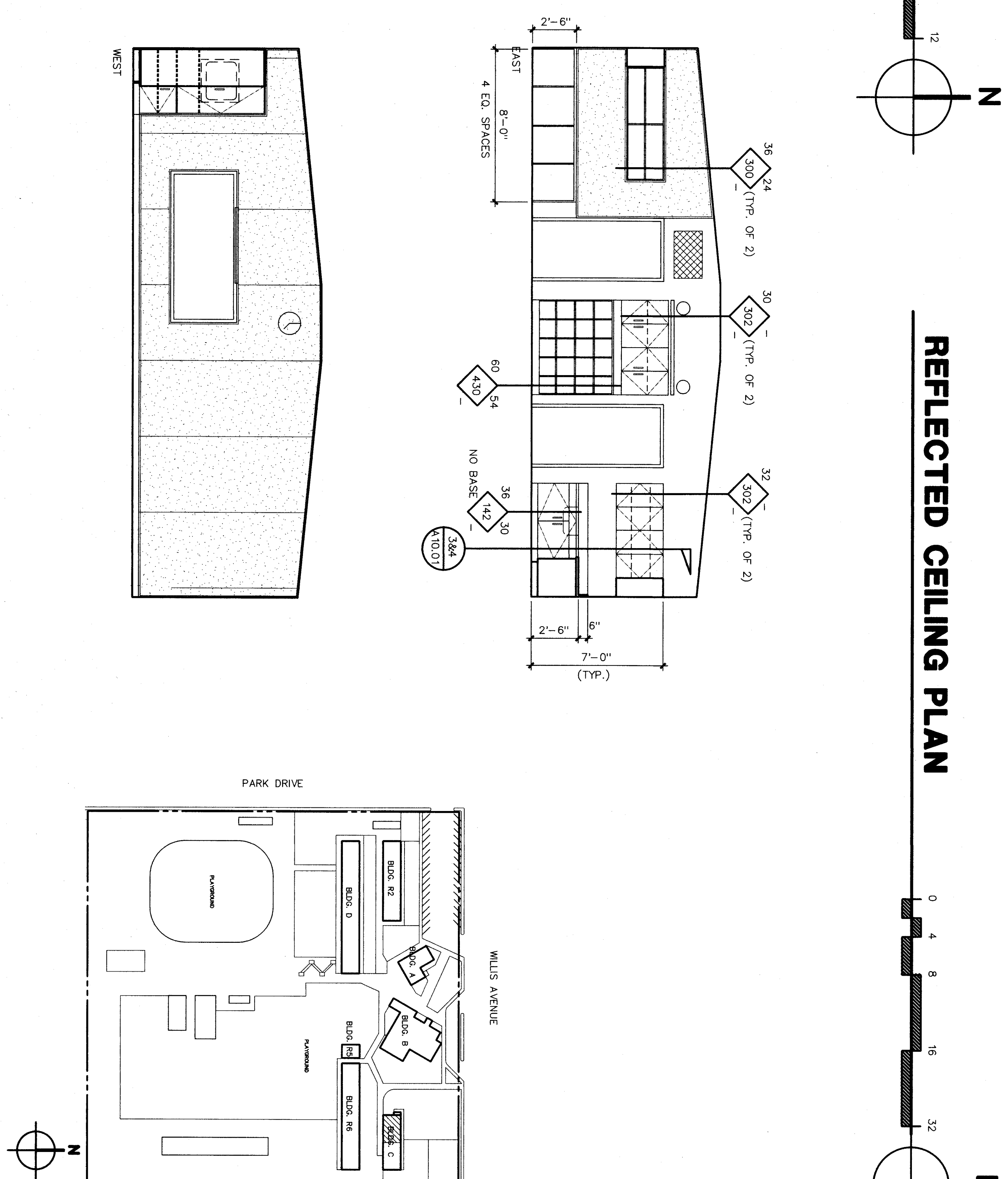


- Item (7) Refer to Architectural Drawings, Sheets A3.01 through A3.05.
- PROVIDE one (1) 4'x8' markerboard in each Kindergarten room (CO1 and CO2).
  - PROVIDE one (1) 4'x16' markerboard in each Classroom (CO1 through CO6).
  - PROVIDE one (1) 4'x12' markerboard in each Classroom (R201 through R209 and R301 through R309).

### ENLARGED FLOOR PLAN

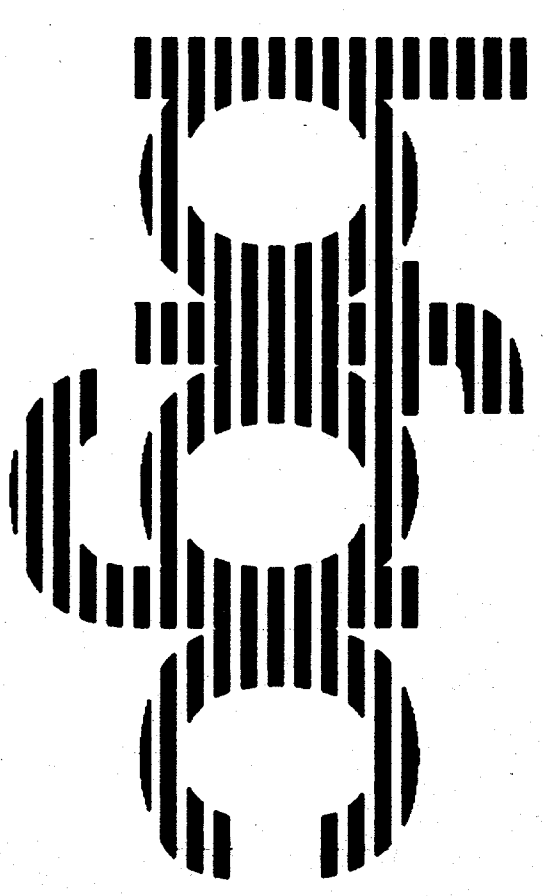


### REFLECTED CEILING PLAN



### KINDERGARTEN INTERIOR ELEVATIONS

REFER TO DETAILS 2, 3, & 4 / A1001 FOR CABINET ANCHORAGE.



**bigc architects planners inc.**  
 bakerfield  
 5500 PARK AVENUE, SUITE 450, BAKERFIELD, CA 93309-4501  
 805 538-7800 FAX 805 538-4811

3an luis obispo  
 3211 broad street, suite 100  
 401 hollywood, suite 100  
 805 546-0433

sah jose  
 160 west santa ana st, suite 525  
 408 526-5500

principal architects  
 david r. carroll, aia, c-81844  
 mark h. anderson, aia, c-10491  
 robert l. fischer, aia, c-8172

shawn a. lynch, aia, c-81180  
 david r. anderson, aia, c-10491  
 robert l. fischer, aia, c-18078

REGISTRATION STATE  
 OFFICE OF THE STATE ARCHITECTS  
 OFFICE OF RESOLUTION SERVICES  
 APRIL 10/11/18  
 No. 2017-0077  
 DATE 06/07/18

**HORT SCHOOL MODERNIZATION**  
**BAKERSFIELD CITY SCHOOL DISTRICT**

2301 PARK DRIVE  
 BAKERSFIELD, CA. 93306

**ENLARGED FLOOR PLAN**  
**TYP. KINDERGARTEN CLASSROOM**

job no. 97-276  
 date JULY 5, 98  
 drawn by J.L.G.  
 checked by RSG T.  
 copyright 1998

30T