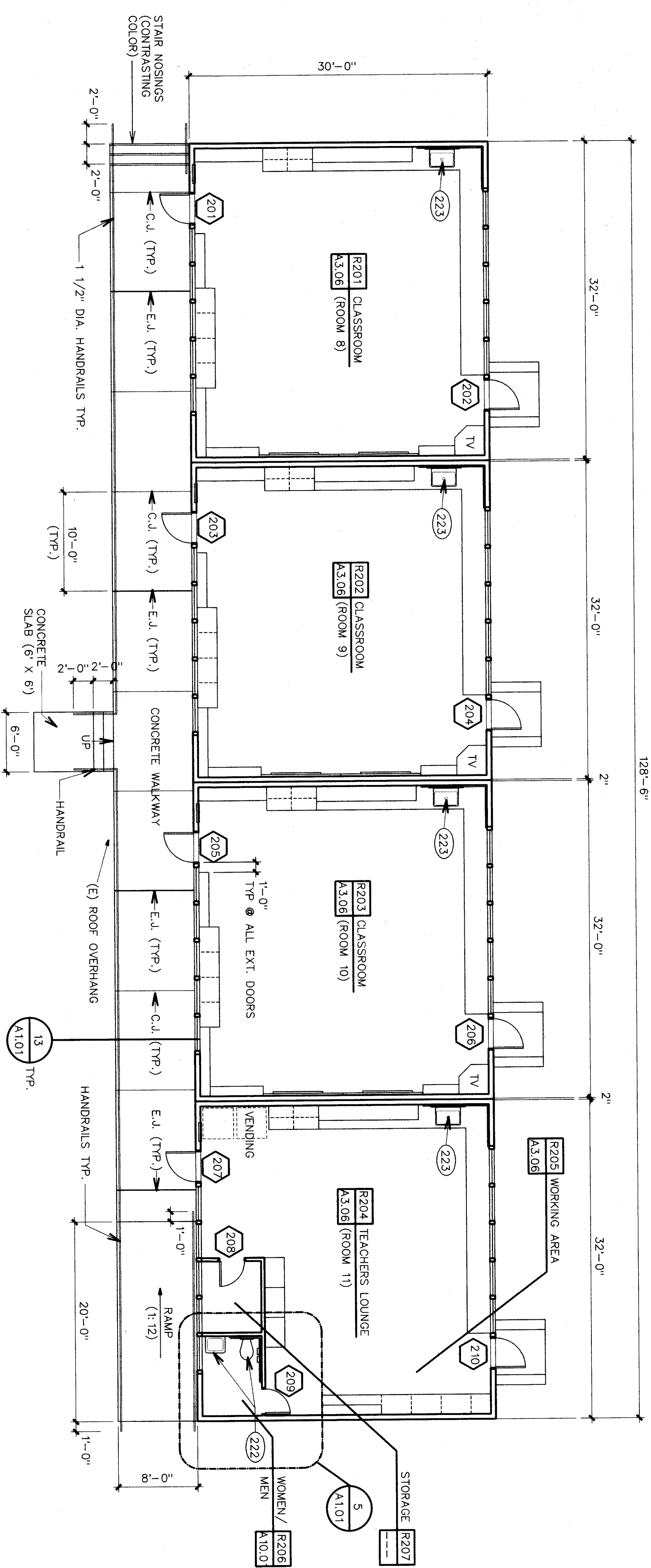
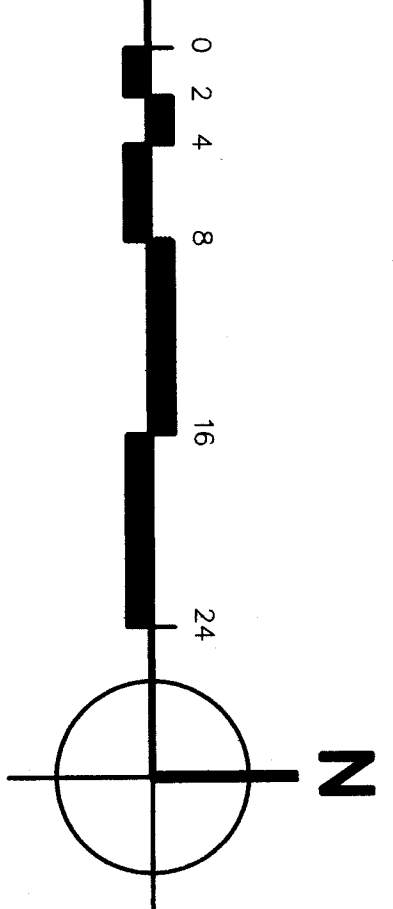
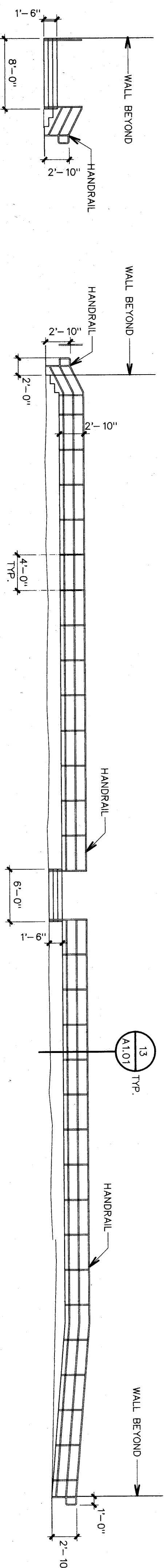
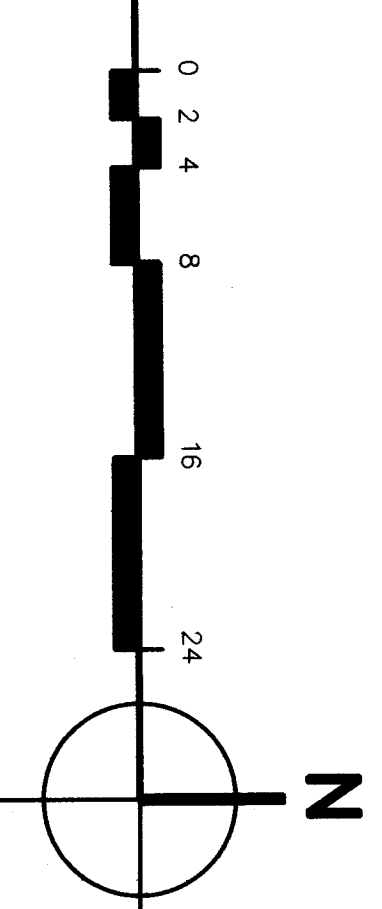


**DEMOLITION FLOOR PLAN - BUILDING R2**



**FLOOR PLAN - BUILDING R2**



**WALKWAY & RAMP HANDRAIL ELEVATIONS**

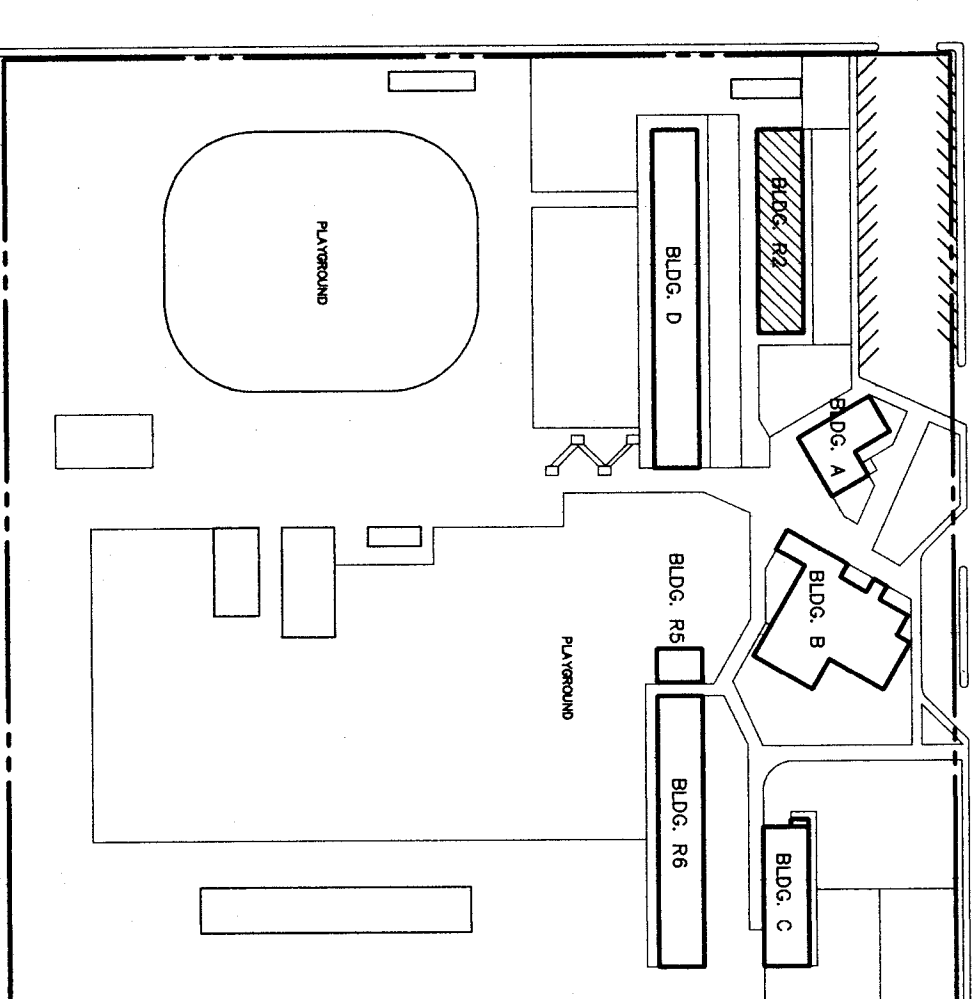
**KEYNOTES**

- 201 REMOVE (E) CABINETS
- 202 REMOVE (E) WALL
- 203 REMOVE (E) PLUMBING FIXTURE
- 204 REMOVE (E) CHALKBOARD
- 205 REMOVE (E) TACKBOARD
- 206 REMOVE (E) DOOR & FRAME
- 207 REMOVE (E) CARPET
- 208 REMOVE (E) CERAMIC TILE FLOOR
- 209 REMOVE (E) CERAMIC TILE WAINSCOT
- 210 REMOVE (E) DRINKING FOUNTAIN
- 211 REMOVE (E) BOILER
- 212 REMOVE (E) CONCRETE RAMP & HANDRAILS
- 213 REMOVE (E) COUNTERTOP & BASE CABINET SHELVES, FINISH EXPOSED END OF CABINETS
- 214 REMOVE (E) FIRE HOSE CABINET
- 215 REMOVE (E) FEGBOARD WALL FACE
- 216 REMOVE (E) MAP RACK & SCREEN
- 217 REMOVE (E) ASPHALT PAVEMENT
- 218 CONCRETE RAMP AND WALKWAY
- 219 INFILL AND PATCH (E) DOOR OPENING, MATCHING THE SAME MATERIALS & FINISHES AS EXTERIOR WALLS
- 220 PATCH & FINISH WALL MATCH W/ SAME MATERIALS AND FINISHES AS EXISTING
- 221 PLATFORM LIFT
- 222 PLUMBING FIXTURE
- 223 CABINET SINK
- 224 3'-0" WOOD GATE W/ LATON
- 225 -MATCH (E) OFFICE FRONT DESK MATERIAL WALL

**LEGEND**

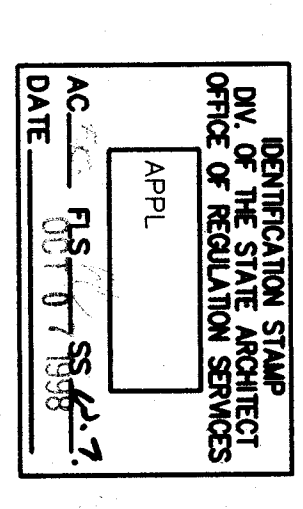
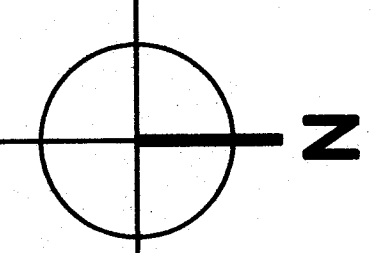
- EXISTING WALL TO REMAIN
- TYP. WALL @ BLDG. A
- 2 X 6 WOOD STUDS @ 16" O.C.
- W/ 5/8" GYP. BOARD ONE SIDE & 1" EXTERIOR PLASTER
- OTHER SIDE W/ 5 1/2" BATT INSULATION,
- ALSO W/ 6" HIGH CONC. CURB.
- TYP. WALL @ BLDG. B
- 2 X 4 WOOD STUDS @ 16" O.C. W/ 5/8" GYP. BR.
- EACH SIDE
- TYP. WALL @ BLDG. C
- 2 X 4 WOOD STUDS @ 16" O.C.
- CHANGES AND WITH 5/8" GYP. BOARD, TILE WAINSCOT IN ONE SIDE,
- ALSO W/ 6" HIGH CONC. CURB.
- (E) WALL TO BE REMOVED
- (E) DOOR/FRAME TO BE REMOVED
- (E) DOOR/FRAME TO REMAIN

PARK DRIVE



WALLIS AVENUE

**KEY PLAN**



**bfgc architects planners inc.**

5500 ming avenue, suite 450 bakersfield ca 93309-4631  
 805 836-4300  
 san luis obispo  
 3211 broad street suite 103  
 san luis obispo, california 95401  
 805 590-0433  
 san luis obispo  
 800 west santa ana st. suite 525  
 san luis obispo, california 95303  
 408 824-0841  
 principal architects  
 david r. gonzalez, s.a. C-6164  
 brian h. laguer, a.l.a. C-23137  
 mark a. gregg, s.a. C-8132  
 robert l. mabe, s.a. C-18079  
 walter r. hudson, s.a. C-8702  
 dean a. hanson, s.a. C-8190  
 david r. gonzalez, s.a. C-6164  
 brian h. laguer, a.l.a. C-23137  
 mark a. gregg, s.a. C-8132  
 robert l. mabe, s.a. C-18079  
 walter r. hudson, s.a. C-8702

**HORT SCHOOL  
 MODERNIZATION  
 BAKERSFIELD CITY  
 SCHOOL DISTRICT**

2301 PARK DRIVE  
 BAKERSFIELD, CA. 93306

**FLOOR PLAN**

**BUILDING R2**

job no.	97-276
date	JULY 8, 98
drawn by	ALLC
chk'd by	ROB T.
copy/ght	1998

