

**2301 PARK DRIVE  
BAKERSFIELD, CA. 93306**

**FLOOR PLAN**

**BUILDING D**

1/8" = 1'-0"

job no. 97-278  
date JULY 8, 98  
drawn by A.L.G.  
chk'd by ROB T.  
copy/right 1998

**2.05**

**REGISTRATION STAMP**  
STATE ARCHITECTS  
APPL. 101118  
DATE 07-11-98

**bjgc architects planners inc.**  
bakersfield  
5500 ming avenue, suite 450, bakersfield ca 93309-4831  
805 836-4300 fax 805 836-4311

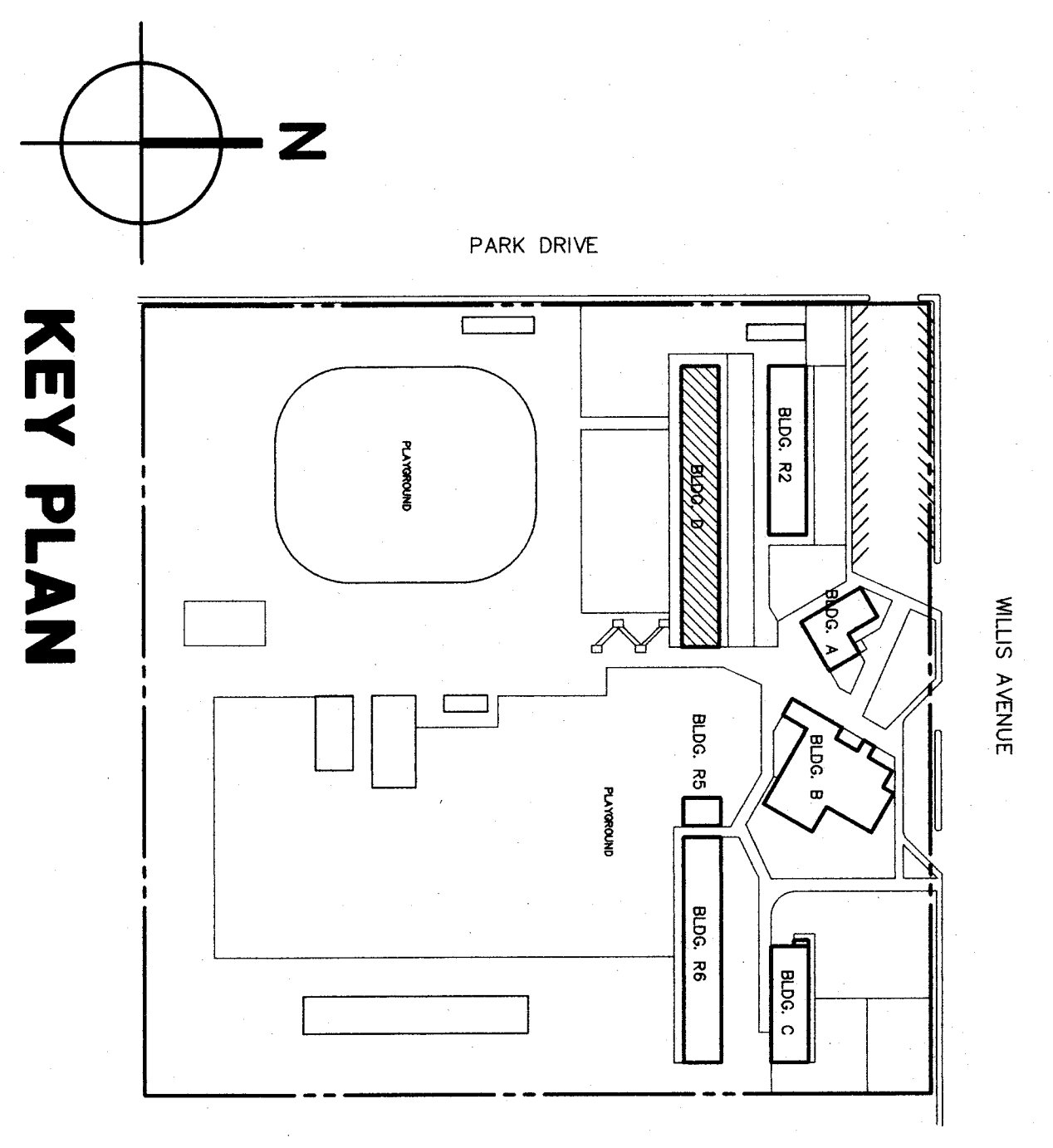
san luis obispo  
2211 wood steel suite 18  
san luis obispo, california 93401  
805 390-0483  
san jose  
800 west santa clara st. suite 525  
san jose, california 95131  
408 824-0811

principal architect  
diana a. hanson, l.a. C-81564  
diane k. bauer, l.a. C-81322  
david l. mack, l.a. C-23213  
william r. roland, s.a. C-87102

design & hanson, l.a. C-81890  
hanson & bauer, l.a. C-23213  
hanson & roland, s.a. C-180719

**LEGEND**

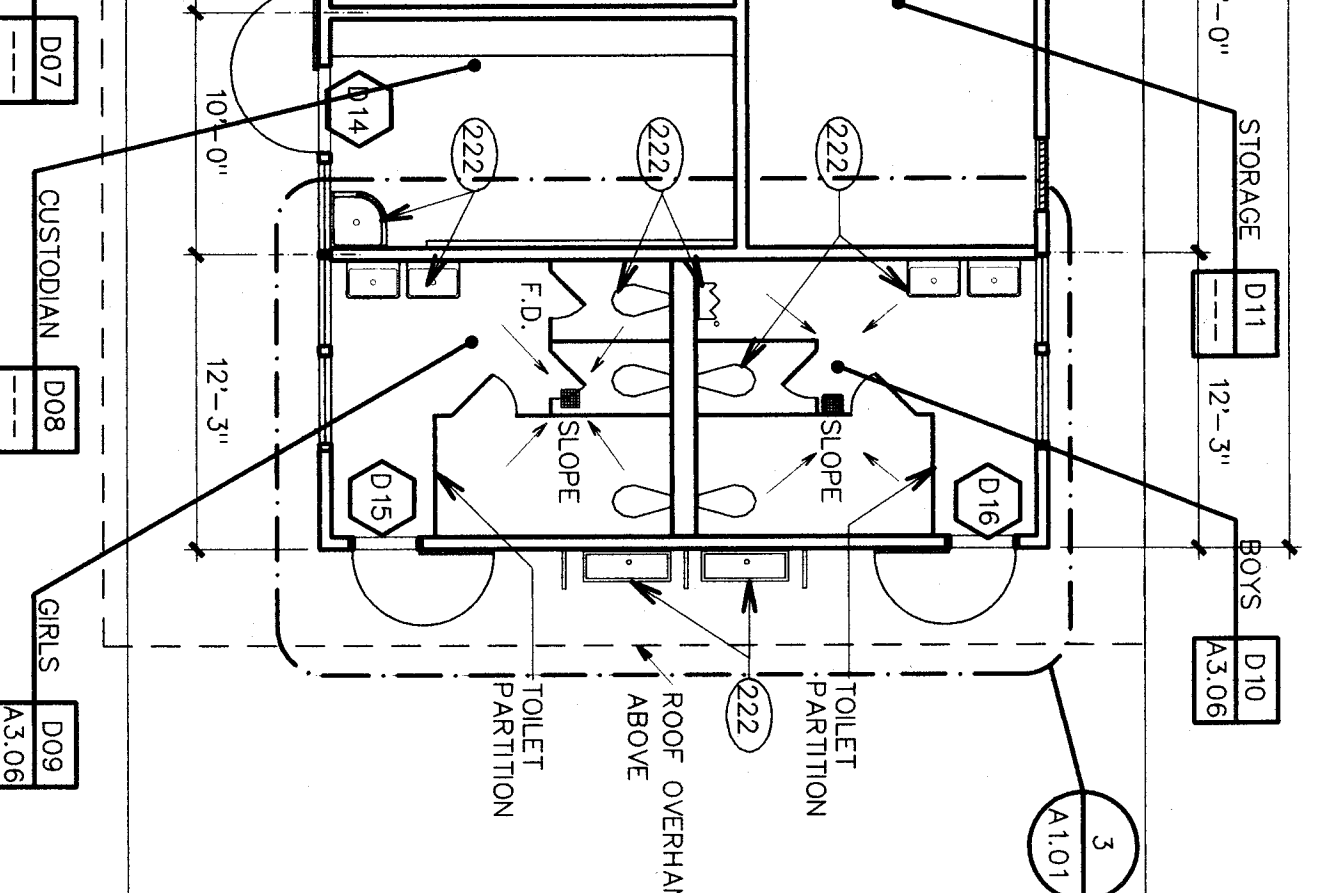
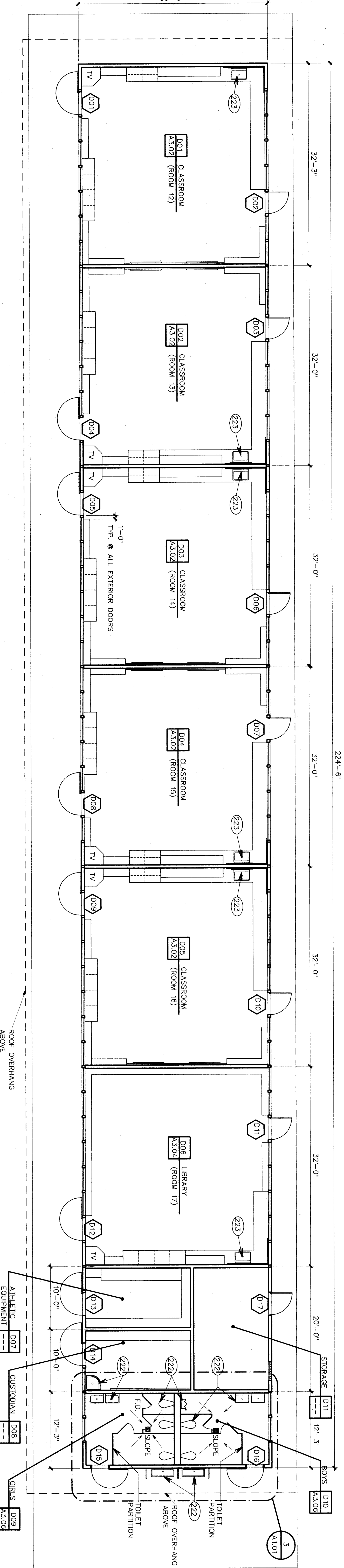
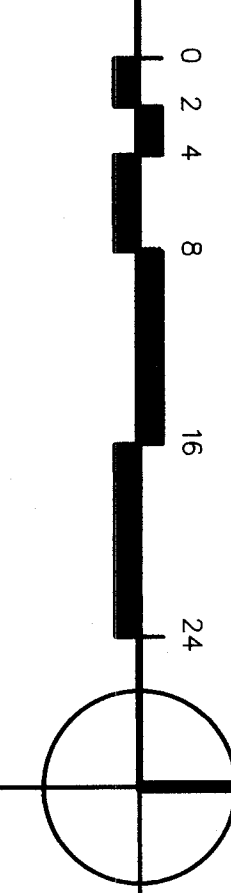
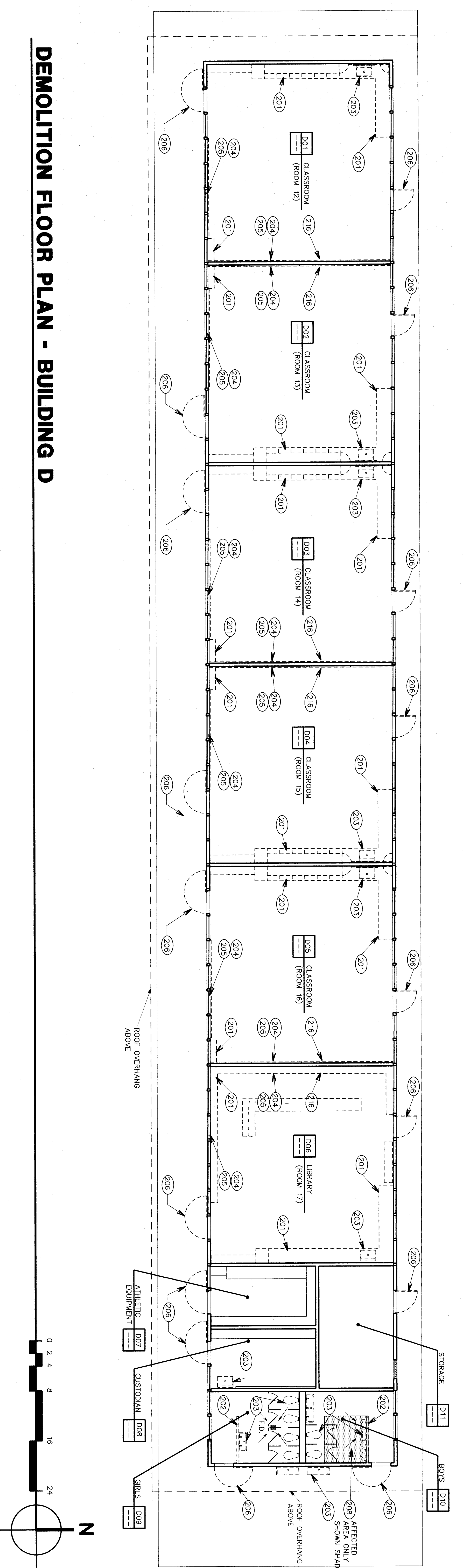
- EXISTING WALL TO REMAIN
- TYP. WALL @ BLDG. A
- 2 X 6 WOOD STUDS @ 16" O.C.
- W/ 5/8" GYP. BOARD ONE SIDE & 1" EXTERIOR PLASTER
- OTHER SIDE W/ 5 1/2" BATT. INSULATION.
- TYP. WALL @ BLDG. B
- 2 X 4 WOOD STUDS @ 16" O.C. W/ 5/8" GYP. BD. @ EACH SIDE
- TYP. WALL @ BLDG. C
- 2 X 4 WOOD STUDS @ 16" O.C. WITH 5/8" GYP. BD. ON BOTH SIDES AND WITH 4-8" CERAMIC TILE MANSOON IN ONE SIDE
- (E) WALL TO BE REMOVED
- (E) DOOR/FRAME TO BE REMOVED
- (E) DOOR/FRAME TO REMAIN



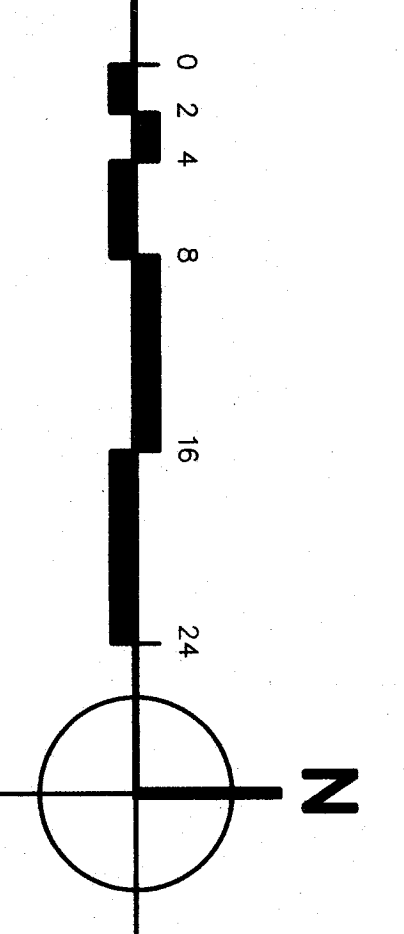
**KEYNOTES**

- 201 REMOVE (E) CABINETS
- 202 REMOVE (E) WALL
- 203 REMOVE (E) PLUMBING FIXTURE
- 204 REMOVE (E) CHALKBOARD
- 205 REMOVE (E) TACKBOARD
- 206 REMOVE (E) DOOR & FRAME
- 207 REMOVE (E) CARPET
- 208 REMOVE (E) CERAMIC TILE FLOOR
- 209 REMOVE (E) CERAMIC TILE MANSOON
- 210 REMOVE (E) DRINKING FOUNTAIN
- 211 REMOVE (E) BOILER
- 212 REMOVE (E) CONCRETE RAUP & HANDRAILS
- 213 REMOVE (E) COUNTERTOP & BASE CABINET SHELVES, REFINISH EXPOSED END OF CABINETS
- 214 REMOVE (E) FIRE HOSE CABINET
- 215 REMOVE (E) PEGBOARD WALL FACE
- 216 REMOVE (E) MAP RACK & SCREEN
- 217 REMOVE (E) ASPHALT PAVEMENT
- 218 CONCRETE RAUP AND WALKWAY
- 219 INSET AND PATCH (E) DOOR OPENING, MATCHING THE SAME MATERIALS & FINISHES AS EXISTING WALLS
- 220 PATCH & FINISH WALL MATCH W/ SAME MATERIALS AND FINISHES AS EXISTING
- 221 PLATFORM LIFT
- 222 PLUMBING FIXTURE
- 223 CABINET SINK
- 224 3'-0" WOOD GATE W/ LATCH -MATCH (E) OFFICE FRONT DESK MATERIAL
- 225 WALL

**DEMOLITION FLOOR PLAN - BUILDING D**



**FLOOR PLAN - BUILDING D**



**HORT SCHOOL  
MODERNIZATION**

**BAKERSFIELD CITY  
SCHOOL DISTRICT**

2301 PARK DRIVE  
BAKERSFIELD, CA. 93306

**FLOOR PLAN**

**BUILDING D**

1/8" = 1'-0"

job no. 97-278  
date JULY 8, 98  
drawn by A.L.G.  
chk'd by ROB T.  
copy/right 1998

**2.05**

**REGISTRATION STAMP**  
STATE ARCHITECTS  
APPL. 101118  
DATE 07-11-98

**bjgc architects planners inc.**  
bakersfield  
5500 ming avenue, suite 450, bakersfield ca 93309-4831  
805 836-4300 fax 805 836-4311

san luis obispo  
2211 wood steel suite 18  
san luis obispo, california 93401  
805 390-0483  
san jose  
800 west santa clara st. suite 525  
san jose, california 95131  
408 824-0811

principal architect  
diana a. hanson, l.a. C-81564  
diane k. bauer, l.a. C-81322  
david l. mack, l.a. C-23213  
william r. roland, s.a. C-87102

design & hanson, l.a. C-81890  
hanson & bauer, l.a. C-23213  
hanson & roland, s.a. C-180719