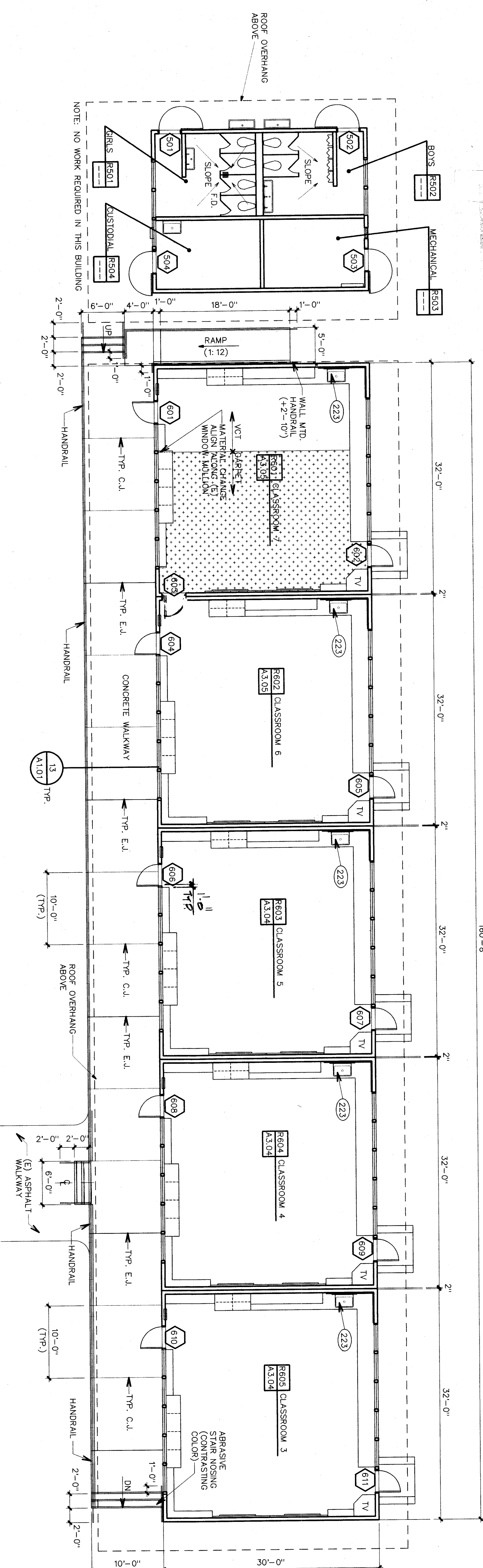


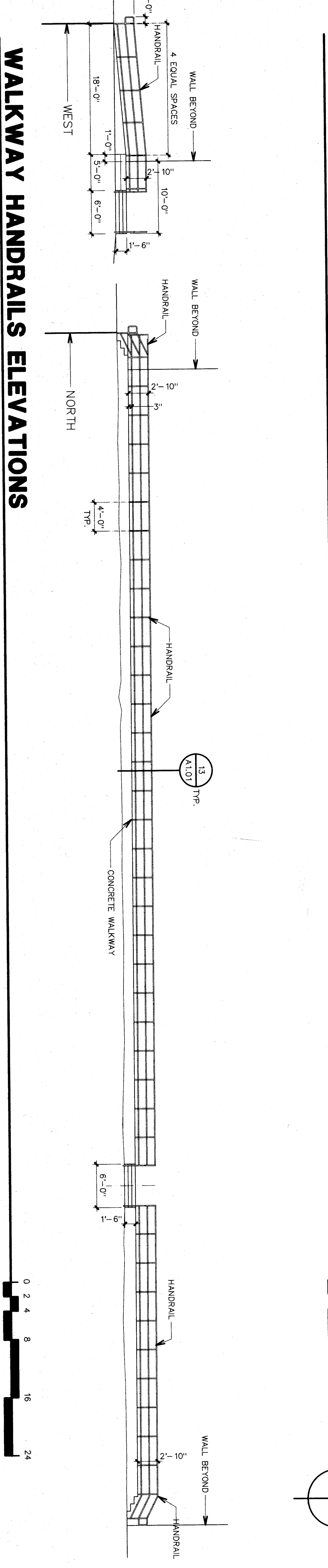
**DEMOLITION FLOOR PLAN - BUILDINGS R5 & R6**

Item 1 (b) Refer to Architectural Drawings, Sheets A2.04 and A2.05  
 R5 and R6  
 a. REMOVE existing wood door sill for exterior doors in Buildings R5 and R6 and  
 REPLACE with threshold specified in Specification Section 08710.  
 b. Contractor shall paint window frames in Buildings R5 and R6.  
 160'-8"

Item 1 (b) Refer to Architectural Drawings, Sheets A2.04 and A2.05  
 R5 and R6  
 a. REMOVE existing wood door sill for exterior doors in Buildings R5 and R6 and  
 REPLACE with threshold specified in Specification Section 08710.  
 b. Contractor shall paint window frames in Buildings R5 and R6.  
 160'-8"



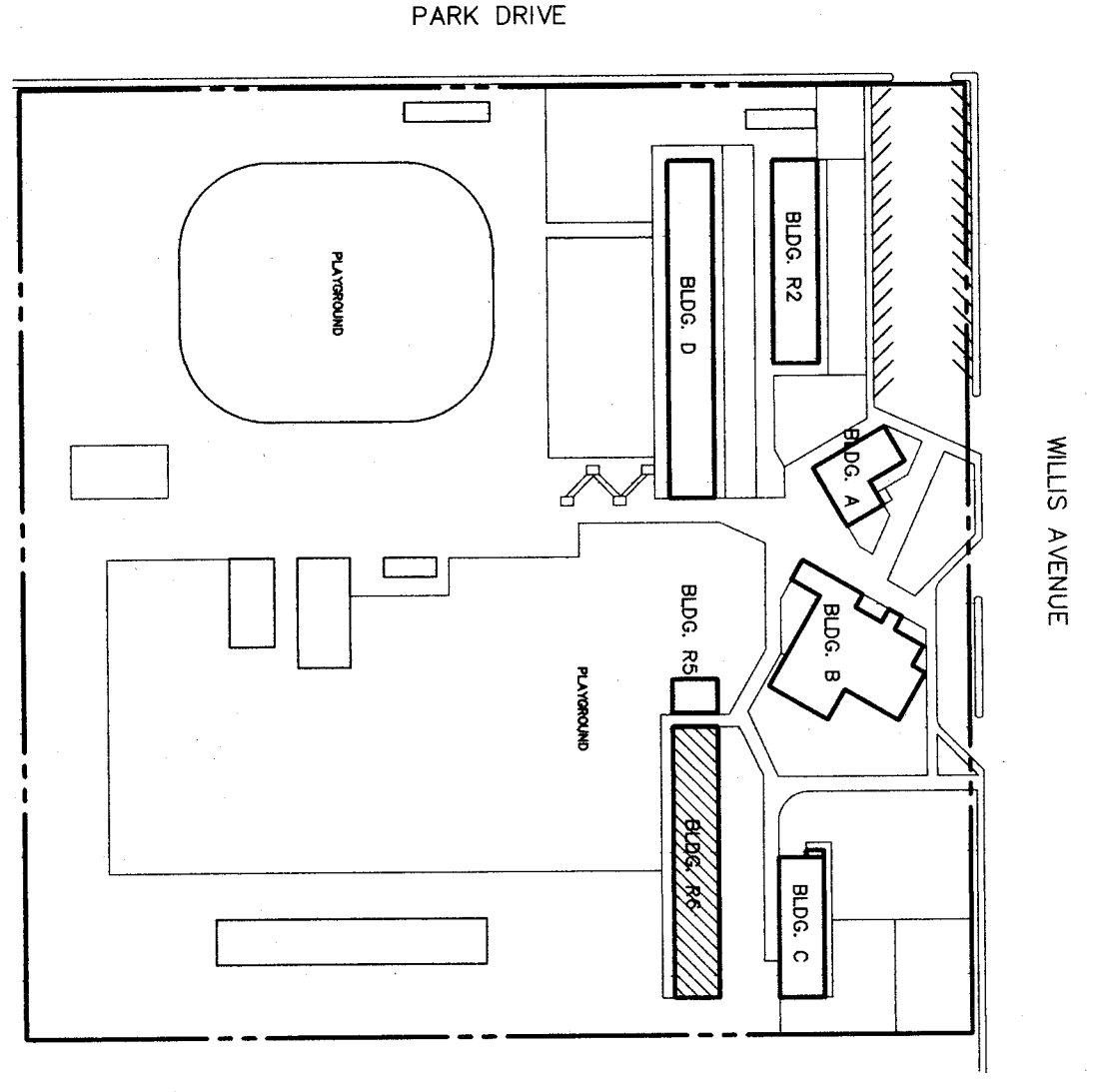
**FLOOR PLAN - BUILDINGS R5 & R6**



**WALKWAY HANDRAILS ELEVATIONS**

KEYNOTES	
201	REMOVE (E) CABINETS
202	REMOVE (E) WALL
203	REMOVE (E) PLUMBING FIXTURE
204	REMOVE (E) CHALKBOARD
205	REMOVE (E) TACKBOARD
206	REMOVE (E) DOOR & FRAME
207	REMOVE (E) CARPET
208	REMOVE (E) CERAMIC TILE FLOOR
209	REMOVE (E) CERAMIC TILE WAINSCOT
210	REMOVE (E) DRINKING FOUNTAIN
211	REMOVE (E) BOILER
212	REMOVE (E) CONCRETE RAMP & HANDRAILS
213	REMOVE (E) COUNTERTOP & BASE CABINET SHELVES, RENISH EXPOSED END OF CABINETS
214	REMOVE (E) FIRE HOSE CABINET
215	REMOVE (E) PEGBOARD WALL FACE
216	REMOVE (E) MAP RACK & SCREEN
217	REMOVE (E) ASPHALT PAVEMENT
218	CONCRETE RAMP AND WALKWAY
219	INFLIT AND PATCH (E) DOOR OPENING, MATCHING THE SAME MATERIALS & FINISHES AS EXTERIOR WALLS
220	PATCH & FINISH WALL MATCH W/ SAME MATERIALS AND FINISHES AS EXISTING
221	PLATFORM LIFT
222	PLUMBING FIXTURE
223	CABINET SINK
224	3'-0" WOOD GATE W/ LATCH
225	-MATCH (E) OFFICE FRONT DESK MATERIAL WALL

LEGEND	
---	EXISTING WALL TO REMAIN
---	TYP. WALL @ BLDG. A
---	2 X 4 WOOD STUDS @ 16" O.C. W/ 5/8" GYP. BOARD ONE SIDE & T' EXTERIOR PLASTER @ OTHER SIDE W/ 5 1/2" BATT. INSULATION. ALSO W/ 6" HIGH CONC. CURB.
---	TYP. WALL @ BLDG. B
---	2 X 4 WOOD STUDS @ 16" O.C. W/ 5/8" GYP. BO. @ EACH SIDE
---	TYP. WALL @ BLDG. C
---	2 X 4 WOOD STUDS @ 16" O.C. W/ 5/8" GYP. BOARD ONE SIDE AND 1/2" BATT. INSULATION. ALSO W/ 6" HIGH CONC. CURB.
---	(E) WALL TO BE REMOVED
---	(E) DOOR/FRAME TO BE REMOVED
---	(E) DOOR/FRAME TO REMAIN



**KEY PLAN**

**HORT SCHOOL MODERNIZATION BAKERSFIELD CITY SCHOOL DISTRICT**

**2301 PARK DRIVE BAKERSFIELD, CA. 93306**

**FLOOR PLAN BUILDINGS R5 & R6**

1/8" = 1'-0"

job no.	97-276
date	JULY 8, 98
drawn by	A.L.C.
checked by	ROB T.
copyright	1997

**204**

**bigc architects planners inc.**

**bakersfield**

5500 ming avenue, suite 450, bakersfield ca 93309-4631  
 805 836-4300 fax 805 836-4311

san luis obispo  
 3201 broad street suite 103  
 san luis obispo, california 93401  
 805 946-0453

san jose  
 800 west meadow drive, suite 525  
 san jose, california 95128  
 408 824-0841

principal architects

donald e. graham, l.a., C-15654  
 david a. becker, l.a., C-15122  
 david l. hickel, l.a., C-18702  
 walter e. becker, s.f., C-87102

donald e. graham, l.a., C-8180  
 david a. becker, l.a., C-23123  
 david l. hickel, l.a., C-18079  
 walter e. becker, s.f., C-87102

**REGISTRATION STAMP**

**DK OF THE STATE ARCHITECTS**

**OFFICE OF THE STATE ARCHITECT**

APPL 101118

DATE: JUL 17 1998