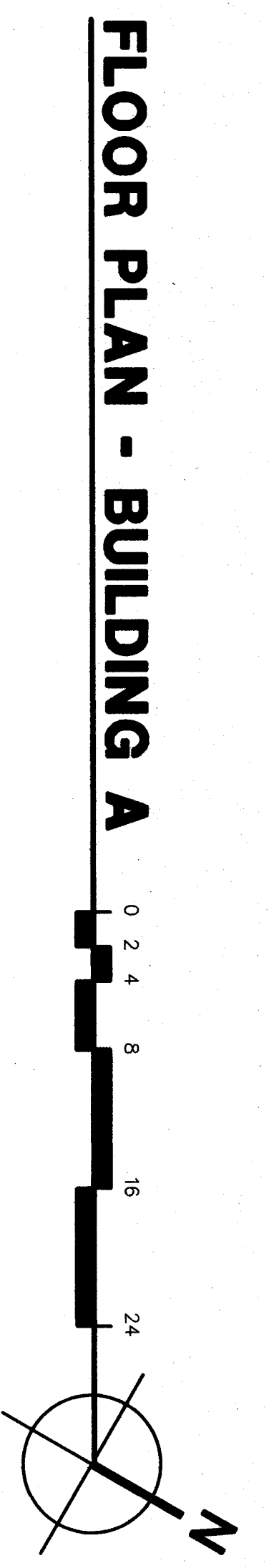
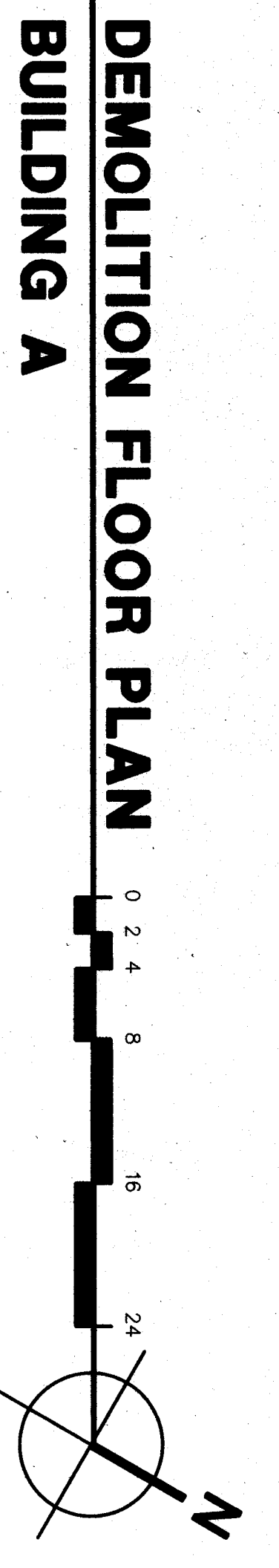
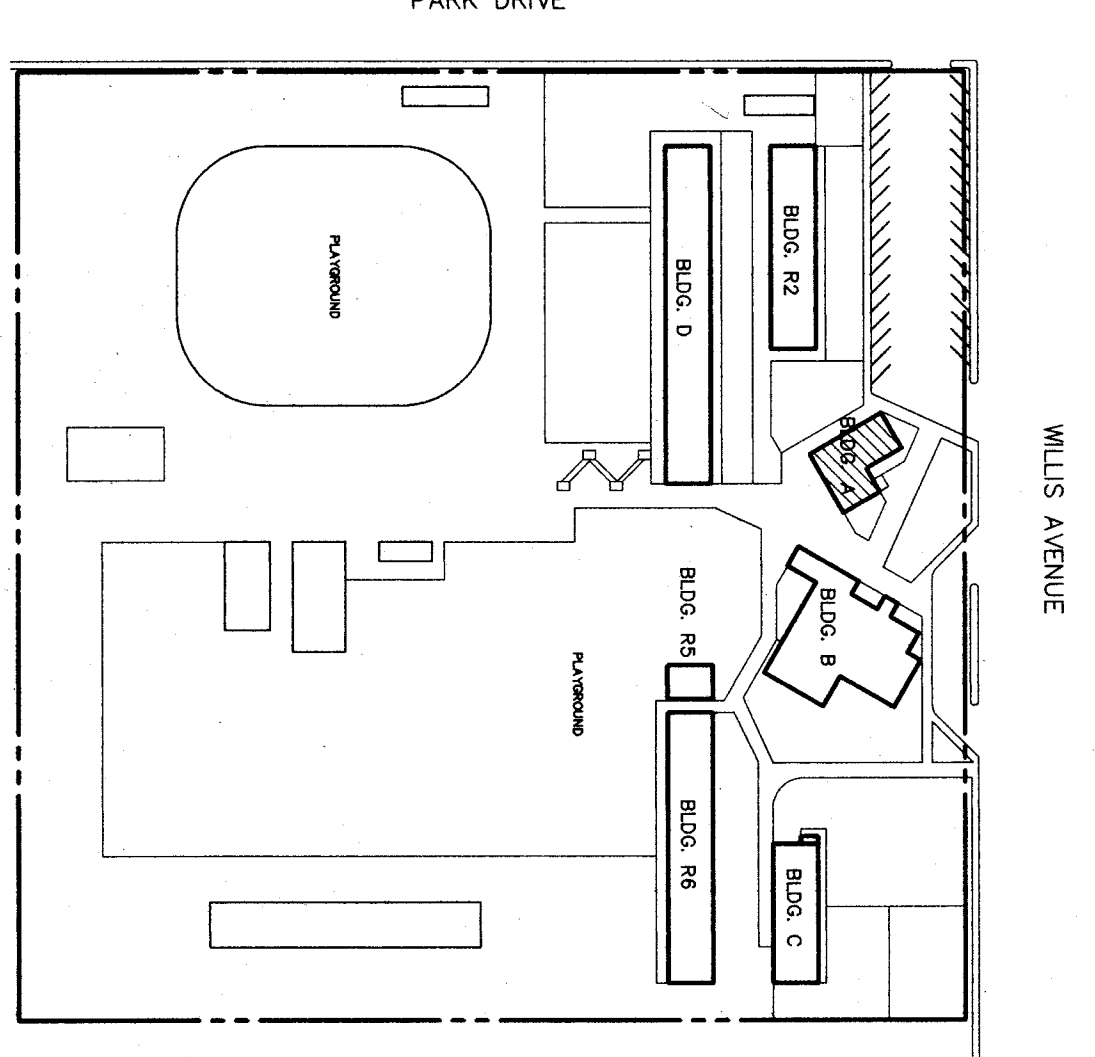
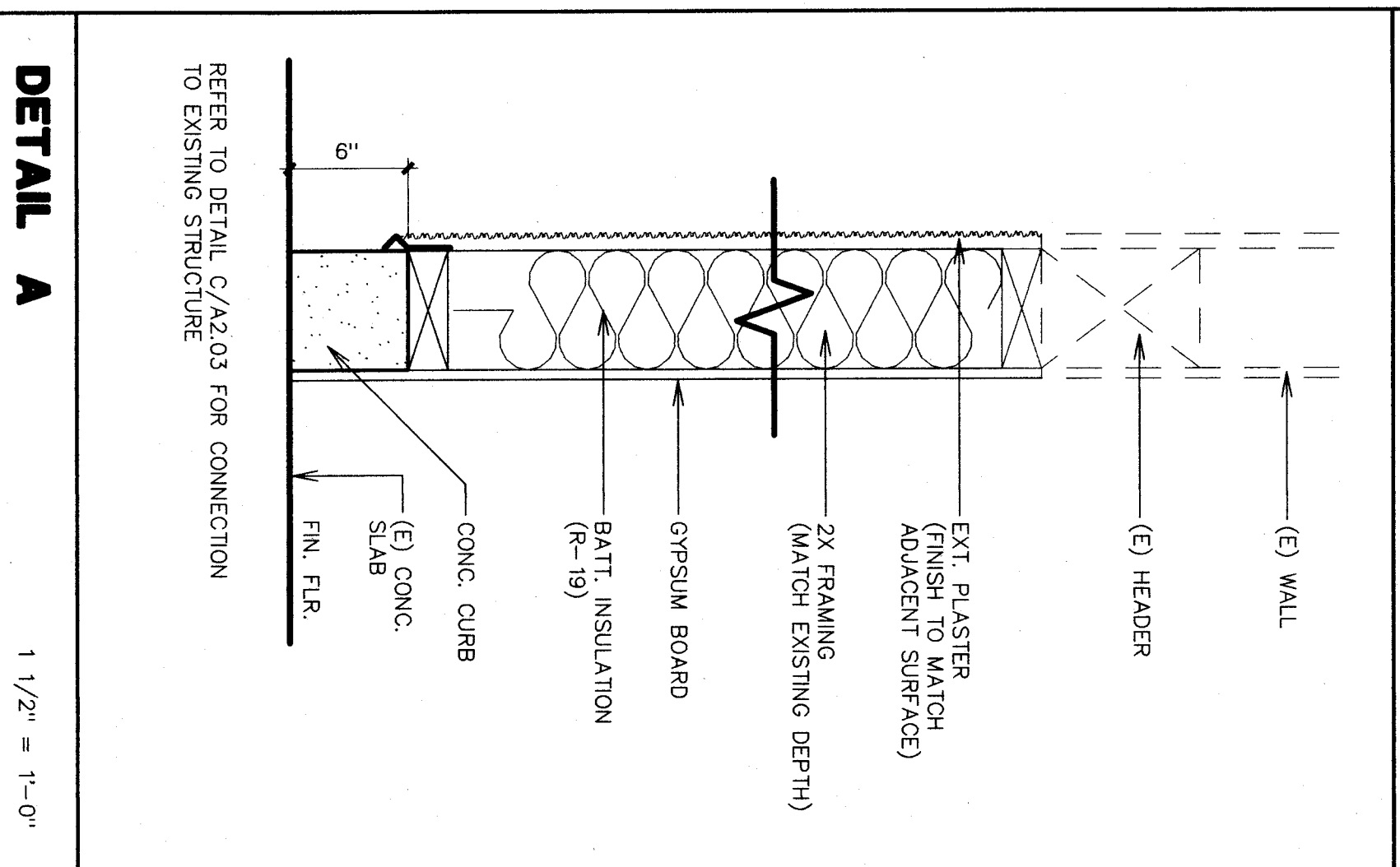
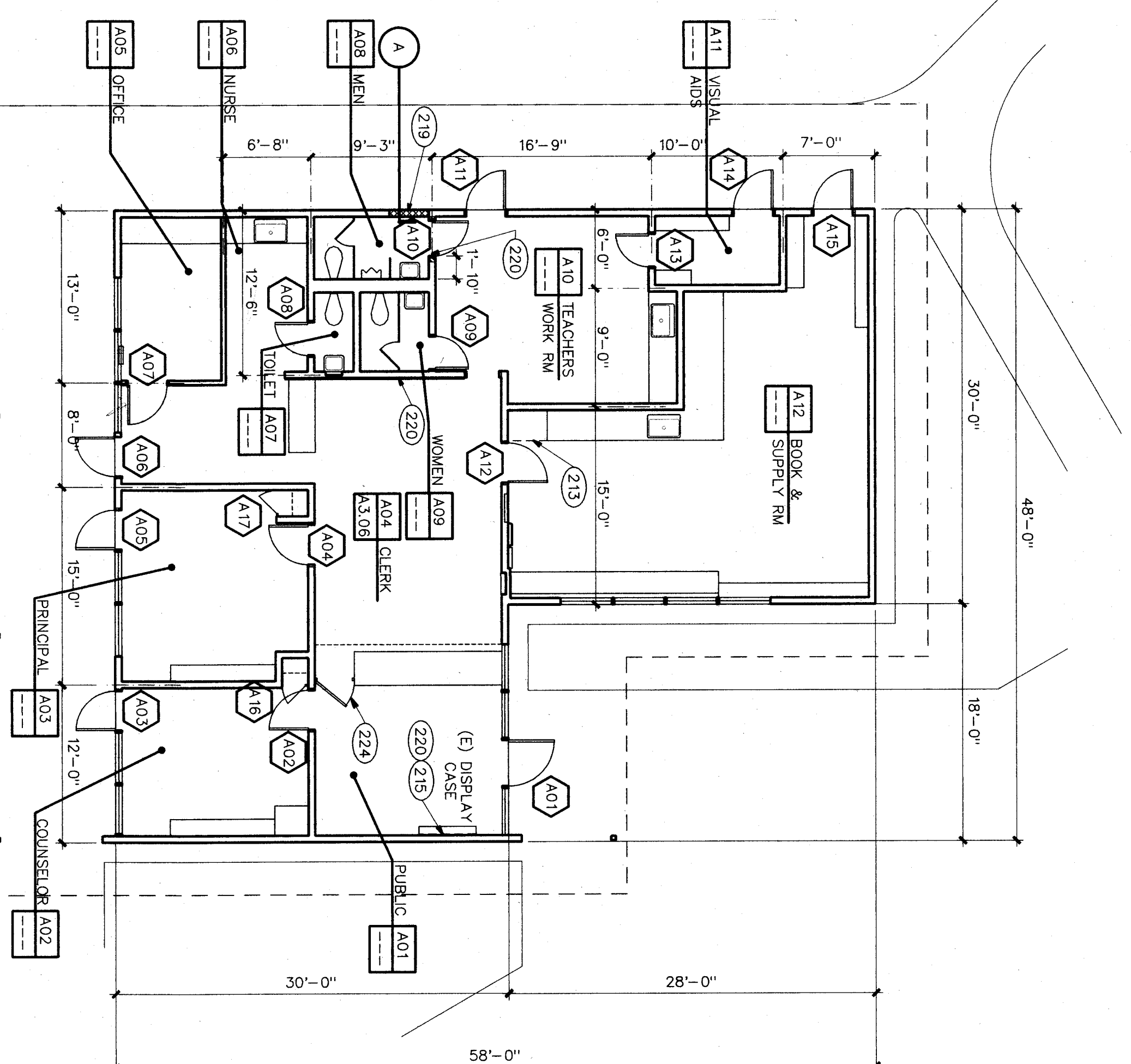
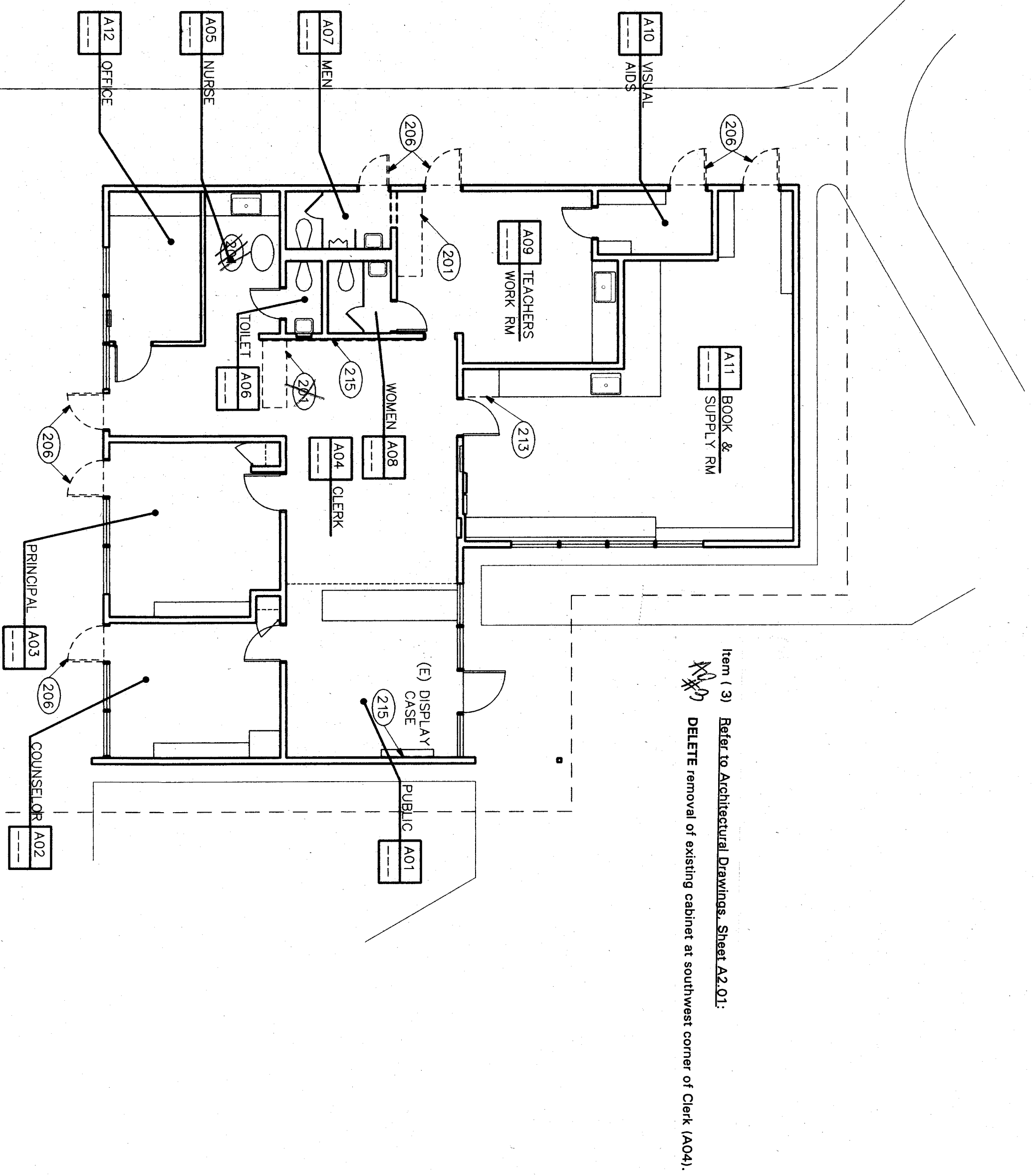


KEYNOTES

- 201 REMOVE (E) CABINETS
- 202 REMOVE (E) WALL
- 203 REMOVE (E) PLUMBING FIXTURE
- 204 REMOVE (E) CHALKBOARD
- 205 REMOVE (E) TAGBOARD
- 206 REMOVE (E) DOOR & FRAME
- 207 REMOVE (E) CARPET
- 208 REMOVE (E) CERAMIC TILE FLOOR
- 209 REMOVE (E) CERAMIC TILE WAINSCOT
- 210 REMOVE (E) DRINKING FOUNTAIN
- 211 REMOVE (E) BOILER
- 212 REMOVE (E) CONCRETE RAMP & HANDRAILS
- 213 REMOVE (E) COUNTERTOP & BASE CABINET SHELVES
- 214 REFRESH EXPOSED END OF CABINETS
- 215 REMOVE (E) FIRE HOSE CABINET
- 216 REMOVE (E) PEGBOARD WALL FACE
- 217 REMOVE (E) MAP RACK & SCREEN
- 218 REMOVE (E) ASPHALT PAVEMENT
- 219 CONCRETE RAMP AND WALKWAY
- 220 INFILL AND PATCH (E) DOOR OPENING, MATCHING THE SAME MATERIALS & FINISH AS EXTERIOR WALLS
- 221 PATCH & FINISH WALL MATCH W/ SAME MATERIALS AND FINISHES AS EXISTING
- 222 PLATFORM LIFT
- 223 PLUMBING FIXTURE
- 224 CABINET SINK
- 225 31"-0" WOOD GATE W/ LATOU (MATCHING) MATCH (E) OFFICE FRONT DESK MATERIAL

LEGEND

- EXISTING WALL TO REMAIN
- TRF. WALL @ BLDG. A
- 2 X 6 WOOD STUDS @ 16" O.C.
- W/ 5/8" GYP. BO. ON BOTH SIDES & " EXTERIOR PLASTER
- OTHER SIDE W/ 5 1/2" BATT. INSULATION
- ALSO WITH 6" HIGH CONCRETE CURB
- TRF. WALL @ BLDG. B
- 2 X 4 WOOD STUDS @ 16" O.C. W/ 5/8" GYP. BO. @ EACH SIDE
- TRF. WALL @ BLDG. C
- 2 X 4 WOOD STUDS @ 16" O.C.
- W/ 5/8" GYP. BO. ON BOTH SIDES AND WITH 5/8" GYP. BO. ON INSIDE WITH WAINSCOT IN ONE SIDE ALSO WITH 6" HIGH CONCRETE CURB
- (E) WALL TO BE REMOVED
- (E) DOOR/FRAME TO BE REMOVED
- (E) DOOR/FRAME TO REMAIN



bfgc architects planners inc.
bakersfield
5500 ming avenue, suite 450 bakersfield ca 93309-4831
805 836-4300 fax 805 836-4311

san luis obispo
3201 broad street suite 103
san luis obispo, california 93401
805 590-0433

san jose
160 west santa ana st. suite 520
san jose, california 95131
408 824-0841

principal architect

dan a. lynch, aia, c-8164
mark a. gregg, aia, c-3132
diana m. lippert, aia, c-23137
james m. mcgovern, aia, c-18079
whitney m. muller, aia, c-81702

HORT SCHOOL MODERNIZATION
BAKERSFIELD CITY SCHOOL DISTRICT

2301 PARK DRIVE
BAKERSFIELD, CA. 93306

FLOOR PLAN
BUILDING A
1/8" = 1'-0"

job no.	97-216
date	JULY 8, 98
drawn by	ALG
chk'd by	ROB T.
copy/right	1997

2301