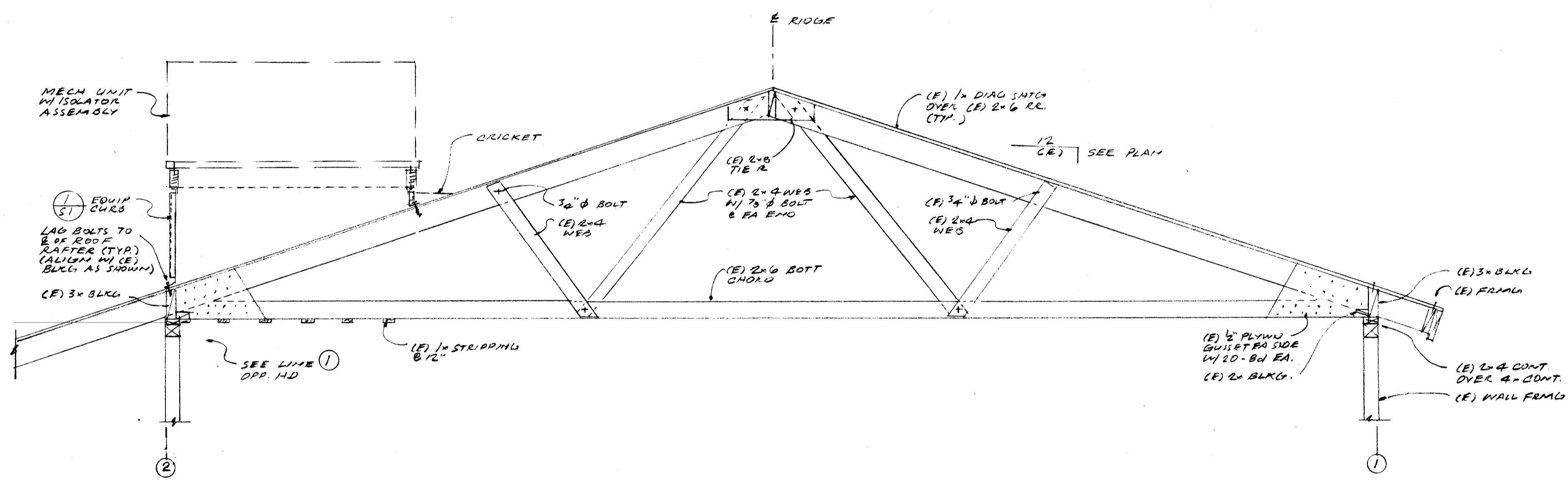
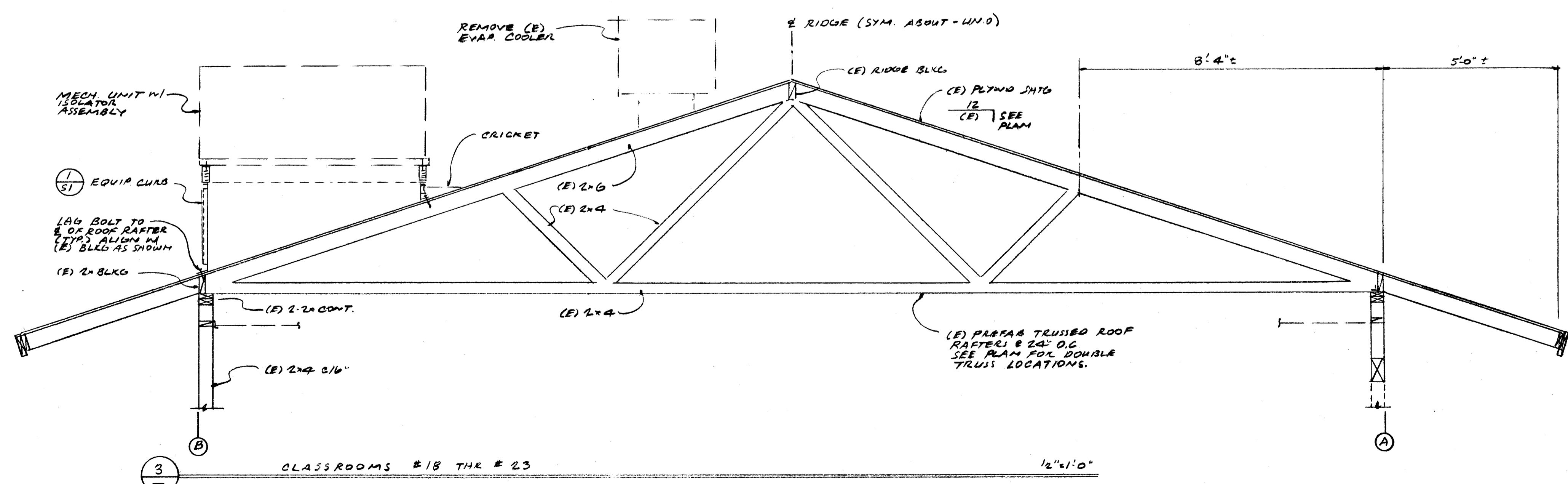


CLASSROOMS #1, #2 AND #17 THRU #17 1/2"=1'-0"



CLASSROOMS #3 THRU #7 AND #8 THRU #11 1/2"=1'-0"



CLASSROOMS #18 THRU #23 1/2"=1'-0"



NO.	REVISION	DATE	BY

FIRE MARSHAL

IDENTIFICATION STAMP
 Department of General Services
 Office of the State Architect
 APR 4 1991
 Structural Safety Section
 Appl. # 1000000000
 Checked by J.G.A.
 O.S.A.

BAKERSFIELD CITY SCHOOL DISTRICT
 BY RESOLUTION OF THE BOARD OF SUPERVISORS APPROVED: *[Signature]*
 DATE: 1-11-91
 DRAWN: J.C.F.
 DETAILS (AIR CONDITIONING)
 HORT SCHOOL
 BAKERSFIELD CITY SCHOOL DISTRICT
 2301 PARK DRIVE, BAKERSFIELD, CALIFORNIA
 Glenn Hartzell A.I.A.
 26 1/4" STREET, 93304 (805) 324-8416
 P.O. BOX 2344, 93303, BAKERSFIELD, CALIFORNIA
 ARCHITECT C-10298 *[Signature]* DATE: 1-1-91
 REGISTERED PROFESSIONAL ENGINEER
 No. 2528
 Exp. 3/31/92
 STATE OF CALIFORNIA
 No. 11-91
 SHEET NO. 142
 SHEET 4 OF 4
 19068