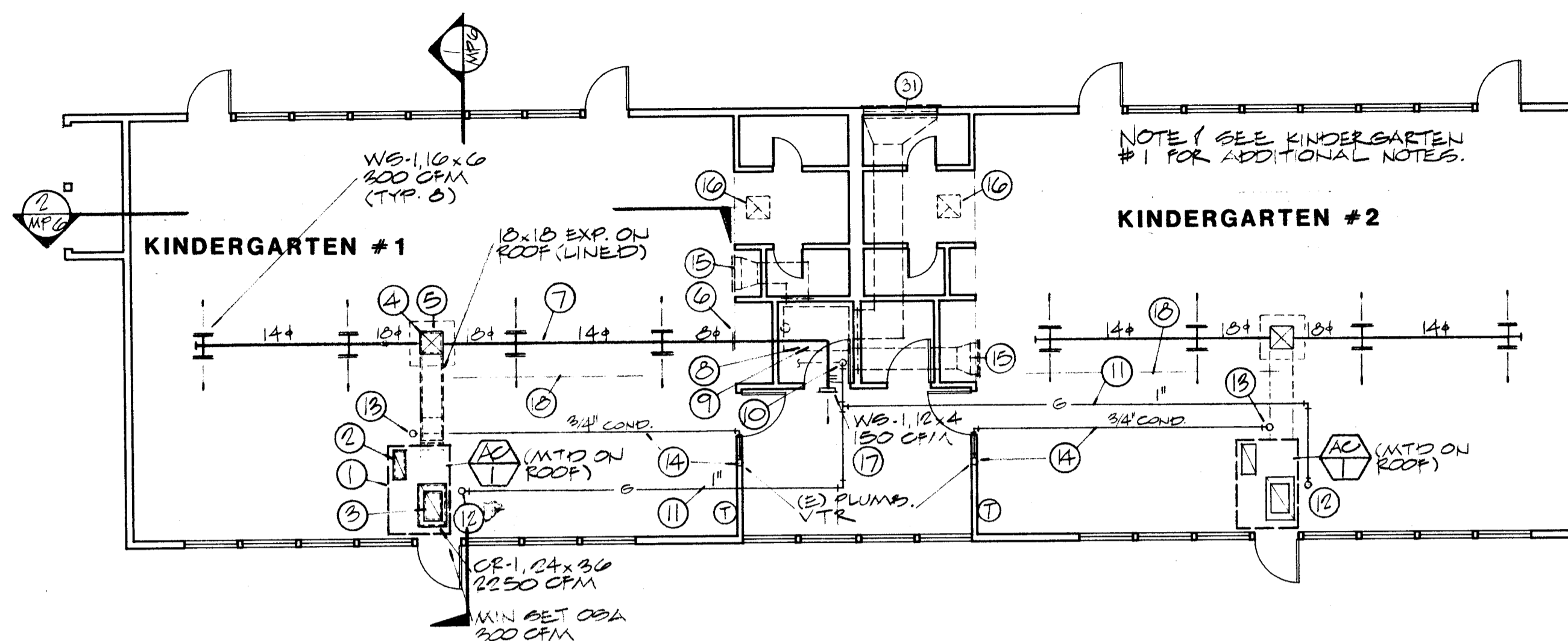
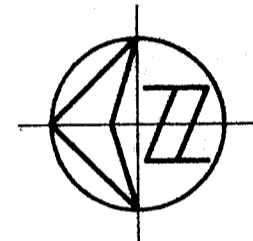


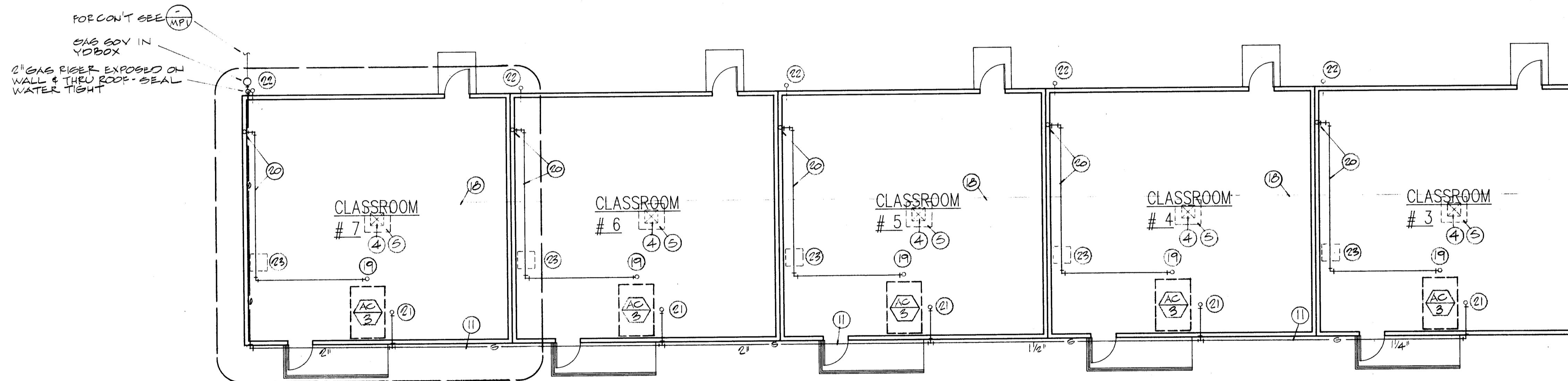
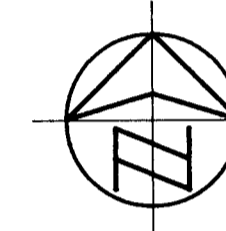
① CLASSROOM BUILDING
MECHANICAL FLOOR PLAN

SCALE: 1/8" = 1'-0"



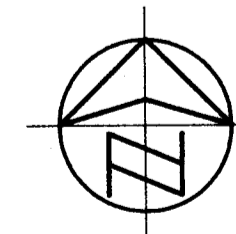
② KINDERGARTEN BUILDING
MECHANICAL FLOOR PLAN

SCALE: 1/8" = 1'-0"



③ CLASSROOM BUILDING
MECHANICAL FLOOR PLAN

SCALE: 1/8" = 1'-0" 5 CLASSROOM WING NEXT TO KINDERGARTEN SEE MP-1



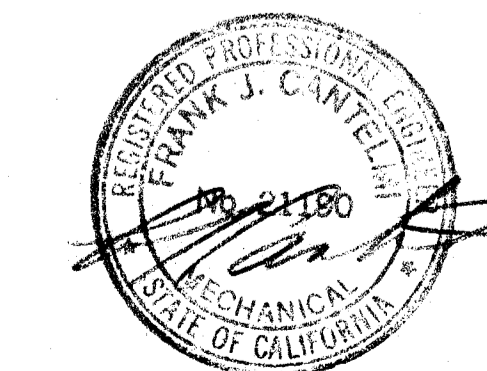
- KEY NOTES
- 1 A.C. UNIT IS TO BE MOUNTED ON SHOP FABRICATED SHEET METAL CURB. ALSO CURB IS TO BE USED AS RA PLENUM LINED WITH 1" - 3 LB VINYL COATED GLASS FIBER LINING. SEAL WATER TIGHT. SEE A.C. MOUNTING DETAILS ON MECHANICAL AND STRUCTURAL DRAWINGS.
 - 2 26 X 12 (NOM. SIZE) RA DROP FROM UNIT INTO TOP OF CURB/PLENUM.
 - 3 26 X 16 RA DROP FROM PLENUM TO RA REGISTER.
 - 4 EXISTING ROOF JACK TO BE RE-USED. FIELD VERIFY SIZE. CHECK TO MAKE SURE JACK IS WATER TIGHT. SEAL AS REQUIRED.
 - 5 REMOVE EXISTING EVAPORATIVE COOLER. PROPERLY DISCONNECT ELECTRICAL AND CAP WATER LINE. REMOVE IF EXPOSED.
 - 6 DUCT TO PASS THRU EXISTING WALL. CUT HOLE IN A NEAT MANNER AND FINISH WITH FLANGE ALL AROUND.
 - 7 EXPOSED SPIRAL DUCT SUSPENDED BELOW 'T' BAR CEILING. INSTALL IN A NEAT MANNER. ALIGN SPIRALS AT JOINTS.
 - 8 EXISTING FURNACE TO BE REMOVED. CAP DUCTS AT WALL WITH SHEET METAL PANEL WITH HEMMED EDGES. FLUE THRU ROOF TO REMAIN. CAP WITH SHEET METAL PANEL AT CEILING. PROPERLY DISCONNECT ELECTRICAL AND REMOVE GAS PIPING TO CEILING.
 - 9 EXISTING CONCRETE PIT TO BE FILLED IN AS DETAILED ON ARCHITECTURAL DRAWINGS.
 - 10 CONNECT 1" GAS TO EXISTING ABOVE CEILING AND RISE THRU ROOF. FLASH WATER TIGHT. DETAIL 4/MPG.
 - 11 GAS LINE EXPOSED ON ROOF TO A.C. UNITS. SEE PIPE SUPPORT DETAIL.
 - 12 1" GAS TO UNIT WITH GAS COCK.
 - 13 3/4" CONDENSATE TO A.C. UNIT WITH TRAP.
 - 14 3/4" CONDENSATE DRAIN EXPOSED ON ROOF. CONNECT TO EXISTING PLUMBING VENT. FIELD VERIFY. SEE PIPE SUPPORT DETAIL.
 - 15 EXISTING REGISTER TO REMAIN.
 - 16 EXISTING RELIEF VENT TO REMAIN INCLUDING GRILLE, DUCT, MOTORIZED DAMPER AND ROOF CAP. INTERLOCK WITH A.C. UNIT TO OPEN WHEN UNIT IS ON AND CLOSE WHEN UNIT IS OFF.
 - 17 CUT IN REGISTER ABOVE DOOR IN A NEAT MANNER.
 - 18 REMOVE EXISTING WATER LINE FROM ROOF AND CAP AT SOURCE, PATCH ROOF WATER TIGHT AT REMOVED PIPE SUPPORTS.
 - 19 3/4" CONDENSATE DRAIN CONNECTION AT A.C. UNIT WITH TRAP. DROP THRU ROOF. FLASH WATER TIGHT.
 - 20 3/4" CONDENSATE IN ATTIC. CONNECT TO EXISTING PLUMBING VENT. FIELD VERIFY FOR EXACT ROUTING.
 - 21 1 1/4" GAS TO UNIT WITH GAS COCK.
 - 22 EXISTING GAS INTO BUILDING. DISCONNECT AND CAP BELOW GRADE. TYPICAL 9 LOCATIONS.
 - 23 REMOVE EXISTING FURNACE. PROPERLY DISCONNECT ELECTRICAL. REMOVE GAS LINE TO BELOW FLOOR. FLUE CAP & FLASHING TO REMAIN @ ROOF. REPAIR GASKET AROUND FURNACE.
 - 24 CAP EXISTING ROOF JACK. SEAL WATER TIGHT.
 - 25 REMOVE EXISTING FURNACE AND MOUNTING FRAME FROM ROOF.
 - 26 DUCTWORK IN ATTIC.
 - 27 CONNECT 3/4" GAS TO EXISTING ON ROOF. EXTEND ON ROOF TO A.C. UNIT. SEE PIPE SUPPORT DETAIL.
 - 28 3/4" GAS TO UNIT WITH GAS COCK.
 - 29 CAP EXISTING WATER LINE ON ROOF.
 - 30 REMOVE EXISTING DUCTWORK IN ATTIC AS REQUIRED TO INSTALL NEW SYSTEM.
 - 31 REMOVE EXISTING OUTSIDE AIR GRILLE - CAP DUCT AND REINSTALL GRILLE.

NO.	REVISION	DATE	BY

APPROVED
FIRE AND PANIC ONLY
APR 4 1991
STATE FIRE MARSHALL
SOUTHERN REGION

FIRE MARSHAL
APR 4 1991

IDENTIFICATION STAMP
Department of General Services
Office of the State Architect
APR 4 1991
Structural Safety Group
A 55 A 9565.0
S.P.L.A.
O.S.A.



Glenn Hartzell A.I.A.
 26 H STREET, 93304
 P.O. BOX 2344, 93303, BAKERSFIELD, CALIFORNIA
 ARCHITECT C-10298
 DATE: 11-91
 DRAWN: GS
 MECHANICAL FLOOR PLANS - NOTES
 (AIR CONDITIONING)
 HORT SCHOOL
 BAKERSFIELD CITY SCHOOL DISTRICT
 2301 PARK DRIVE, BAKERSFIELD, CALIFORNIA
 JOB NO. 142
 SHEET NO. MP4
 SHEET 4 OF 6