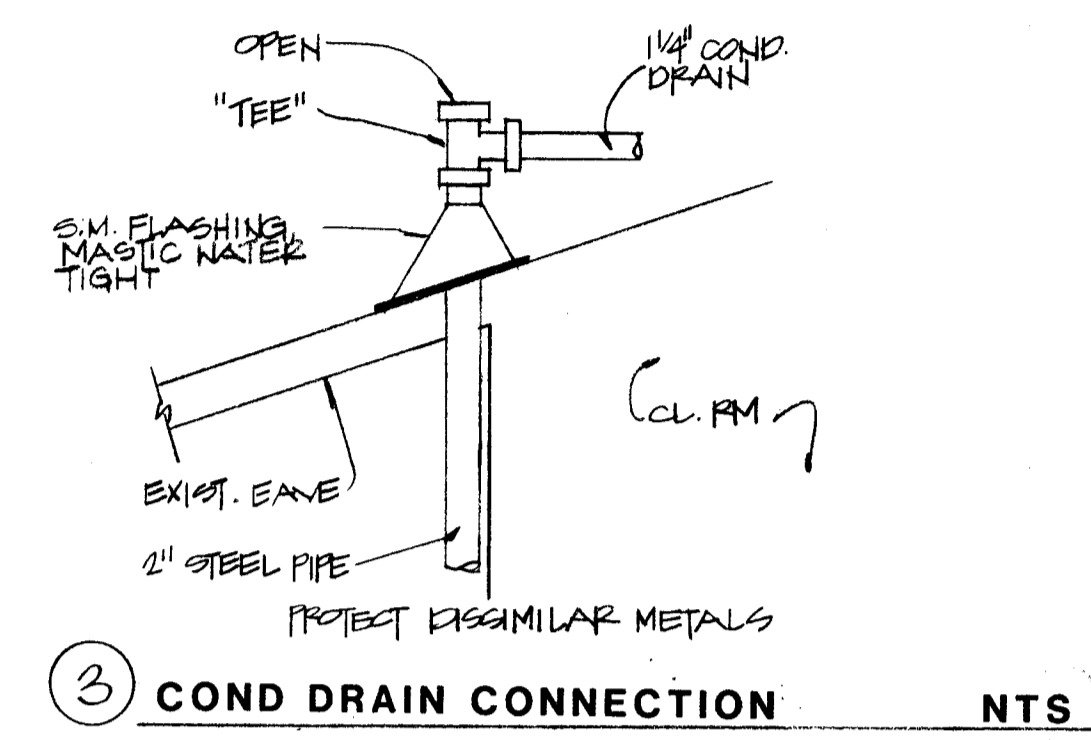
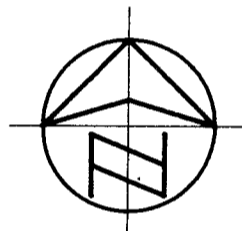
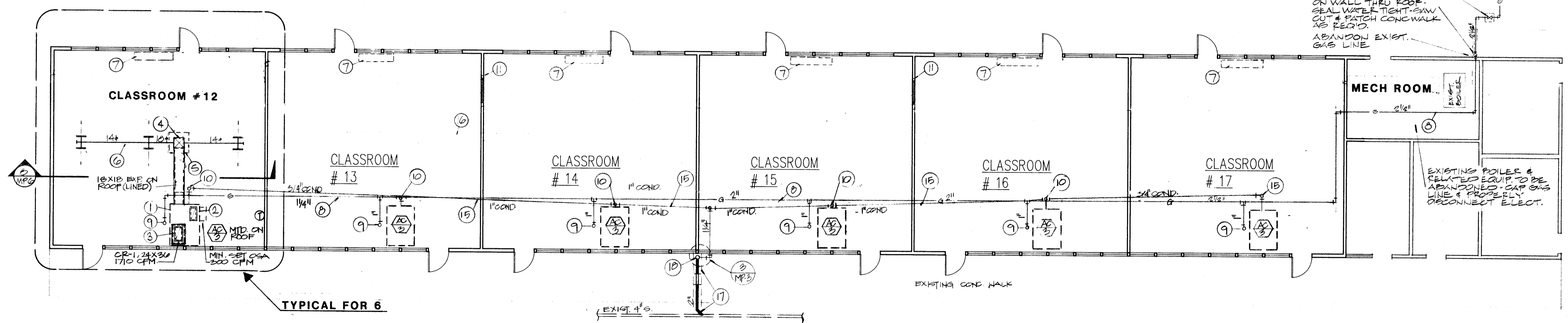


① CLASSROOM BUILDING
MECHANICAL FLOOR PLAN

SCALE: 1/8" = 1'-0"

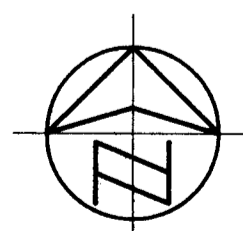


- KEY NOTES
- A.C. UNIT IS TO BE MOUNTED ON SHOP FABRICATED SHEET METAL CURB. ALSO CURB IS TO BE USED AS A RA PLENUM LINED WITH 1" - 3 LB VINYL COATED GLASS FIBER LINING. SEAL WATER TIGHT. SEE A.C. MOUNTING DETAILS ON MECHANICAL AND STRUCTURAL DRAWINGS.
 - 26 X 12 (NOM. SIZE) RA DROP FROM UNIT INTO TOP OF CURB/PLENUM.
 - 26 X 16 RA DROP FROM PLENUM TO RA REGISTER.
 - EXISTING ROOF JACK TO BE RE-USED. FIELD VERIFY SIZE. CHECK TO MAKE SURE JACK IS WATER TIGHT. SEAL AS REQUIRED.
 - REMOVE EXISTING EVAPORATIVE COOLER. PROPERLY DISCONNECT ELECTRICAL AND CAP WATER LINE. REMOVE WATER LINE BACK TO SOURCE.
 - EXPOSED SPIRAL DUCT SUSPENDED BELOW 1" BAR CEILING. INSTALL IN A NEAT MANNER. ALIGN SPIRALS AT JOINTS.
 - EXISTING UNIT VENTILATOR TO BE REMOVED. ABANDON EXISTING HW PIPING. CAP BELOW FINISHED FLOOR. PROPERLY DISCONNECT ELECTRICAL. COVER WALL LOUVERS INSIDE WITH SHEET METAL PANELS. HEM ALL EDGES.
 - GAS LINE EXPOSED ON ROOF TO A.C. UNITS. SEE PIPE SUPPORT DETAIL.
 - 1 1/4" GAS TO UNIT WITH GAS COCK.
 - 3/4" CONDENSATE TO A.C. UNIT WITH TRAP.
 - CONNECT CONDENSATE DRAIN TO EXISTING PLUMBING VENT.
 - DUCTWORK IN ATTIC SPACE.
 - REMOVE EXISTING FURNACE. PROPERLY DISCONNECT ELECTRIC. REMOVE GAS LINE TO BELOW FLOOR.
 - REMOVE EXISTING GAS LINE FORM AROUND BUILDING AT EAVE.
 - CONDENSATE DRAIN EXPOSED ON ROOF. START AT FURTHEST UNIT AS HIGH AS POSSIBLE AND SLOPE DOWN TOWARDS EXISTING PLUMBING VENT. MAINTAIN A MINIMUM OF 1% SLOPE. SEE PIPE SUPPORT DETAIL.
 - REMOVE EXISTING WATER LINE FROM ROOF AND CAP AT SOURCE. PATCH ROOF WATER TIGHT AT REMOVED PIPE SUPPORTS.
 - CONNECT 2" W.P. TO EXIST. FIELD VERIFY & EXTEND ACROSS TO WALL & PIPE ABOVE WALK. PATCH WALK TO MATCH EXIST.
 - 2" STEEL PIPE TO RISE EXPOSED ON WALL THRU ROOF. PAINT PIPE TO MATCH WALL - SEE DETAIL 3/MP3



② CLASSROOM BUILDING
MECHANICAL FLOOR PLAN

SCALE: 1/8" = 1'-0"



NO.	REVISION	DATE	BY

APPROVED
FIRE AND PANIC ONLY
APR 4 1991
STATE FIRE MARSHAL
SOUTHERN REGION

FIRE MARSHAL

IDENTIFICATION SYSTEM
Department of General Services
Office of the State Fire Marshal
APR 4 1991
Structural Safety Section
Approved By: J.P. L.A.

O.S.A.

BAKERSFIELD CITY SCHOOL DISTRICT
 BY RESOLUTION OF THE BOARD OF TRUSTEES APPROVED
 Glenn Hartzell A.I.A.
 (805) 324-6416
 26 'H' STREET, 93304
 P.O. BOX 2344, BAKERSFIELD, CALIFORNIA
 ARCHITECT C-10298
 DATE: 1-11-91
 DRAWN: G.S.
 MECHANICAL FLOOR PLANS - NOTES
 (AIR CONDITIONING)
 HORT SCHOOL
 BAKERSFIELD CITY SCHOOL DISTRICT
 2301 PARK DRIVE, BAKERSFIELD, CALIFORNIA
 JOB NO. 142
 SHEET NO. MP3
 SHEET 3 OF 6