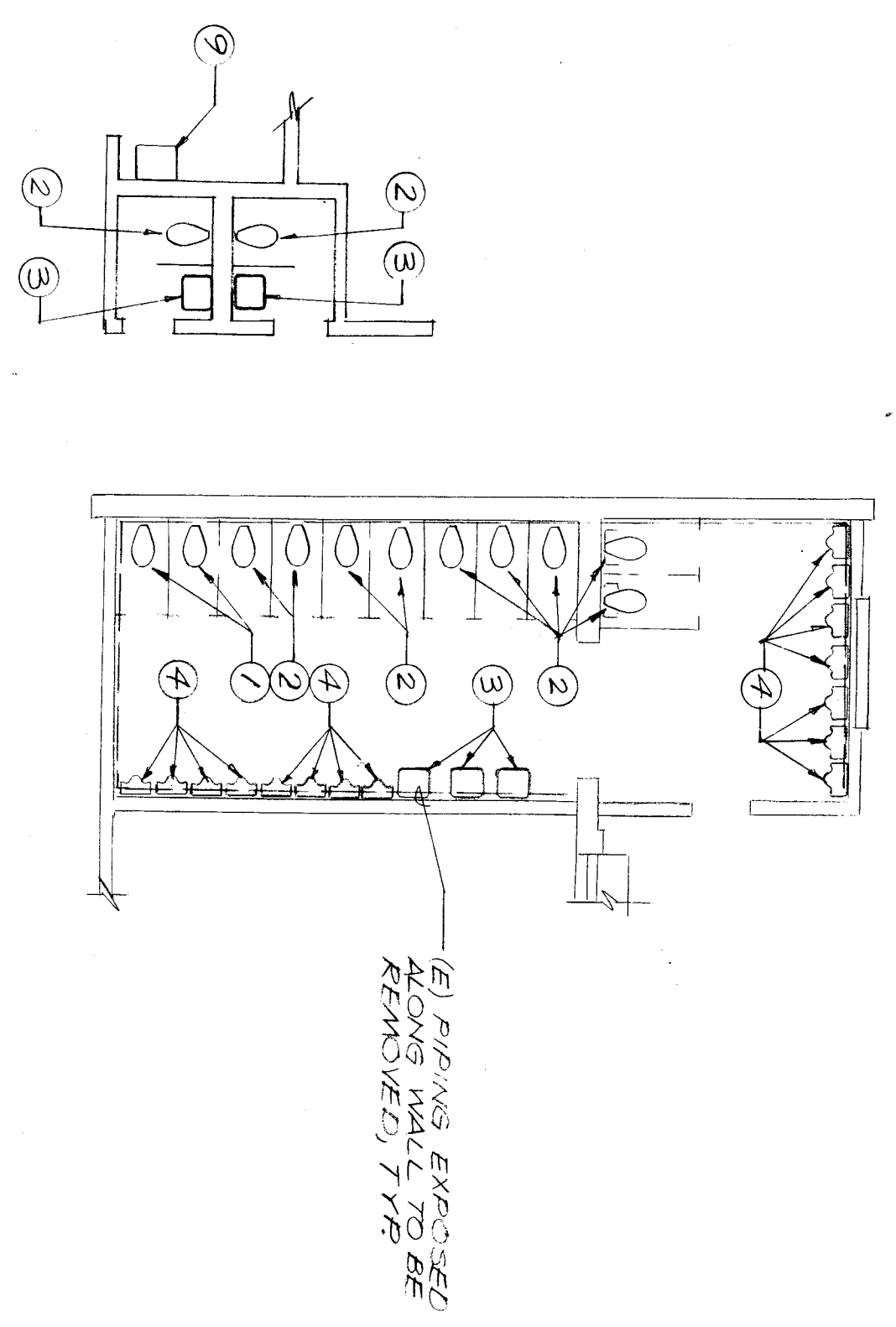


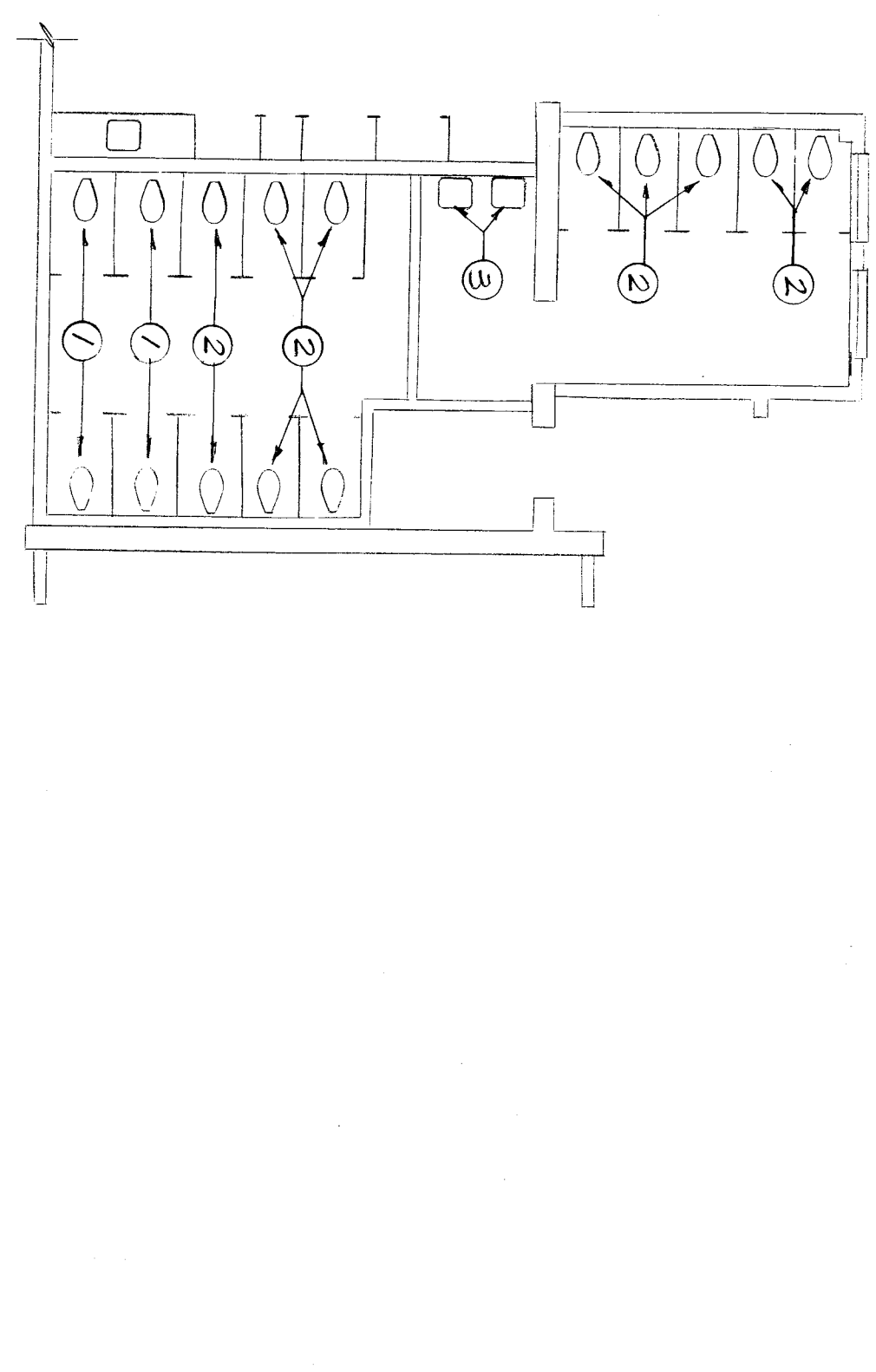
PLUMBING FIXTURE AND EQUIPMENT SCHEDULE

MARK	FIXTURE	CONNECTION SIZES	H.M.	DESCRIPTION
ED-1	FLOOR DRAIN	2" - 1-1/2"	-	JAY R. SMITH #200-8, 1/2" SLOPE NICKEL BRASS 1/2" SLOPE TRAP PRIMER CONNECTION WHEN APPLICABLE.
HB-1	HOSE BIBB	-	3/4"	CHICAGO #82 POLISHED COPPER WALL HOSE LOCKSHIELD, VACUUM BREAKER AND REMOVABLE HANDLE.
HB-2	HOSE BIBB	-	3/4"	ACORN #8121 ROUGH BRONZE WALL HOSE VALVE W/VACUUM-PROOF LOCKSHIELD, VACUUM BREAKER AND REMOVABLE HANDLE.
FL-1	FLUSH VALVE	-	1"	SLOAN "ROYAL" #110-3 FLUSH VALVE.
WC-1	WATER CLOSET SEAT	-	-	GLSQUITE #95 C/C/S OPEN-FRONT SEAT.
MC-1	WATER CLOSET SEAT	-	-	CHICAGO #335-E12 "TIP-TAP" SELF-CLOSING FAUCET INDEXED "C" BRID AMERICAN STANDARD #2411.015 GRID DRAIN.
LI-1	LAVATORY TRIM	-	1/2"	AMERICAN STANDARD #444 "ALLBROOK" #6540.017 WITH SLOAN "ROYAL" #180 FLUSH VALVE, AND JAY R. SMITH #444 SUPPORT CARRIER.
LI-2	LAVATORY TRIM	-	1/2"	CHICAGO #100-E12 "QUARTZ" BASIN WITH 1/2" SLOPE SEAFLOOR INDEXED "C" AND ONE WITH "H" AND AMERICAN STANDARD #2411.015 GRID DRAIN.
UI-1	URINAL	2" - 1-1/2"	1"	AMERICAN STANDARD #444 "ALLBROOK" #6540.017 WITH SLOAN "ROYAL" #180 FLUSH VALVE, AND JAY R. SMITH #444 SUPPORT CARRIER.
UI-2	URINAL	2" - 1-1/2"	1"	AMERICAN STANDARD #444 "ALLBROOK" #6540.017 WITH SLOAN "ROYAL" #180 FLUSH VALVE, AND JAY R. SMITH #444 SUPPORT CARRIER.
LI-1	LAVATORY	2" - 1-1/2"	1/2"	AMERICAN STANDARD "NEW LUCERNE" #0355.012, 20" X 18" WITH #2411.015 GRID DRAIN, #200-100 SINGLE LEVER FAUCET AND JAY R. SMITH #700-2 SUPPORT CARRIER, MOUNT AT HANDICAP HEIGHT, SEE ARCH.
LI-2	LAVATORY	2" - 1-1/2"	1/2"	AMERICAN STANDARD "NEW LUCERNE" #0355.012, 20" X 18" WITH #2411.015 GRID DRAIN, #200-100 SINGLE LEVER FAUCET AND JAY R. SMITH #700-2 SUPPORT CARRIER.
EPF-1	ELECTRIC DRINKING FOUNTAIN	2" - 1-1/2"	1/2"	AMERICAN STANDARD "NEW LUCERNE" #0355.012, 20" X 18" WITH #2411.015 GRID DRAIN, #200-100 SINGLE LEVER FAUCET AND JAY R. SMITH #700-2 SUPPORT CARRIER.

- RENOTES
- EXISTING WATER CLOSET TO BE REMOVED AND RELOCATED IN NEW TOILET ROOMS. **DO NOT** CAP PIPING BEHIND FINISH SURFACES. SEE REMODEL DETAILS C AND D/MP-6.
  - EXISTING WATER CLOSET TO BE REMOVED. CAP PIPING BEHIND FINISH SURFACES.
  - EXISTING LAVATORY TO BE REMOVED AND RELOCATED IN NEW TOILET ROOMS. **DO NOT** CAP PIPING BEHIND FINISH SURFACES.
  - EXISTING URINAL TO BE REMOVED. CAP PIPING BEHIND FINISH SURFACES.
  - NEW LOCATION OF EXISTING WATER CLOSET. SCOUR CLEAN AND SET FAN FOR NEW PIPING.
  - NOT USED
  - NEW LOCATION OF EXISTING LAVATORY. SCOUR CLEAN AND PROVIDE NEW URINAL, TAILPIECE, P-TRAP, TRAP ARM, SUPPLY AND STOP. SEE REMODEL DETAILS C AND D/MP-6.
  - NEW LOCATION OF EXISTING LAVATORY AT HANDICAP HEIGHT. PROVIDE FINISH ABOVE P-TRAP, TRAP ARM, SUPPLY AND STOP. SEE REMODEL DETAILS C AND D/MP-6.
  - EXISTING SERVICE SINK TO BE REMOVED. CAP PIPING BEHIND FINISH SURFACES.
  - NOT USED
  - EXISTING F.O.D. TO REMAIN. PROVIDE NEW NICKEL BRONZE STRAINER. FLUSH WITH FLOOR.

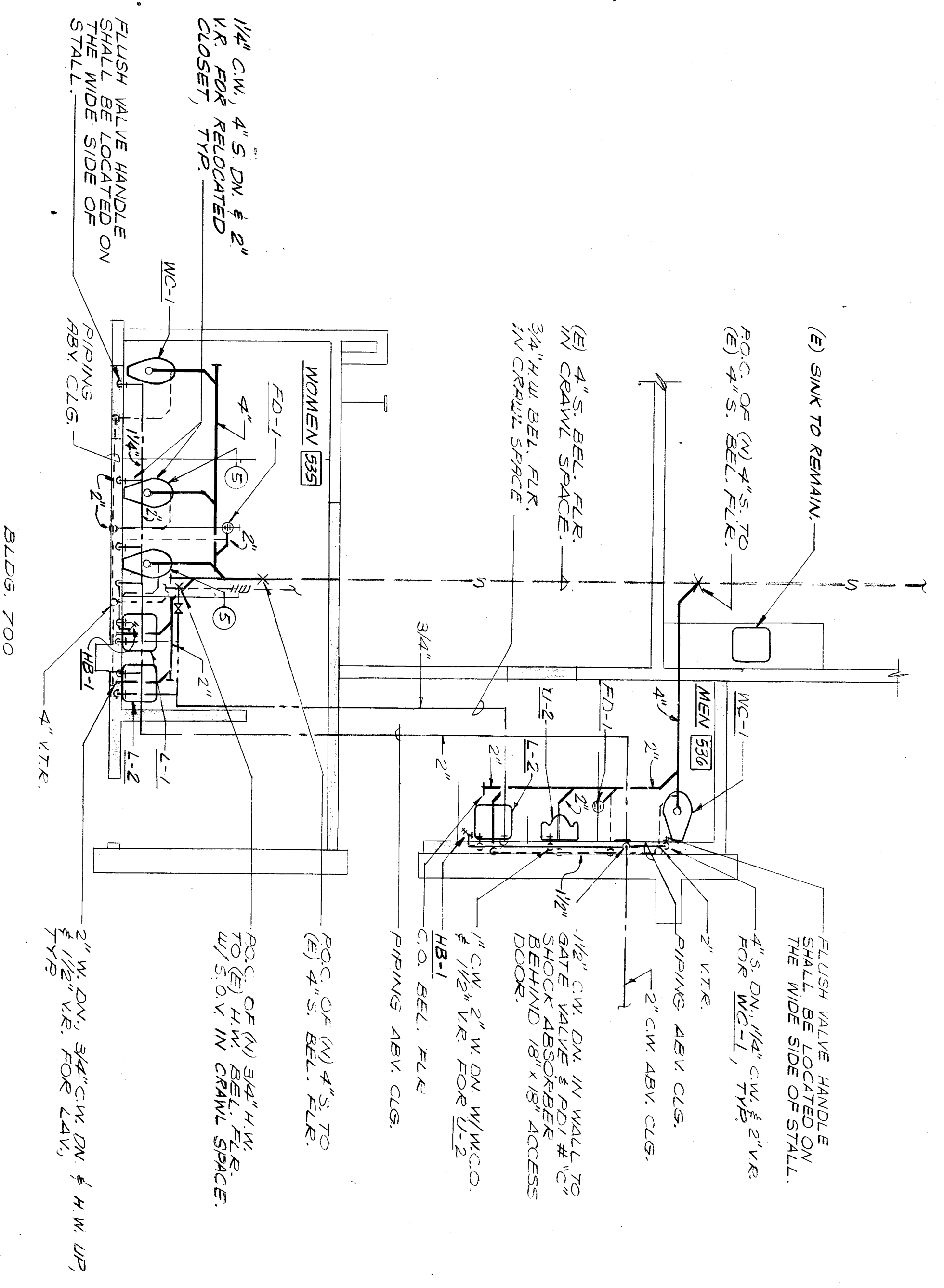


PLUMBING DEMOLITION PLAN  
SCALE: 1/8" = 1'-0"

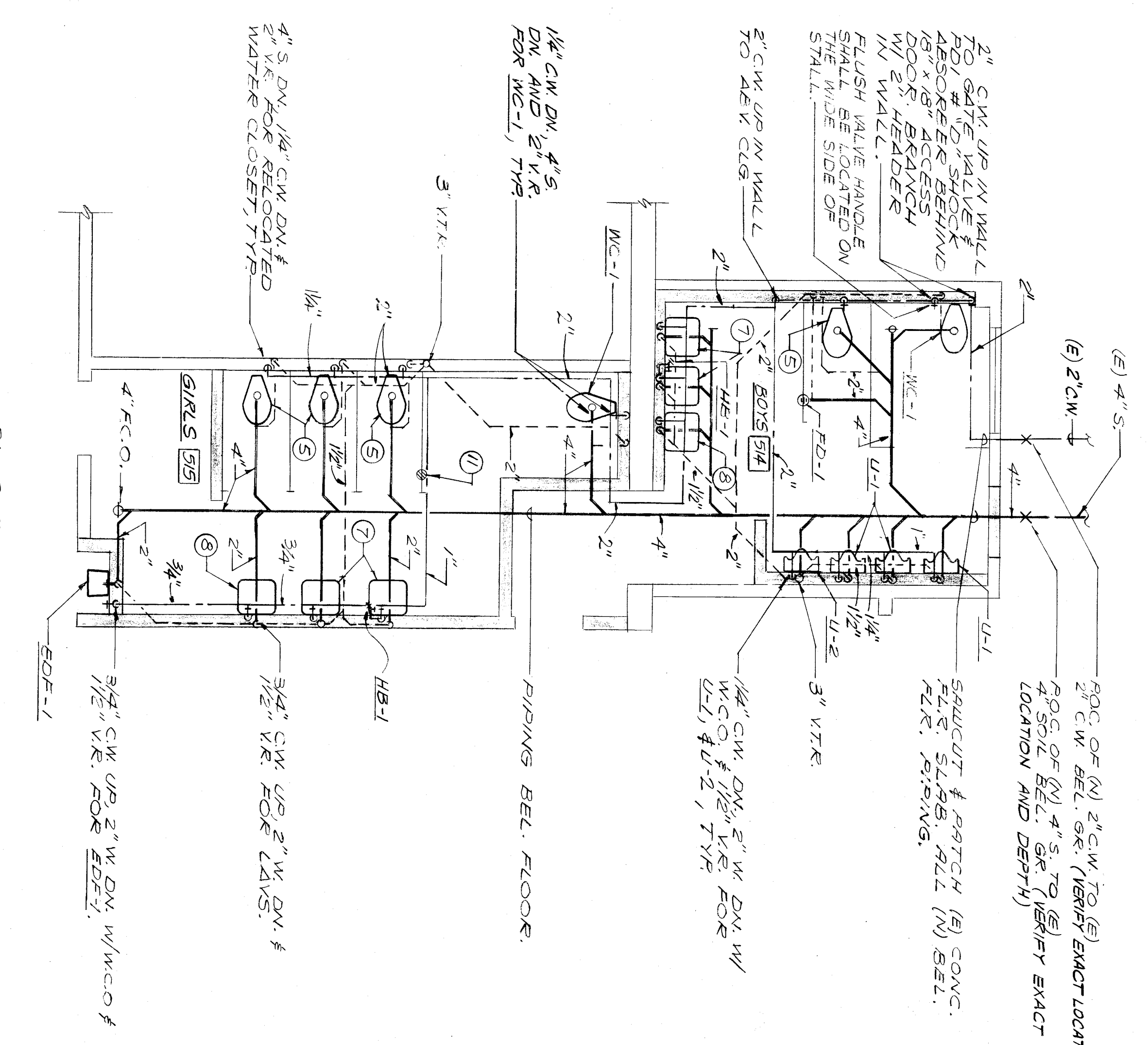


PLUMBING DEMOLITION PLAN  
SCALE: 1/8" = 1'-0" ALZAKWIZ 1/2" 3/4"

NOTE:  
1. PLUMBING FIXTURES THAT ARE TO BE REMOVED ARE TO BE DELIVERED TO THE SCHOOL DISTRICT.



PLUMBING REMODEL PLAN  
SCALE: 1/4" = 1'-0"



PLUMBING REMODEL PLAN  
SCALE: 1/4" = 1'-0" ALZAKWIZ 1/2" 3/4"

APPROVAL

DATE

PROJECT

Donald R. Lawrence & Associates  
CONSULTING MECHANICAL ENGINEERS, INCORPORATED  
1000 W. STATE AVENUE, SUITE 212  
DENVER, COLORADO 80202  
TEL: 303.733.1111 FAX: 303.733.1111

DATE

PROJECT

DR. ORENTH

architects planners  
3150 SOUTH ROAD, SUITE 1000  
DENVER, COLORADO 80202  
303.532.8122

PLUMBING DETAILS & SCHEDULES  
HORACE MANN MODERNIZATION  
BAKERSFIELD CITY SCHOOL DISTRICT  
BAKERSFIELD, CALIFORNIA 93307

DATE: FEB 94  
PROJECT: MP-6

