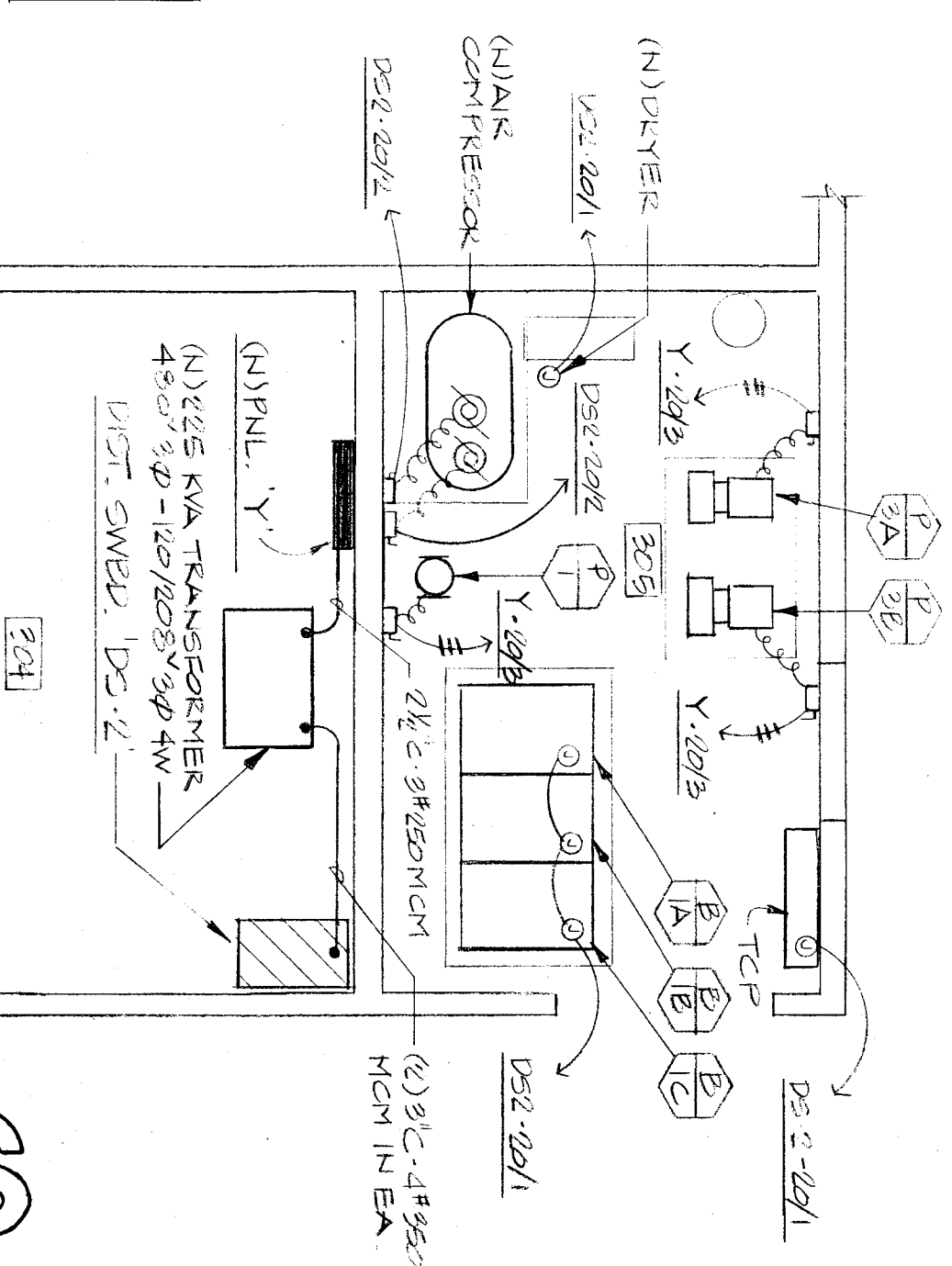
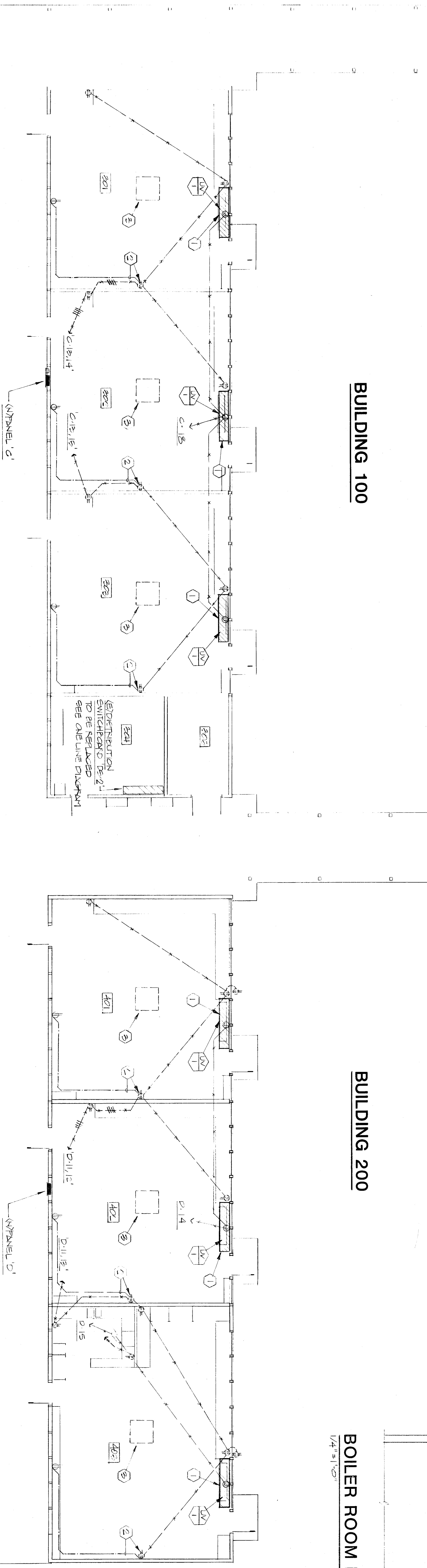


BUILDING 100



BOILER ROOM PLAN
1/4" = 1'-0"



BUILDING 200

BUILDING 300

BUILDING 400

FLOOR PLANS - POWER

1/8" = 1'-0"

PANEL B (BLDG 200)

CIRCUIT	WATTAGE	USE	LOAD TYPE	CB	TYPE	LOAD TYPE	USE	CIRCUIT WATTAGE
NO.	VA		CB	NO.	NO.	CB		VA
100	0.0	0.0						0.0
101	0.0	0.0						0.0
102	0.0	0.0						0.0
103	0.0	0.0						0.0
104	0.0	0.0						0.0
105	0.0	0.0						0.0
106	0.0	0.0						0.0
107	0.0	0.0						0.0
108	0.0	0.0						0.0
109	0.0	0.0						0.0
110	0.0	0.0						0.0
111	0.0	0.0						0.0
112	0.0	0.0						0.0
113	0.0	0.0						0.0
114	0.0	0.0						0.0
115	0.0	0.0						0.0
116	0.0	0.0						0.0
117	0.0	0.0						0.0
118	0.0	0.0						0.0
119	0.0	0.0						0.0
120	0.0	0.0						0.0
121	0.0	0.0						0.0
122	0.0	0.0						0.0
123	0.0	0.0						0.0
124	0.0	0.0						0.0
125	0.0	0.0						0.0
126	0.0	0.0						0.0
127	0.0	0.0						0.0
128	0.0	0.0						0.0
129	0.0	0.0						0.0
130	0.0	0.0						0.0
131	0.0	0.0						0.0
132	0.0	0.0						0.0
133	0.0	0.0						0.0
134	0.0	0.0						0.0
135	0.0	0.0						0.0
136	0.0	0.0						0.0
137	0.0	0.0						0.0
138	0.0	0.0						0.0
139	0.0	0.0						0.0
140	0.0	0.0						0.0
141	0.0	0.0						0.0
142	0.0	0.0						0.0
SUB-TOTAL								
TOTAL								

VOLTS 120/208V 3PH 4W
FEDERAL 2001
BUS 100A
SYSTEM SHORT CIRCUIT RATING (SWM)

PANEL C (BLDG 300)

CIRCUIT	WATTAGE	USE	LOAD TYPE	CB	TYPE	LOAD TYPE	USE	CIRCUIT WATTAGE
NO.	VA		CB	NO.	NO.	CB		VA
100	0.0	0.0						0.0
101	0.0	0.0						0.0
102	0.0	0.0						0.0
103	0.0	0.0						0.0
104	0.0	0.0						0.0
105	0.0	0.0						0.0
106	0.0	0.0						0.0
107	0.0	0.0						0.0
108	0.0	0.0						0.0
109	0.0	0.0						0.0
110	0.0	0.0						0.0
111	0.0	0.0						0.0
112	0.0	0.0						0.0
113	0.0	0.0						0.0
114	0.0	0.0						0.0
115	0.0	0.0						0.0
116	0.0	0.0						0.0
117	0.0	0.0						0.0
118	0.0	0.0						0.0
119	0.0	0.0						0.0
120	0.0	0.0						0.0
121	0.0	0.0						0.0
122	0.0	0.0						0.0
123	0.0	0.0						0.0
124	0.0	0.0						0.0
125	0.0	0.0						0.0
126	0.0	0.0						0.0
127	0.0	0.0						0.0
128	0.0	0.0						0.0
129	0.0	0.0						0.0
130	0.0	0.0						0.0
131	0.0	0.0						0.0
132	0.0	0.0						0.0
133	0.0	0.0						0.0
134	0.0	0.0						0.0
135	0.0	0.0						0.0
136	0.0	0.0						0.0
137	0.0	0.0						0.0
138	0.0	0.0						0.0
139	0.0	0.0						0.0
140	0.0	0.0						0.0
141	0.0	0.0						0.0
142	0.0	0.0						0.0
SUB-TOTAL								
TOTAL								

VOLTS 120/208V 3PH 4W
FEDERAL 2001
BUS 100A
SYSTEM SHORT CIRCUIT RATING (SWM)

PANEL D (BLDG 400)

CIRCUIT	WATTAGE	USE	LOAD TYPE	CB	TYPE	LOAD TYPE	USE	CIRCUIT WATTAGE
NO.	VA		CB	NO.	NO.	CB		VA
100	0.0	0.0						0.0
101	0.0	0.0						0.0
102	0.0	0.0						0.0
103	0.0	0.0						0.0
104	0.0	0.0						0.0
105	0.0	0.0						0.0
106	0.0	0.0						0.0
107	0.0	0.0						0.0
108	0.0	0.0						0.0
109	0.0	0.0						0.0
110	0.0	0.0						0.0
111	0.0	0.0						0.0
112	0.0	0.0						0.0
113	0.0	0.0						0.0
114	0.0	0.0						0.0
115	0.0	0.0						0.0
116	0.0	0.0						0.0
117	0.0	0.0						0.0
118	0.0	0.0						0.0
119	0.0	0.0						0.0
120	0.0	0.0						0.0
121	0.0	0.0						0.0
122	0.0	0.0						0.0
123	0.0	0.0						0.0
124	0.0	0.0						0.0
125	0.0	0.0						0.0
126	0.0	0.0						0.0
127	0.0	0.0						0.0
128	0.0	0.0						0.0
129	0.0	0.0						0.0
130	0.0	0.0						0.0
131	0.0	0.0						0.0
132	0.0	0.0						0.0
133	0.0	0.0						0.0
134	0.0	0.0						0.0
135	0.0	0.0						0.0
136	0.0	0.0						0.0
137	0.0	0.0						0.0
138	0.0	0.0						0.0
139	0.0	0.0						0.0
140	0.0	0.0						0.0
141	0.0	0.0						0.0
142	0.0	0.0						0.0
SUB-TOTAL								
TOTAL								

VOLTS 120/208V 3PH 4W
FEDERAL 2001
BUS 100A
SYSTEM SHORT CIRCUIT RATING (SWM)

- REFERENCE NOTES (THIS SHEET ONLY):
- 1 CONNECT NEW UNIT VENTILATOR TO EXISTING FAN COIL CIRCUIT VIA EXISTING RACEWAY.
 - 2 INSTALL WIREMOLD EXTENSION BOX ON EXISTING OUTLET AND RUN SURFACE WIREMOLD #500 TO NEW OUTLET BOILER ROOM.
 - 3 REMOVE ALL EXISTING ROOF CONDUITS, DISCONNECT AND ELECTRICAL EQUIPMENT - LISTED TO EMPHASIZE CONDUITS ON ROOM.

INTERSTATE ENGINEERING, INC.
ARCHITECTS - PLANNERS

DP DESIGN

bigc inc.
architects planners
31 SOUTH HILL ROAD, SUITE 200
BAKERSFIELD, CALIFORNIA 93309
805.832.8122

HORACE MANN MODERNIZATION
BAKERSFIELD CITY SCHOOL DISTRICT
2710 NILES AVENUE
BAKERSFIELD, CALIFORNIA 93307

DATE: 07/1/17
REV: 01
SHEET: 5

