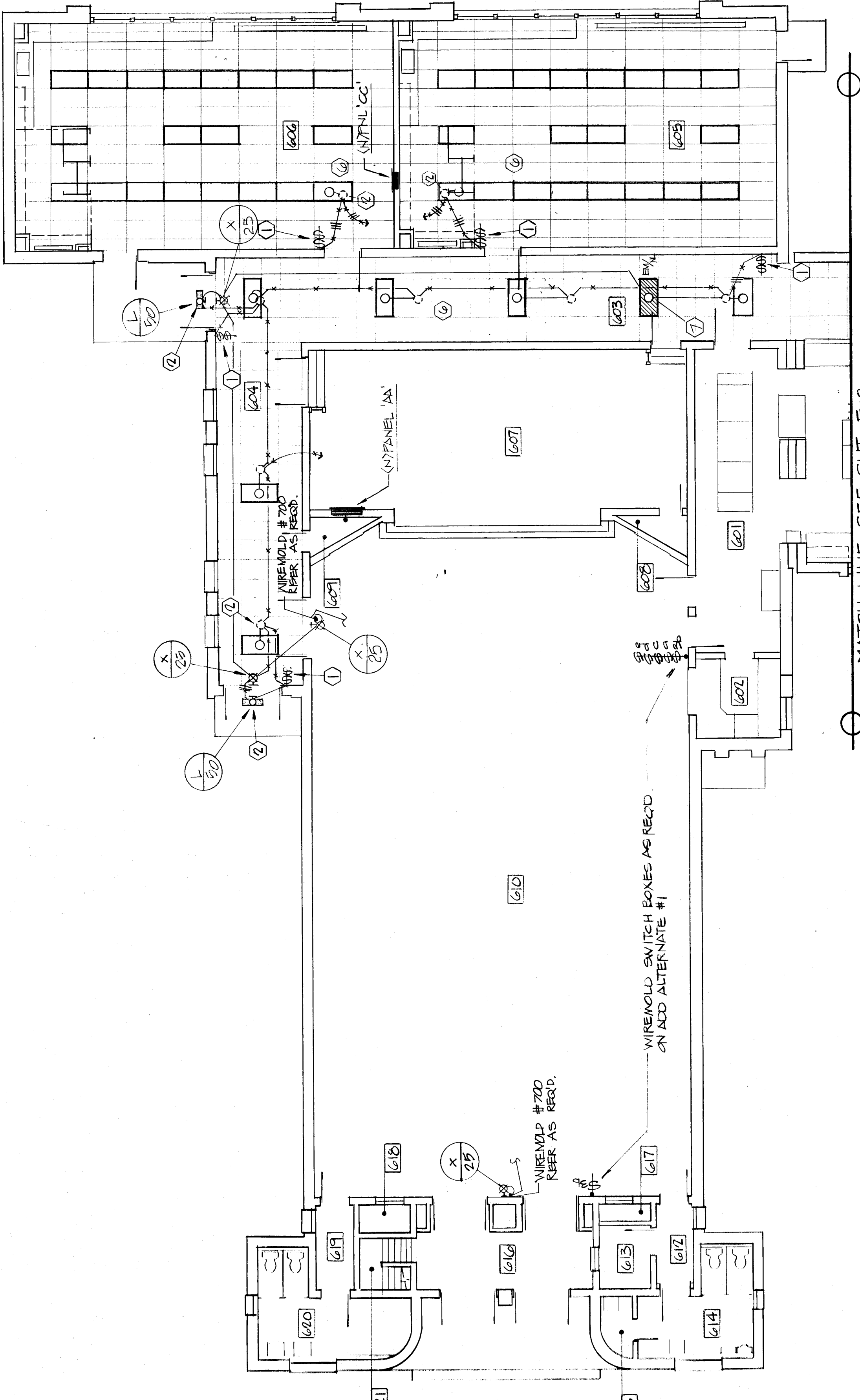
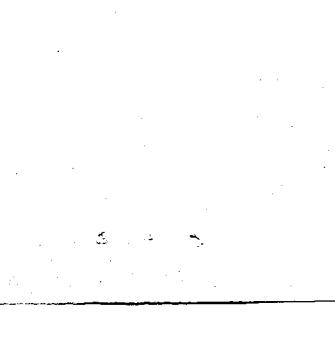
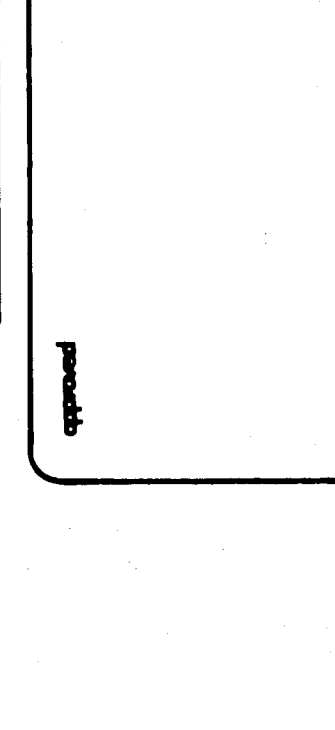
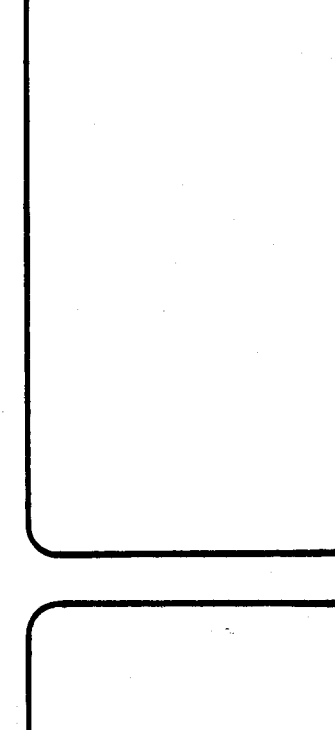
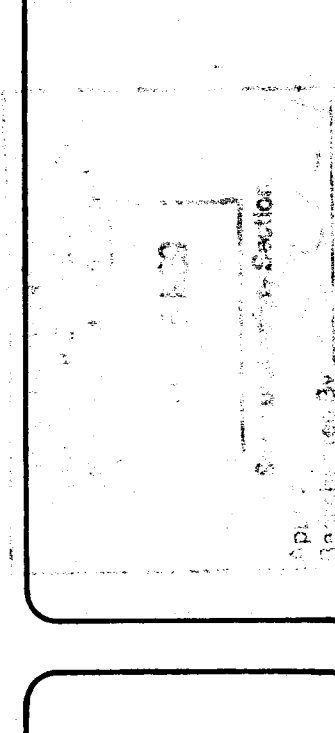
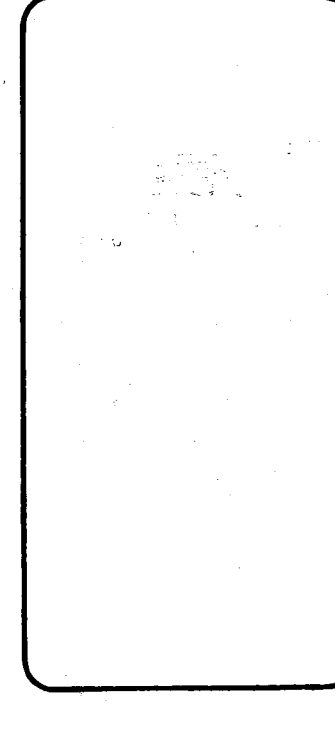


DATE: 07/1/87
 DRAWN: JEP/87

LIGHTING FLOOR PLAN - BLDGS 600/700 & UG. DIAGRAM
HORACE MANN MODERNIZATION
 BAKERSFIELD CITY SCHOOL DISTRICT
 2710 NILES AVENUE
 BAKERSFIELD, CALIFORNIA 93307

C. 3132
 C. 3289
 C. 6584
 C. 8021
 C. 8702
 © copyrighted 1987
DR. GAZMAL
 bfgc inc.
 architects - planners
 31 SOUTH OAK ROAD BOX 9828
 BAKERSFIELD CALIFORNIA 93309
 805 832 8122

INTERNATIONAL PROJECTS BY
INTERSTATE ENGINEERING, INC.
 1010 N. G STREET, SUITE 100, BAKERSFIELD, CA 93304



BUILDING 600

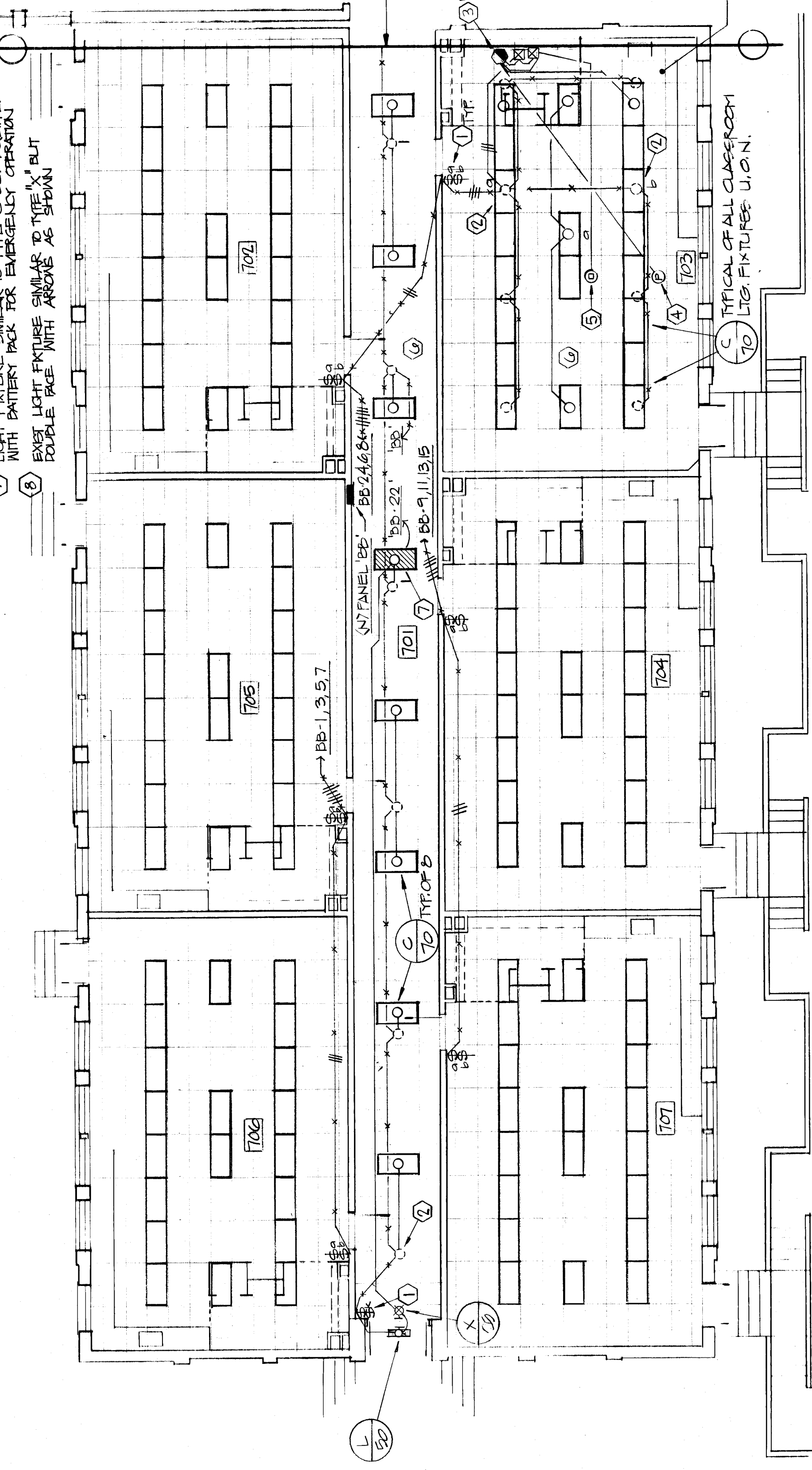
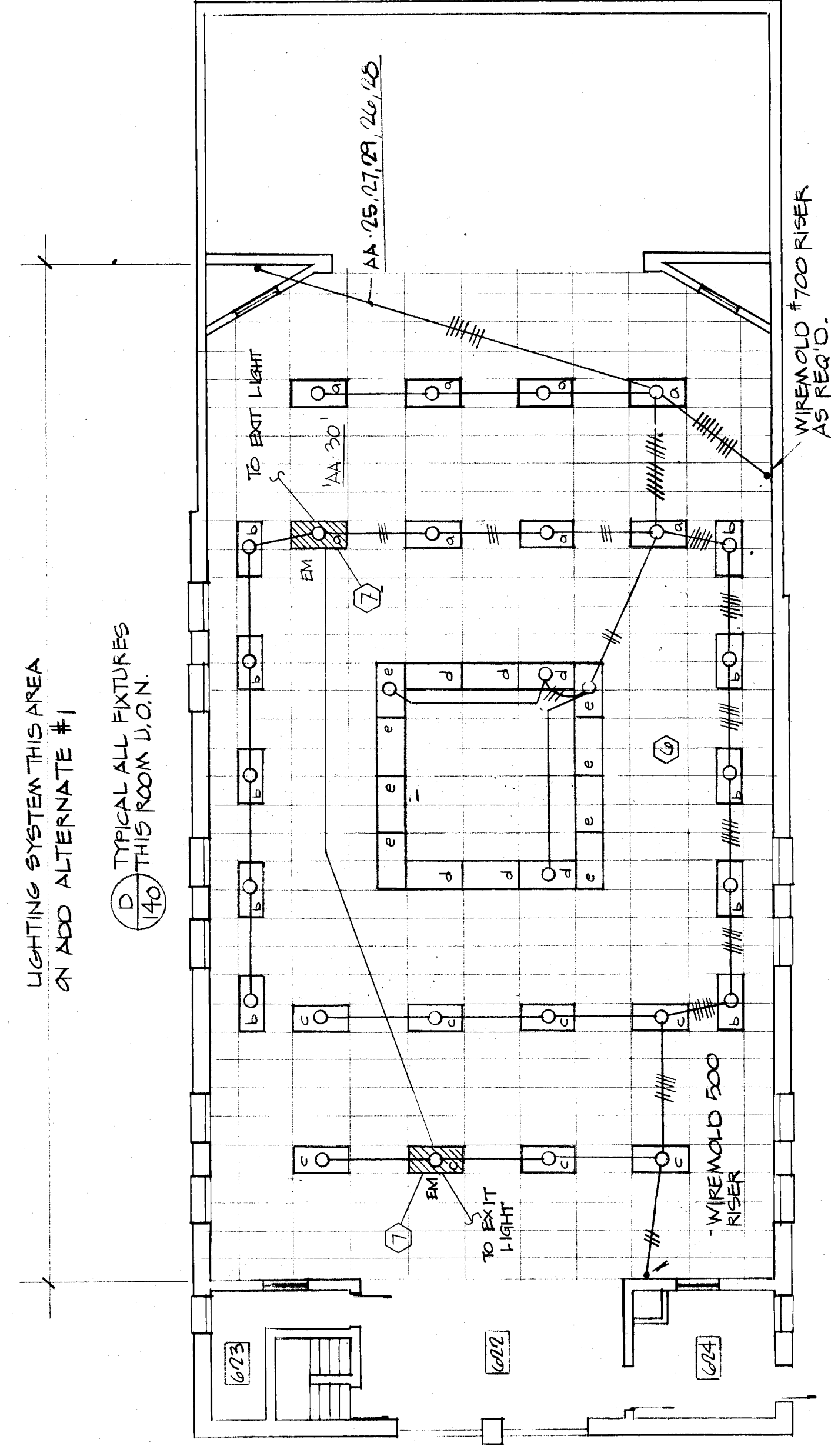
NOTE: REFER TO ARCH REFLECTED CEILING PLAN FOR EXACT LOCATION OF LIGHT FIXTURES TYPICAL - ALL ROOMS

- REFERENCE NOTES (THIS SHEET ONLY):
1. REPLACE EXISTING WALL SWITCHES AND PLATE.
 2. CONNECT NEW FIXTURES TO EXISTING CIRCUITS.
 3. AUTOMATIC TUNING CONTROL MOUNTED ABOVE CEILING IN ACCESSIBLE AREA - SEE WIRING DIAGRAM ON SHEET E-4.
 4. PHOTOELECTRIC CELL MOUNTED ON CEILING MINIMUM 10" AWAY FROM NEAREST WINDOW - SEE WIRING DIAGRAM ON SHEET E-4.
 5. MOTION SENSOR MOUNTED ON CEILING APPROXIMATELY IN CENTER OF ROOM - SEE WIRING DIAGRAM ON SHEET E-4.
 6. REMOVE ALL EXISTING LIGHT FIXTURES IN CLASSROOMS AND CORRIDORS COORDINATE WITH NOTE 7.
 7. LIGHT FIXTURES SHALL BE TYPE 141 BUT EQUIPPED WITH DIMMER PAKS FOR ENERGY EFFICIENT OPERATION.
 8. DOUBLE END SWITCHESS TO BE REMOVED BUT DOUBLE END SWITCHESS TO BE REMOVED.

BUILDING 600
SECOND FLOOR

LIGHTING SYSTEM THIS AREA ON ADD ALTERNATE #1

(D) TYPICAL ALL FIXTURES (H) THIS ROOM U.O.N.

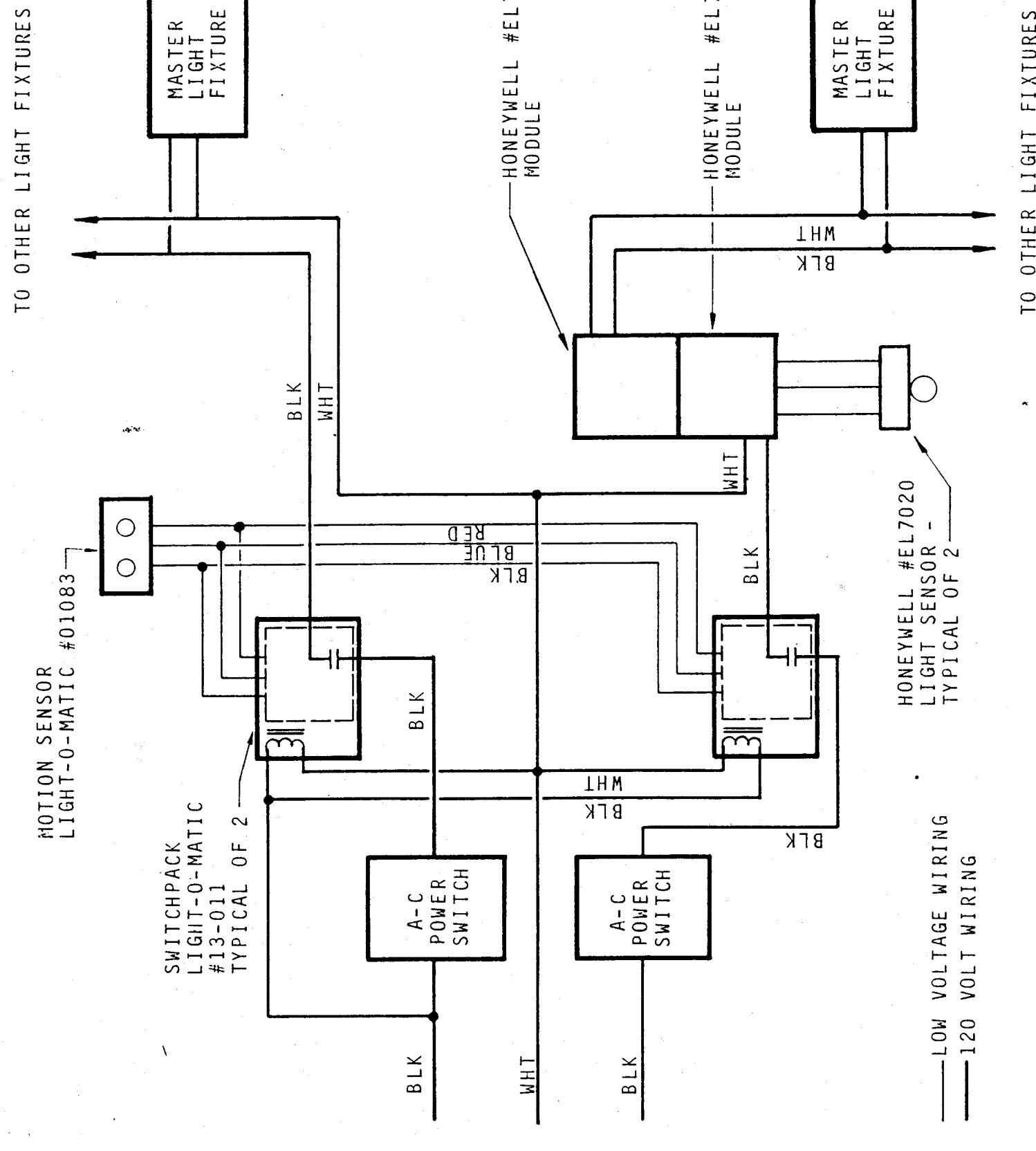


BUILDING 700

FLOOR PLANS - LIGHTING

1/8" = 1'-0"

TYPICAL LIG. WORK FOR CLASSROOMS # 702, 704, 705, 706, 707, LIBRARY 605 AND TEACHERS LOUNGE 606



CLASSROOM LIGHTING CONTROL DIAGRAM
 N.T.S.

- NOTES - CLASSROOM LIGHTING CONTROL:
1. ALL LAMPS TO BE STANDARD COOL WHITE.
 2. ALL BALLASTS TO BE ENERGY SAVINGS.
 3. ALL MOTION SENSORS TO BE FIELD ADJUSTED DURING DAY AND NIGHT.
 4. DIMMING SYSTEM TO INCLUDE A FIVE YEAR WARRANTY IN WRITING BY MANUFACTURER.
 5. LIGHT SENSORS TO BE ADJUSTED DURING THE DAY.
 6. PRIOR TO INSTALLATION OF LIGHTING CONTROLS, A FACTORY REPRESENTATIVE IS REQUIRED TO VERIFY ALL WIRING AND INSTALLATION REQUIREMENTS.
 7. A FACTORY REPRESENTATIVE FOR THE DIMMING SYSTEM SHALL BE PRESENT FOR THE FINAL PROJECT SYSTEM OPERATION PRIOR TO FINAL PROJECT ACCEPTANCE AND SHALL, IN WRITING, CERTIFY SYSTEM IS PROPERLY INSTALLED. THE DIMMING SYSTEM SHALL BE INSTALLED IN ACCORDANCE WITH THE MANUFACTURER'S RECOMMENDATIONS. THIS REVIEW IS TO BE DONE IN THE PRESENCE OF THE PROJECT INSPECTOR.

approved