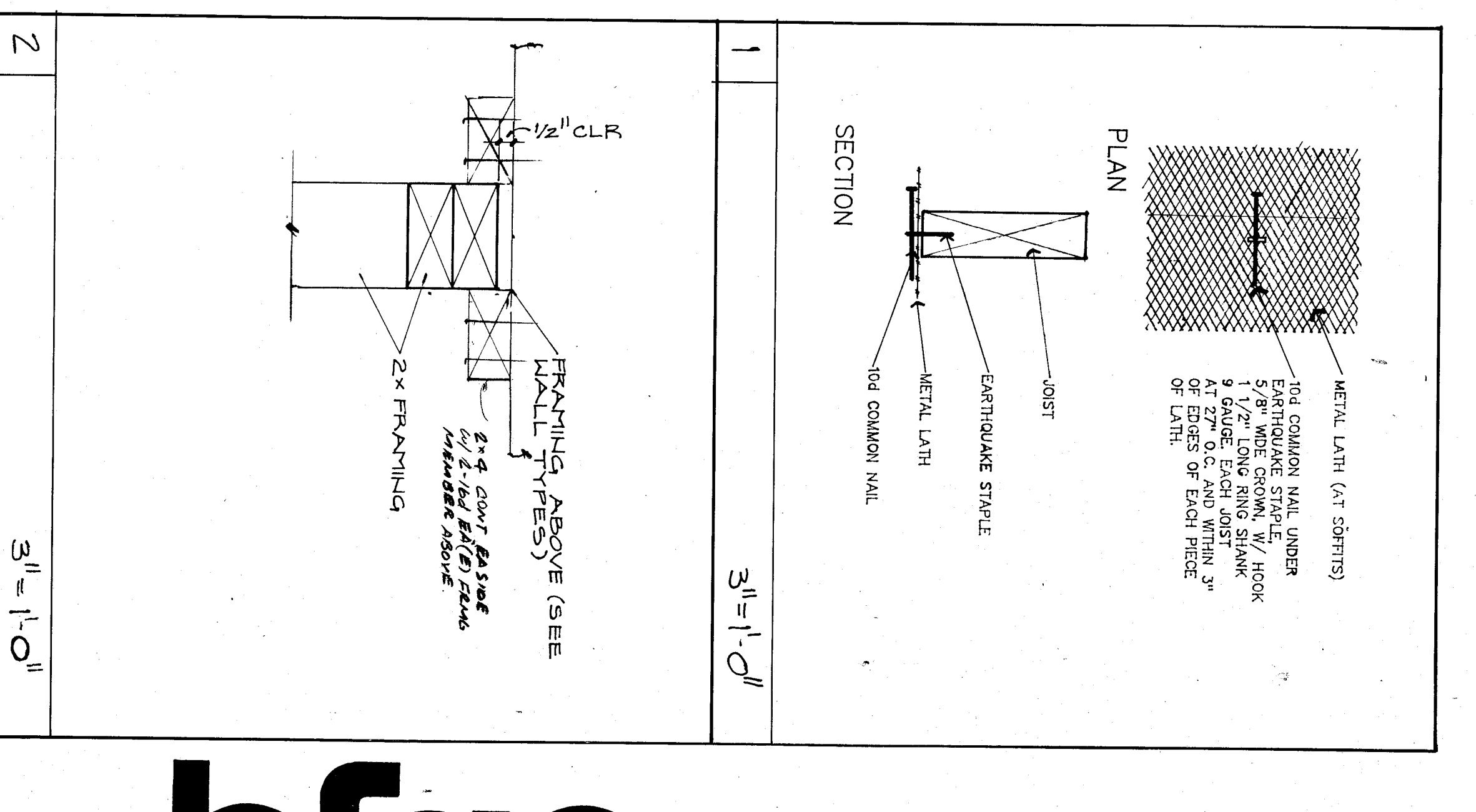
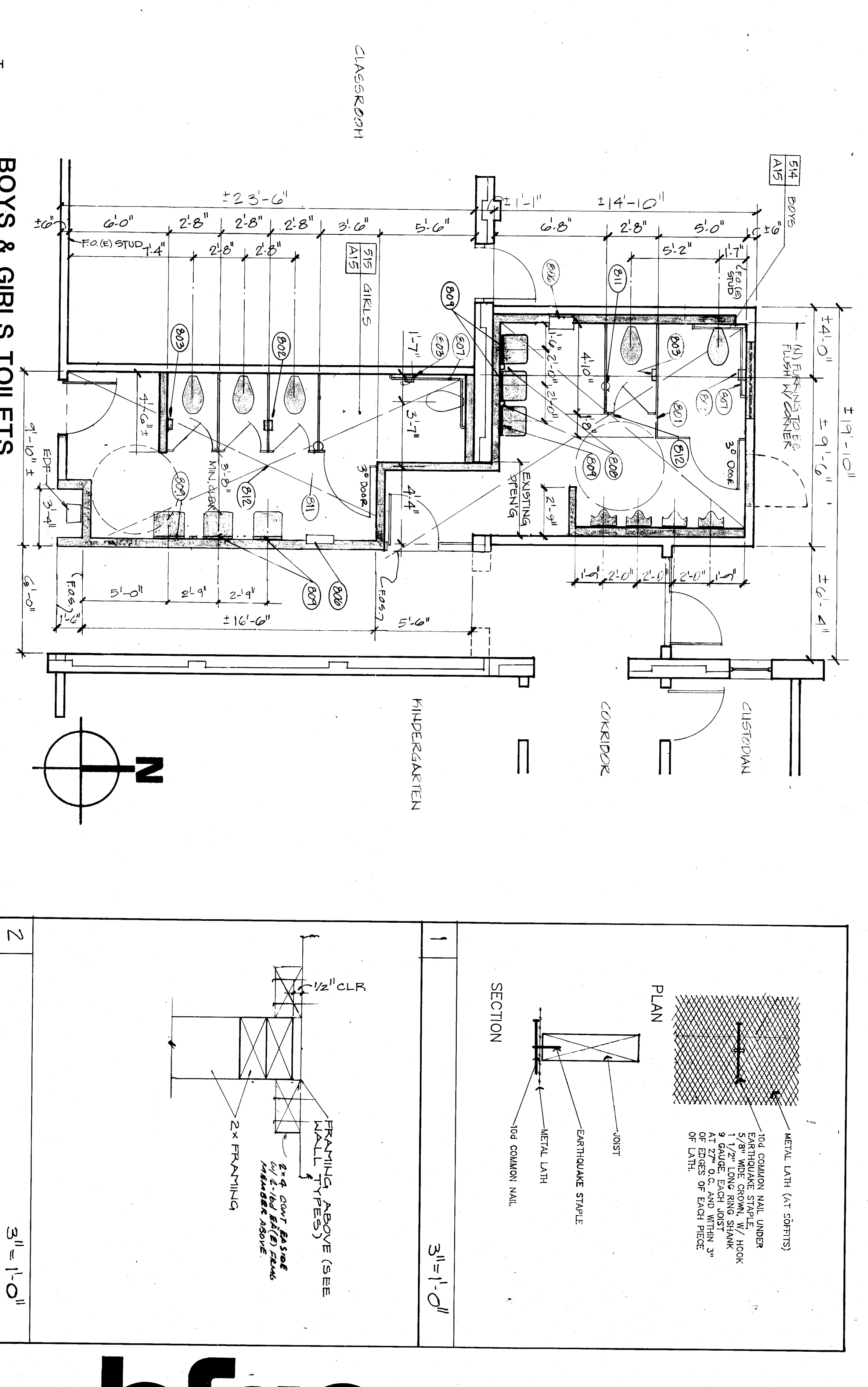
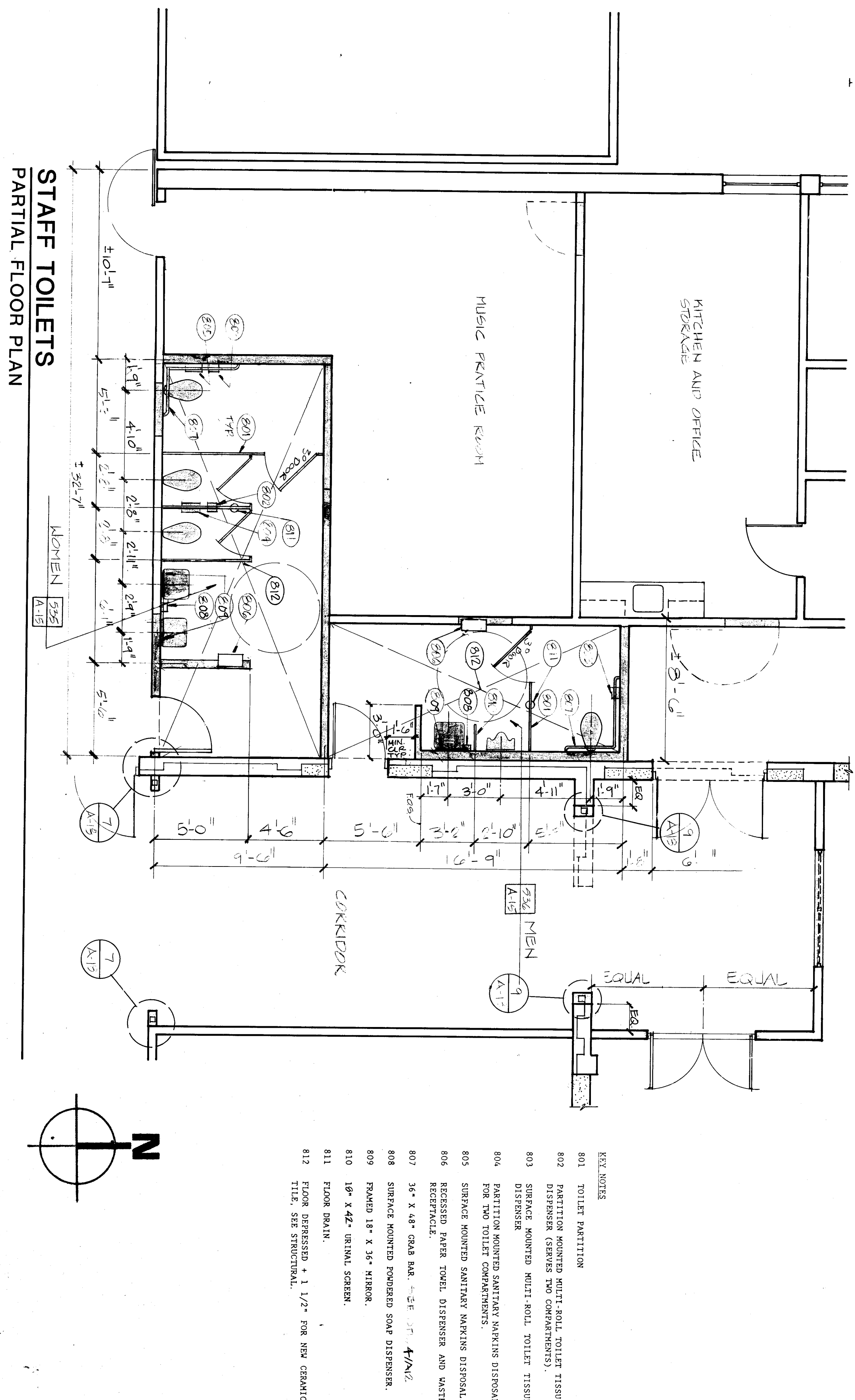
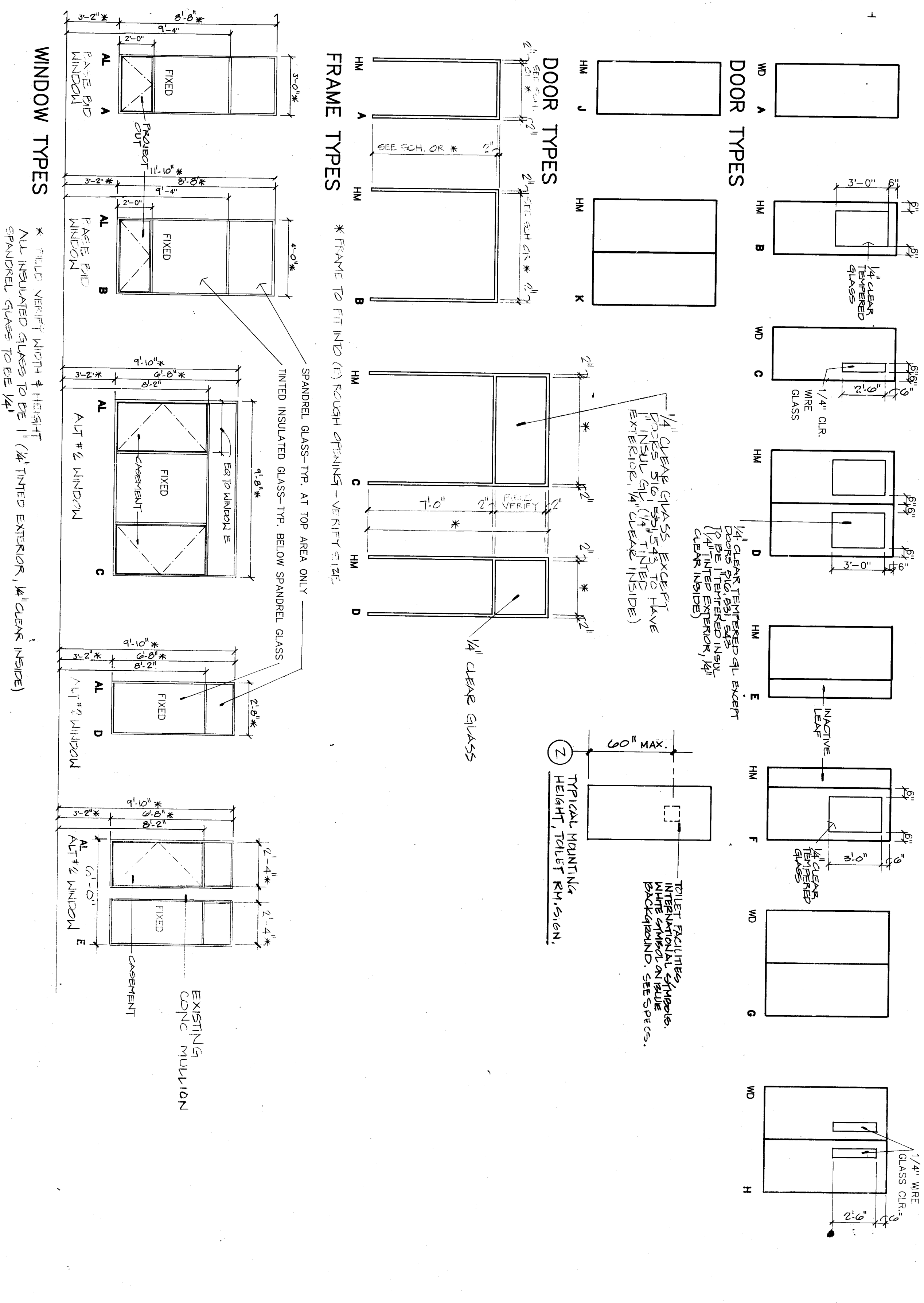


DOOR AND FRAME SCHEDULE

DOOR NUMBER	DOOR			FRAME			PERIOD	HARDWARE SET	REMARKS
	TYPE	SIZE	LOUVER	TYPE	DETAILS	SET			
	BACK SILLING	H	W	W	LEFT JAMB	HEAD	RIGHT JAMB		NOTE: FOR GENERAL NOTES, SEE SHEET A-7
628								25	
629								25	
701	F	3'-0" ±	7'-0" ±		B	20/A-17	20/A-17	20 MIN.	KEYNOTE A
702	C	3'-4" ±	7'-0" ±		B	20/A-17	20/A-17	20 MIN.	KEYNOTE B
703	C	3'-4" ±	7'-0" ±		B	20/A-17	20/A-17	20 MIN.	KEYNOTE B
704	E	3'-0" ±	7'-0" ±		B	20/A-17	20/A-17	20 MIN.	KEYNOTE A
705	E	3'-0" ±	7'-0" ±		B	20/A-17	20/A-17	20 MIN.	KEYNOTE A
706	C	3'-4" ±	7'-0" ±		B	20/A-17	20/A-17	20 MIN.	KEYNOTE B
707	F	3'-0" ±	7'-0" ±		B	20/A-17	20/A-17	20 MIN.	KEYNOTE B
708	C	3'-4" ±	7'-0" ±		B	20/A-17	20/A-17	20 MIN.	KEYNOTE B
709	F	3'-0" ±	7'-0" ±		B	20/A-17	20/A-17	20 MIN.	KEYNOTE A
710	C	3'-4" ±	7'-0" ±		B	20/A-17	20/A-17	20 MIN.	KEYNOTE B
711	C	3'-4" ±	7'-0" ±		B	20/A-17	20/A-17	20 MIN.	KEYNOTE B
712	E	3'-0" ±	7'-0" ±		B	20/A-17	20/A-17	20 MIN.	KEYNOTE A
713	D	3'-0" ±	7'-0" ±		C			20 MIN.	KEYNOTE A
801	K	5'-0" ±	7'-0" ±		B	8/A-17	8/A-17	20 MIN.	KEYNOTE A
801	L	3'-0" ±	7'-0" ±		B	3/A-12	3/A-12	1/2 Hk	KEYNOTE B
802	K	3'-0" ±	7'-0" ±		B	3/A-12	3/A-12	1/2 Hk	KEYNOTE B
803	K	3'-0" ±	7'-0" ±		B	3/A-12	3/A-12	1/2 Hk	KEYNOTE B
804	K	3'-0" ±	7'-0" ±		B	3/A-12	3/A-12	1/2 Hk	KEYNOTE B
805	K	3'-0" ±	7'-0" ±		B	3/A-12	3/A-12	1/2 Hk	KEYNOTE B
806	K	3'-0" ±	7'-0" ±		B	3/A-12	3/A-12	1/2 Hk	KEYNOTE B
807	K	3'-0" ±	7'-0" ±		B	3/A-12	3/A-12	1/2 Hk	KEYNOTE B
808	K	3'-0" ±	7'-0" ±		B	3/A-12	3/A-12	1/2 Hk	KEYNOTE B
809	K	3'-0" ±	7'-0" ±		B	3/A-12	3/A-12	1/2 Hk	KEYNOTE B
810	K	3'-0" ±	7'-0" ±		B	3/A-12	3/A-12	1/2 Hk	KEYNOTE B
811	K	3'-0" ±	7'-0" ±		B	3/A-12	3/A-12	1/2 Hk	KEYNOTE B
812	K	3'-0" ±	7'-0" ±		B	3/A-12	3/A-12	1/2 Hk	KEYNOTE B



DR. ARTW

DR. ARTW

DR. ARTW

DR. ARTW

DR. ARTW

DR. ARTW

DR. ARTW

DR. ARTW

DR. ARTW

DR. ARTW

DR. ARTW

DR. ARTW

DR. ARTW

DR. ARTW

DR. ARTW

DR. ARTW