

ROOM FINISH SCHEDULE

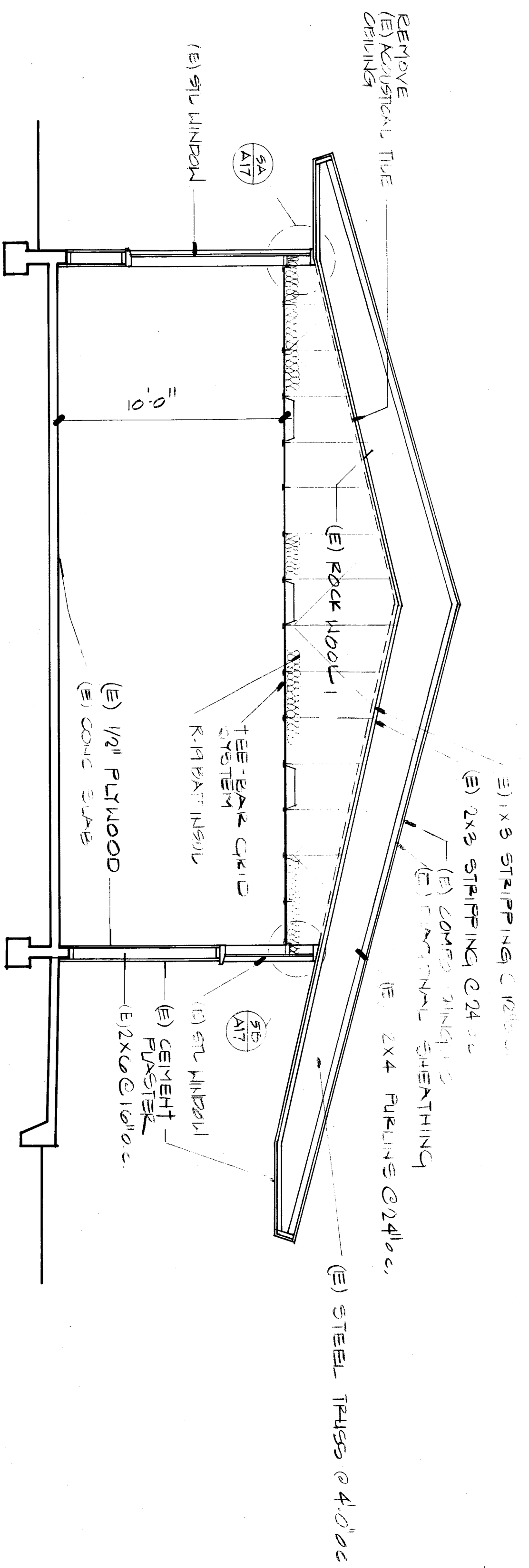
NUMBER	NAME	FLOOR		BASE		NORTH WALL		EAST WALL		SOUTH WALL		WEST WALL		CEILING		NOTES	REMARKS	NUMBER
		MAT	FIN	MAT	FIN	MAT	FIN	MAT	FIN	MAT	FIN	MAT	FIN	HT	MAT			
623	UTILITY ROOM																NO WORK	623
701	CORRIDOR	C	INTG	INTG	INTG									9'-8" T&T	INTG	* APPROVE #195 SEE NOTE A & B/A/C		701
702	CLASSROOM	C	INTG	INTG	INTG									9'-8" T&T	INTG	SEE NOTE A & B/A/C * ALT #1A		702
703	CLASSROOM	C	INTG	INTG	INTG									9'-8" T&T	INTG	SEE NOTE A & B/A/C		703
704	CLASSROOM	C	INTG	INTG	INTG									9'-8" T&T	INTG	SEE NOTE A & B/A/C		704
705	CLASSROOM	C	INTG	INTG	INTG									9'-8" T&T	INTG	SEE NOTE A & B/A/C		705
706	CLASSROOM	C	INTG	INTG	INTG									9'-8" T&T	INTG	SEE NOTE A & B/A/C * ALT #1A		706
707	CLASSROOM	C	INTG	INTG	INTG									9'-8" T&T	INTG	SEE NOTE A & B/A/C		707
708																		708
709																		709
710																		710
711																		711
712																		712
713																		713

GENERAL PAINTING NOTES

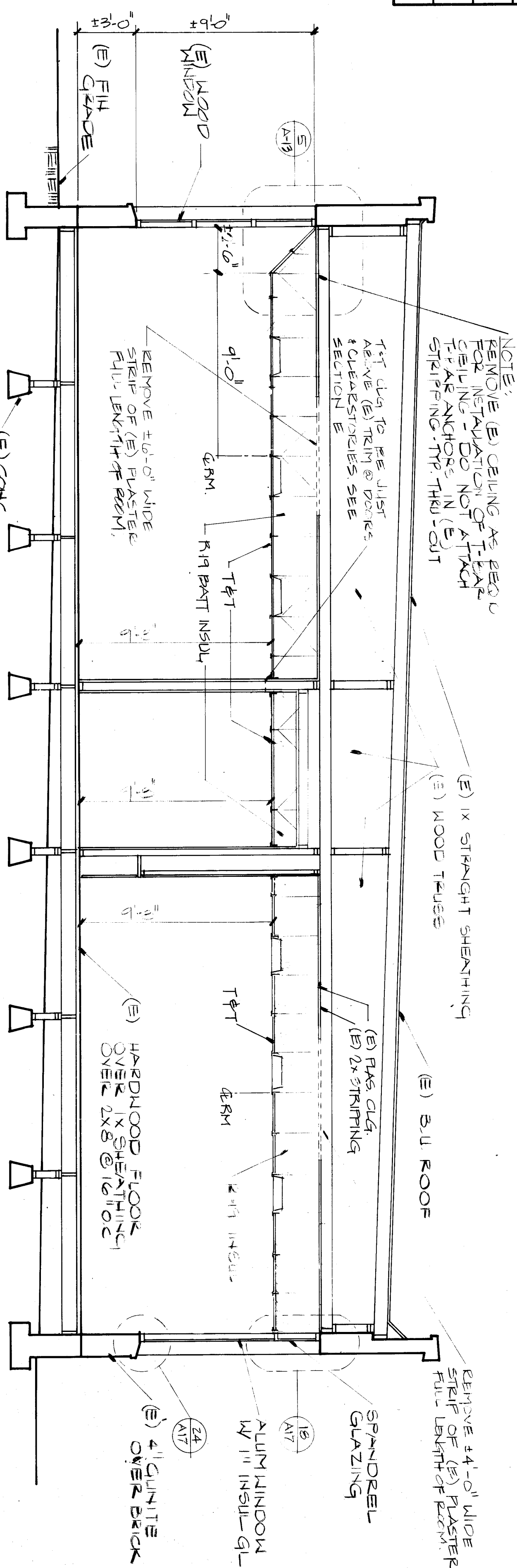
- Paint new doors in new frames with epoxy primer and paint.
- Paint new doors in existing frames with epoxy primer and paint.
- Paint existing doors and frames (including trim with enamel) if AIT #1A is accepted.

KEY FINISH NOTES

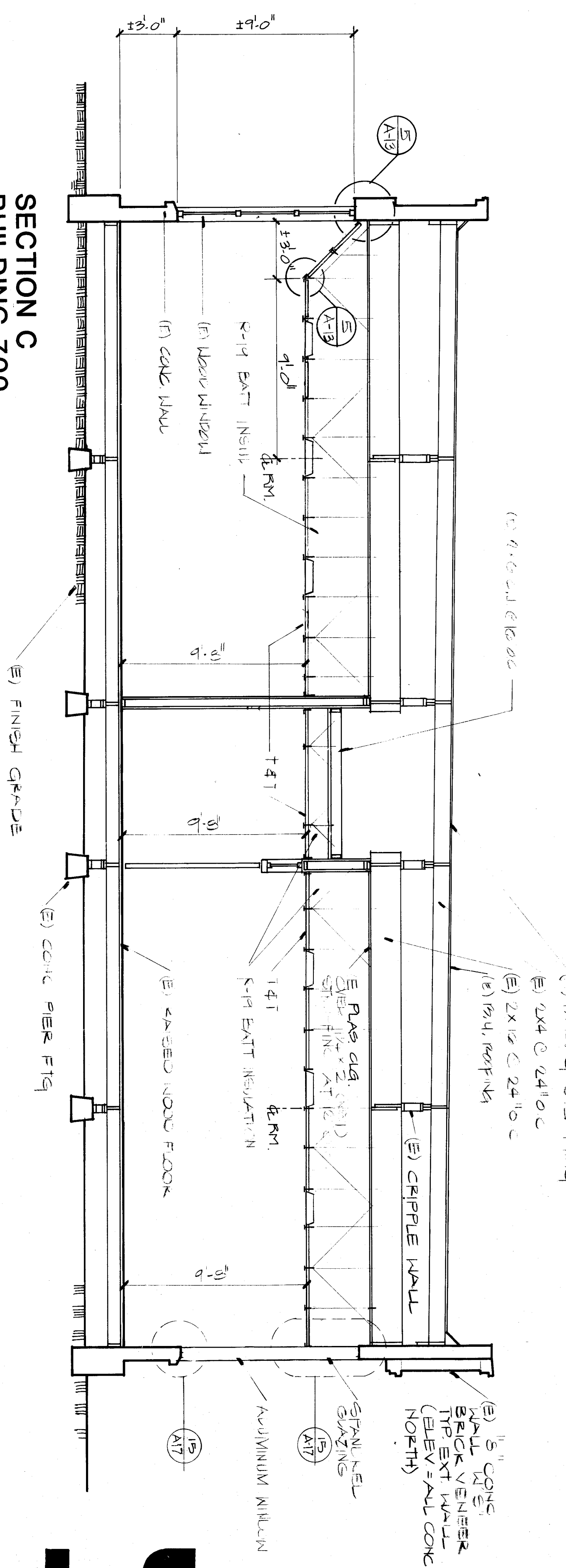
- Painting of this room is not included in the Finish Schedule 2) a new item has been included in the existing schedule. See General Painting Notes and Schedule 2) for details.
- Paint the existing wood base with enamel.
- Paint the door, window and trim with enamel.
- Paint the door, window and trim with enamel. See Detail 3 Sheet A17 with enamel.
- Paint the door, window and trim with enamel.
- Paint the door, window and trim with enamel.
- Paint the door, window and trim with enamel.
- Paint the door, window and trim with enamel.



SECTION A
BUILDING 100, 200, 300, 400



SECTION B
BUILDING 500



SECTION C
BUILDING 700

