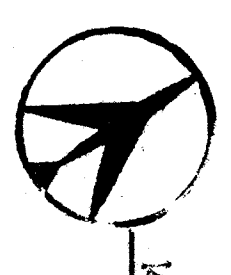
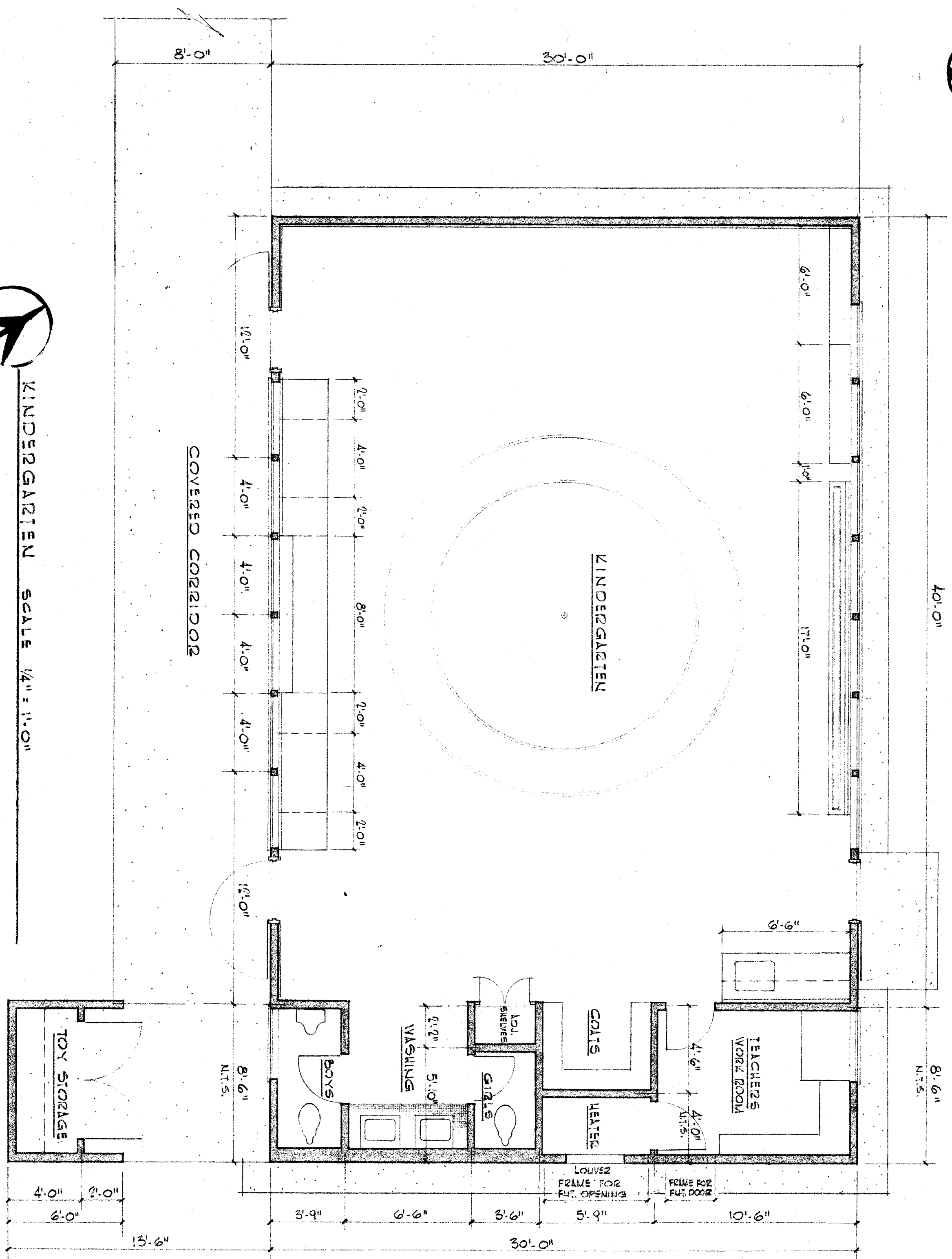
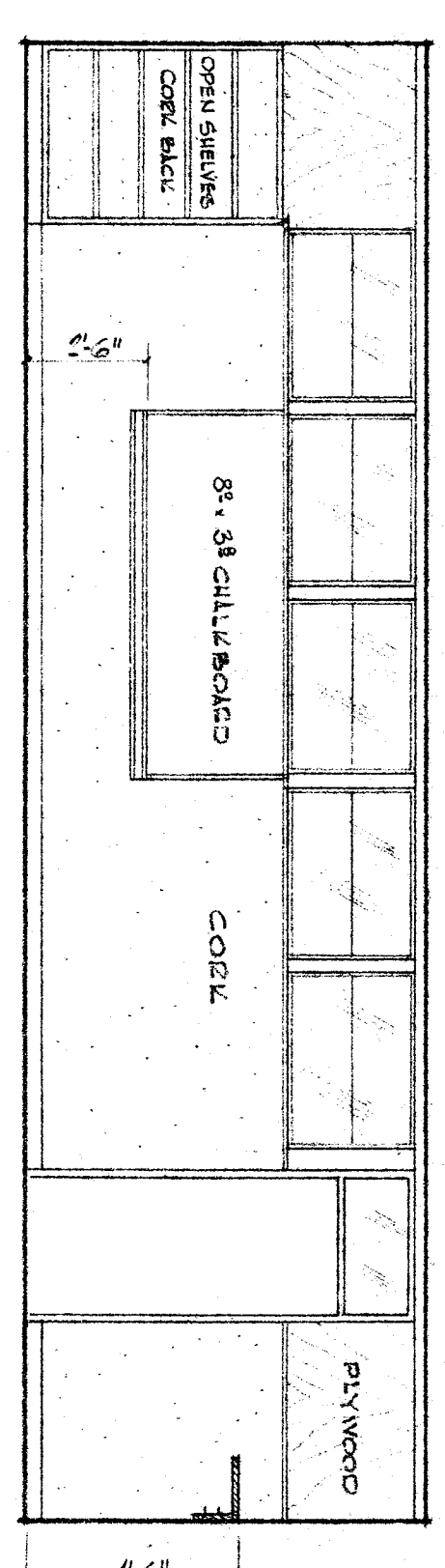
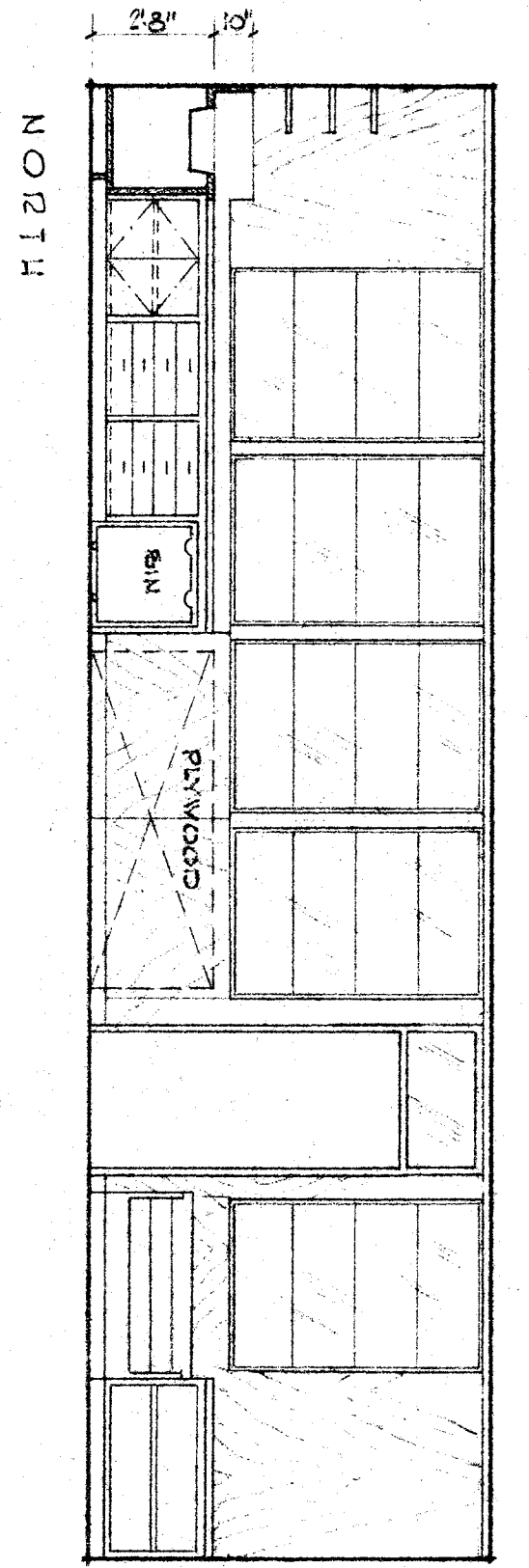


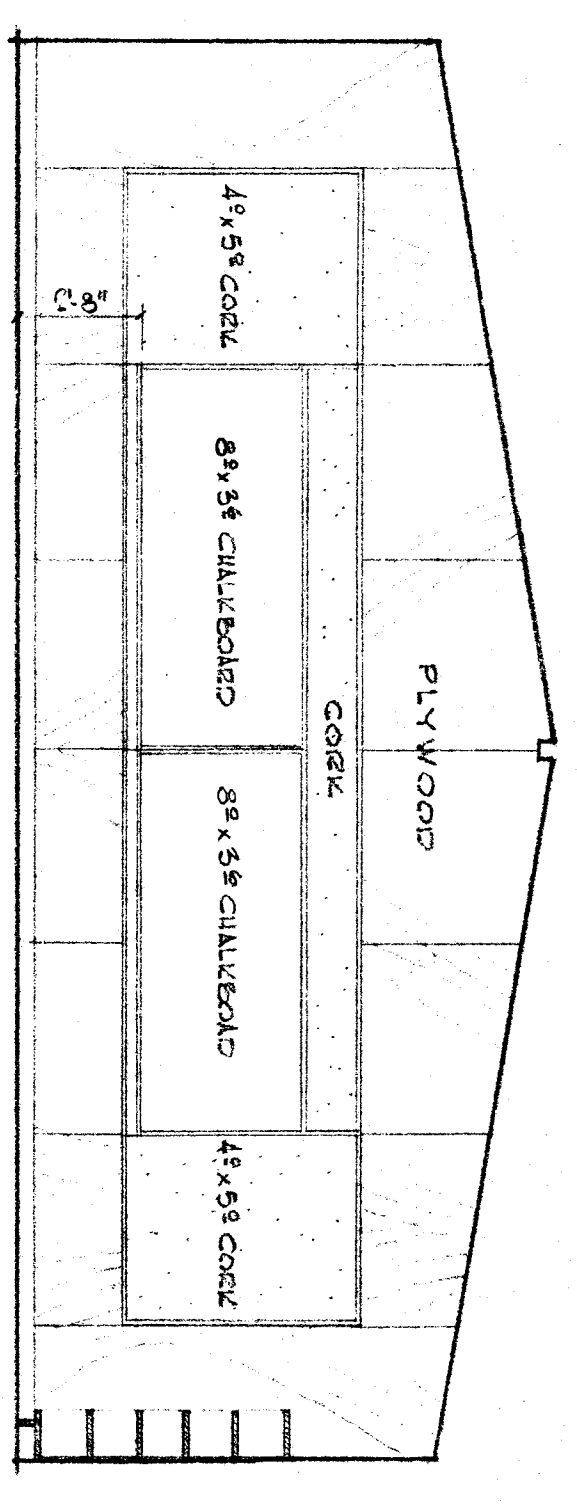
TYPICAL CLASSROOM SCALE 1/4" = 1'-0"



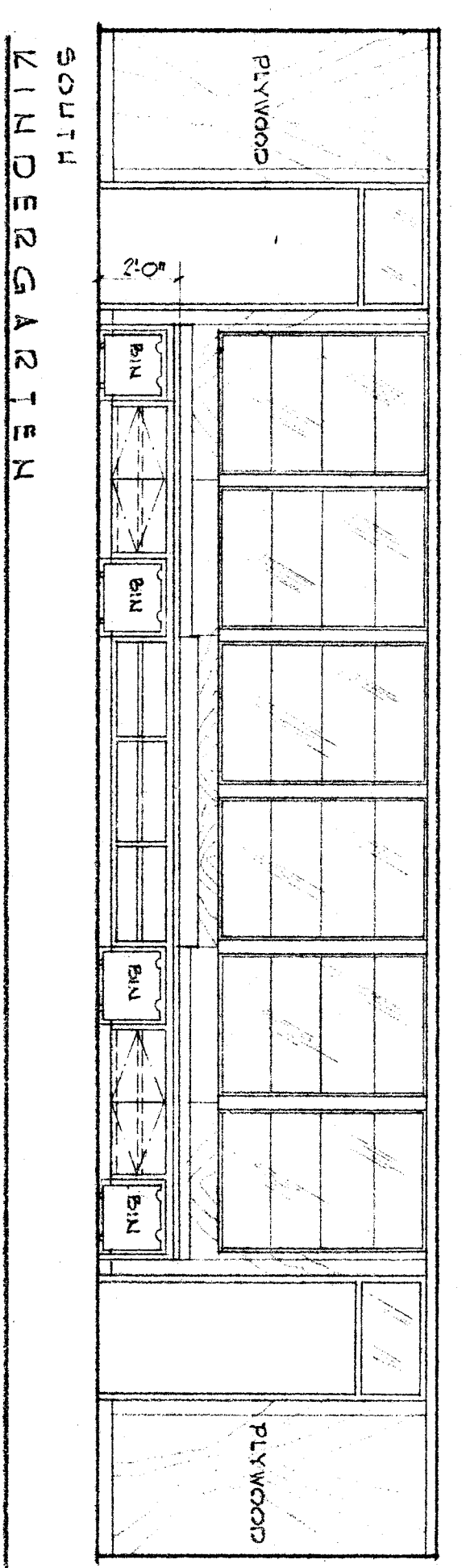
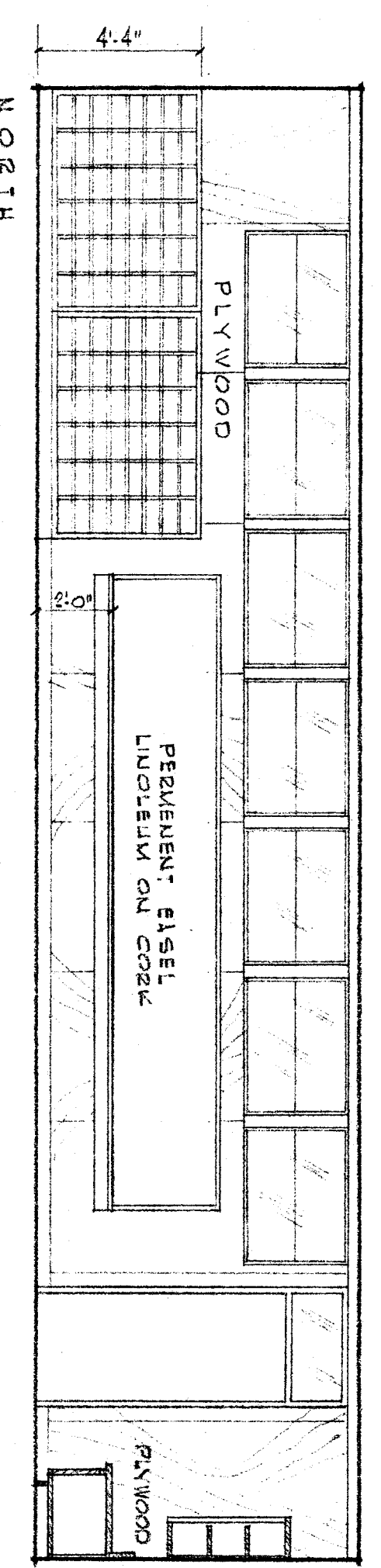
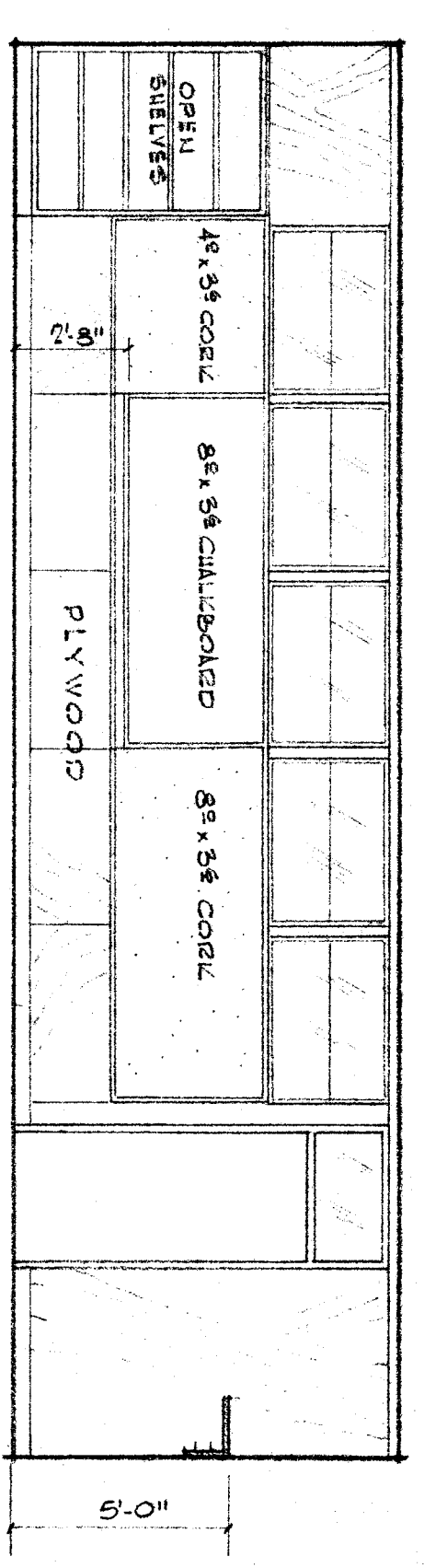
KINDERGARTEN SCALE 1/4" = 1'-0"



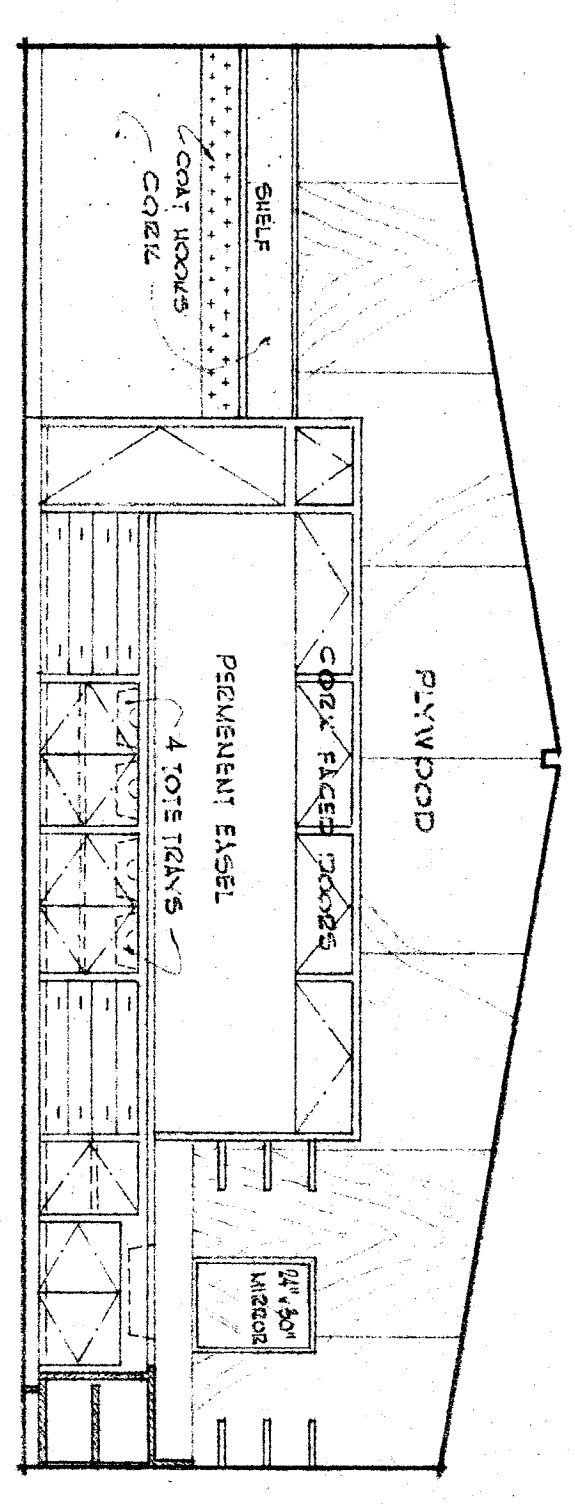
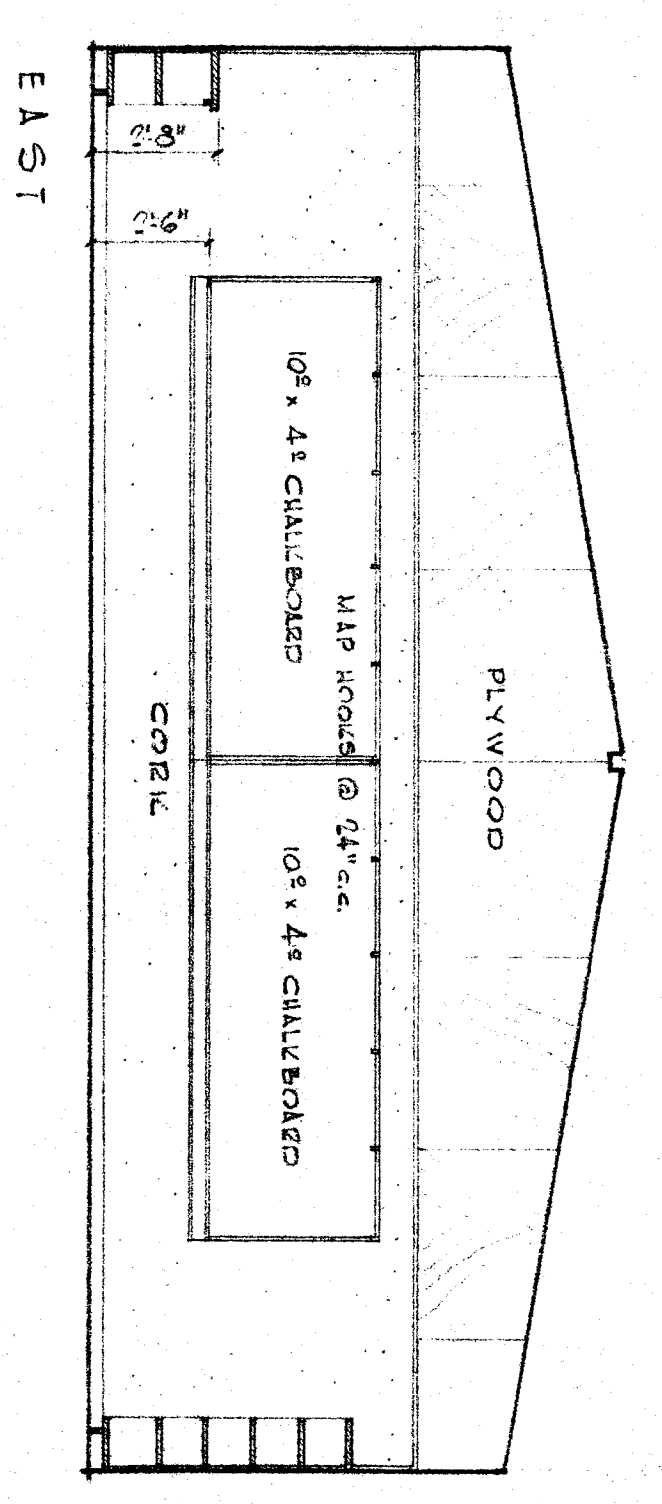
PRIMARY CLASSROOM



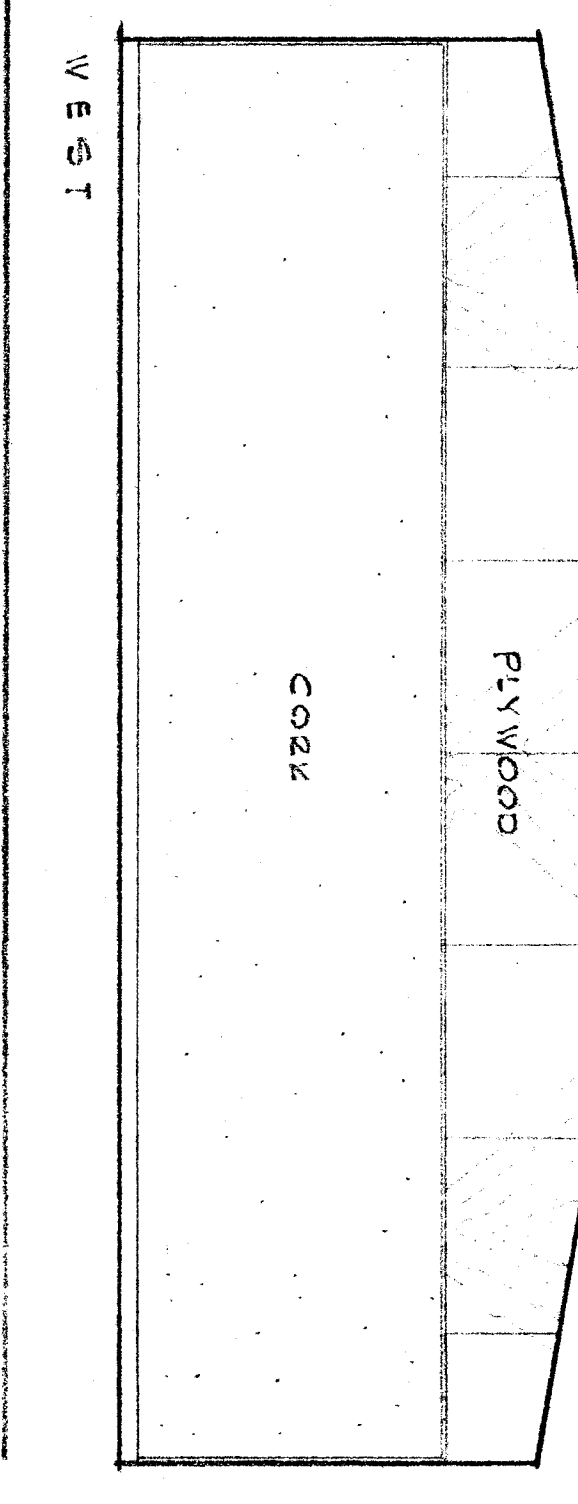
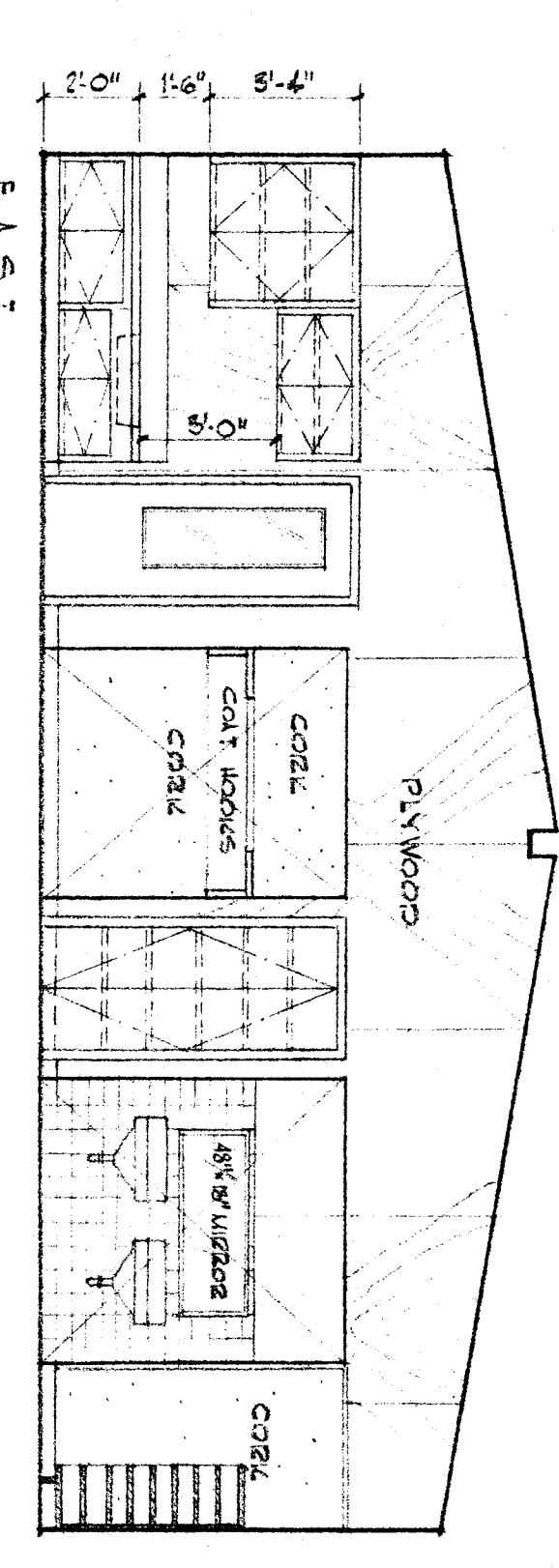
INTERMEDIATE CLASSROOM NORTH & WEST SLOPE IS PRIMARY CLASSROOM



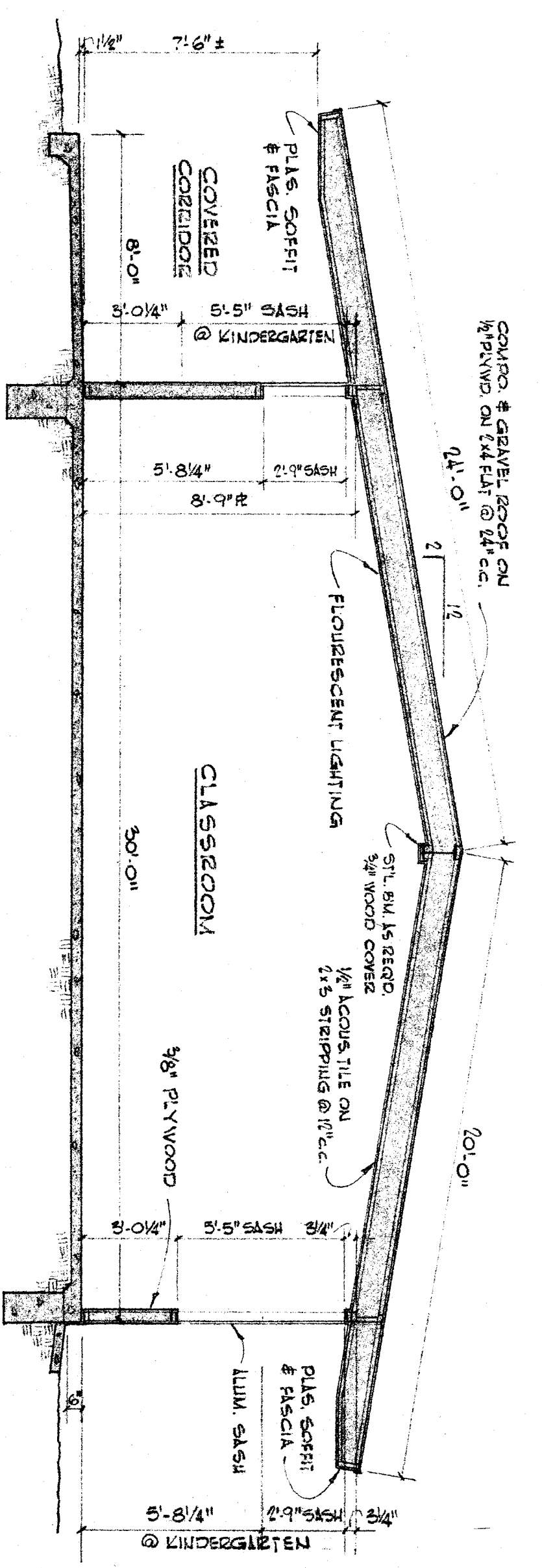
KINDERGARTEN



WEST



WEST



SECTION SCALE 1/4" = 1'-0"

CHECK AND VERIFY ALL DIMENSIONS BEFORE PROCEEDING WITH THE WORK. REPORT ANY DISCREPANCIES TO THE ARCHITECT		BAVERSFIELD CITY SCHOOL DISTRICT APPROVED		JOB NO. 5814		DRAWN: D.S.		CHECKED:		DATE:	
		BOARD OF EDUCATION		AMERICAN INSTITUTE OF ARCHITECTS		Sabin and Fields		ARCHITECTS		TYPICAL CLASSROOM & KINDERGARTEN PLANS, INTERIOR ELEVATIONS AND SECTION	
								844 TRINITY AVENUE		PROPOSED NEW SCHOOL SECTION 55	
								BAVERSFIELD, CALIFORNIA		BAVERSFIELD CITY SCHOOL DISTRICT	
								FAYRETT, 19187		BAVERSFIELD	
								C1810		VERB COUNTY CALIFORNIA	
								C589		5	