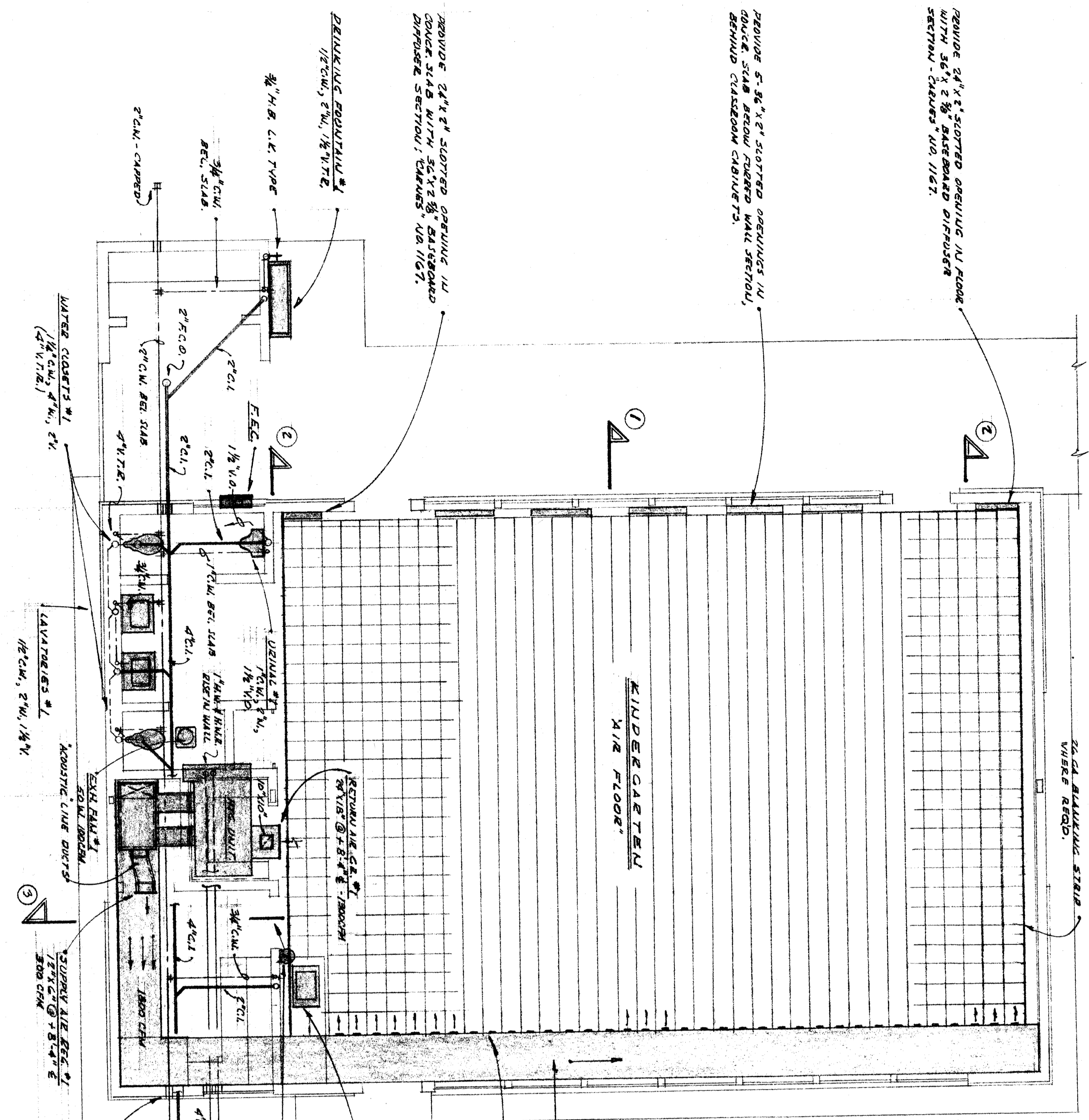


REMOVE 2 1/2" x 8" SLOTTED JOISTS IN ROOM
REMOVE 2 1/2" x 8" SLOTTED JOISTS IN ROOM
RETRAIL - SHOWN IN 1/2" SECTION

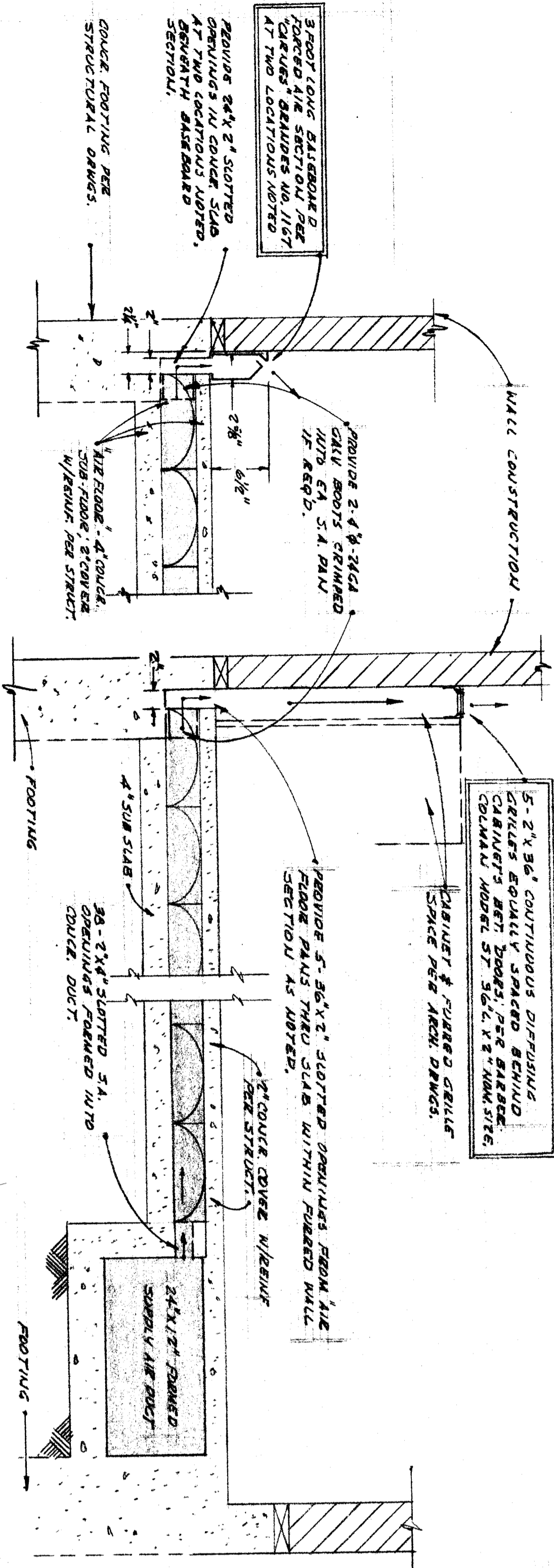
REMOVE 2 1/2" x 8" SLOTTED JOISTS IN
ROOM FROM ROOM CHANGES
REMOVE 2 1/2" x 8" SLOTTED JOISTS

REMOVE 2 1/2" x 8" SLOTTED JOISTS IN
ROOM FROM ROOM CHANGES
REMOVE 2 1/2" x 8" SLOTTED JOISTS

REMOVE 2 1/2" x 8" SLOTTED JOISTS IN
ROOM FROM ROOM CHANGES
REMOVE 2 1/2" x 8" SLOTTED JOISTS



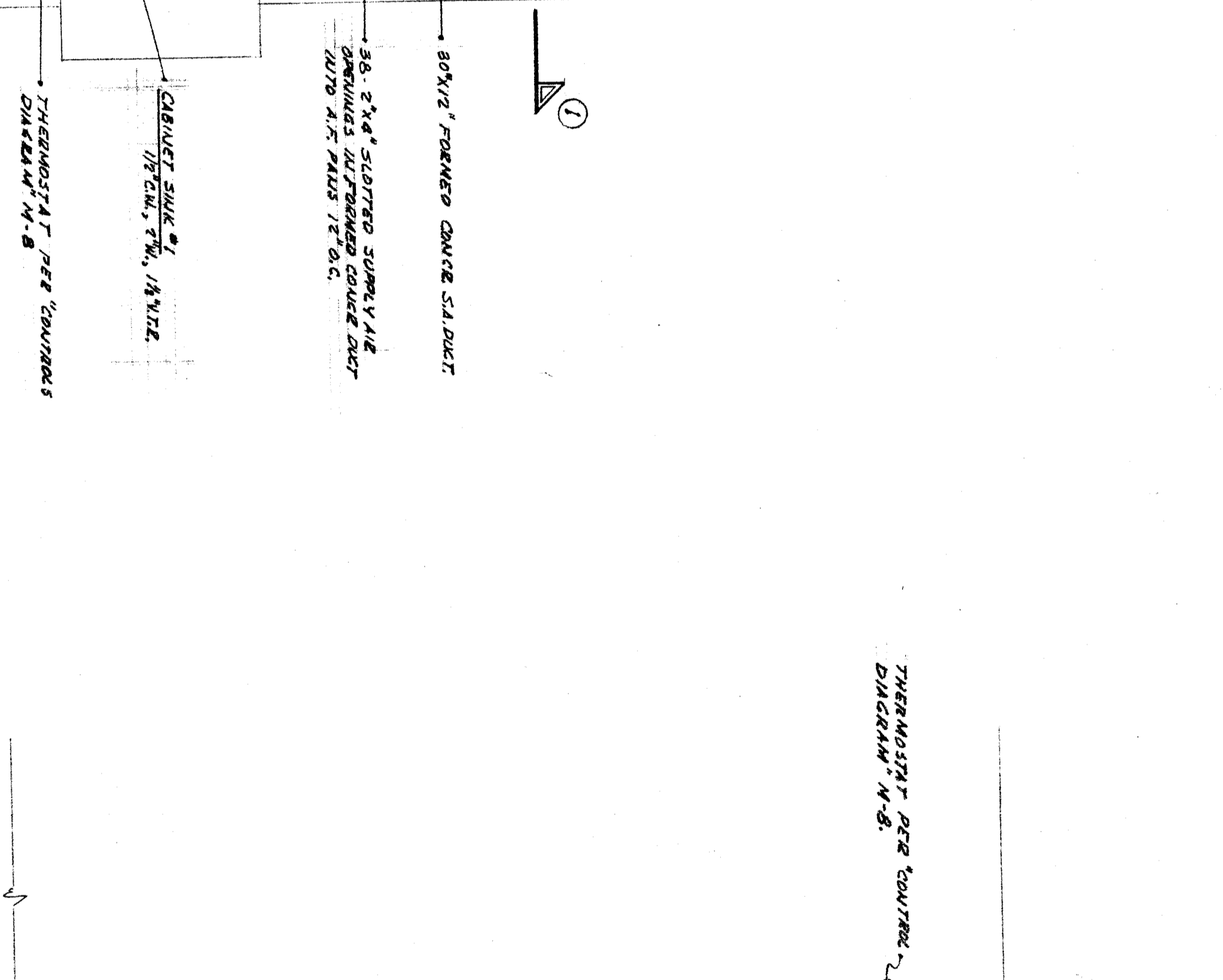
MECHANICAL PLAN - KINDERGARTEN UNIT A
SCALE: 1/8" = 1'-0"



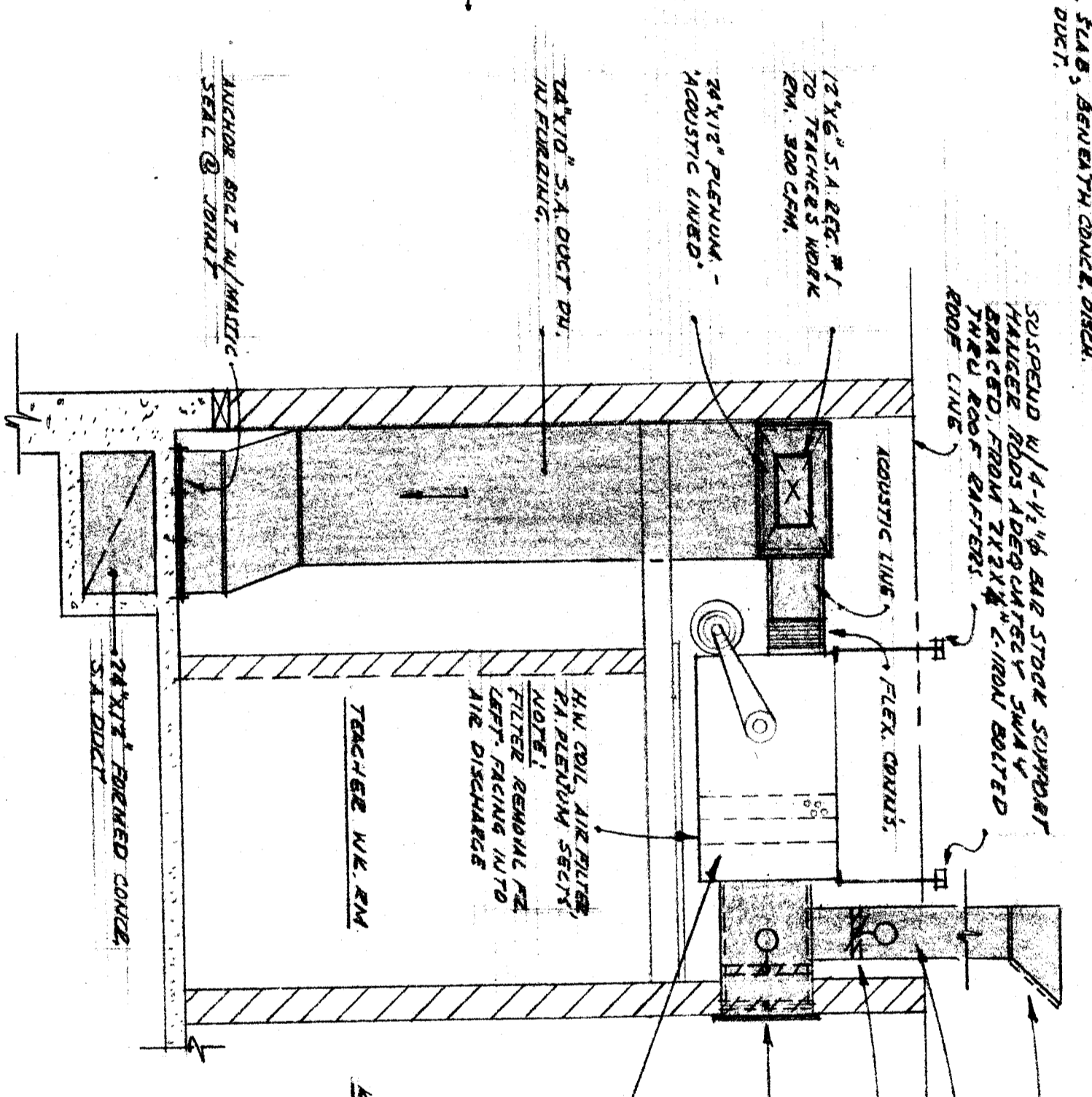
SECTION 1 1/8" = 1'-0"

SECTION 2 1/8" = 1'-0"

MECHANICAL DETAILS FOR KINDERGARTEN AND CLASSROOM 5 - UNITS A,B,C



MECHANICAL PLAN - TYPICAL CLASSROOM UNITS
SCALE: 1/8" = 1'-0"



ELEVATION B 1/8" = 1'-0"

CHECK AND VERIFY ALL DIMENSIONS BEFORE PROCEEDING WITH WORK. REPORT ANY DISCREPANCIES TO THE ARCHITECT	
1. M. BARBERIS REGISTERED PROFESSIONAL ENGINEER P.O. BOX 1188 SAN FRANCISCO, CALIFORNIA 94101	EDWARD LOUVER REGISTERED PROFESSIONAL ENGINEER 1015 FULTON ST. SAN FRANCISCO, CALIFORNIA 94101
APPROVED: [Signature]	APPROVED: [Signature]
DATE: JUN 13 1978	DATE: JUN 13 1978
ARCHITECTS: BARKSFIELD CITY SCHOOL DISTRICT BARKSFIELD CITY SCHOOL DISTRICT 1000 MARKET STREET SAN FRANCISCO, CALIFORNIA 94102	
JOB NO. 84-14 DRAWN: J.P. CHECKED: C.M. DATE: 09/24/77	
ARCHITECTS: Sahn and Ricks BARKSFIELD CITY SCHOOL DISTRICT 1000 MARKET STREET SAN FRANCISCO, CALIFORNIA 94102	
MECHANICAL PLAN FOR KINDERGARTEN AND TYPICAL CLASSROOM UNITS A,B,C	
SECTION 35 SCHOOL BARKSFIELD CITY SCHOOL DISTRICT BARKSFIELD CITY SCHOOL DISTRICT BARKSFIELD CITY SCHOOL DISTRICT BARKSFIELD CITY SCHOOL DISTRICT	
M-2 8	