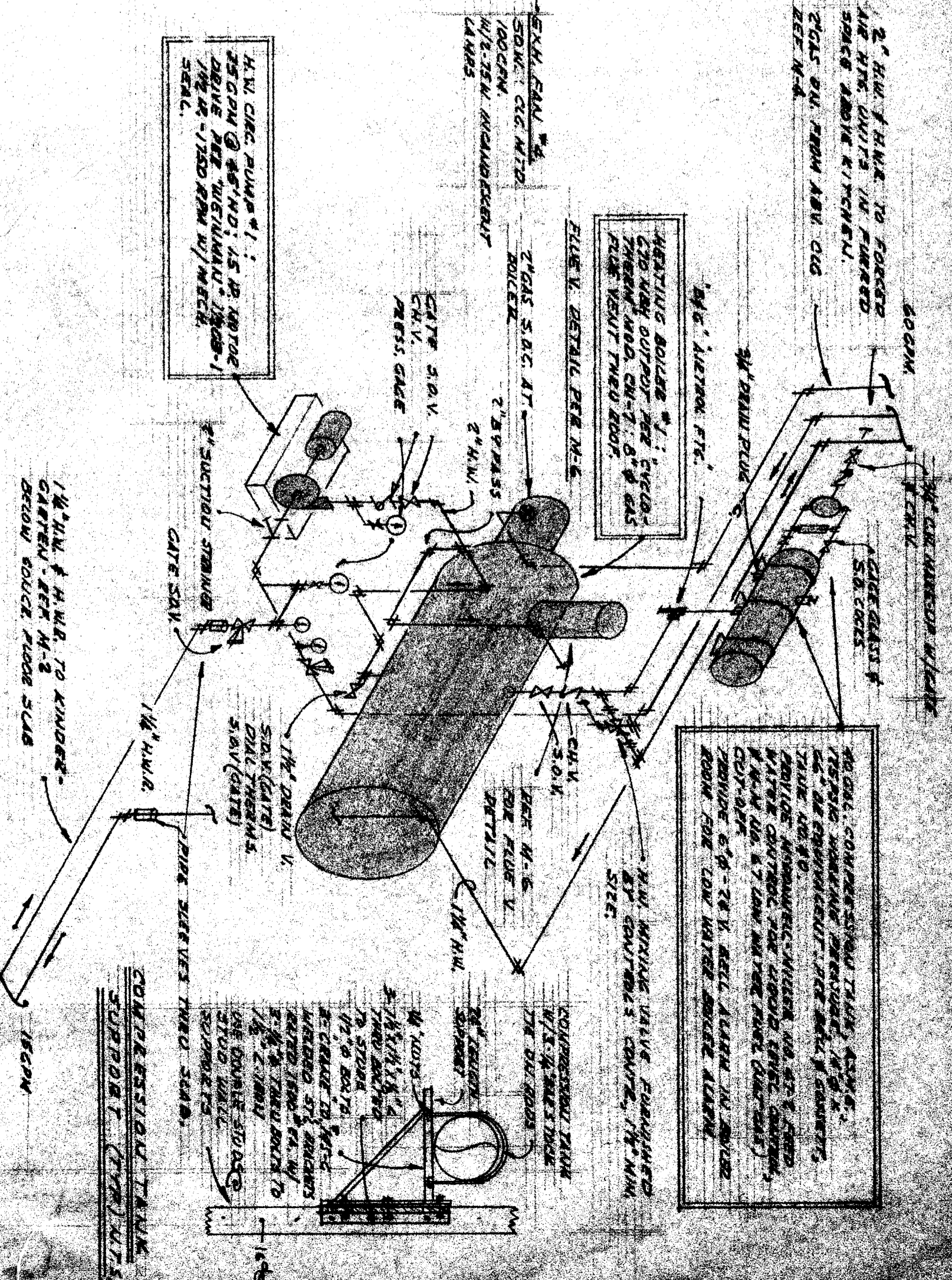
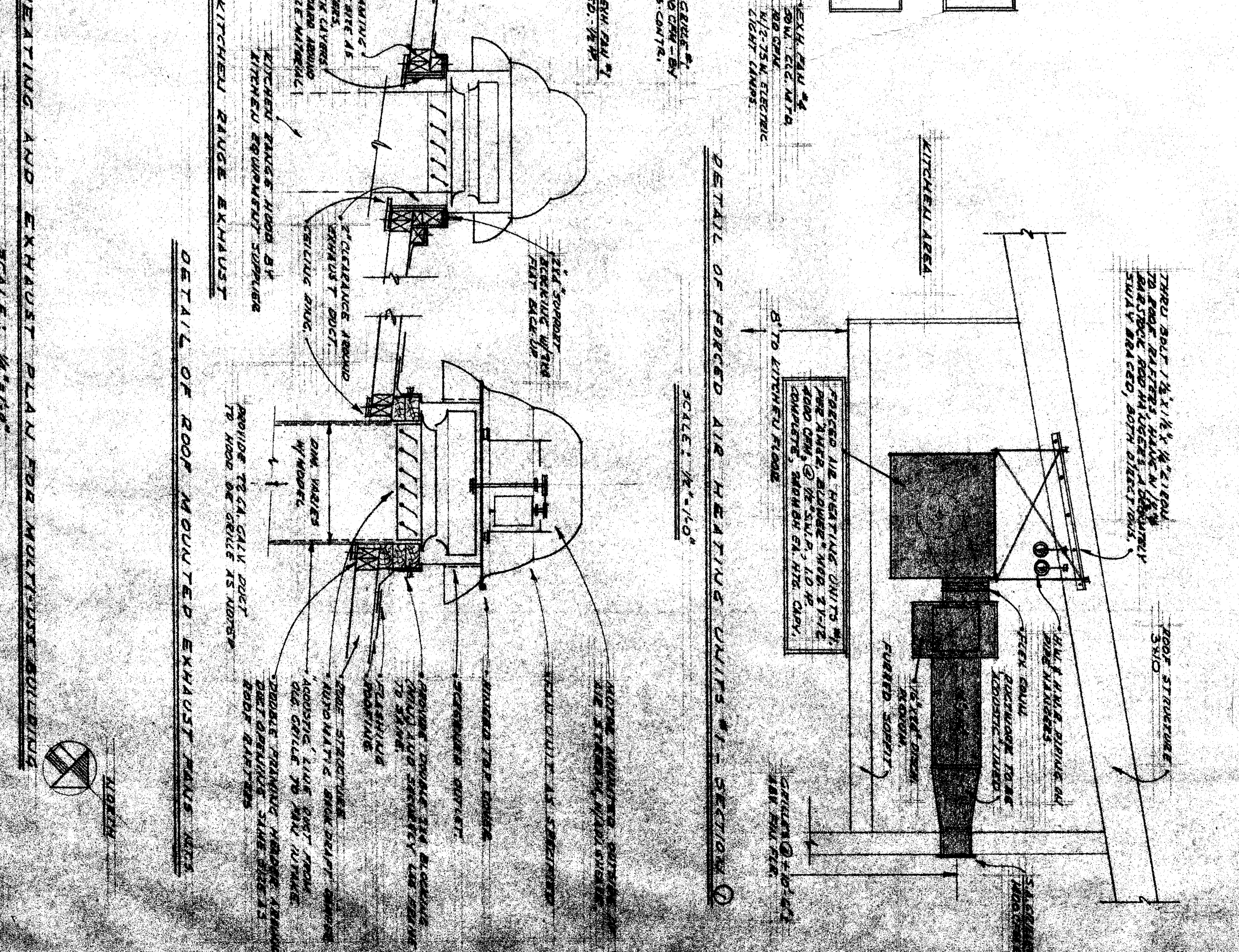
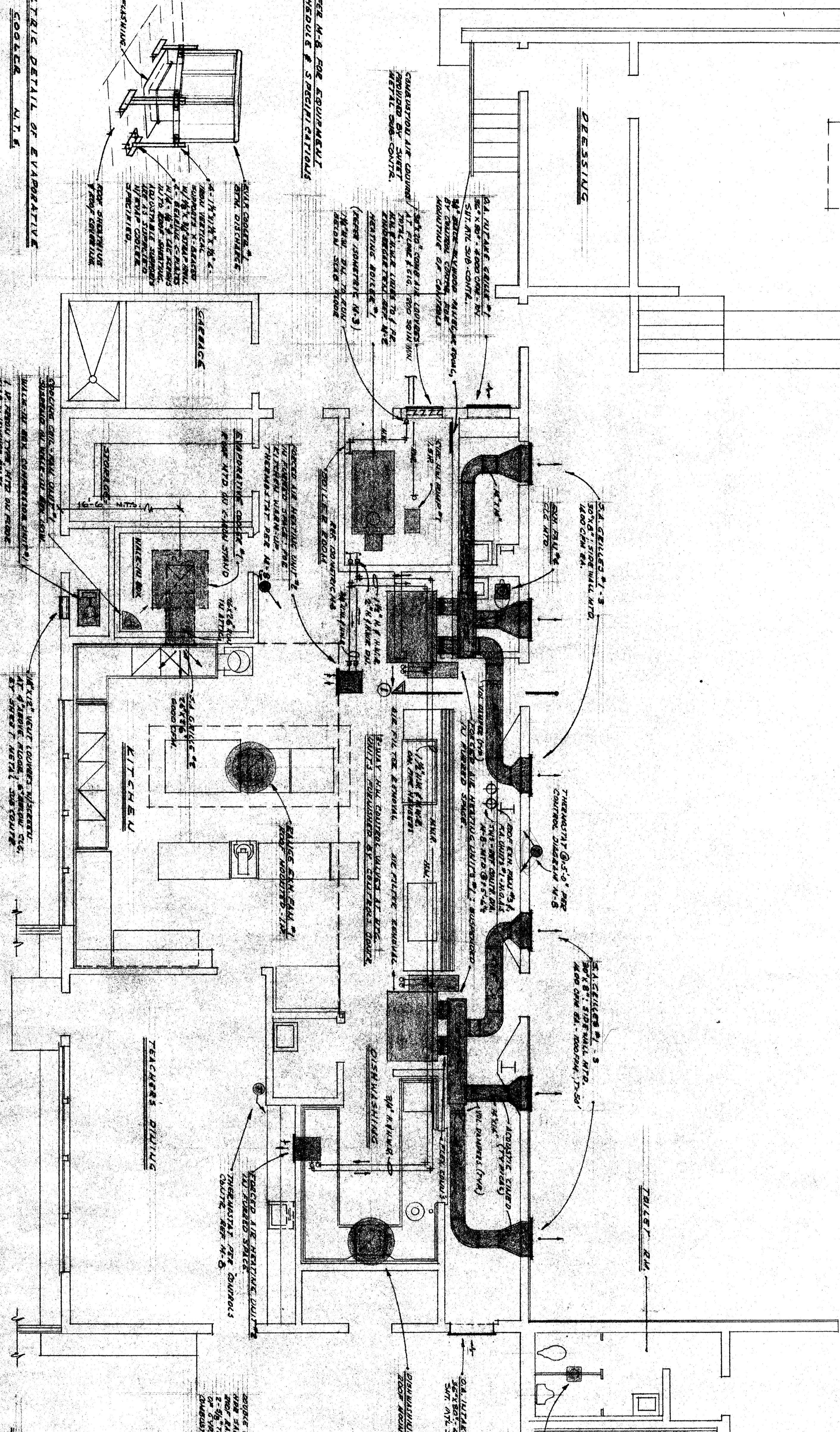


MULTI-VIEW

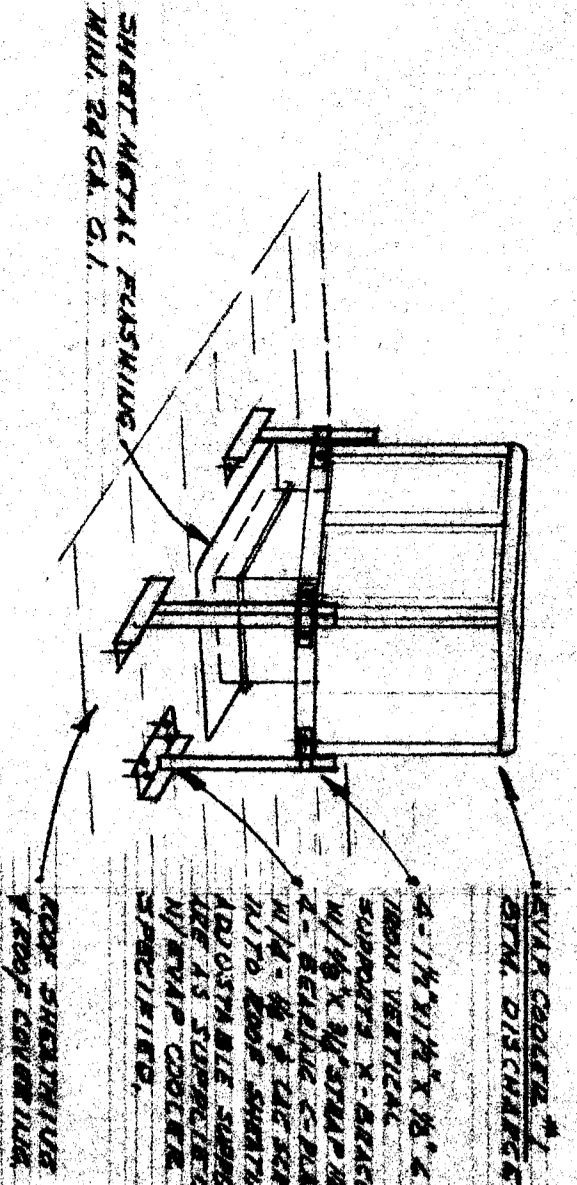


ISOMETRIC PIPING DETAILS AT HEATING BOILERS W. U.T.S.



HEATING AND EXHAUST PLAN FOR MULTIPLE BUILDINGS

ISOMETRIC DETAIL OF EVAPORATIVE



ENTER HERE FOR EQUIPMENT

SCHEDULE B SPECIFICATIONS

CHECK AND VERIFY ALL DIMENSIONS BEFORE PROCEEDING WITH WORK. REPORT ANY DISCREPANCIES TO THE ARCHITECT.

<p>L. M. ROSENBERG CONSULTING ENGINEER 1015 BROADWAY SAN FRANCISCO, CALIFORNIA</p>	<p>STATE OF CALIFORNIA, DEPARTMENT OF PUBLIC WORKS DIVISION OF ARCHITECTURE JULY 1, 1935</p>	<p>EDWARD LOWE ENGINEER 1015 BROADWAY SAN FRANCISCO, CALIFORNIA</p>	<p>WILSON AND WILSON ARCHITECTS 280 N. BROADWAY SAN FRANCISCO, CALIFORNIA</p>	<p>BAKERFIELD CITY SCHOOL DISTRICT BAKERFIELD CITY SCHOOL DISTRICT BAKERFIELD, CALIFORNIA</p>	<p>ARCHITECT'S SECTION 35 SCHOOL BAKERFIELD CITY SCHOOL DISTRICT BAKERFIELD, CALIFORNIA</p>
<p>DATE: JULY 1, 1935</p>	<p>PROJECT: SECTION 35 SCHOOL</p>	<p>SCALE: AS SHOWN</p>	<p>SCALE: AS SHOWN</p>	<p>SCALE: AS SHOWN</p>	<p>SCALE: AS SHOWN</p>

Scale and Title

Ed. J. Park

SECTION 35 SCHOOL

BAKERFIELD CITY SCHOOL DISTRICT