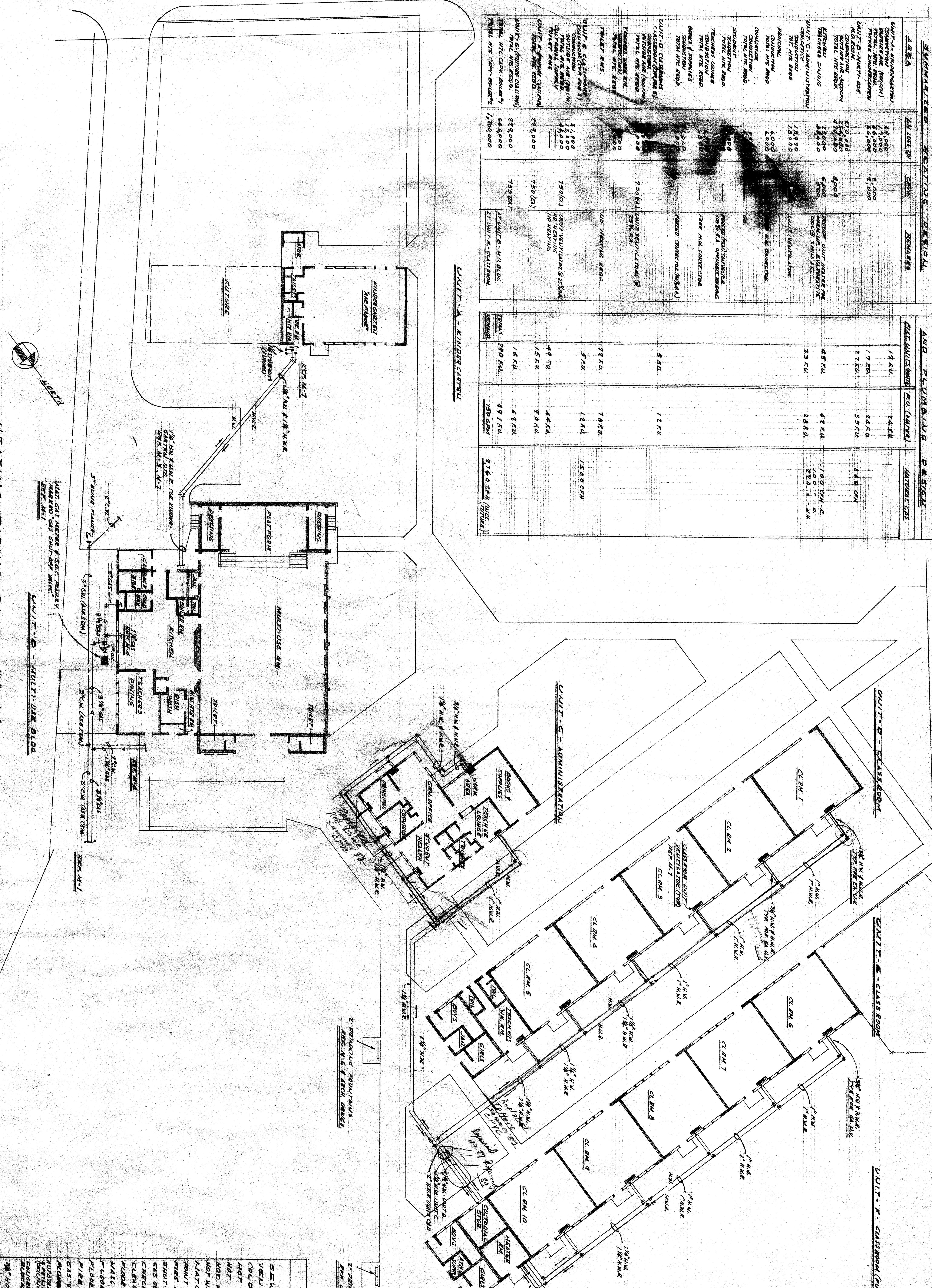


AREA	HEATING DESIGN		AND PLUMBING DESIGN	
	BTU PER HOUR	PIPE	PIPE (INCHES)	WATER FLOW (GPM)
UNIT 1 - KITCHEN	48,000	1/2" CPVC	1.75	1.50
UNIT 2 - RESTROOM	12,000	1/2" CPVC	1.75	1.50
UNIT 3 - OFFICE	24,000	1/2" CPVC	1.75	1.50
UNIT 4 - OFFICE	24,000	1/2" CPVC	1.75	1.50
UNIT 5 - OFFICE	24,000	1/2" CPVC	1.75	1.50
UNIT 6 - OFFICE	24,000	1/2" CPVC	1.75	1.50
UNIT 7 - OFFICE	24,000	1/2" CPVC	1.75	1.50
UNIT 8 - OFFICE	24,000	1/2" CPVC	1.75	1.50
UNIT 9 - OFFICE	24,000	1/2" CPVC	1.75	1.50
UNIT 10 - OFFICE	24,000	1/2" CPVC	1.75	1.50
UNIT 11 - OFFICE	24,000	1/2" CPVC	1.75	1.50
UNIT 12 - OFFICE	24,000	1/2" CPVC	1.75	1.50
UNIT 13 - OFFICE	24,000	1/2" CPVC	1.75	1.50
UNIT 14 - OFFICE	24,000	1/2" CPVC	1.75	1.50
UNIT 15 - OFFICE	24,000	1/2" CPVC	1.75	1.50
UNIT 16 - OFFICE	24,000	1/2" CPVC	1.75	1.50
UNIT 17 - OFFICE	24,000	1/2" CPVC	1.75	1.50
UNIT 18 - OFFICE	24,000	1/2" CPVC	1.75	1.50
UNIT 19 - OFFICE	24,000	1/2" CPVC	1.75	1.50
UNIT 20 - OFFICE	24,000	1/2" CPVC	1.75	1.50
UNIT 21 - OFFICE	24,000	1/2" CPVC	1.75	1.50
UNIT 22 - OFFICE	24,000	1/2" CPVC	1.75	1.50
UNIT 23 - OFFICE	24,000	1/2" CPVC	1.75	1.50
UNIT 24 - OFFICE	24,000	1/2" CPVC	1.75	1.50
UNIT 25 - OFFICE	24,000	1/2" CPVC	1.75	1.50
UNIT 26 - OFFICE	24,000	1/2" CPVC	1.75	1.50
UNIT 27 - OFFICE	24,000	1/2" CPVC	1.75	1.50
UNIT 28 - OFFICE	24,000	1/2" CPVC	1.75	1.50
UNIT 29 - OFFICE	24,000	1/2" CPVC	1.75	1.50
UNIT 30 - OFFICE	24,000	1/2" CPVC	1.75	1.50
UNIT 31 - OFFICE	24,000	1/2" CPVC	1.75	1.50
UNIT 32 - OFFICE	24,000	1/2" CPVC	1.75	1.50
UNIT 33 - OFFICE	24,000	1/2" CPVC	1.75	1.50
UNIT 34 - OFFICE	24,000	1/2" CPVC	1.75	1.50
UNIT 35 - OFFICE	24,000	1/2" CPVC	1.75	1.50
UNIT 36 - OFFICE	24,000	1/2" CPVC	1.75	1.50
UNIT 37 - OFFICE	24,000	1/2" CPVC	1.75	1.50
UNIT 38 - OFFICE	24,000	1/2" CPVC	1.75	1.50
UNIT 39 - OFFICE	24,000	1/2" CPVC	1.75	1.50
UNIT 40 - OFFICE	24,000	1/2" CPVC	1.75	1.50
UNIT 41 - OFFICE	24,000	1/2" CPVC	1.75	1.50
UNIT 42 - OFFICE	24,000	1/2" CPVC	1.75	1.50
UNIT 43 - OFFICE	24,000	1/2" CPVC	1.75	1.50
UNIT 44 - OFFICE	24,000	1/2" CPVC	1.75	1.50
UNIT 45 - OFFICE	24,000	1/2" CPVC	1.75	1.50
UNIT 46 - OFFICE	24,000	1/2" CPVC	1.75	1.50
UNIT 47 - OFFICE	24,000	1/2" CPVC	1.75	1.50
UNIT 48 - OFFICE	24,000	1/2" CPVC	1.75	1.50
UNIT 49 - OFFICE	24,000	1/2" CPVC	1.75	1.50
UNIT 50 - OFFICE	24,000	1/2" CPVC	1.75	1.50
UNIT 51 - OFFICE	24,000	1/2" CPVC	1.75	1.50
UNIT 52 - OFFICE	24,000	1/2" CPVC	1.75	1.50
UNIT 53 - OFFICE	24,000	1/2" CPVC	1.75	1.50
UNIT 54 - OFFICE	24,000	1/2" CPVC	1.75	1.50
UNIT 55 - OFFICE	24,000	1/2" CPVC	1.75	1.50
UNIT 56 - OFFICE	24,000	1/2" CPVC	1.75	1.50
UNIT 57 - OFFICE	24,000	1/2" CPVC	1.75	1.50
UNIT 58 - OFFICE	24,000	1/2" CPVC	1.75	1.50
UNIT 59 - OFFICE	24,000	1/2" CPVC	1.75	1.50
UNIT 60 - OFFICE	24,000	1/2" CPVC	1.75	1.50
UNIT 61 - OFFICE	24,000	1/2" CPVC	1.75	1.50
UNIT 62 - OFFICE	24,000	1/2" CPVC	1.75	1.50
UNIT 63 - OFFICE	24,000	1/2" CPVC	1.75	1.50
UNIT 64 - OFFICE	24,000	1/2" CPVC	1.75	1.50
UNIT 65 - OFFICE	24,000	1/2" CPVC	1.75	1.50
UNIT 66 - OFFICE	24,000	1/2" CPVC	1.75	1.50
UNIT 67 - OFFICE	24,000	1/2" CPVC	1.75	1.50
UNIT 68 - OFFICE	24,000	1/2" CPVC	1.75	1.50
UNIT 69 - OFFICE	24,000	1/2" CPVC	1.75	1.50
UNIT 70 - OFFICE	24,000	1/2" CPVC	1.75	1.50
UNIT 71 - OFFICE	24,000	1/2" CPVC	1.75	1.50
UNIT 72 - OFFICE	24,000	1/2" CPVC	1.75	1.50
UNIT 73 - OFFICE	24,000	1/2" CPVC	1.75	1.50
UNIT 74 - OFFICE	24,000	1/2" CPVC	1.75	1.50
UNIT 75 - OFFICE	24,000	1/2" CPVC	1.75	1.50
UNIT 76 - OFFICE	24,000	1/2" CPVC	1.75	1.50
UNIT 77 - OFFICE	24,000	1/2" CPVC	1.75	1.50
UNIT 78 - OFFICE	24,000	1/2" CPVC	1.75	1.50
UNIT 79 - OFFICE	24,000	1/2" CPVC	1.75	1.50
UNIT 80 - OFFICE	24,000	1/2" CPVC	1.75	1.50
UNIT 81 - OFFICE	24,000	1/2" CPVC	1.75	1.50
UNIT 82 - OFFICE	24,000	1/2" CPVC	1.75	1.50
UNIT 83 - OFFICE	24,000	1/2" CPVC	1.75	1.50
UNIT 84 - OFFICE	24,000	1/2" CPVC	1.75	1.50
UNIT 85 - OFFICE	24,000	1/2" CPVC	1.75	1.50
UNIT 86 - OFFICE	24,000	1/2" CPVC	1.75	1.50
UNIT 87 - OFFICE	24,000	1/2" CPVC	1.75	1.50
UNIT 88 - OFFICE	24,000	1/2" CPVC	1.75	1.50
UNIT 89 - OFFICE	24,000	1/2" CPVC	1.75	1.50
UNIT 90 - OFFICE	24,000	1/2" CPVC	1.75	1.50
UNIT 91 - OFFICE	24,000	1/2" CPVC	1.75	1.50
UNIT 92 - OFFICE	24,000	1/2" CPVC	1.75	1.50
UNIT 93 - OFFICE	24,000	1/2" CPVC	1.75	1.50
UNIT 94 - OFFICE	24,000	1/2" CPVC	1.75	1.50
UNIT 95 - OFFICE	24,000	1/2" CPVC	1.75	1.50
UNIT 96 - OFFICE	24,000	1/2" CPVC	1.75	1.50
UNIT 97 - OFFICE	24,000	1/2" CPVC	1.75	1.50
UNIT 98 - OFFICE	24,000	1/2" CPVC	1.75	1.50
UNIT 99 - OFFICE	24,000	1/2" CPVC	1.75	1.50
UNIT 100 - OFFICE	24,000	1/2" CPVC	1.75	1.50



### LEGEND

SEWER (WASTE)	—
COLD WATER	—
HOT WATER (BOYS)	—
HOT WATER (GIRLS)	—
HOT WATER (GENERAL)	—
HOT WATER RETURN	—
NATURAL GAS	—
STEAM	—
VENT	—
PLUMBING SYMBOLS	—

HEATING AND PLUMBING DESIGN

DATE OF DESIGN: JUN 18 1939

PROJECT NO. 58-76

SECTION 55 SCHOOL BUILDING

<b>CONTRACTING ENGINEER</b> I. M. BERENSON 1011 BROAD ST. SAN FRANCISCO, CALIF.	<b>ARCHITECTS</b> WILSON AND WILSON 1011 BROAD ST. SAN FRANCISCO, CALIF.
<b>DATE OF DESIGN</b> JUN 18 1939	<b>PROJECT NO.</b> 58-76
<b>SECTION 55 SCHOOL BUILDING</b> BARKSHIELD CITY SCHOOL DISTRICT	<b>HEATING AND PLUMBING DESIGN</b>