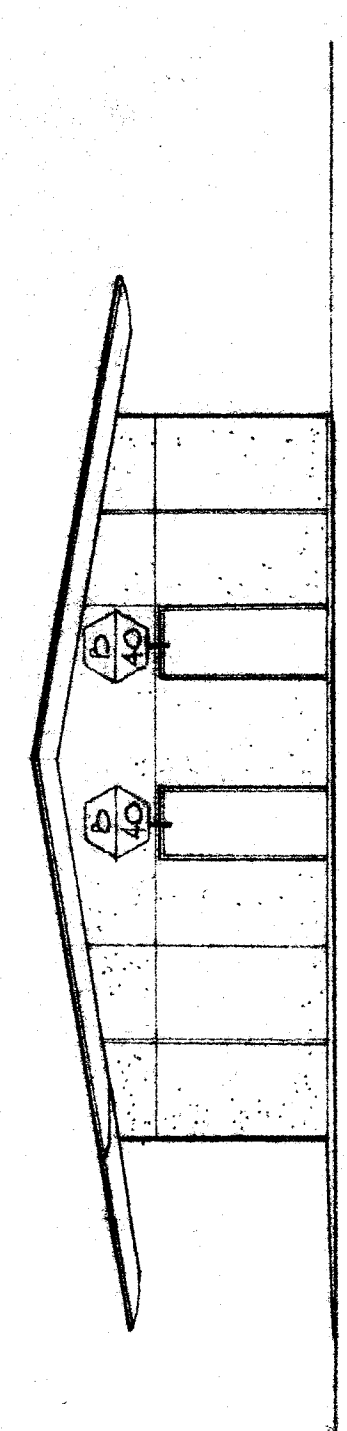
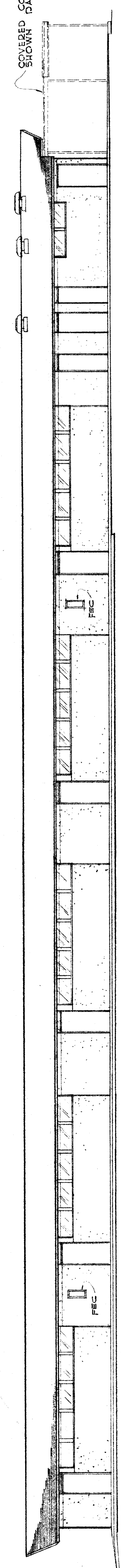


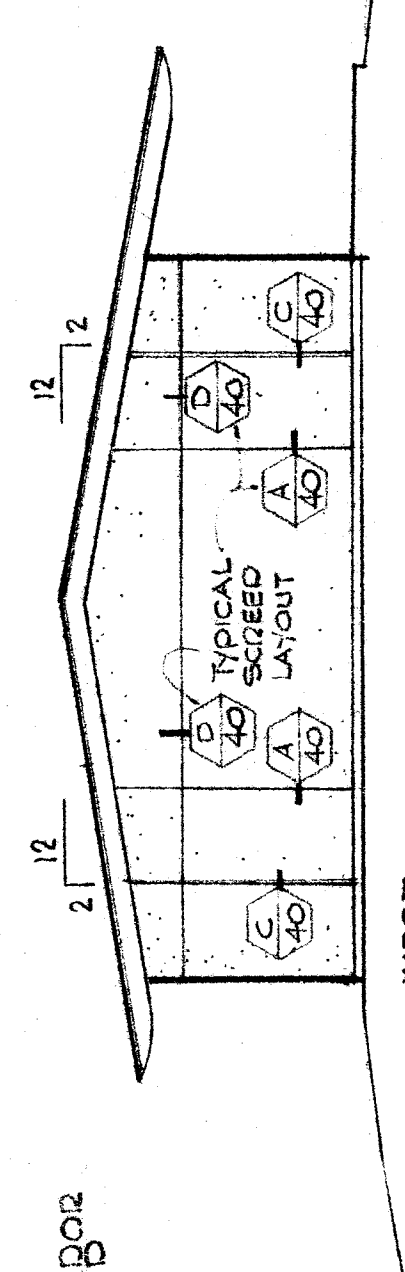
NORTH



EAST SHOWAL WITHOUT COVERED PASSAGE

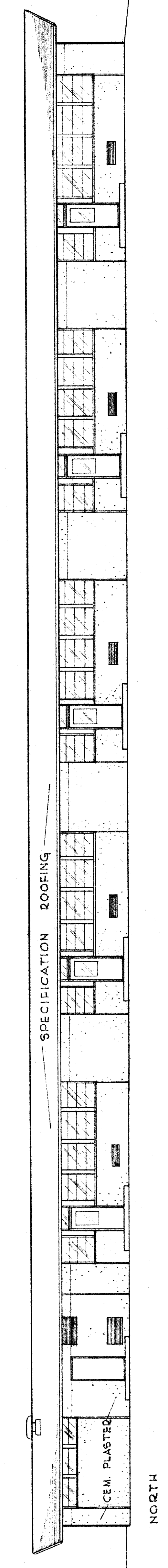


SOUTH

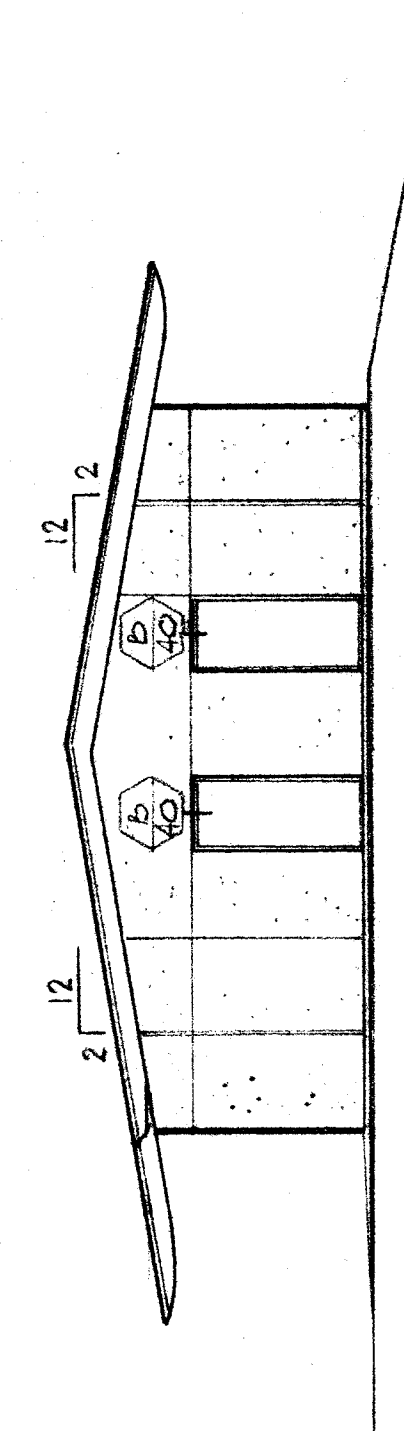


WEST

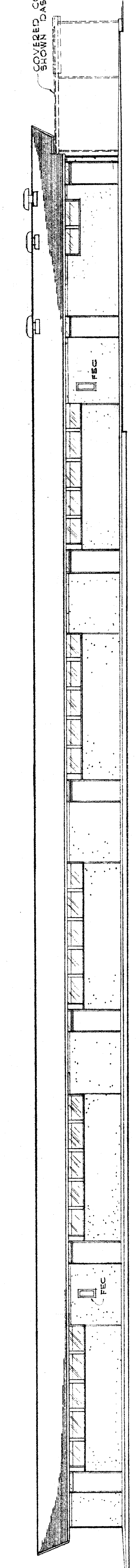
UNIT 'D' CLASSROOMS



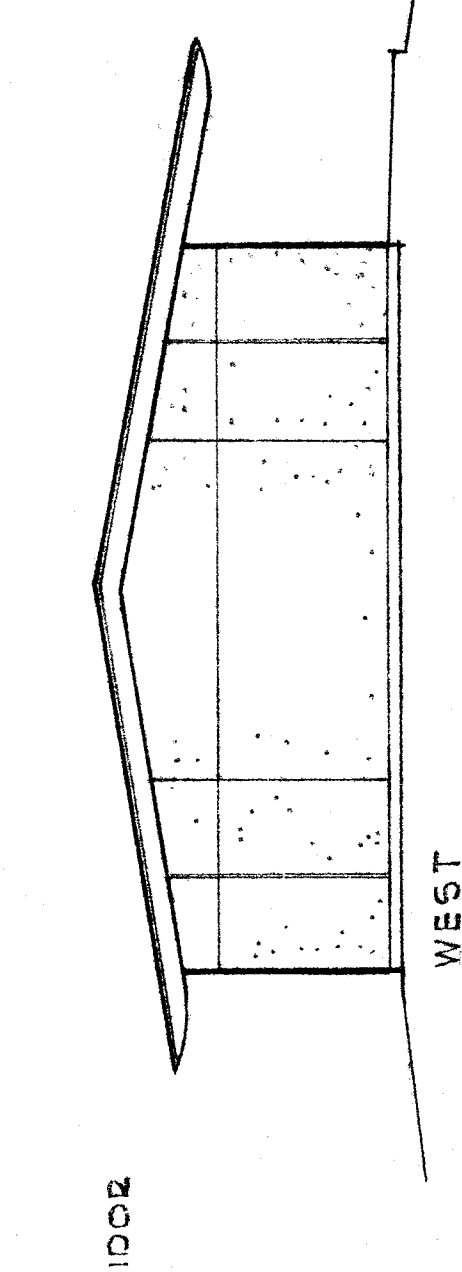
NORTH



EAST SHOWAL WITHOUT COVERED PASSAGE



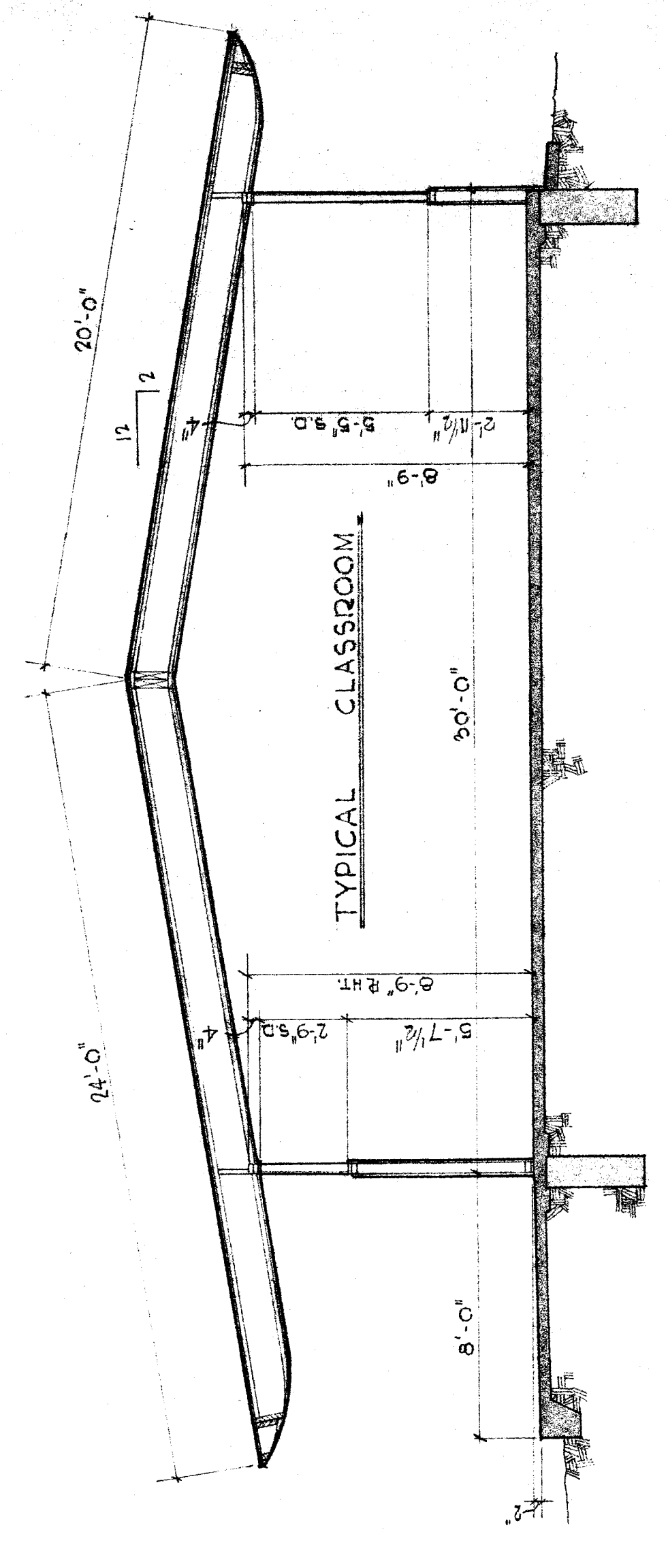
SOUTH



WEST

UNIT 'E' CLASSROOMS

EXTERIOR ELEVATIONS 1/8"=1'-0"



SECTION 1/4"=1'-0"

LEGEND

1	ALL WALL AND BASE MATERIAL SHOWN ON NORTH ELEVATION ARE TYPICAL FOR ALL ELEVATIONS UNLESS OTHERWISE NOTED
2	DETAIL NO. SEE SPEC 22
3	DETAIL NO. SEE SPEC 22

CHECK AND VERIFY ALL DIMENSIONS BEFORE PROCEEDING WITH THE WORK. REPORT ANY DISCREPANCIES TO THE ARCHITECT		JOB NO. 55-74-2 DRAWN BY: [Signature] CHECKED BY: [Signature] DATE: JUN 17 1964	ARCHITECTS Stuhr and Ficks BAKERSFIELD CALIFORNIA [Signature]	UNIT 'D' SECTION 35 SCHOOL TYPICAL CLASSROOM SECTION BAKERSFIELD CITY SCHOOL DISTRICT BAKERSFIELD, KERN COUNTY CALIFORNIA
STATE OF CALIFORNIA DIVISION OF ARCHITECTURE APPROVED: [Signature] APPLICATION NO. 10878	BAKERSFIELD CITY SCHOOL DISTRICT BOARD OF EDUCATION APPROVED: [Signature] DATE: JUN 22 1964 BY: [Signature]	DATE: JUN 17 1964 BY: [Signature]	REGISTERED PROFESSIONAL ENGINEER [Signature]	A20 of 20