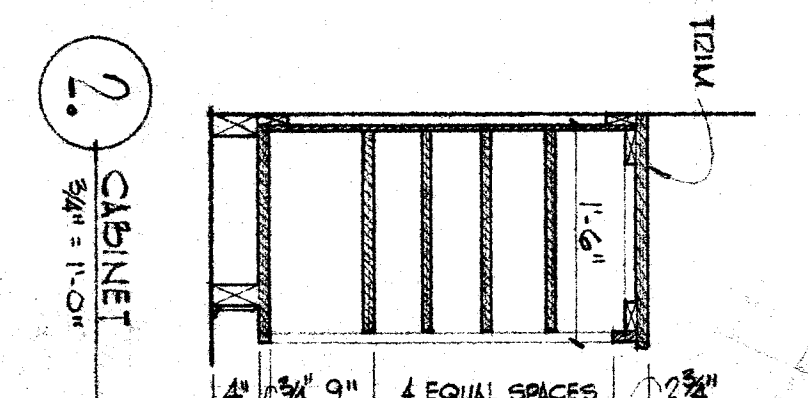
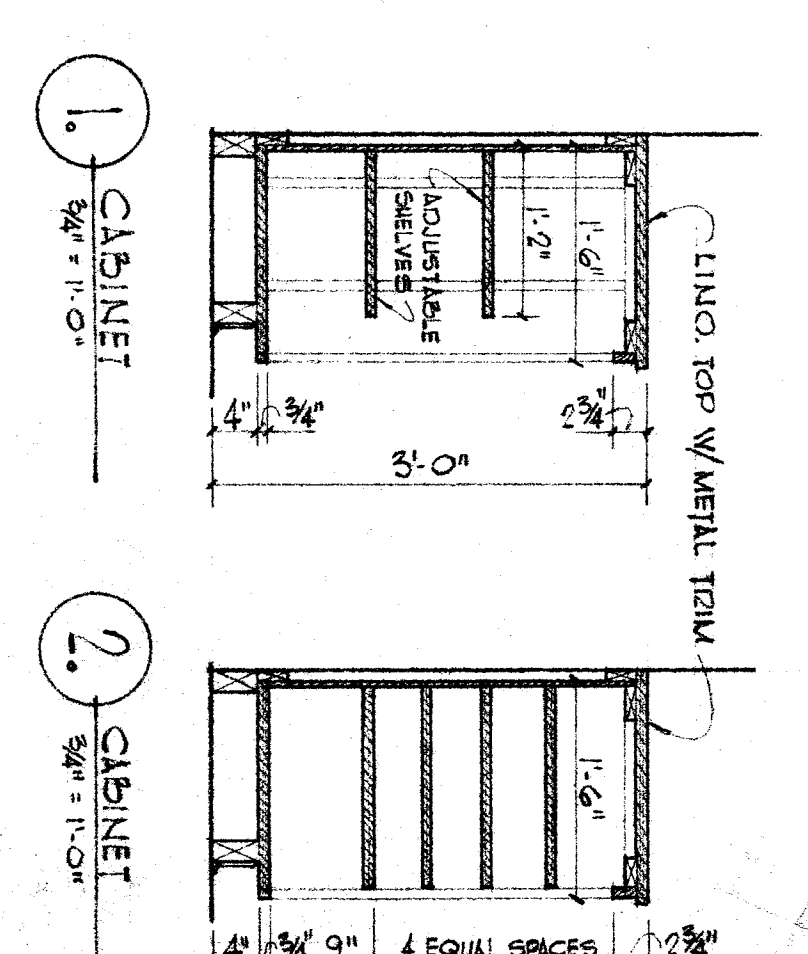
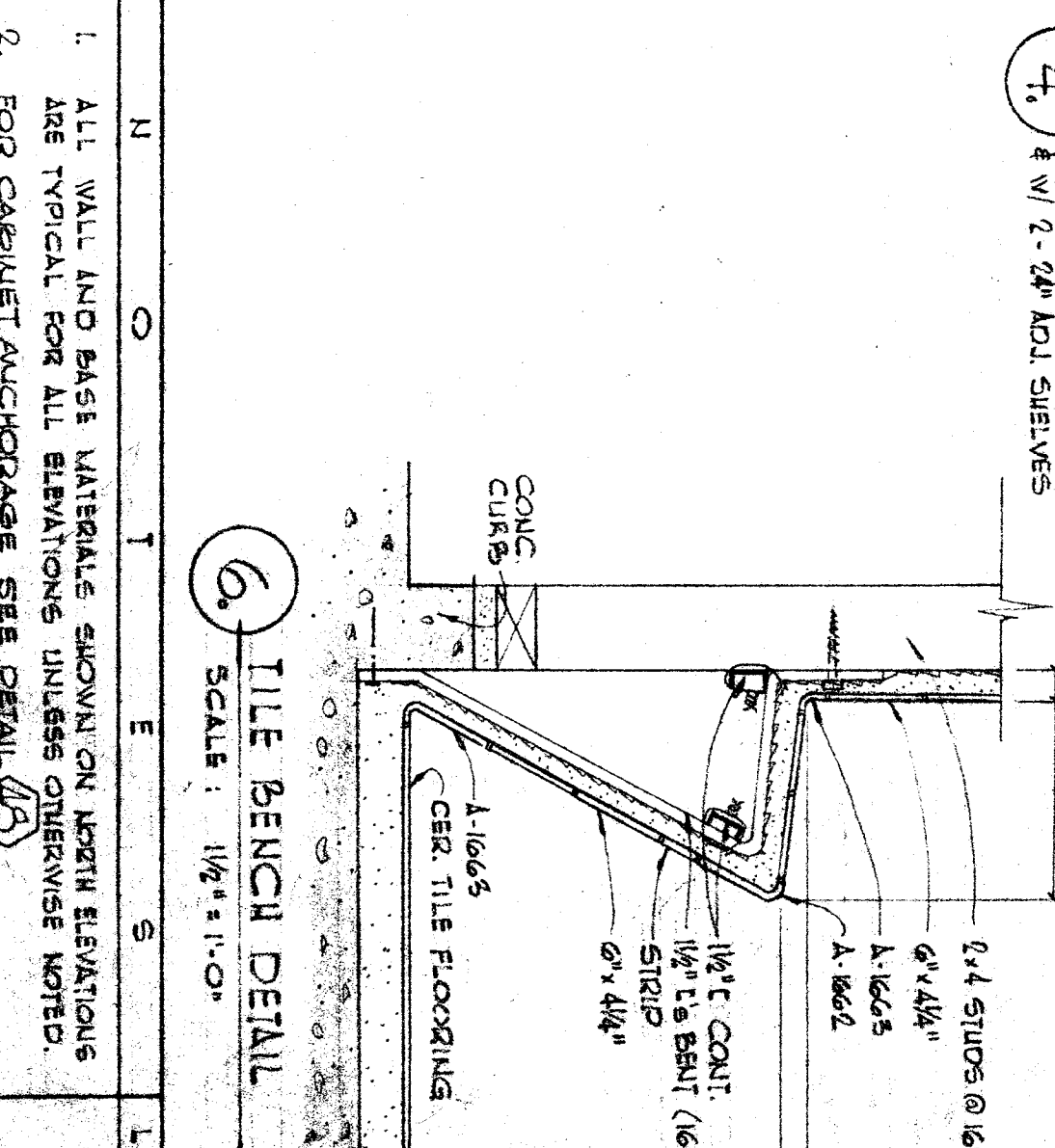
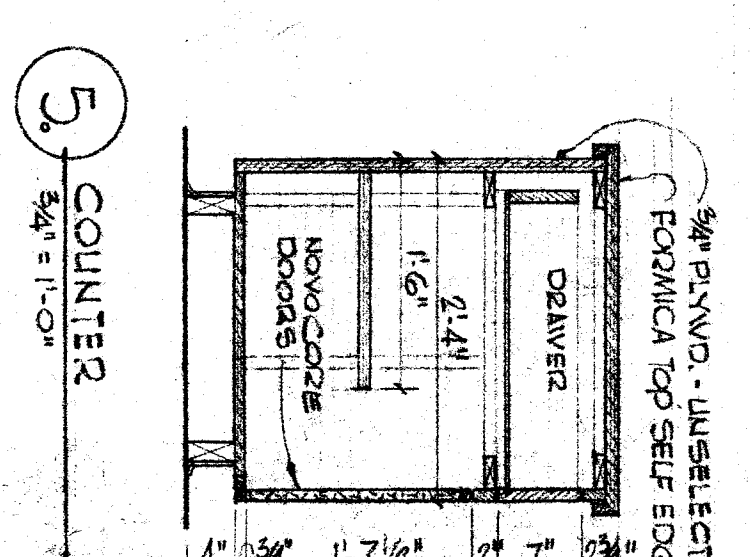
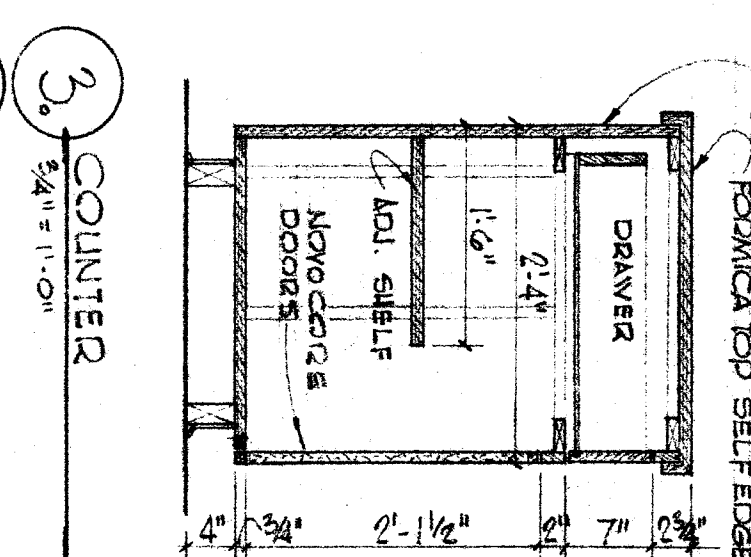
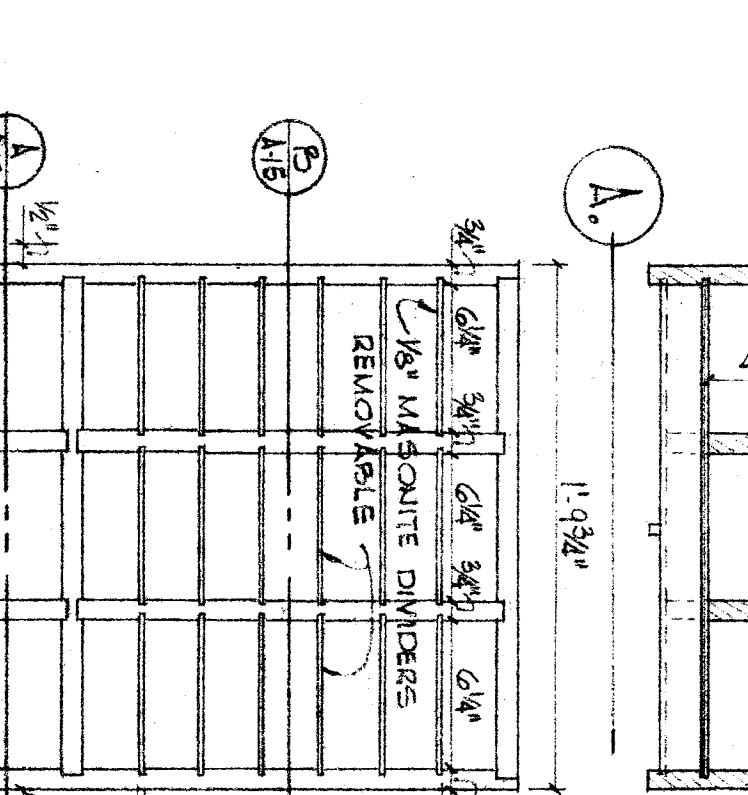
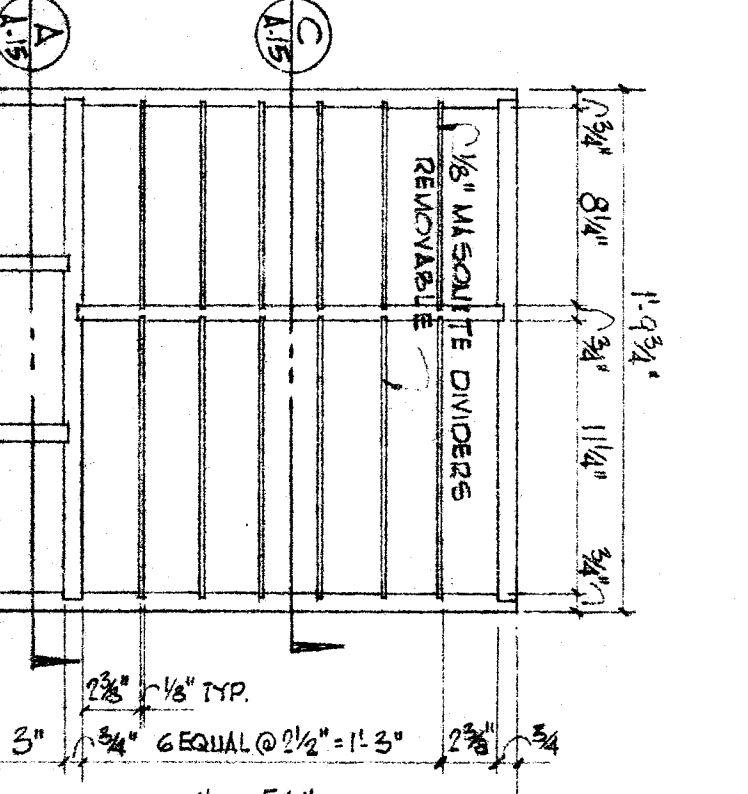
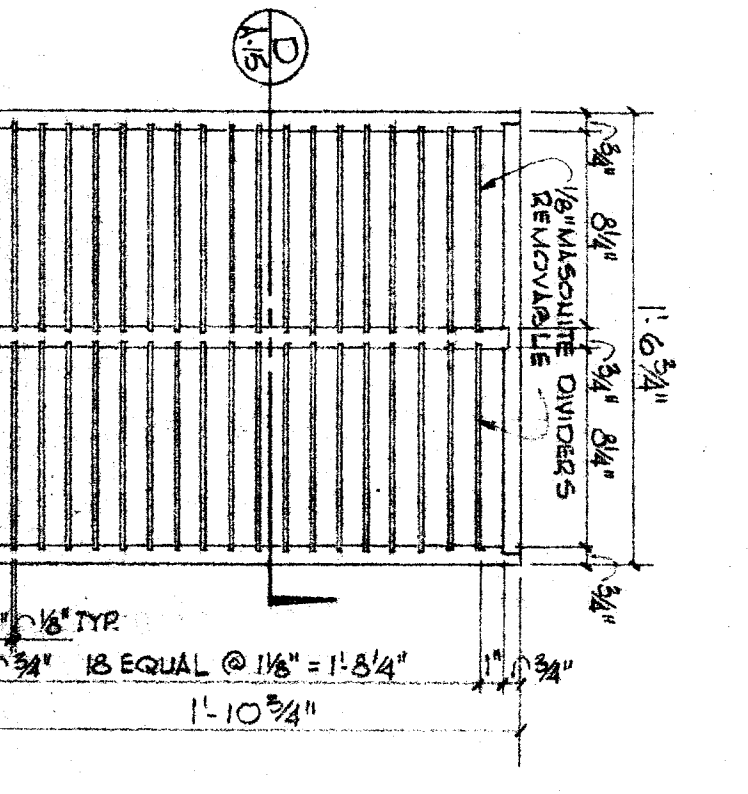
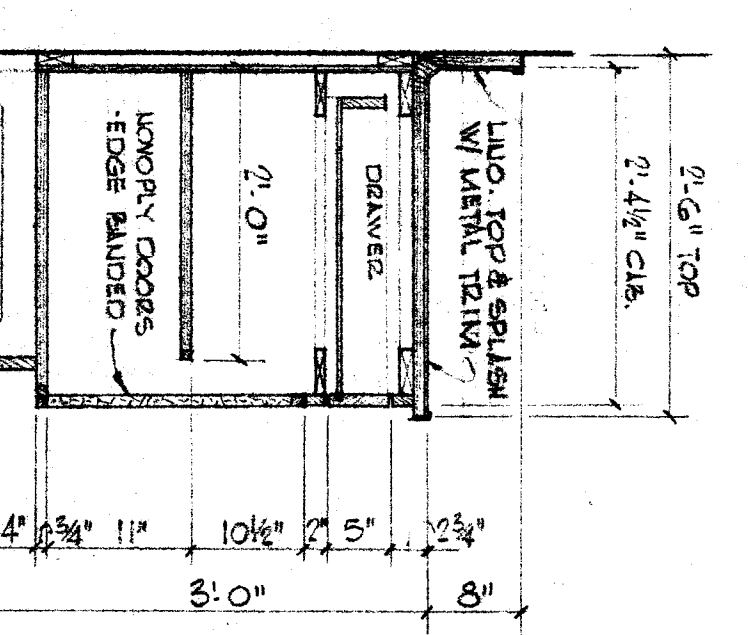
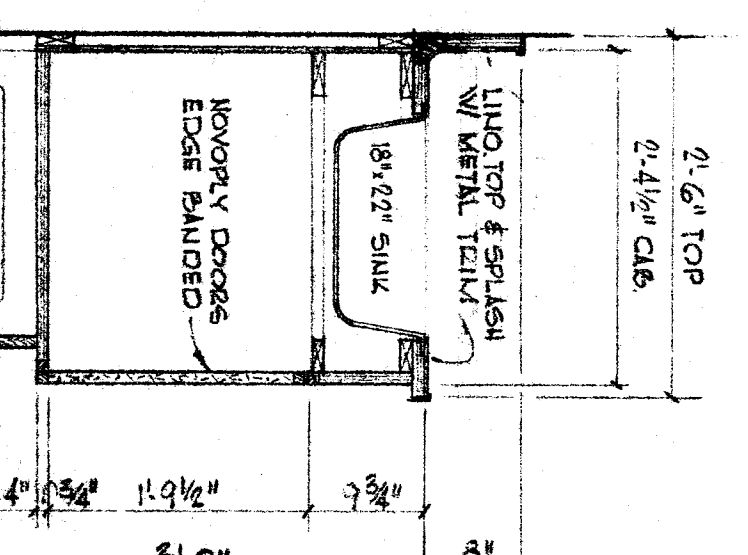
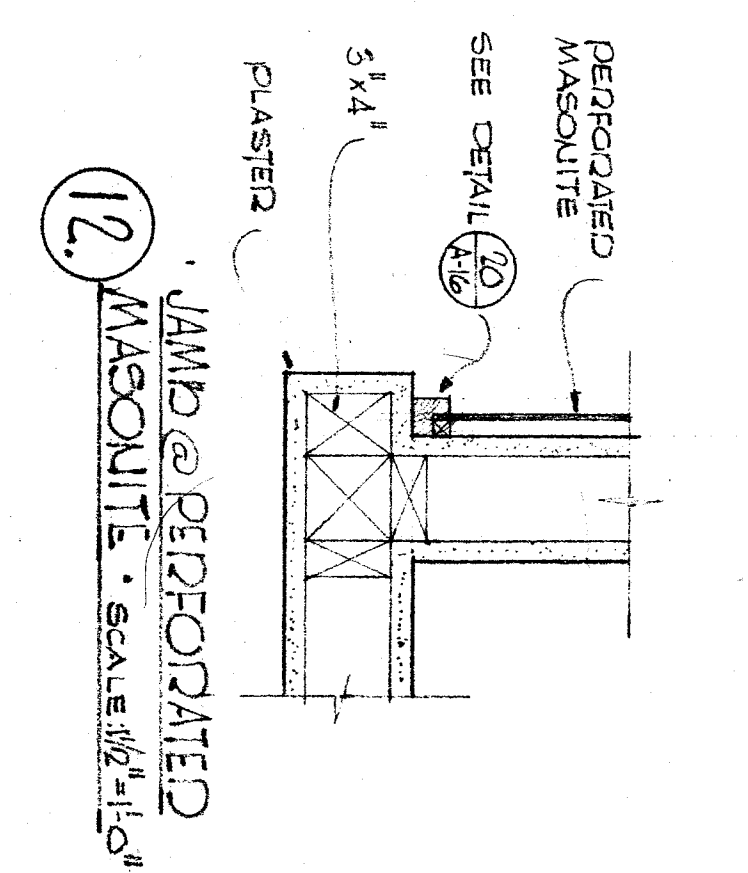
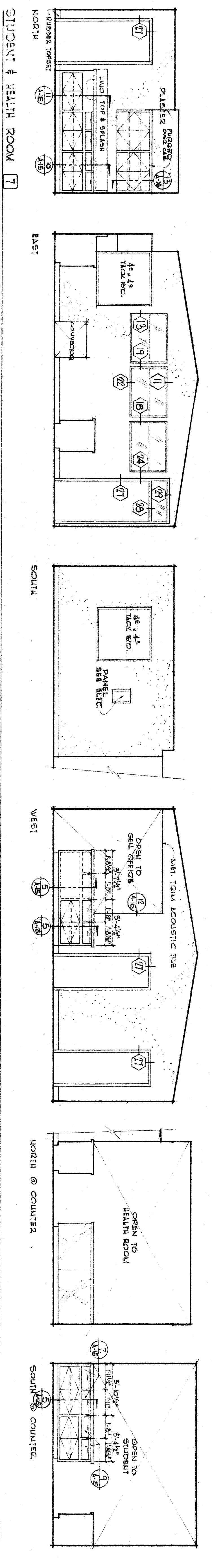
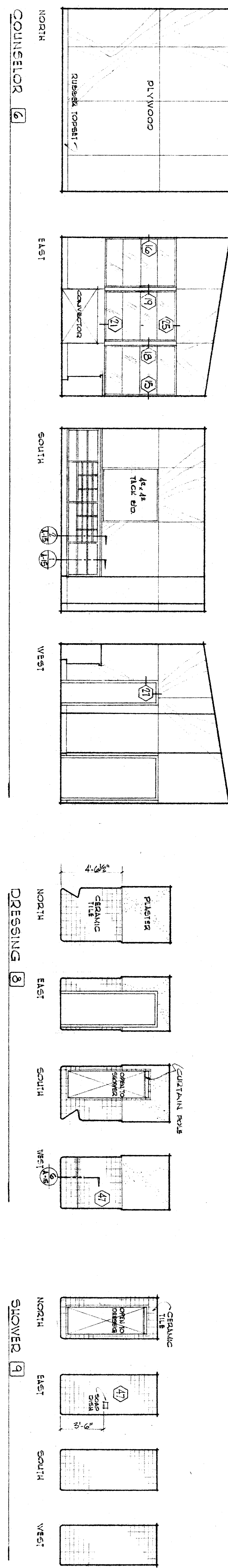
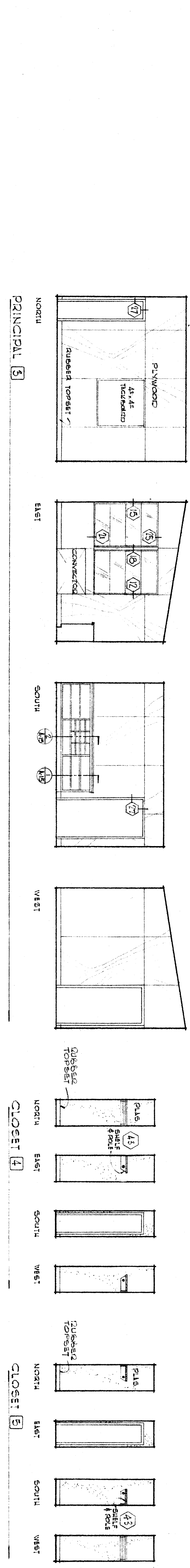


PUBLIC & GENERAL OFFICE 1
SEE SHEET A-116 FOR ELEVATIONS OF ROOM #2



CHECK AND VERIFY ALL DIMENSIONS BEFORE PROCEEDING WITH THE WORK. REPORT ANY DISCREPANCIES TO THE ARCHITECT

STATE OF CALIFORNIA - DEPARTMENT OF PUBLIC WORKS APPLICATION NO. 10617 APPROVED: JUN 17 1960 SUPERVISING ARCHITECTURAL ENGINEER	DAVIDSFIELD CITY SCHOOL DISTRICT BOARD OF EDUCATION DAVIDSFIELD CITY SCHOOL DISTRICT APPROVED BY: [Signature] DATE: JUN 17 1960	JOB NO. 55-74 DRAWN BY: [Signature] DATE: JUN 17 1960	ARCHITECTS STARK AND FRISBIE SHERBORN CALIFORNIA	INTERIOR ELEVATIONS, ROOMS 1, 2, 3, 7, 8, 9 AND DETAILS. SECTION 35 SCHOOL DAVIDSFIELD CITY SCHOOL DISTRICT KERN COUNTY, CALIFORNIA
--	---	---	--	--