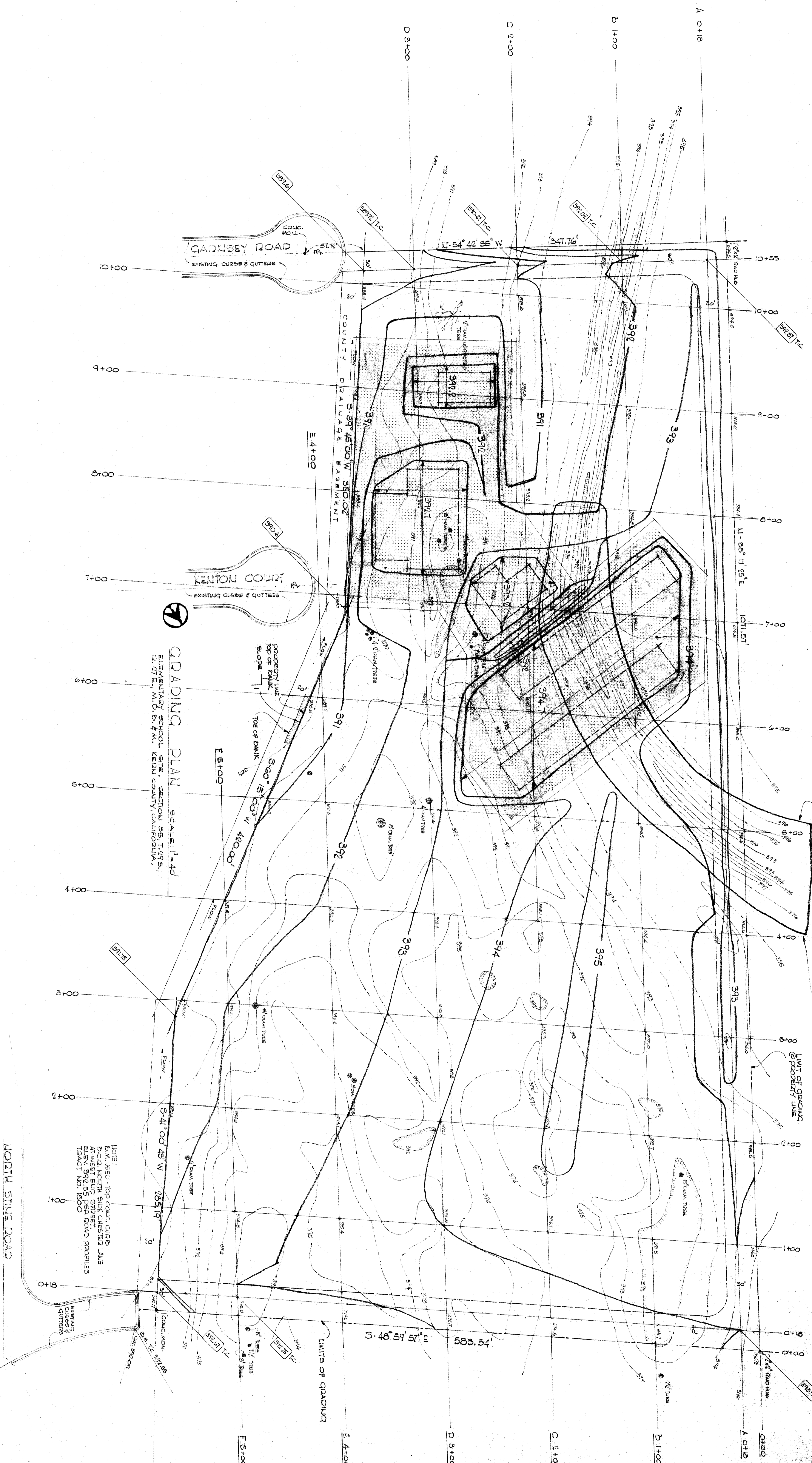


IRRIGATION DITCH HAS BEEN FILLED.
 CONTOURS DO NOT ASSUME NATURAL
 SLOPE. ALSO FOR INDICATION OF POSITION
 OF BEST DITCH FILL TO BE REMOVED.



GRADING PLAN
 SCALE: 1" = 40'
 EISENHARTZ SCHOOL SITE, SECTION 25, T.08 S.,
 R. 07 E., W.D. 5, 4th W., KERN COUNTY, CALIFORNIA.

LEGEND
 76.20/55 - TOP CURB ELEV.
 76.20/55 - EXISTING ELEVATION
 76.20/55 - FINISH GRADE AT A POINT
 --- FINISH GRADE
 --- EXISTING CONTOURS
 --- FINISH CONTOURS
 --- DIRECTION OF DRAINAGE FROM ALL TERRACES & DIMENSIONS ARE SHOWN IN FEET AND DECIMALS THEREOF.
 [Symbol] LIMITS OF COMPACTED FILL AREA
 [Symbol] FUTURE BUILDING LOCATIONS
 [Symbol] FINISH GRADE AT A POINT

STATE OF CALIFORNIA DIVISION OF PUBLIC WORKS	CHECK AND VERIFY ALL DIMENSIONS BEFORE PROCEEDING WITH THE WORK. REPORT ANY DISCREPANCIES TO THE ARCHITECT
APPLICATION NO. APPROVED	
DATE	
REGISTERED PROFESSIONAL ENGINEER	
BAKERSFIELD CITY SCHOOL DISTRICT BOARD OF EDUCATION	
Approved: <i>David Rudolph</i> MAR 2 1988	
DRAWN BY	JOB NO. 88-741
CHECKED BY	DATE MAR 20 1988
Architects: <i>Stubs and Hicks</i> AMERICAN INSTITUTE OF ARCHITECTS CALIFORNIA 3400 GARDSEY ROAD BAKERSFIELD, CALIFORNIA 93311	
Architect: <i>James M. Hill</i> CALIFORNIA 3400 GARDSEY ROAD BAKERSFIELD, CALIFORNIA 93311	
GRADING PLAN SITE GRADING SECTION 25 SCHOOL BAKERSFIELD CITY SCHOOL DISTRICT KERN COUNTY, CALIFORNIA	
A1	