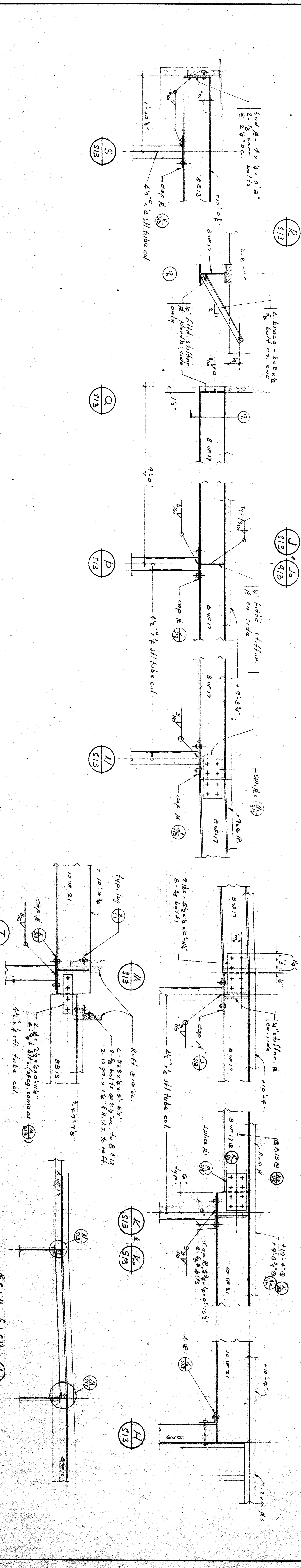
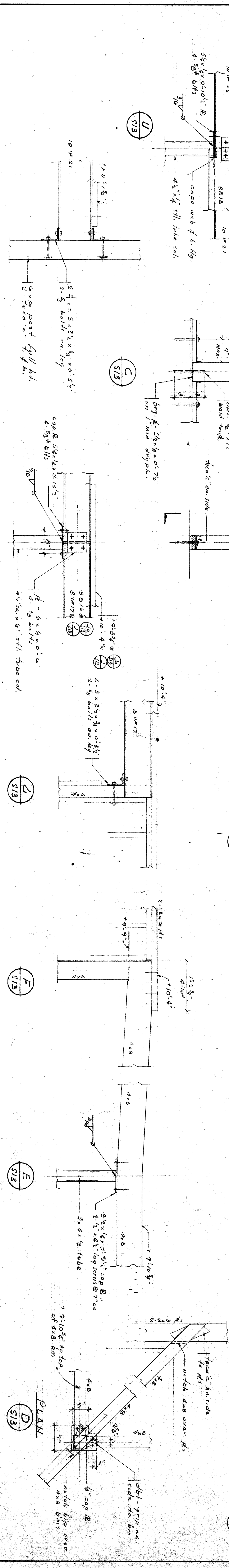


TRUSS ELEVATION
Scale: 3/4" = 1'-0"

TRUSS BRACING
Scale: 3/4" = 1'-0"



OFFICE OF SUPERINTENDENT OF SCHOOLS STATE OF CALIFORNIA DEPARTMENT OF PUBLIC WORKS DIVISION OF ARCHITECTURE		STATE OF CALIFORNIA DEPARTMENT OF PUBLIC WORKS DIVISION OF ARCHITECTURE 1722 D APPROVED BY: [Signature] DATE: [Date]		BAKERSFIELD CITY SCHOOL DISTRICT BAKERSFIELD, CALIFORNIA BOARD OF EDUCATION.		APPROVED BY: [Signature] DATE: [Date]		CHECK AND VERIFY ALL DIMENSIONS AND CONDITIONS FOR THE BEFORE PROCEEDING WITH WORK. REPORT ANY DISCREPANCIES TO THE ARCHITECT.		BILLMAN & NOWELL STRUCTURAL ENGINEERS 1015 N. G STREET BAKERSFIELD, CALIFORNIA		DRAWN BY: [Signature] CHECKED BY: [Signature]		ERNEST L. MCCOY ARCHITECT 1015 N. G STREET BAKERSFIELD, CALIFORNIA		JOB NO. [Number] PICO STREET AND EDWARDS AVE. BAKERSFIELD, CALIFORNIA		SHEET NO. S13 OF [Total] SHEETS	
--	--	---	--	--	--	--	--	--	--	---	--	--	--	---	--	---	--	---	--