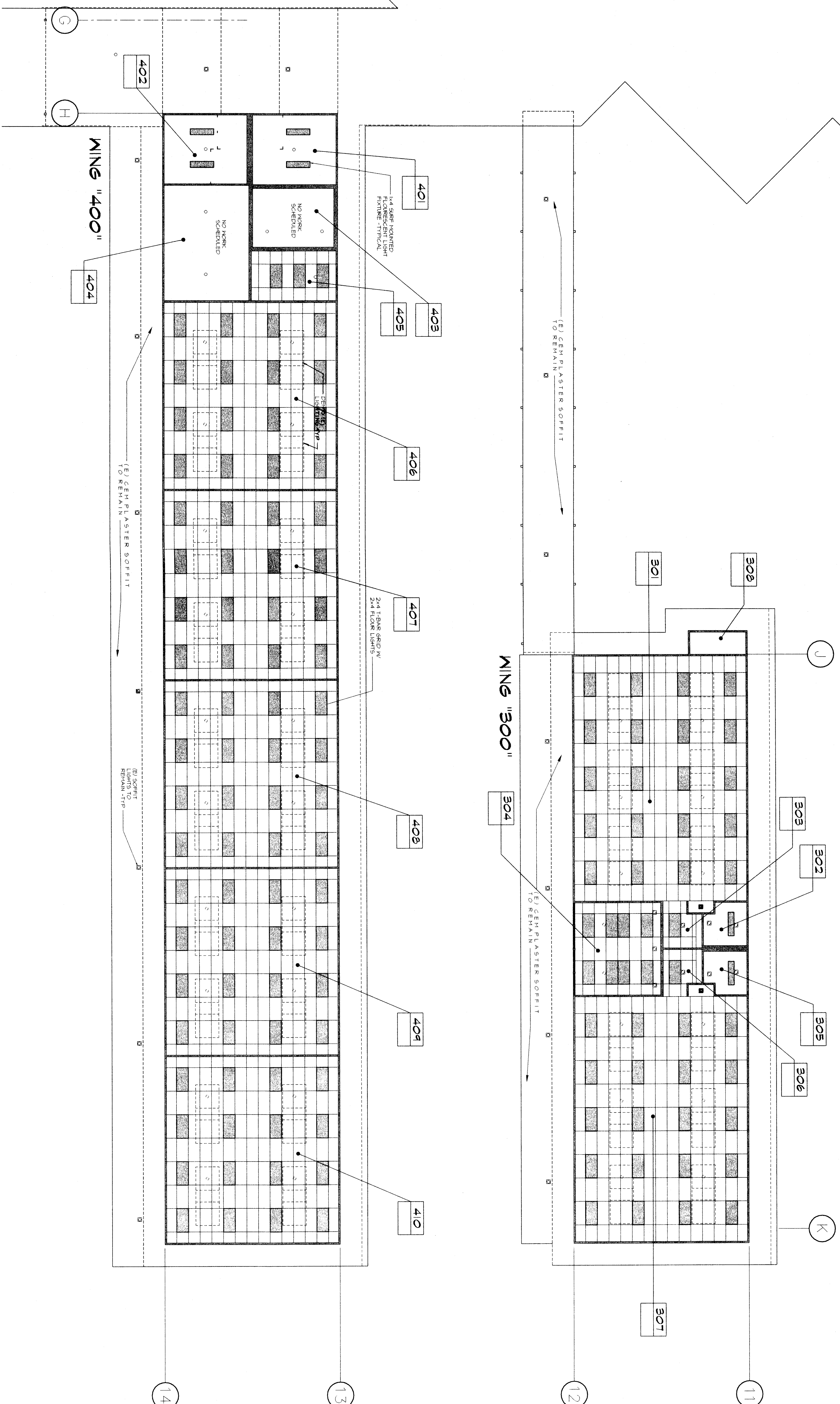


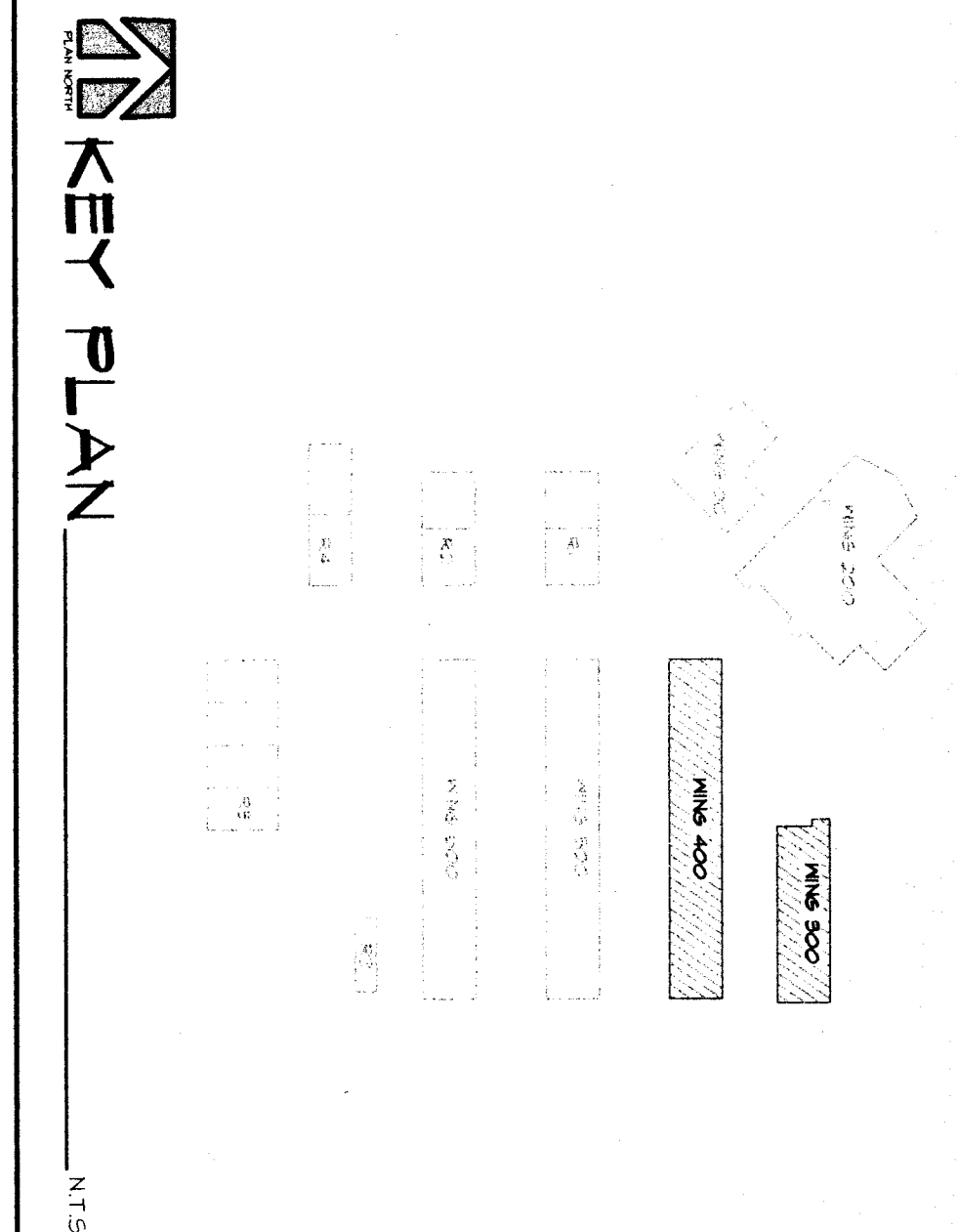
REFLECTED CEILING PLAN MING'S "300" AND "400"

SCALE: 1/4" = 1'-0"



**REFLECTED CEILING LEGEND**

Dashed line indicates ceiling and refer to reflected ceiling plan for locations. See detail (I&J) for MING'S '300' and MING'S '400'.  
 Typical 2' x 4' acoustic tile.  
 Typical 2' x 2' acoustic tile.  
 Typical 2' x 2' acoustic tile with 1/2\"/>



**SCA Architect, Inc.**  
 1301 L Street  
 Bakersfield, CA 93301  
 (805) 327-1632

**LICENSURE ARCHITECT**  
 STATE OF CALIFORNIA  
 No. 12188  
 EXPIRES 12/31/2008  
 Richard L. Gorman, Architect, AIA

REGISTRATION STATE  
 DIV. OF THE STATE ARCHITECT  
 OFFICE OF REGULATION SERVICES  
 APR 03-07/2006  
 FEB 15-06  
 AC 2006 18 03/28  
 DATE RENEW 12/31/08

**RUTH HARDING SCHOOL  
 MODERNIZATION**  
 3201 PICO AVE.  
 FOR  
**BAKERSFIELD CITY SCHOOL DISTRICT**  
 BAKERSFIELD, KERN COUNTY, CALIFORNIA

**REFLECTED  
 CEILING  
 PLAN**

CHECK AND VERIFY ALL DIMENSIONS BEFORE PROCEEDING WITH THE WORK. REPORT DISCREPANCIES TO THE ARCHITECT. ALL CONSTRUCTION SHALL CONFORM TO THE C.B.C.

MARK	DATE	REVISIONS

VOID