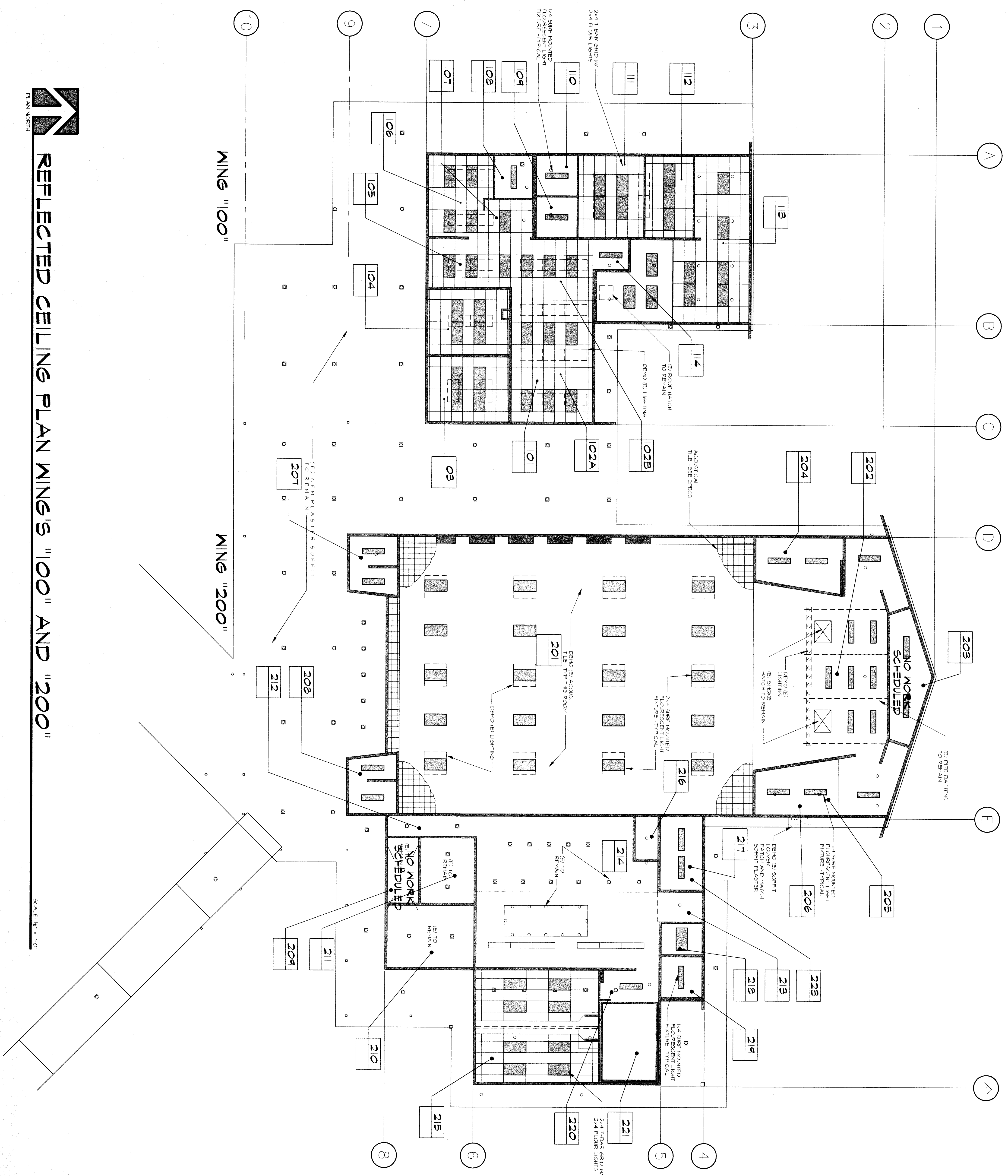
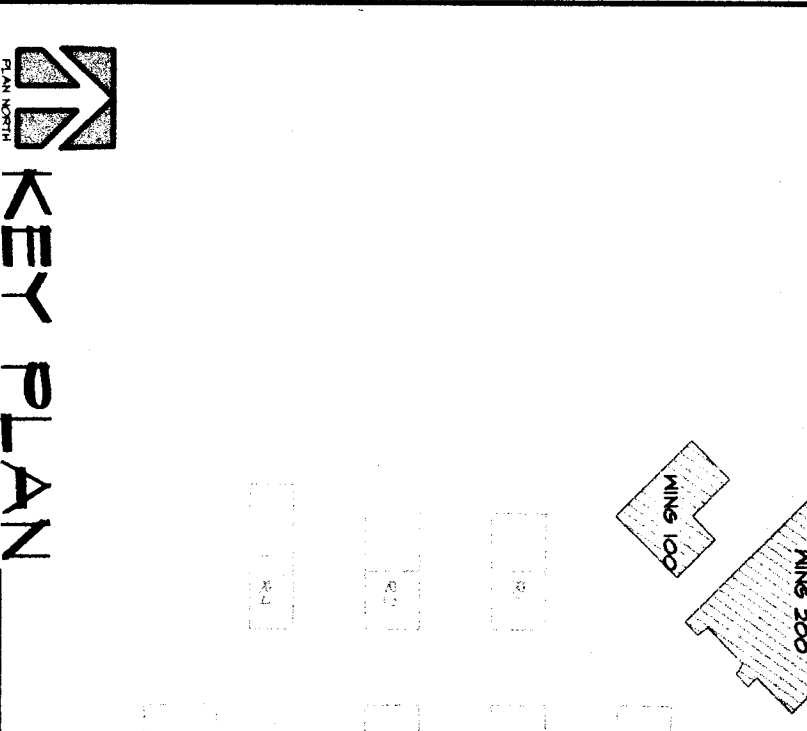
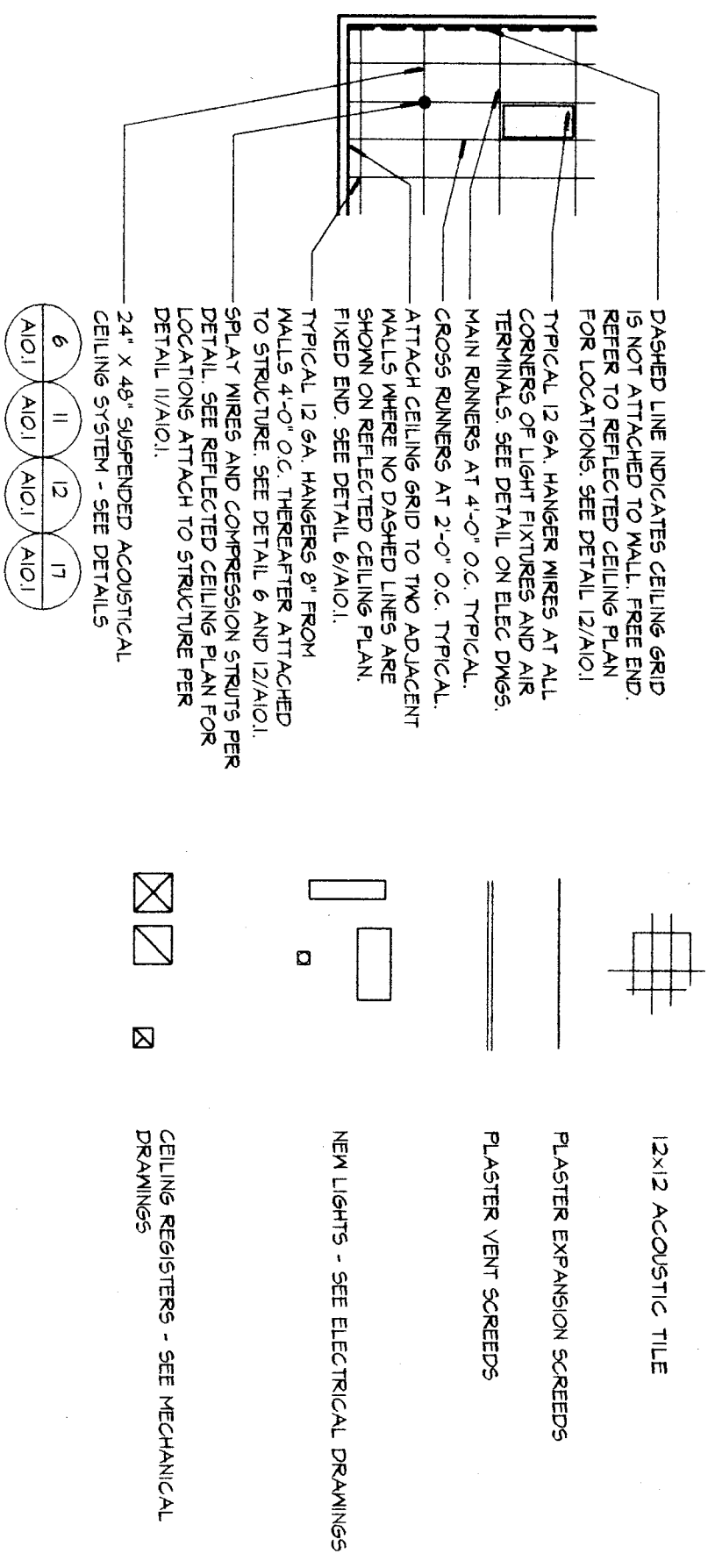


REFLECTED CEILING LEGEND



NOTES

CHECK AND VERIFY ALL DIMENSIONS BEFORE PROCEEDING WITH THE WORK. THE CONTRACTOR SHALL BE RESPONSIBLE FOR VERIFYING ALL DIMENSIONS TO THE ARCHITECT'S CONSTRUCTION SHALL CONFORM TO THE S.B.C.

MARK	DATE	REVISIONS

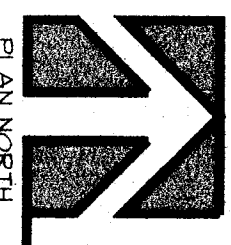
REFLECTED CEILING PLAN

RUTH HARDING SCHOOL
MODERNIZATION
 3201 PICO AVE.
 FOR
BAKERSFIELD CITY SCHOOL DISTRICT
 BAKERSFIELD, KERN COUNTY, CALIFORNIA

ORGANIZATION STAMP
 DIV. OF REVOLUTION SERVICES
 DATE: 03-10-2016
 FILE: 15-6
 DATE: 03-10-2016

REGISTERED ARCHITECT
 STATE OF CALIFORNIA
 No. 15311
 EXPIRES 03/31/17

SCA Architect, Inc.
 1501 E. Street, Suite 1001
 Bakersfield, CA 93311
 (805) 327-1632



REFLECTED CEILING PLAN MING'S "100" AND "200"

SCALE: 1/4" = 1'-0"

VOID