

TYPICAL DEMO NOTES

- 1) DEMO ALL EXTERIOR DOORS & FRAMES.
- 2) COORDINATE DEMO OF PLUMBING, ELECTRICAL, MECHANICAL SYSTEMS WITH WORK SCHEDULED IN THIS CONTRACT DEMO AS REQUIRED.
- 3) DEMO ALL EXTERIOR RESINOUS SURFACES AS NOTED.
- 4) DEMO (E) WORK TILE FLOORING.
- 5) DEMO (E) GLASS PARTITIONS, AND DEMO JOISTS REFER TO SECTION AS NOTED AND REFLECTED ON CLF PLANS FOR ADULT INFORMATION.
- 6) REMOVE (E) PLUMBING AS INDICATED SEE PLUMBING SCHEDULE FOR ADULT INFORMATION. SCHEDULE SEE PROJECT PLANS.

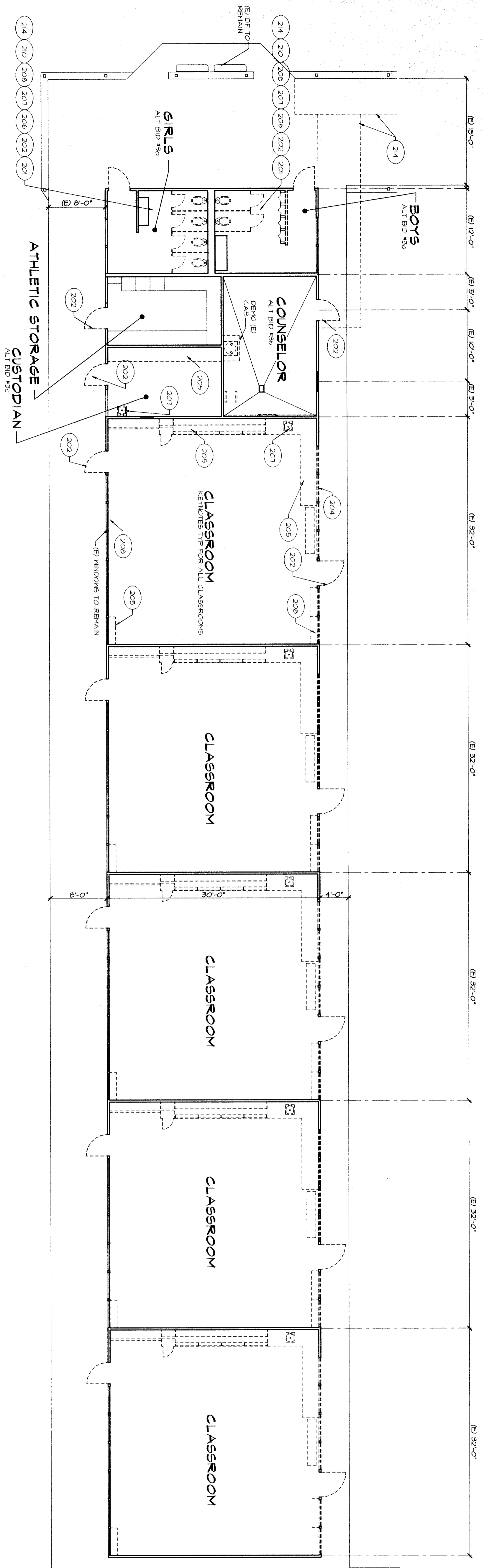
DEMO LEGEND

- ===== DEMO (E) WALL
- (E) WALL TO REMAIN

KEYNOTES

- (201) DEMO (E) WALL
- (202) DEMO (E) DOOR FRAME & THRESHOLD
- (203) DEMO (E) DOOR FRAME & THRESHOLD PACKAGE REMOVE FOR SCHEDULED DOOR AND FRAME
- (204) DEMO (E) WINDOW(S)
- (205) DEMO (E) CABINET(S)
- (206) DEMO (E) TOILET PARTITION(S)
- (207) DEMO (E) PLUMBING FINISHES - SEE PLUMBING SCHEDULE FOR ADULT INFORMATION
- (208) DEMO (E) ACCESSORIES - SEE TOILET PARTITION PARTITIONER, SINK PARTITIONER, HOOKS, GRABS, BOARD, TACK BOARD(S), TOILET PAPER DISPENSER, SEAT COVER DISPENSERS AND CUP DISPENSERS
- (209) DEMO (E) ASPHALT TILE AND BRICK
- (210) DEMO (E) TILE AND BASE
- (211) DEMO (E) ALUM. SIF. FRNT. GLASS, DOORS AND HORN
- (212) DEMO (E) TBL. LAM. AND PLASTER
- (213) DEMO (E) EXHAUST FAN
- (214) SINK/UT AND REMOVE (E) CONC. AS REQD FOR WORK
- (215) PATCH AND MATCH (E) WALL TILE AS REQD WORK INDICATED
- (216) PATCH AND MATCH (E) WALL TILE AS REQD TO MATCH A SCHOOL TRANSITION
- (217) BASE CABINET IN CENTER TOP
- (218) SEE INTERIOR ELEVATIONS
- (219) STORAGE CABINETS
- (220) COMPUTER CABINETS
- (221) BOOK SHELVES
- (222) MAXIMIZE BACK
- (223) INSTRUCTORS CLOSET
- (224) PROJECTION SCREEN
- (225) SOLID PLASTIC PARTITION
- (226) PLUMBING FINISHES - SEE PLUMBING SCHEDULE FOR ADULT INFORMATION
- (227) PATCH AND MATCH CONC. SLAB AS REQUIRED FOR WORK
- (228) WALL INTEL.
- (229) UPPER CABINETS - SEE INTERIOR ELEVATION
- (230)
- (231)
- (232)

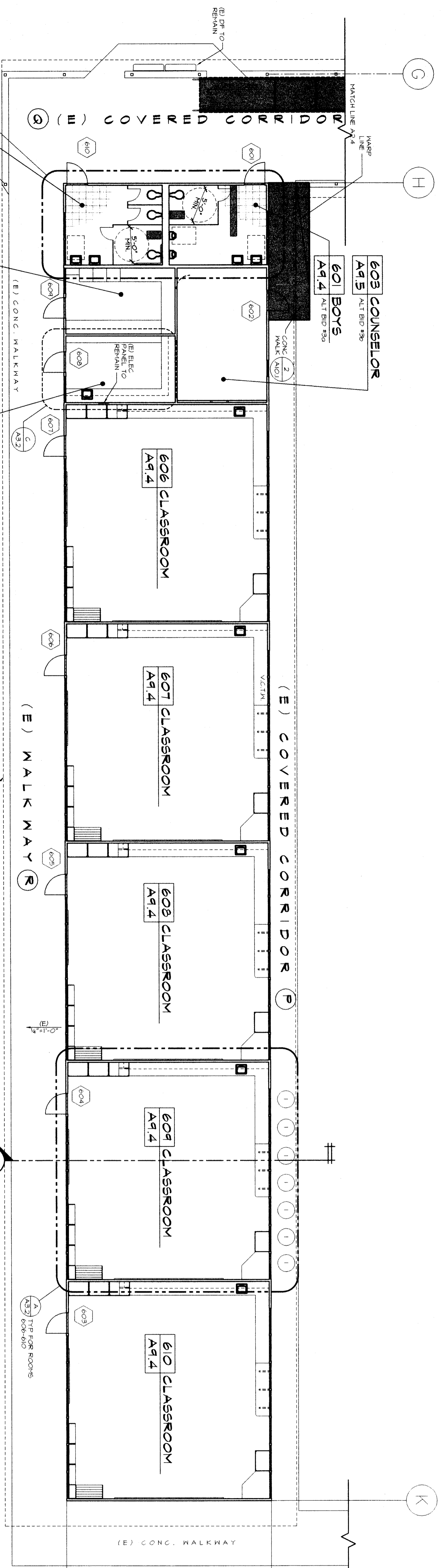
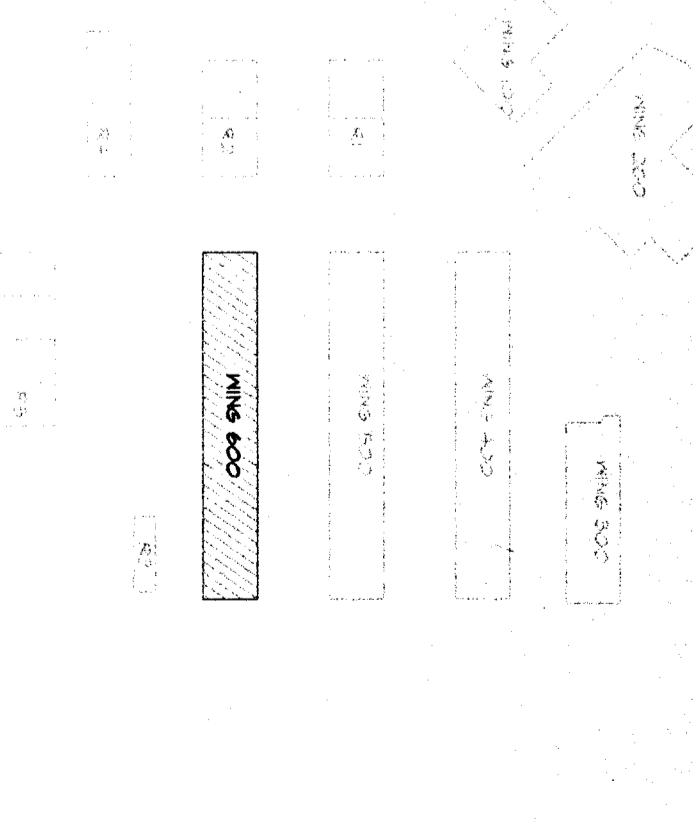
DEMOLITION FLOOR PLAN



ALTERNATES

- ALTERNATE 3 - DEDUCTIVE**
- a. DELETE - WORK AS INDICATED FROM ROOMS NO. 1 AND NO. 2
 - b. DELETE - WORK AS INDICATED AND REMOVED TO INCLUDE ALL WORK ASSOCIATED WITH THE CONTRACT MATERIAL AS SHOWN ON PLANS.
 - c. DELETE - WORK AS INDICATED FROM ROOM NO. 5

KEY PLAN



LEGEND

- ===== 2-IN. WALL CONSTRUCTION
- PATCH AND MATCH (E) CONC. AS REQD FOR WORK
- PATCH AND MATCH (E) CONC. AS REQD FOR WORK AND CAPPING AND/OR REPAIR OF FINISHES
- PATCH AND MATCH (E) CONC. AS REQD FOR WORK AND CAPPING AND/OR REPAIR OF FINISHES

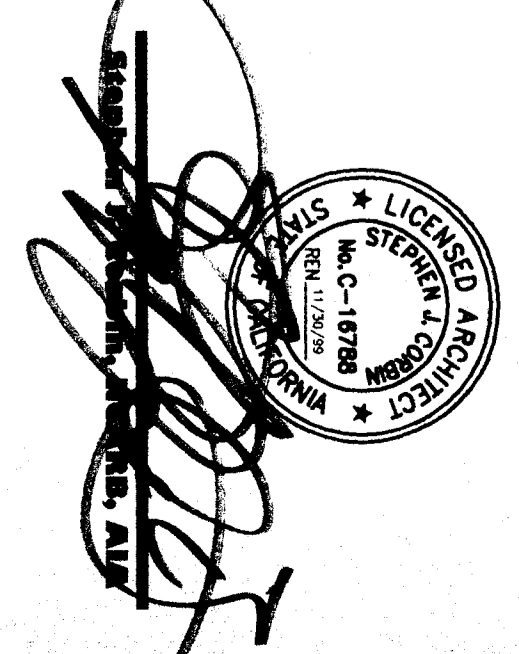
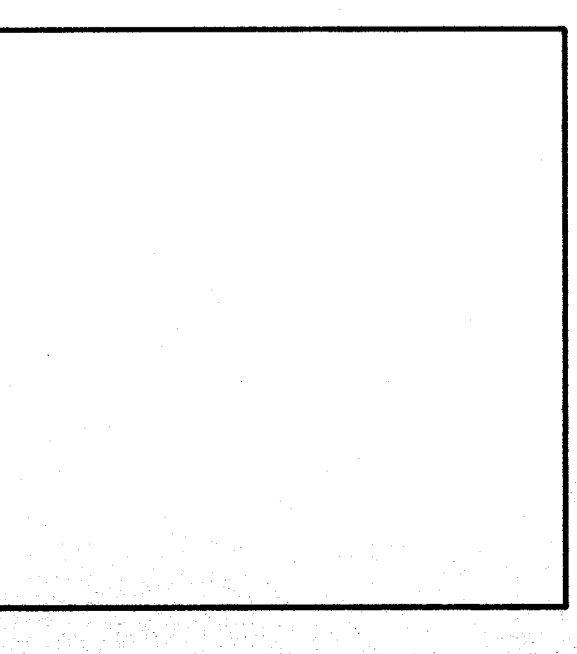
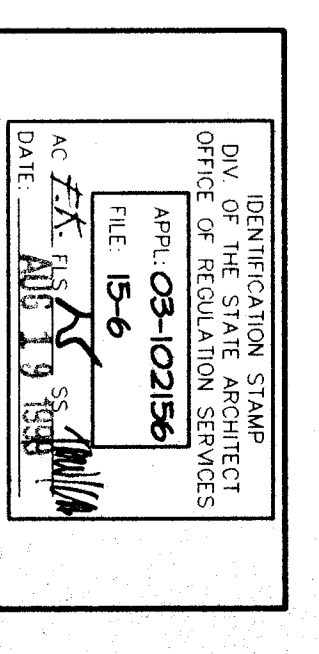
NOTE

ALL CONCRETE SHALL BE A MINIMUM COMPRESSIVE STRENGTH OF 3000 PSI STRUCTURAL AND SEE SPECIFICATIONS FOR ADULT INFORMATION.

MARK	DATE	REVISIONS

**DEMOPLAN/
FLOOR PLAN**

**RUTH HARDING SCHOOL
MODERNIZATION
3201 PICO AVE.
FOR
BAKERSFIELD CITY SCHOOL DISTRICT
BAKERSFIELD, KERN COUNTY, CALIFORNIA**



SJA Architects, Inc.
1301 L Street
Bakersfield, CA 93301
(661) 327-1832

VOID