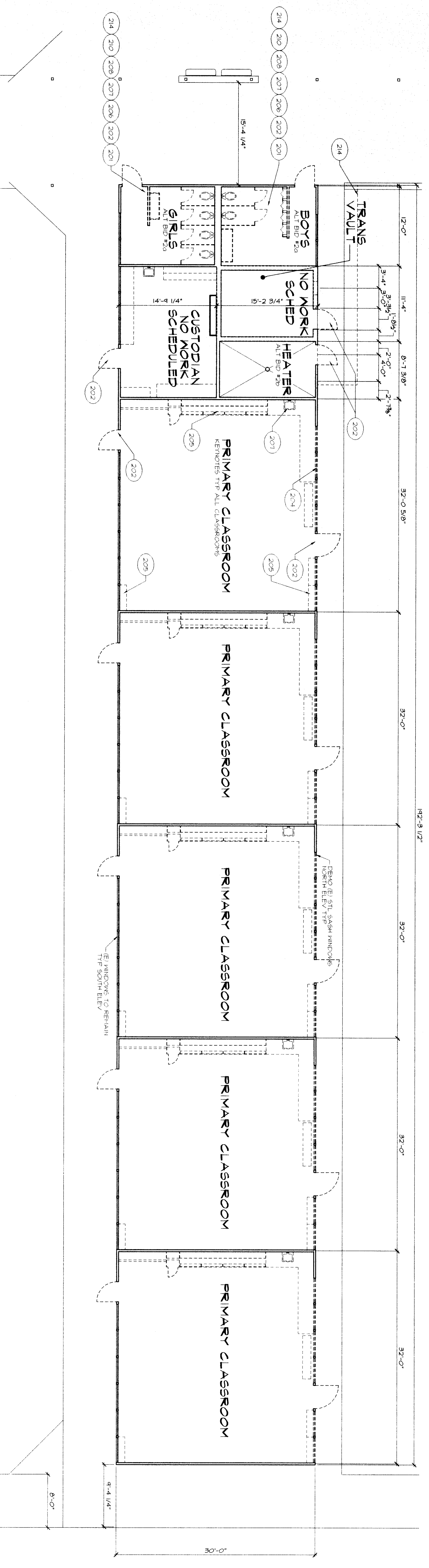
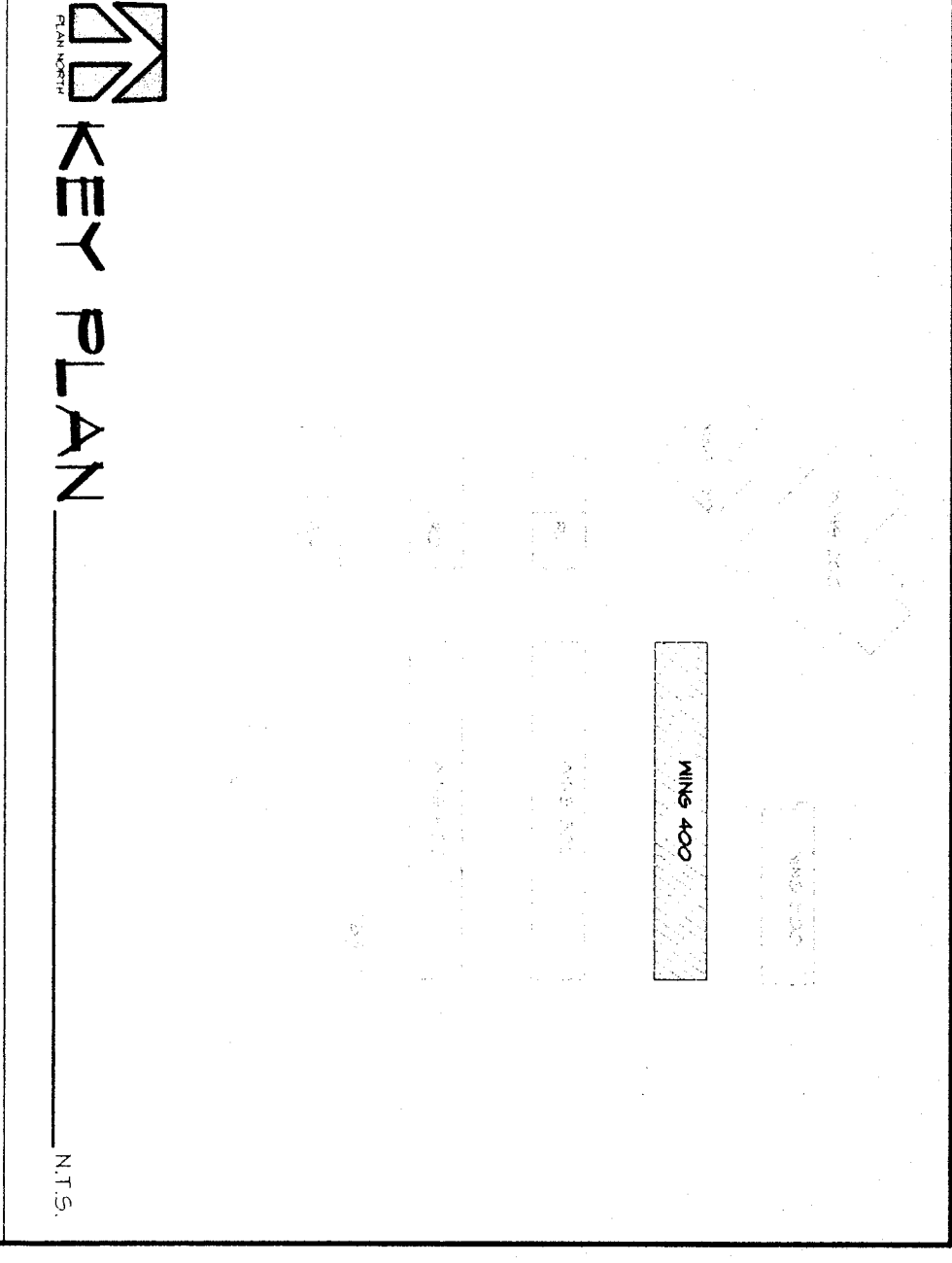
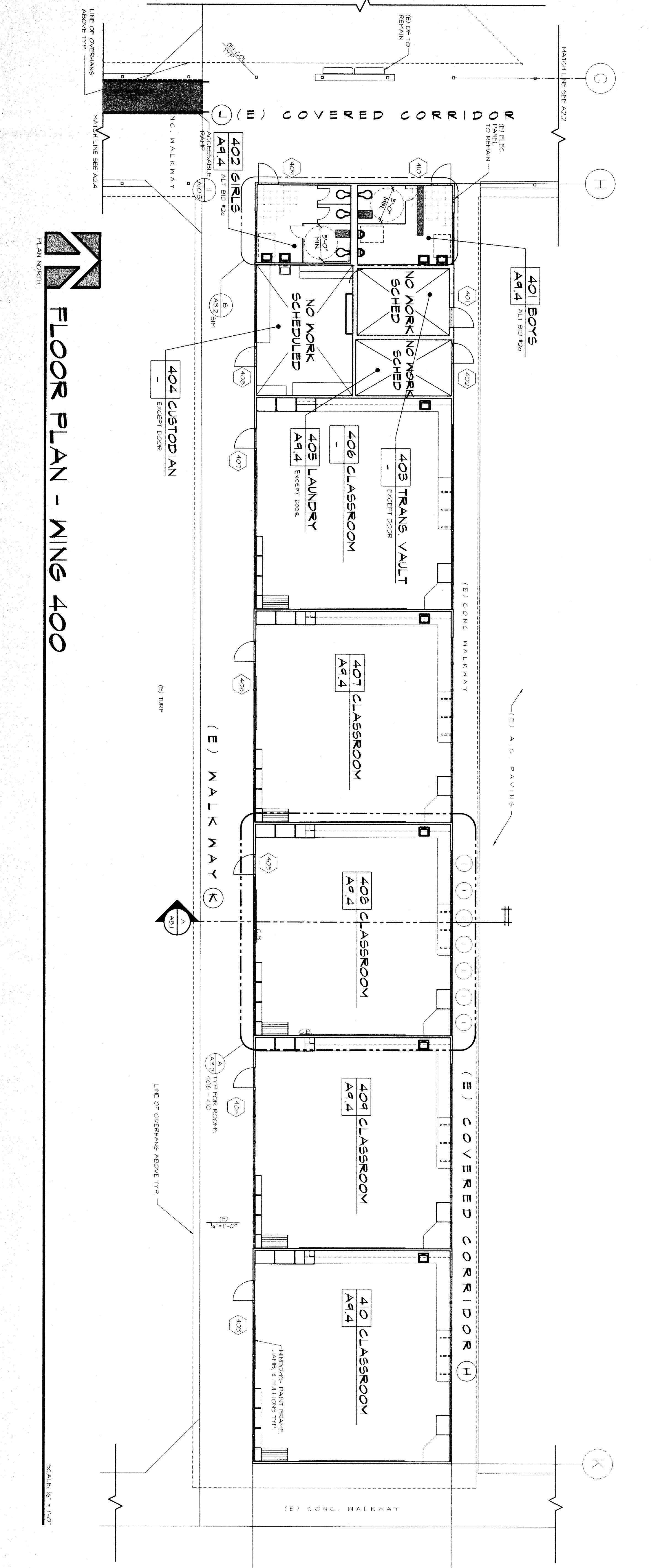


- TYPICAL DEMO NOTES**
- 1) DEMO ALL EXISTING DOORS & FRAMES. SEE DOOR SCHEDULE.
  - 2) COORDINATE DEMO OF PLUMBING ELECTR. & MECH. SYSTEMS WITH WORK SCHEDULED IN THIS DRAWING.
  - 3) DEMO & REMOVE EXISTING CONCRETE SLAB AS NOTED FOR NEW WORK IN RESTROOMS, TEACHERS, & NARSE RN.
  - 4) DEMO EXISTING TILE FLOORS.
  - 5) DEMO EXISTING GLASS PARTITIONS AND CEILING JOISTS FOR ADOPT. INFORMATION. INDICATED DEMO IN THIS DRAWING IS SUBJECT TO FURTHER INVESTIGATION. SEE FUTURE SHEETS FOR ADOPT. INFORMATION.
  - 6) DEMO EXISTING CONCRETE FLOOR SLAB AS NOTED IN THIS DRAWING.

- DEMO LEGEND**
- ===== DEMO (E) HALL  
 ===== DEMO (E) HALL TO REMAIN
- KEYNOTES**
- 200 DEMO (E) HALL
  - 201 DEMO (E) HALL
  - 202 DEMO (E) DOOR FRAME & THRESHOLD
  - 203 DEMO (E) DOOR FRAME & THRESHOLD FINISH
  - 204 DEMO (E) DOOR FRAME & THRESHOLD FINISH
  - 205 DEMO (E) DOOR FRAME & THRESHOLD FINISH
  - 206 DEMO (E) DOOR FRAME & THRESHOLD FINISH
  - 207 DEMO (E) DOOR FRAME & THRESHOLD FINISH
  - 208 DEMO (E) DOOR FRAME & THRESHOLD FINISH
  - 209 DEMO (E) DOOR FRAME & THRESHOLD FINISH
  - 210 DEMO (E) DOOR FRAME & THRESHOLD FINISH
  - 211 DEMO (E) DOOR FRAME & THRESHOLD FINISH
  - 212 DEMO (E) DOOR FRAME & THRESHOLD FINISH
  - 213 DEMO (E) DOOR FRAME & THRESHOLD FINISH
  - 214 DEMO (E) DOOR FRAME & THRESHOLD FINISH
  - 215 DEMO (E) DOOR FRAME & THRESHOLD FINISH
  - 216 DEMO (E) DOOR FRAME & THRESHOLD FINISH
  - 217 DEMO (E) DOOR FRAME & THRESHOLD FINISH
  - 218 DEMO (E) DOOR FRAME & THRESHOLD FINISH
  - 219 DEMO (E) DOOR FRAME & THRESHOLD FINISH
  - 220 DEMO (E) DOOR FRAME & THRESHOLD FINISH
  - 221 DEMO (E) DOOR FRAME & THRESHOLD FINISH
  - 222 DEMO (E) DOOR FRAME & THRESHOLD FINISH
  - 223 DEMO (E) DOOR FRAME & THRESHOLD FINISH
  - 224 DEMO (E) DOOR FRAME & THRESHOLD FINISH
  - 225 DEMO (E) DOOR FRAME & THRESHOLD FINISH
  - 226 DEMO (E) DOOR FRAME & THRESHOLD FINISH
  - 227 DEMO (E) DOOR FRAME & THRESHOLD FINISH
  - 228 DEMO (E) DOOR FRAME & THRESHOLD FINISH
  - 229 DEMO (E) DOOR FRAME & THRESHOLD FINISH
  - 230 DEMO (E) DOOR FRAME & THRESHOLD FINISH
  - 231 DEMO (E) DOOR FRAME & THRESHOLD FINISH
  - 232 DEMO (E) DOOR FRAME & THRESHOLD FINISH
  - 233 DEMO (E) DOOR FRAME & THRESHOLD FINISH
  - 234 DEMO (E) DOOR FRAME & THRESHOLD FINISH
  - 235 DEMO (E) DOOR FRAME & THRESHOLD FINISH
  - 236 DEMO (E) DOOR FRAME & THRESHOLD FINISH
  - 237 DEMO (E) DOOR FRAME & THRESHOLD FINISH
  - 238 DEMO (E) DOOR FRAME & THRESHOLD FINISH
  - 239 DEMO (E) DOOR FRAME & THRESHOLD FINISH
  - 240 DEMO (E) DOOR FRAME & THRESHOLD FINISH
  - 241 DEMO (E) DOOR FRAME & THRESHOLD FINISH
  - 242 DEMO (E) DOOR FRAME & THRESHOLD FINISH
  - 243 DEMO (E) DOOR FRAME & THRESHOLD FINISH
  - 244 DEMO (E) DOOR FRAME & THRESHOLD FINISH
  - 245 DEMO (E) DOOR FRAME & THRESHOLD FINISH
  - 246 DEMO (E) DOOR FRAME & THRESHOLD FINISH
  - 247 DEMO (E) DOOR FRAME & THRESHOLD FINISH
  - 248 DEMO (E) DOOR FRAME & THRESHOLD FINISH
  - 249 DEMO (E) DOOR FRAME & THRESHOLD FINISH
  - 250 DEMO (E) DOOR FRAME & THRESHOLD FINISH
  - 251 DEMO (E) DOOR FRAME & THRESHOLD FINISH
  - 252 DEMO (E) DOOR FRAME & THRESHOLD FINISH
  - 253 DEMO (E) DOOR FRAME & THRESHOLD FINISH
  - 254 DEMO (E) DOOR FRAME & THRESHOLD FINISH
  - 255 DEMO (E) DOOR FRAME & THRESHOLD FINISH
  - 256 DEMO (E) DOOR FRAME & THRESHOLD FINISH
  - 257 DEMO (E) DOOR FRAME & THRESHOLD FINISH
  - 258 DEMO (E) DOOR FRAME & THRESHOLD FINISH
  - 259 DEMO (E) DOOR FRAME & THRESHOLD FINISH
  - 260 DEMO (E) DOOR FRAME & THRESHOLD FINISH
  - 261 DEMO (E) DOOR FRAME & THRESHOLD FINISH
  - 262 DEMO (E) DOOR FRAME & THRESHOLD FINISH
  - 263 DEMO (E) DOOR FRAME & THRESHOLD FINISH
  - 264 DEMO (E) DOOR FRAME & THRESHOLD FINISH
  - 265 DEMO (E) DOOR FRAME & THRESHOLD FINISH
  - 266 DEMO (E) DOOR FRAME & THRESHOLD FINISH
  - 267 DEMO (E) DOOR FRAME & THRESHOLD FINISH
  - 268 DEMO (E) DOOR FRAME & THRESHOLD FINISH
  - 269 DEMO (E) DOOR FRAME & THRESHOLD FINISH
  - 270 DEMO (E) DOOR FRAME & THRESHOLD FINISH
  - 271 DEMO (E) DOOR FRAME & THRESHOLD FINISH
  - 272 DEMO (E) DOOR FRAME & THRESHOLD FINISH
  - 273 DEMO (E) DOOR FRAME & THRESHOLD FINISH
  - 274 DEMO (E) DOOR FRAME & THRESHOLD FINISH
  - 275 DEMO (E) DOOR FRAME & THRESHOLD FINISH
  - 276 DEMO (E) DOOR FRAME & THRESHOLD FINISH
  - 277 DEMO (E) DOOR FRAME & THRESHOLD FINISH
  - 278 DEMO (E) DOOR FRAME & THRESHOLD FINISH
  - 279 DEMO (E) DOOR FRAME & THRESHOLD FINISH
  - 280 DEMO (E) DOOR FRAME & THRESHOLD FINISH
  - 281 DEMO (E) DOOR FRAME & THRESHOLD FINISH
  - 282 DEMO (E) DOOR FRAME & THRESHOLD FINISH
  - 283 DEMO (E) DOOR FRAME & THRESHOLD FINISH
  - 284 DEMO (E) DOOR FRAME & THRESHOLD FINISH
  - 285 DEMO (E) DOOR FRAME & THRESHOLD FINISH
  - 286 DEMO (E) DOOR FRAME & THRESHOLD FINISH
  - 287 DEMO (E) DOOR FRAME & THRESHOLD FINISH
  - 288 DEMO (E) DOOR FRAME & THRESHOLD FINISH
  - 289 DEMO (E) DOOR FRAME & THRESHOLD FINISH
  - 290 DEMO (E) DOOR FRAME & THRESHOLD FINISH
  - 291 DEMO (E) DOOR FRAME & THRESHOLD FINISH
  - 292 DEMO (E) DOOR FRAME & THRESHOLD FINISH
  - 293 DEMO (E) DOOR FRAME & THRESHOLD FINISH
  - 294 DEMO (E) DOOR FRAME & THRESHOLD FINISH
  - 295 DEMO (E) DOOR FRAME & THRESHOLD FINISH
  - 296 DEMO (E) DOOR FRAME & THRESHOLD FINISH
  - 297 DEMO (E) DOOR FRAME & THRESHOLD FINISH
  - 298 DEMO (E) DOOR FRAME & THRESHOLD FINISH
  - 299 DEMO (E) DOOR FRAME & THRESHOLD FINISH
  - 300 DEMO (E) DOOR FRAME & THRESHOLD FINISH



**DEMOLITION FLOOR PLAN**



**ALTERNATES**  
 ALTERNATE 2 - DEDUCTIVE  
 O TELETYPE MARK AS INDICATED FOR ROOMS 401 AND 402

**LEGEND**

===== DEMO (E) HALL  
 ===== DEMO (E) HALL TO REMAIN

200 HALL CONSTRUCTION  
 DEMO (E) HALL TO REMAIN

PATCH AND MATCH EXISTING CONCRETE AS NOTED AFTER REMOVAL OF EXISTING FLOOR FINISHES. DEMO (E) FLOOR FINISHES SHALL BE DEMOLISHED AND REMOVED. DEMO (E) FLOOR FINISHES SHALL BE DEMOLISHED AND REMOVED. DEMO (E) FLOOR FINISHES SHALL BE DEMOLISHED AND REMOVED.

**NOTE**

ALL CONSTRUCTION SHALL BE A MINIMUM OF 1/2" ABOVE FINISH FLOOR. ALL CONSTRUCTION SHALL BE A MINIMUM OF 1/2" ABOVE FINISH FLOOR. ALL CONSTRUCTION SHALL BE A MINIMUM OF 1/2" ABOVE FINISH FLOOR.

MARK	DATE	REVISIONS

**DEMOPLAN/ FLOOR PLAN**

**RUTH HARDING SCHOOL  
 MODERNIZATION  
 3201 PICO AVE.  
 FOR  
 BAKERSFIELD CITY SCHOOL DISTRICT  
 BAKERSFIELD, KERN COUNTY, CALIFORNIA**

GENERATION SKETCH  
 OFFICE OF REVOLUTION SERVICES  
 APRIL 03-102156  
 FILE 15-6  
 DATE 11/13/15

SCA Architect, Inc.  
 1501 L Street, Suite 101  
 Bakersfield, CA 93311  
 (661) 337-1632

