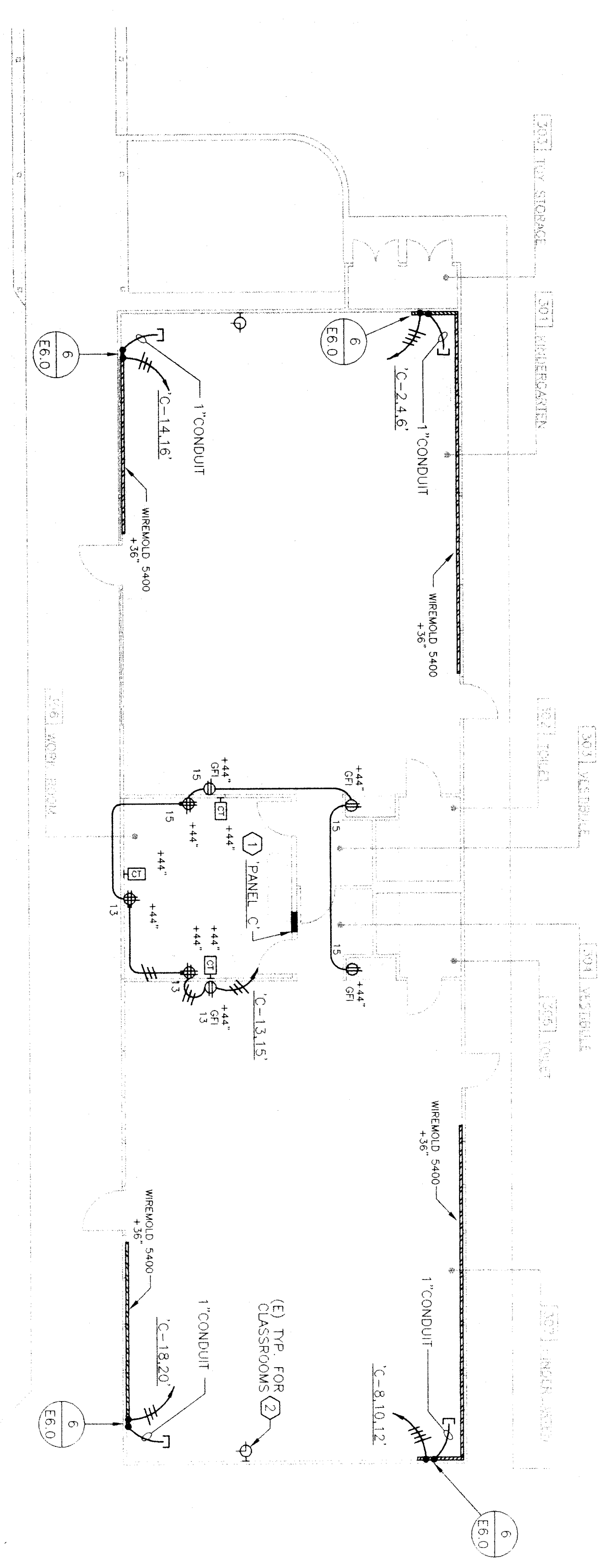
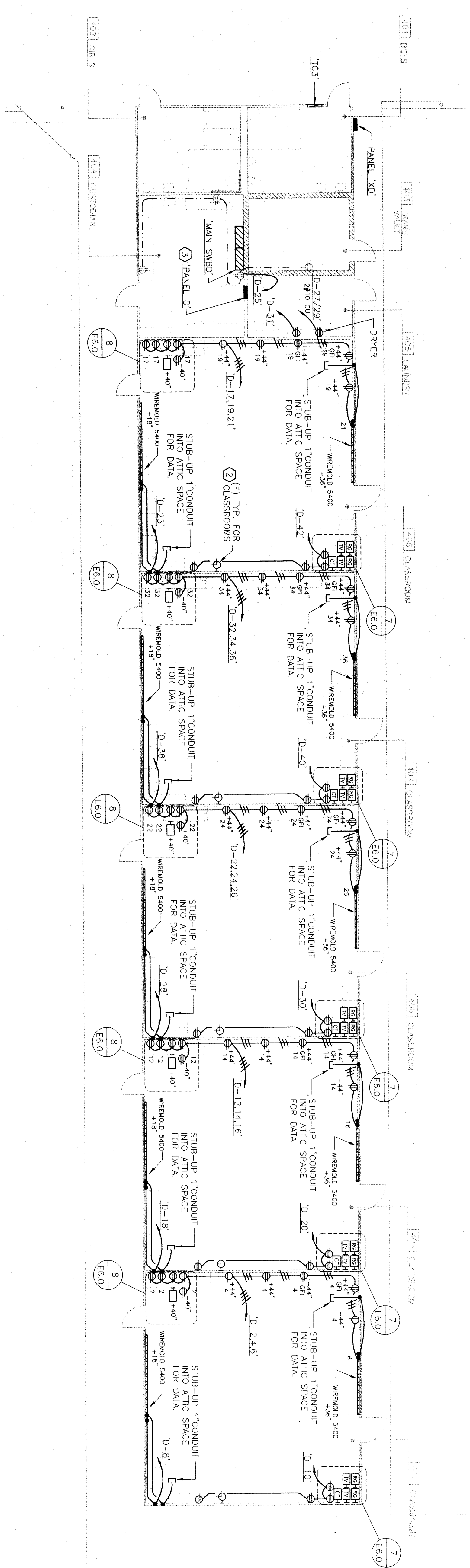
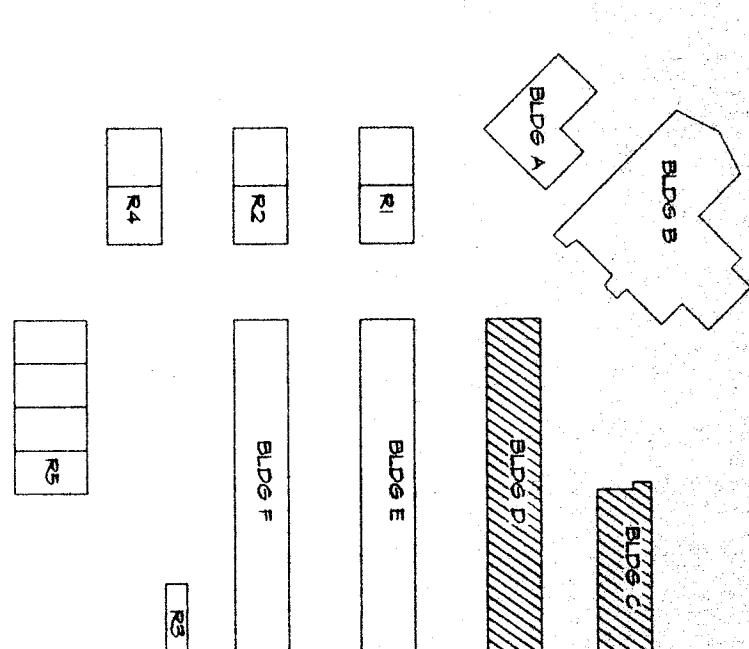


BUILDING 'C' AND BUILDING 'D' POWER PLAN

SCALE: 1/8" = 1'-0"



KEY PLAN



- REFERENCE NOTES**
- ① REPLACE (E) PANEL W/NEW 120/208V-3Ø-4W 100A 42 C/S/INSTALL 100/3 MAIN C.B. CUT & PATCH
 - ② INTERCEPT AND EXTEND (E) CONDUIT/CONDUCTORS TO NEW LOCATION OF CLOCK @ 8'-0" A.F.F. AND CONNECT AS REQUIRED
 - ③ REPLACE (E) PANEL W/NEW 120/208V-3Ø-4W 150A 42 C/S/INSTALL 150/3 MAIN C.B. CUT & PATCH
 - (E) WALLS AS REQUIRED. SEE SINGLE LINE DIAGRAM



SCAPALINO & ASSOCIATES, INC.
 1801 L. STREET
 BAKERSFIELD, CA 93301
 (805) 837-0083

INTERPRET ENGINEER
 ESTABLISHED 1988
 466 W. FARMCO AVE., SUITE 100
 FRESNO, CALIFORNIA 93711
 (209) 432-4400 / (209) 432-4404 fax
 James W. Gordon, Electrical Engineer
 EE #5101

**RUTH HARDING SCHOOL
 MODERNIZATION**
 3201 PICO ST.
 FOR
BAKERSFIELD CITY SCHOOL DISTRICT
 BAKERSFIELD, KERN COUNTY, CALIFORNIA

**BLDG. 'C' & 'D'
 POWER PLAN**

DATE:	DATE:	DATE:
DESIGNED BY:	CHECKED BY:	APPROVED BY:
DRAWN BY:	DATE:	DATE:

VOID

