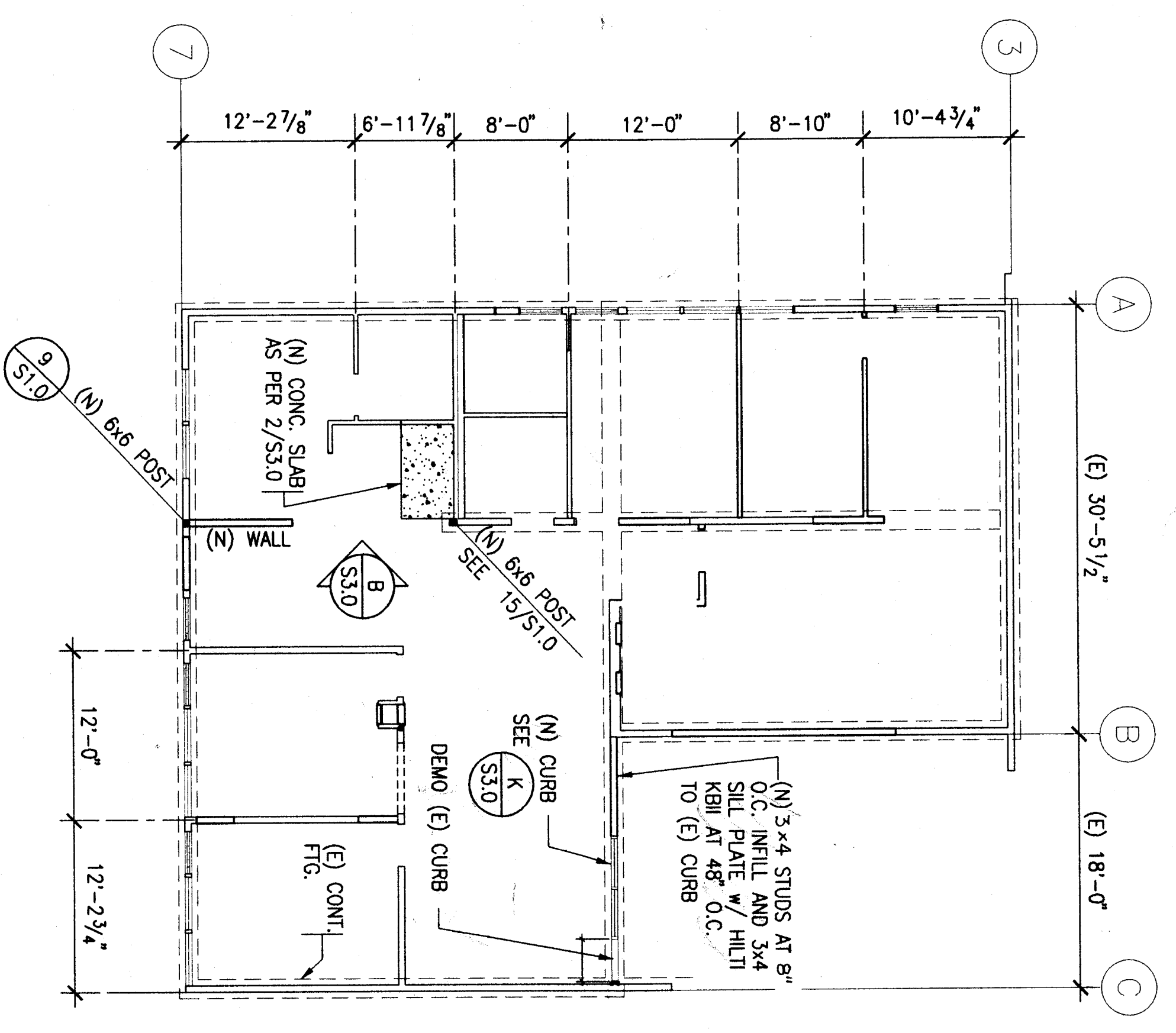
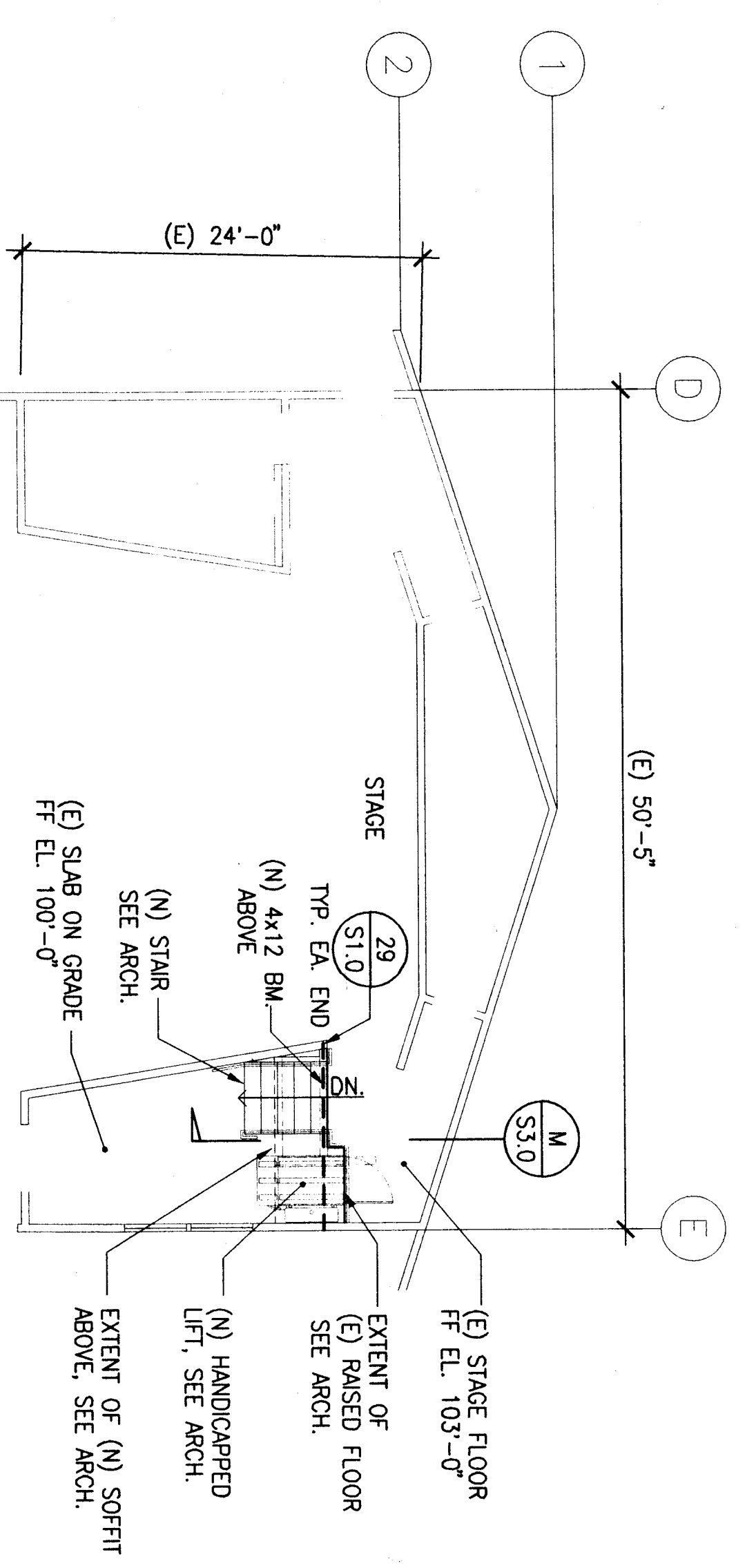
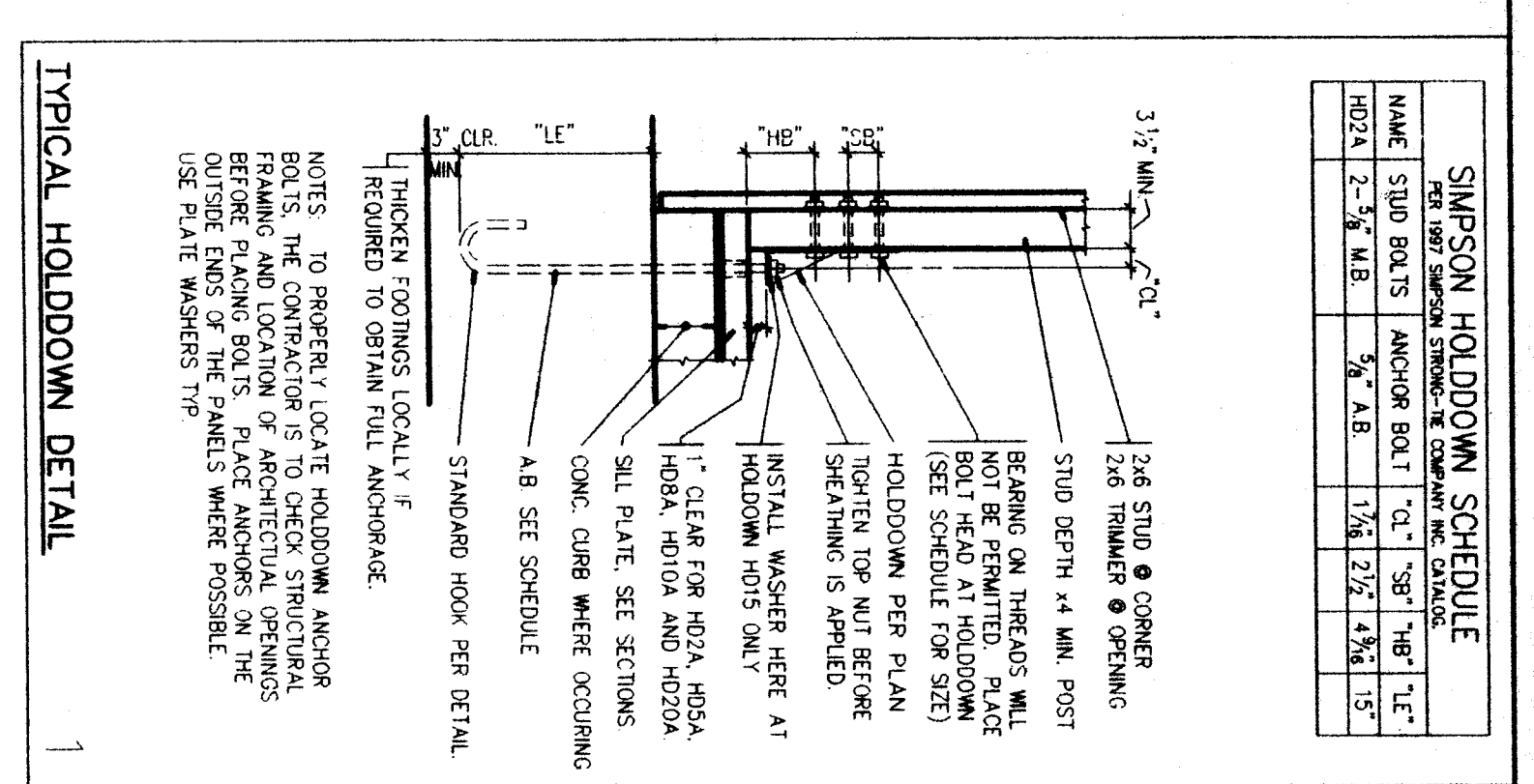


30. Refer to Sheet S210, Partial Plan, Framing Plan, Wing 100 Plan A & B.  
 31. DETAIL WORK INDICATED BETWEEN GRIDS 8 & 9.

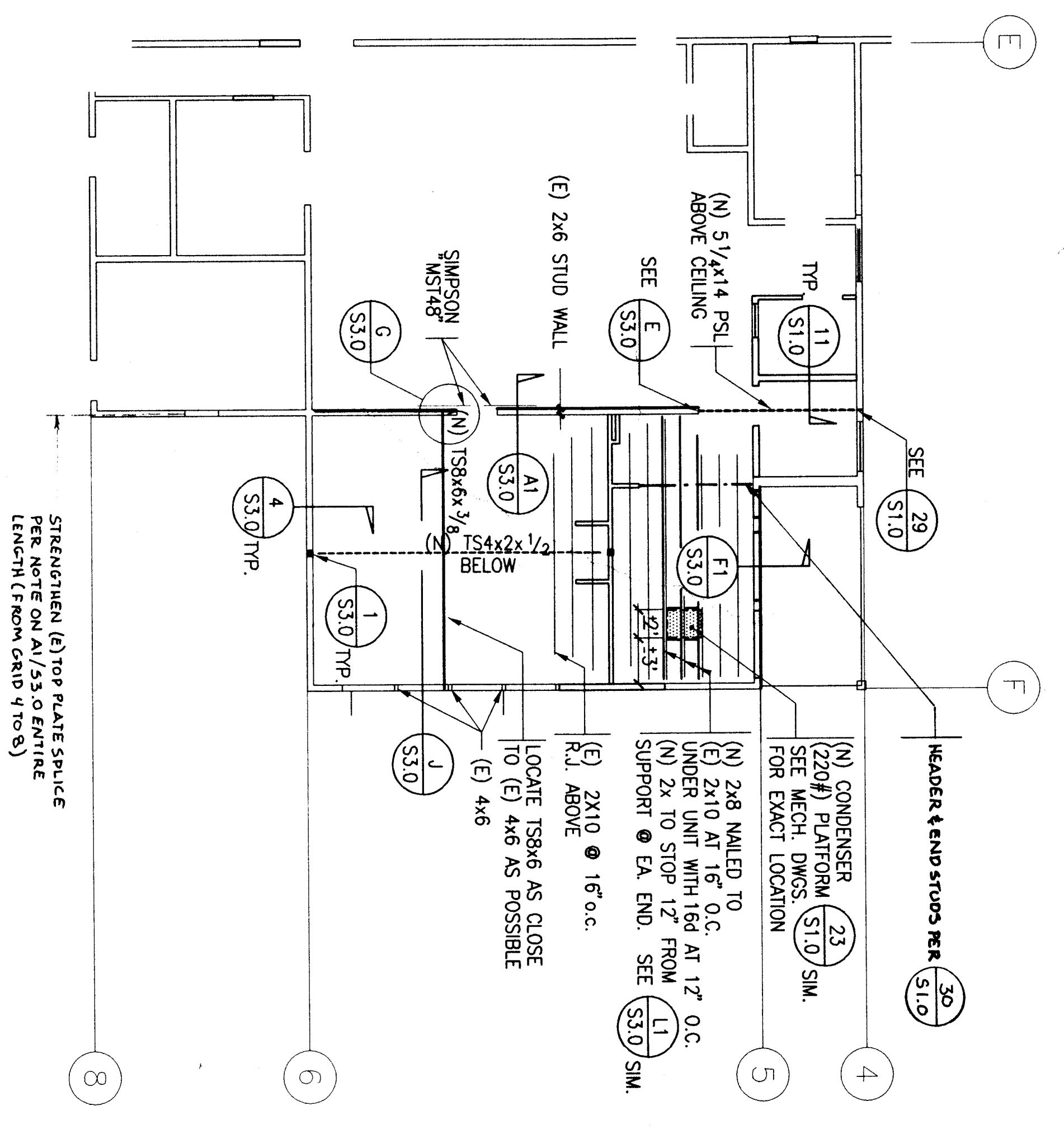
**A PARTIAL FRAMING PLAN-WING 100**  
 SCALE: 1/8" = 1'-0"



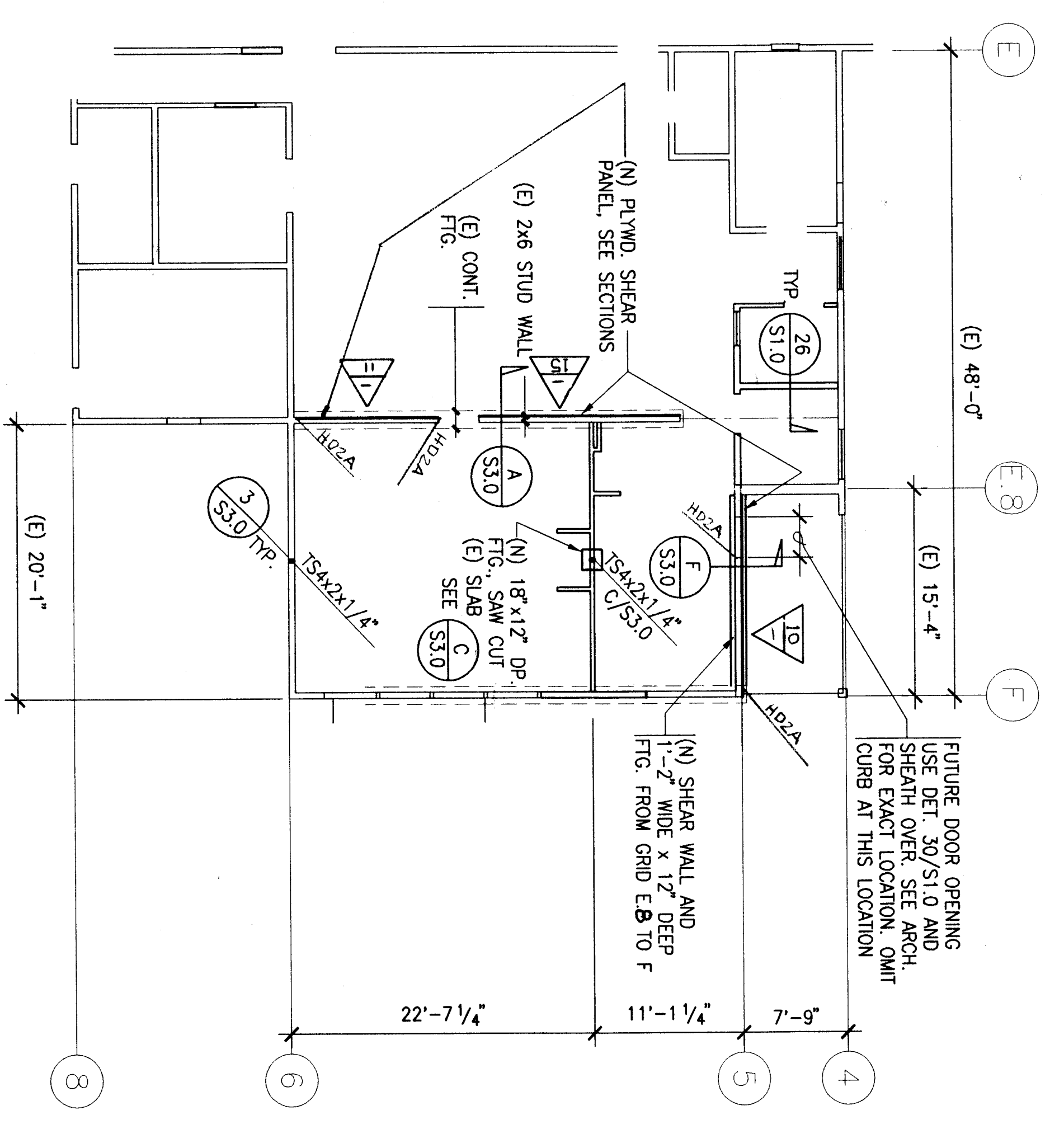
**B FLOOR PLAN-WING 100**  
 SCALE: 1/8" = 1'-0"



**E FLOOR PLAN-WING 200**  
 SCALE: 1/8" = 1'-0"



**C PARTIAL FRAMING PLAN-WING 200**  
 SCALE: 1/8" = 1'-0"



**D PARTIAL FLOOR PLAN-WING 200**  
 SCALE: 1/8" = 1'-0"

MARK	PLYWOOD SHEAR PANEL SCHEDULE	EDGE JOINTS	END JOINTS	HEADWOODS
△	3/4\"/>			

NOTES:  
 1. ADD 5/8\"/>

- NOTES:
- REFER TO GENERAL NOTES AND TYPICAL DETAILS ON S1 THRU S3.
  - FOUNDATION PLAN AND FRAMING PLANS ARE APPROXIMATE ONLY.
  - COORDINATE LOCATION WITH ARCHITECTURAL DRAWINGS IN ACCORDANCE WITH DETAILS (S1-D).
  - INDICATES SIMPSON HOLDOWN PER 1998 SIMPSON CATALOG (S1-D).
  - DESIGNATES PLYWOOD SHEAR PANEL. REFER TO SCHEDULE E ON THIS SHEET.
  - CONTRACTOR SHALL COORDINATE ALL DIMENSIONS SHOWN ON THESE STRUCTURAL DRAWINGS.
  - DESIGN LOADS USED ARE AS FOLLOWS: 20 PSF DL AND 20 PSF LL (REDUCIBLE AS PER 1995 CBC).

**SC**  
**Architect, Inc.**  
 1301 L Street  
 Bakerfield, CA 93301  
 (805) 327-7652

**HL**  
**HILLMAN, HENSON & LUTERBORN**  
 STRUCTURAL ENGINEERS  
 1301 L STREET, SUITE 200  
 BAKERSFIELD, CA 93301  
 (805) 327-7652

COMMUNITY DEVELOPMENT  
 OFFICE OF REGULATION SERVICES  
 APR-03-102/156  
 FILE 15-6  
 DATE 04/24/15

**RUTH HARDING ELEMENTARY**  
**MODERNIZATION**  
 3201 PICO AVE.  
**FOR**  
**BAKERFIELD CITY SCHOOL DISTRICT**  
 BAKERSFIELD, KERN COUNTY, CALIFORNIA

**PARTIAL PLAN**  
**FRAMING PLAN**

CHECK AND VERIFY ALL DIMENSIONS BEFORE PROCEEDING WITH THE WORK. REPORT DISCREPANCIES TO THE ARCHITECT IMMEDIATELY. THE ARCHITECT SHALL CONCUR TO THE C.D.C.

MARK	DATE	REVISIONS
△		
△		
△		

JOB NO. 967  
 DRAWN BY: G. COONTO  
 CHECKED BY: K. HENST  
 DATE: 2/28/09

**2.0**  
 2 OF 3 SHEETS