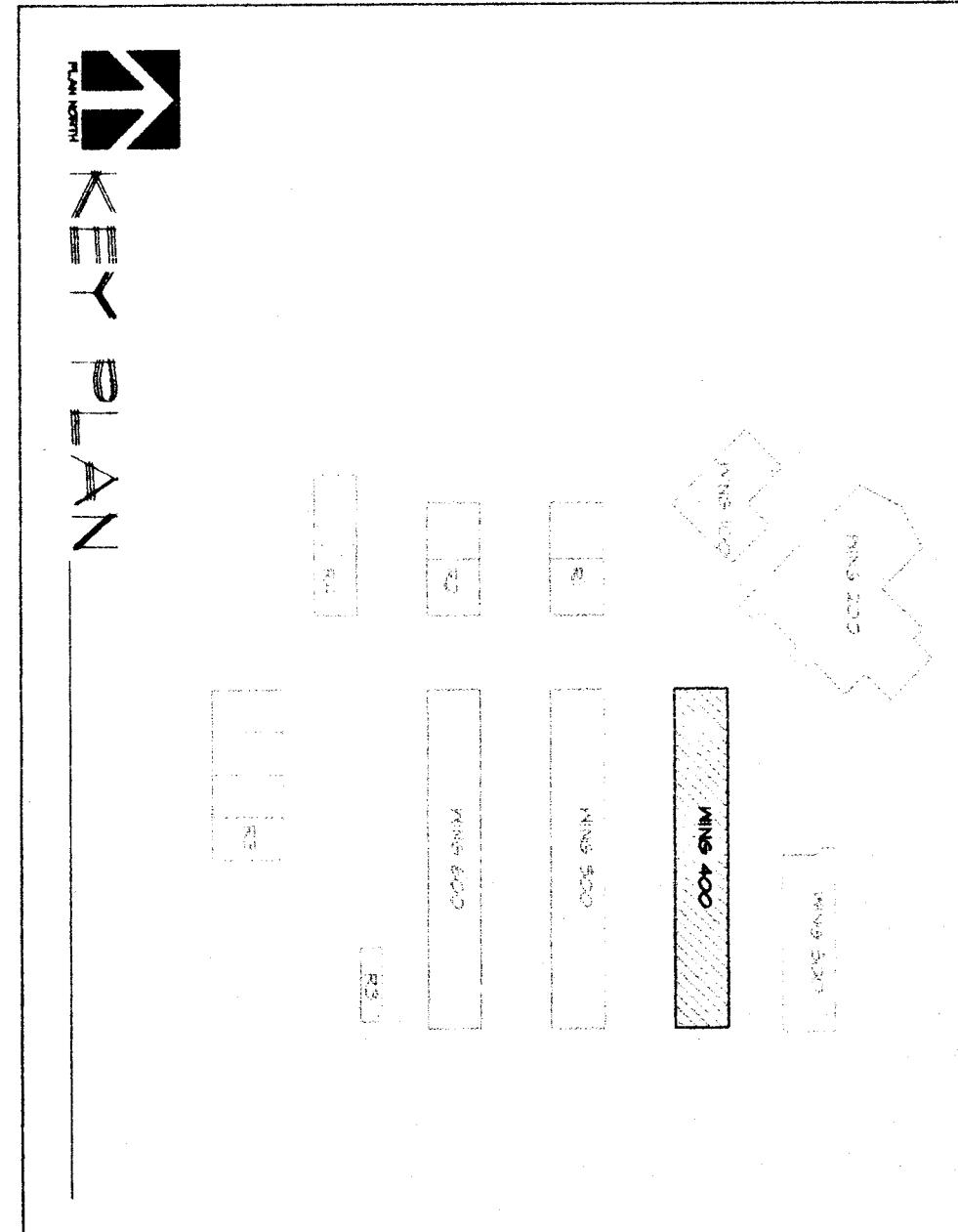
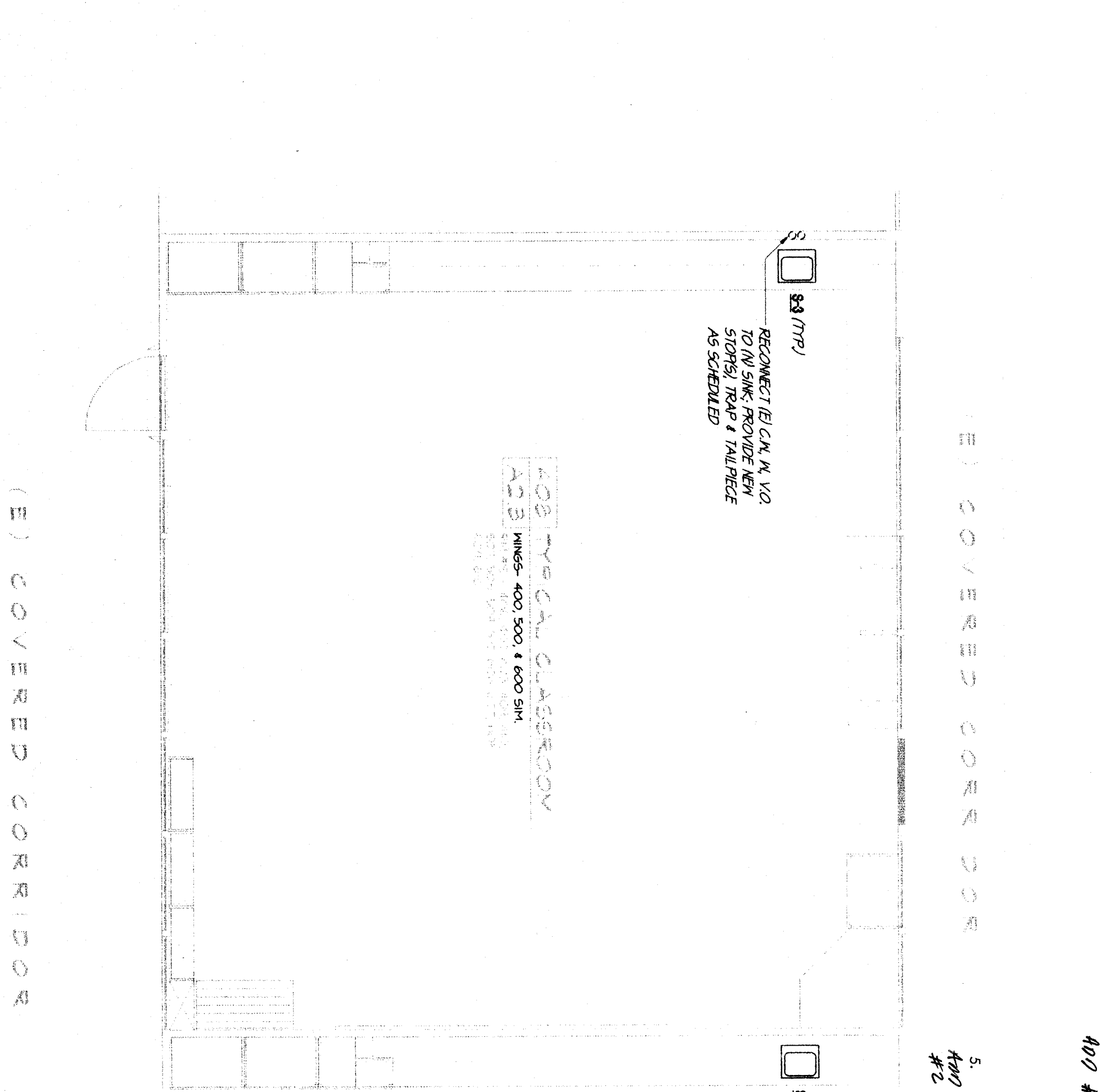
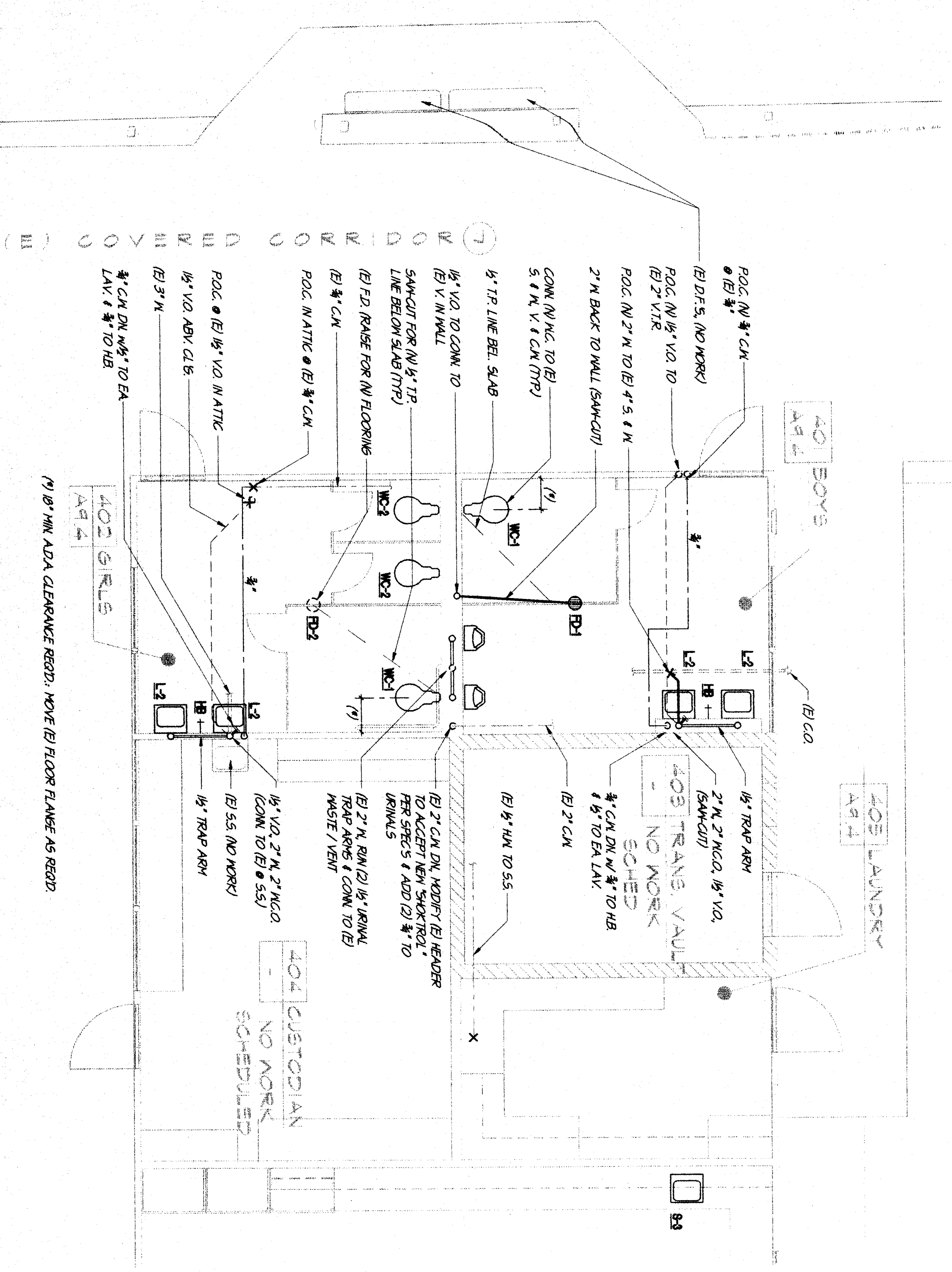


NORTH
 DEMO PLUMBING PLAN (WING-400)
 SCALE 1/4"=1'-0"

NORTH
 DEMO PLUMBING PLAN (WING-400)
 SCALE 1/4"=1'-0" (TYP. FOR WINGS 500 + 600)



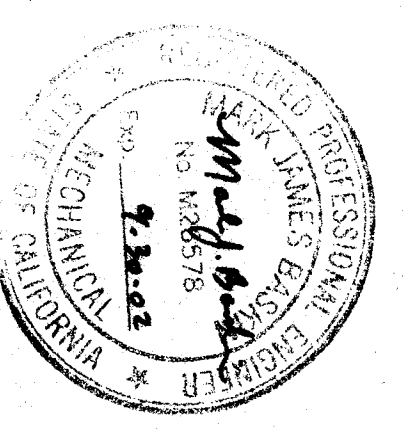
KEY PLAN



- 3.3. Refer to Drawings Sheet P3.3, Plumbing Plan (Classrooms in Wings 400, 500, 600) and 400 #1 a. REVISE
 All typical classroom sink (S-3) to be deleted from scope of work (including demo of existing sink).
- 5. Refer to Drawings Sheet P3.3, Plumbing Plan (Classrooms in Wings 400, 500, 600) and 400 #1 a. REVISE
 Addressed in Item #33
 b. ADD
 All typical classroom sink (S-3) to be open of this scope of work

NORTH
 PLUMBING PLAN (WING-400)
 SCALE 1/4"=1'-0"

NORTH
 PLUMBING PLAN (CLASSROOMS IN WINGS 400, 500, AND 600)
 SCALE 1/4"=1'-0"



SCA
Architect, Inc.
 1301 L Street
 Bakersfield, CA 93301
 (805) 327-1532

#9906
MDC
 MECHANICAL DESIGN CONCERNS
 MECHANICAL ENGINEERING SERVICES
 2101 L Street, Suite 200
 Bakersfield, CA 93301
 PLOTTED 4/21/99

REGISTRATION STATE
 DIV. OF THE STATE ARCHITECT
 OFFICE OF REGULATION SERVICES
 FILE 15-6
 APR. 09-102156
 DATE: 04/23/99

**RUTH HARDING SCHOOL
 MODERNIZATION**
 3201 PICO ST.
 FOR
BAKERSFIELD CITY SCHOOL DISTRICT
 BAKERSFIELD, KERN COUNTY, CALIFORNIA

**WING 400
 PLUMBING
 DEMOLITION
 AND
 FLOOR PLANS**

CHECK AND VERIFY ALL DIMENSIONS
 BEFORE REPORTING DISCREPANCIES
 TO THE ARCHITECT. ALL
 CONSTRUCTION SHALL CONFORM
 TO THE C.B.C.

MARK	DATE	REVISIONS
△		
△		
△		
△		

JOB NO.
 957
 DRAWN BY
 SA
 CHECKED BY
 SA
 DATE
 4/21/99

P

3.3

9 OF 6 SHEETS