

MARK	DATE	REVISIONS
▲		
▲		
▲		

CHECK AND VERIFY ALL DIMENSIONS BEFORE PROCEEDING WITH THE WORK. REPORT DISCREPANCIES TO THE ARCHITECT. ALL CONSTRUCTION SHALL CONFORM TO THE S.C.S. PLAN.

KEY PLAN

WING 100
WING 200
WING 300
WING 400
WING 500
WING 600

RUTH HARDING SCHOOL
 MODERNIZATION
 3201 PICO AVE.
 FOR
 BAKERSFIELD CITY SCHOOL DISTRICT
 BAKERSFIELD, KERN COUNTY, CALIFORNIA

REGISTRATION STAMP
 DIV. OF THE STATE ARCHITECTS
 License No. 03-102156
 Exp. 12-31-15
 Date: 08/19/09 \$5
 KC 156 / 15 / 1592 \$5
 P.N. N/A

ARCHITECT
S
 INC.

3201 L STREET
 BAKERSFIELD, CA 93301
 PH: (661) 327-6332
 FAX: (661) 327-2329

REGISTERED ARCHITECT
STEPHEN J. GARDNER, AIA
 ADDENDUM #01

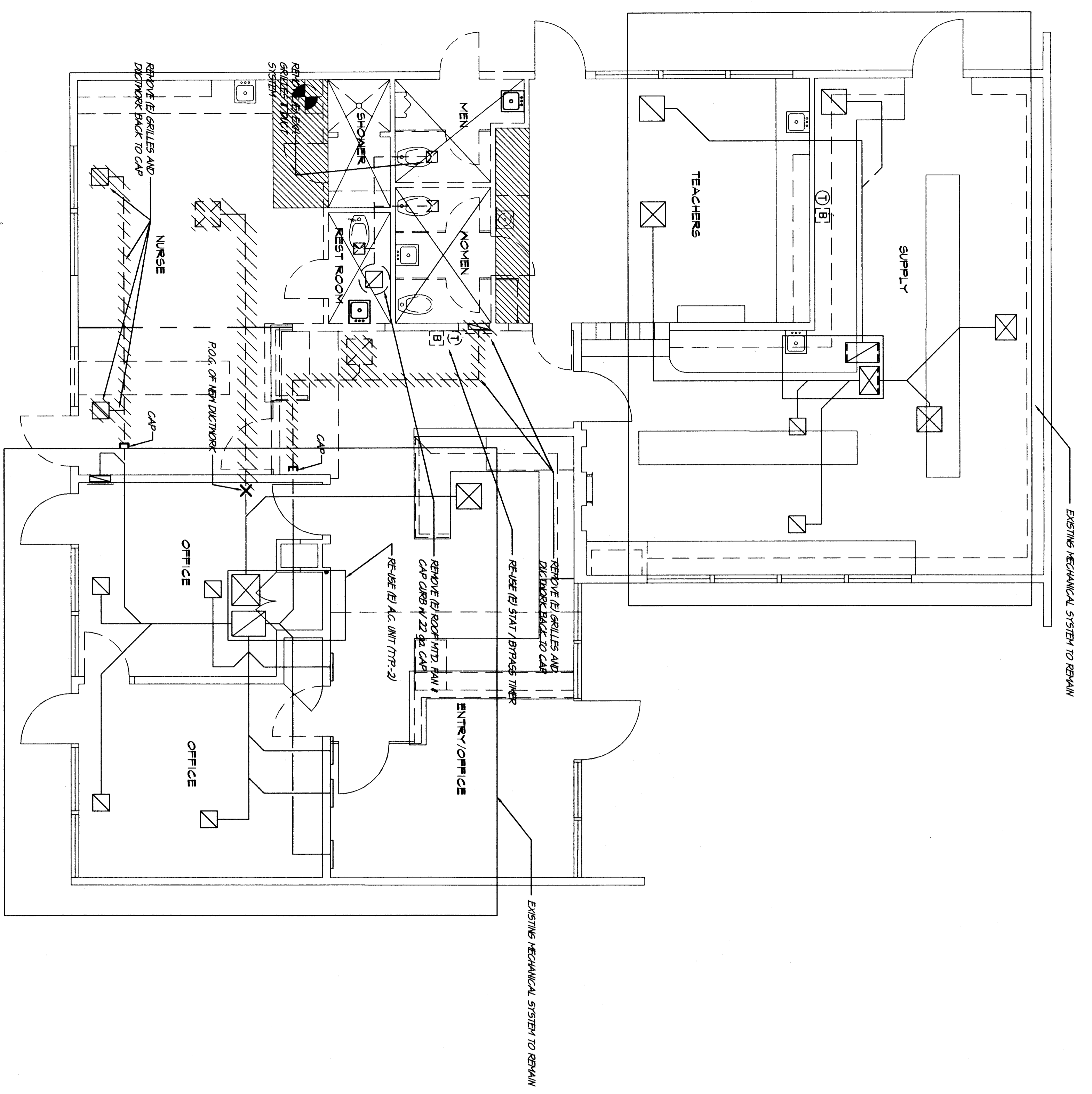
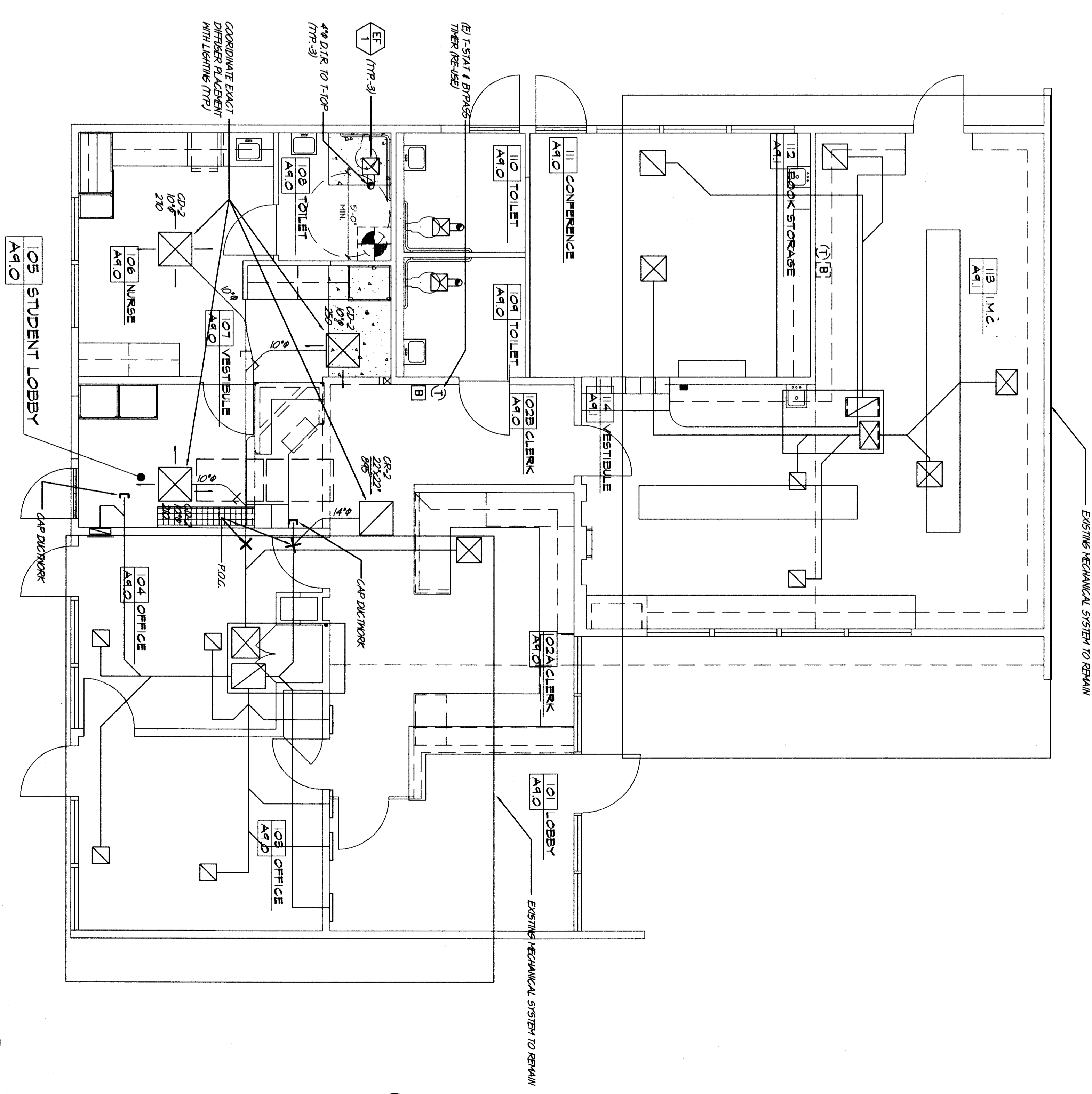
RUTH HARDING SCHOOL
 MODERNIZATION
 BAKERSFIELD CITY SCHOOL DISTRICT
 BAKERSFIELD, CALIFORNIA

DATE: 08/19/09
 SHEET NO. 19

WING - 100
MECHANICAL
DEMOLITION
AND FLOOR
PLANS

JOB NO. 957.1
 DRAWN: S.A.
 CHECKED: S.A.
 DATE: 08/19/03

M
3.0
 1 OF 3 SHEETS



MECHANICAL FLOOR PLAN (WING-100)
 SCALE: 1/4"=1'-0"

MECHANICAL FLOOR PLAN (WING-100)
 SCALE: 1/4"=1'-0"

