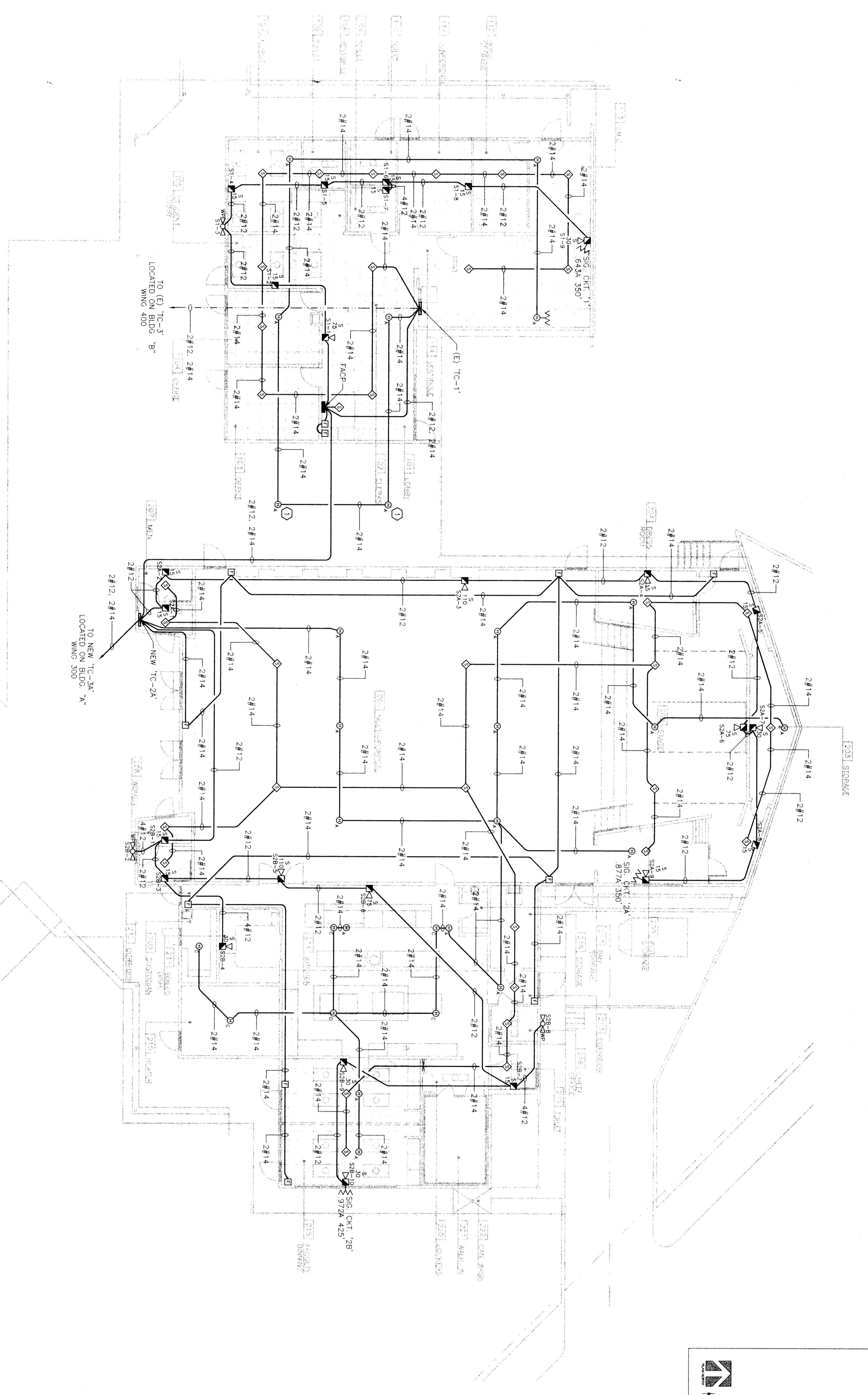
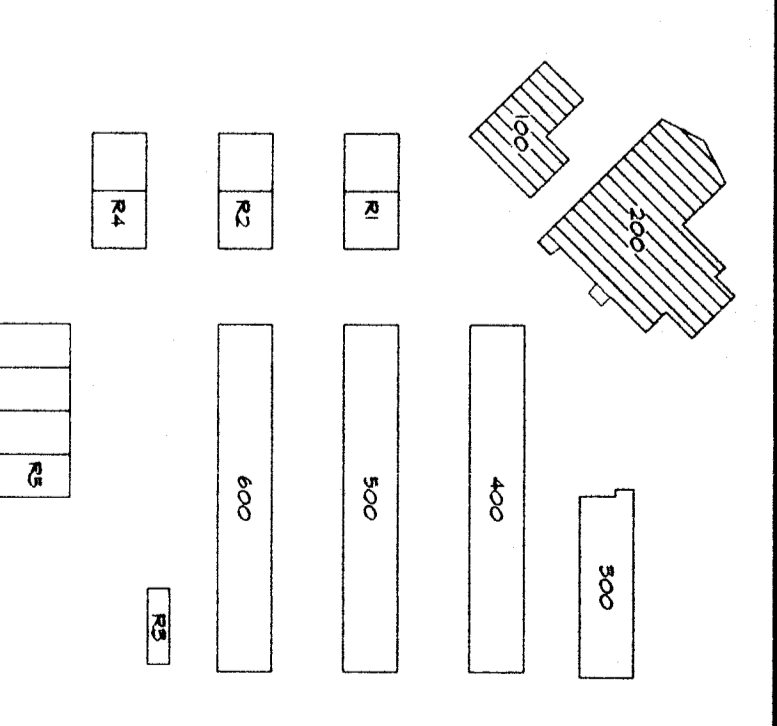


BUILDING "100" AND BUILDING "200" FIRE ALARM PLAN

SCALE: 1/8" = 1'-0"



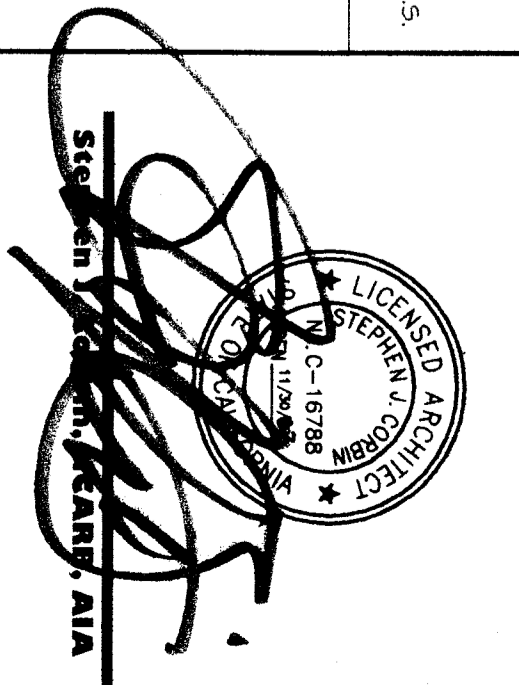
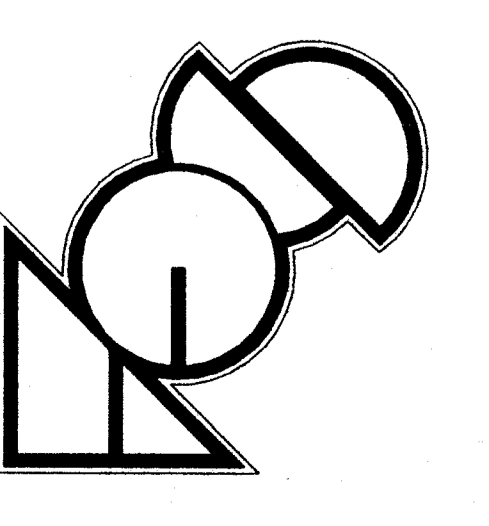
KEY PLAN



REFERENCE NOTES
① PROVIDE ACCESS PANEL AT DETECTION PANEL

N.T.S.

SCA Architects, Inc.
13011 Street
Bakersfield, CA 93301
(805) 327-1633



INTERSTATE ENGINEERS
ESTABLISHED 1988
460 W. Fairbuck Ave., Suite 104
Bakersfield, California 93311
(209) 453-4890 / (209) 452-4894 fax
James W. Gordon, Electrical Engineer
E.E. #5101

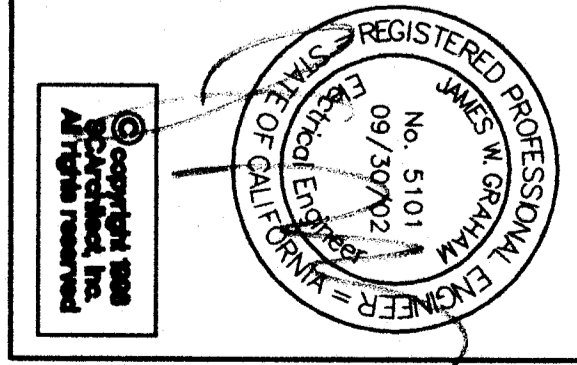
CONSTRUCTION STANDARDS
DIV. OF THE STATE ARCHITECT
OFFICE OF REGULATION SERVICES
APPLIC. 03-102105
FILE 15-6
DATE: 05-15-16

**RUTH HARDING SCHOOL
MODERNIZATION**
3201 PICO ST.
FOR
BAKERSFIELD CITY SCHOOL DISTRICT
BAKERSFIELD, KERN COUNTY, CALIFORNIA

**BUILDING
"100" & "200"
FIRE ALARM
PLAN**

**CHECK AND VERIFY ALL DIMENSIONS
BEFORE PROCEEDING WITH THE
CONSTRUCTION. ALL DIMENSIONS
TO THE ARCHITECT. ALL MATERIALS
AND CONSTRUCTION SHALL CONFORM
TO THE C.S.A.A.**

MARK	DATE	REVISIONS
△	8-6-03	ENTIRE SHEET
△		
△		



F08 NO. **967**
DRAWN: **CA**
CHECKED: **DP/D**
DATE: **04-27-09**

E
5.2
OF 5 SHEETS