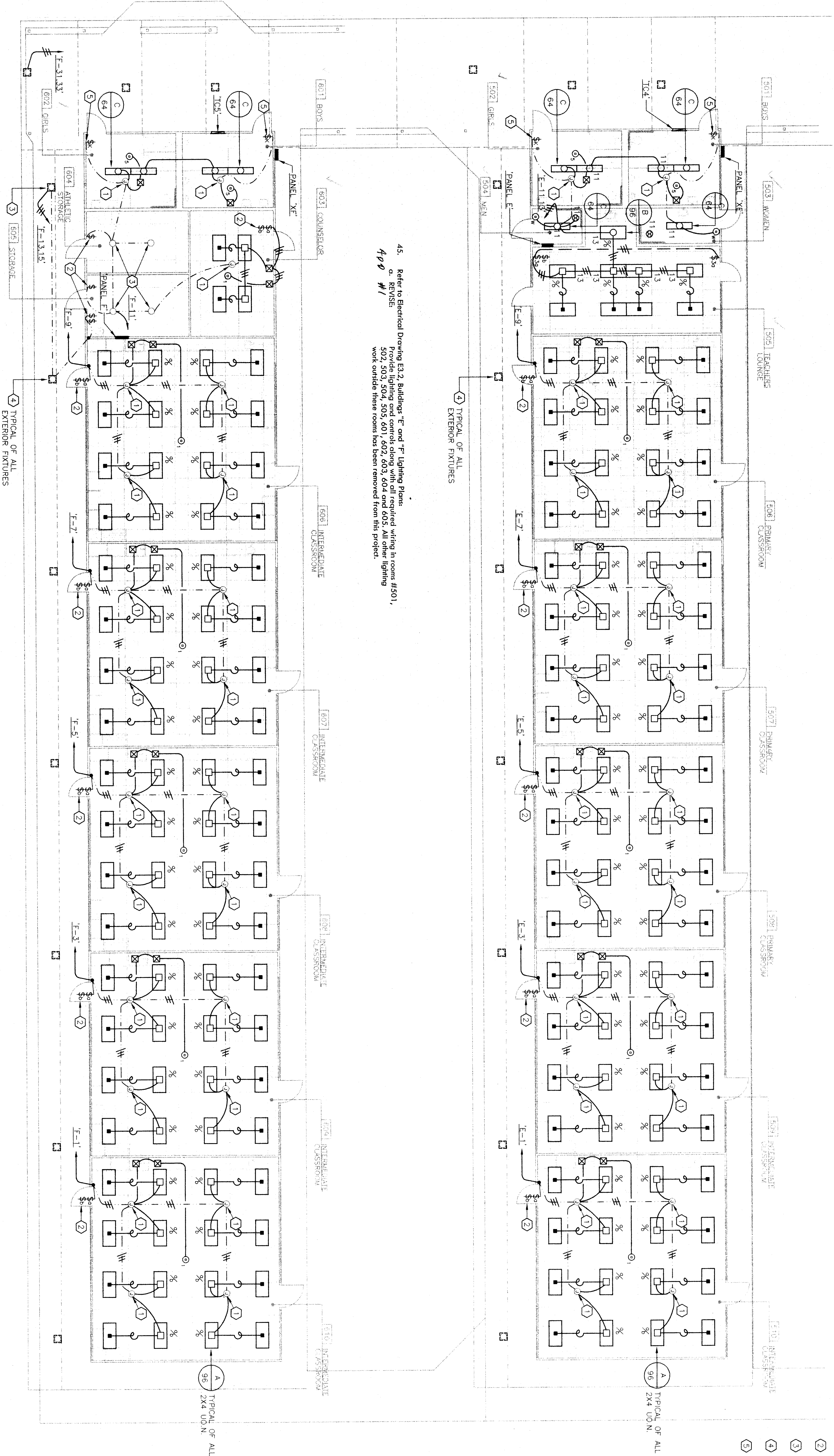
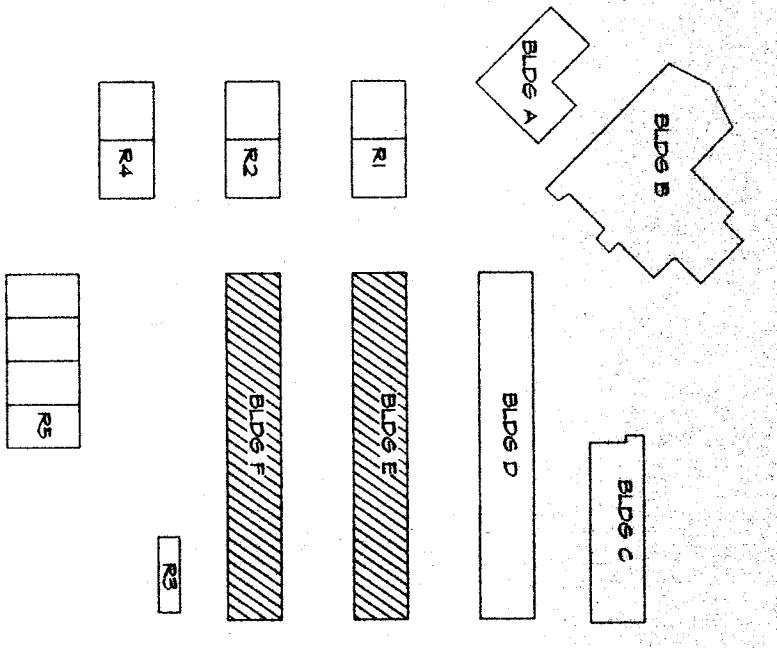


BUILDING 'E' AND BUILDING 'F' LIGHTING PLAN

SCALE: 1/8" = 1'-0"



KEY PLAN



- REFERENCE NOTES**
- 1 REUSE (E) CONDUIT/BOXES RUN NEW WIRE AS SHOWN.
 - 2 REPLACE (E) SWITCH AND RECONNECT AS REQUIRED.
 - 3 EXISTING FIXTURE TO REMAIN, RECONNECT TO NEW CIRCUIT AS REQUIRED.
 - 4 EXTERIOR LIGHT FIXTURE TO REMAIN, (NO CHANGE).
 - 5 REPLACE EXISTING KEY SWITCH WITH NEW, RECONNECT TO NEW CIRCUIT AS REQUIRED.

N.T.S.

SCARFTHORPE
1801 L STREET
BAKERSFIELD, CA 93301
(805) 837-0083

PROFESSIONAL ENGINEER
James W. Carlson, Electrical Engineer
EE #5101
446 W. Edison Ave., Ste. 106
Fresno, California 93711
(209) 432-4400 / (209) 432-4404 fax

ESTABLISHED 1988
DIV. OF THE STATE ARCHITECTS
NO. 03-102152
DATE 15-6
FILE 15-6
K.C. 225
A.M. 1-8
S.M. 8

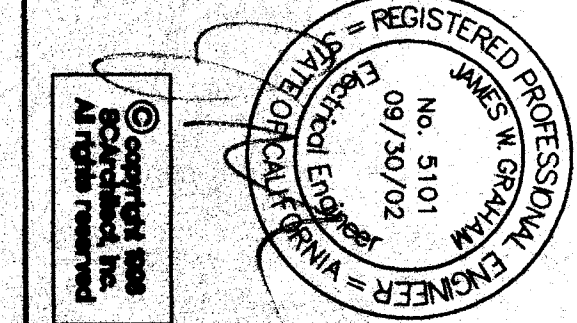
**RUTH HARDING SCHOOL
MODERNIZATION
3201 PICO ST.
FOR
BAKERSFIELD CITY SCHOOL DISTRICT
BAKERSFIELD, KERN COUNTY, CALIFORNIA**

**BLDG. 'E' & 'F'
LIGHTING PLAN**

DATE: 04-27-89

8 OF 14 SHEETS

3.2



957
8 OF 14 SHEETS