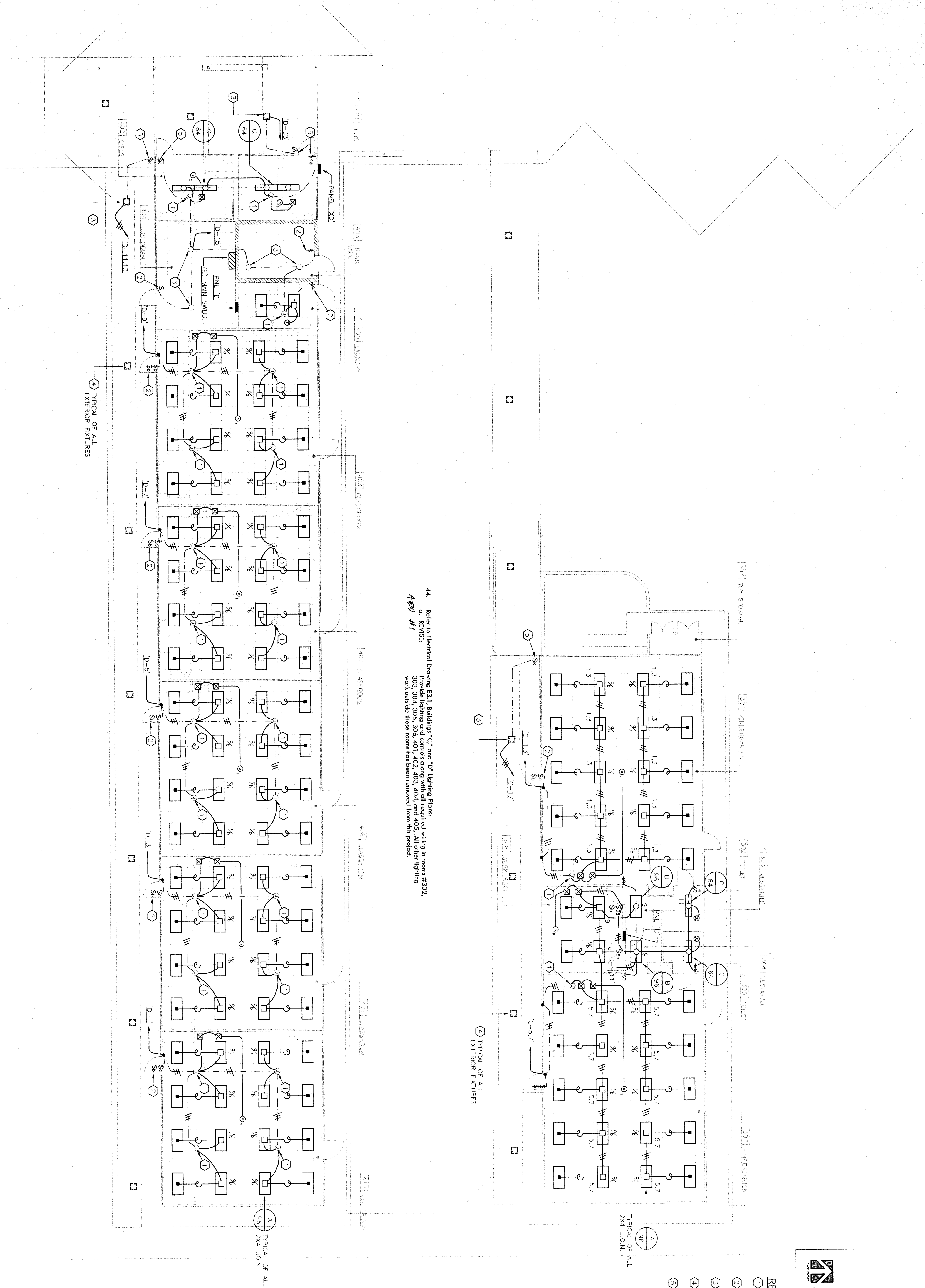


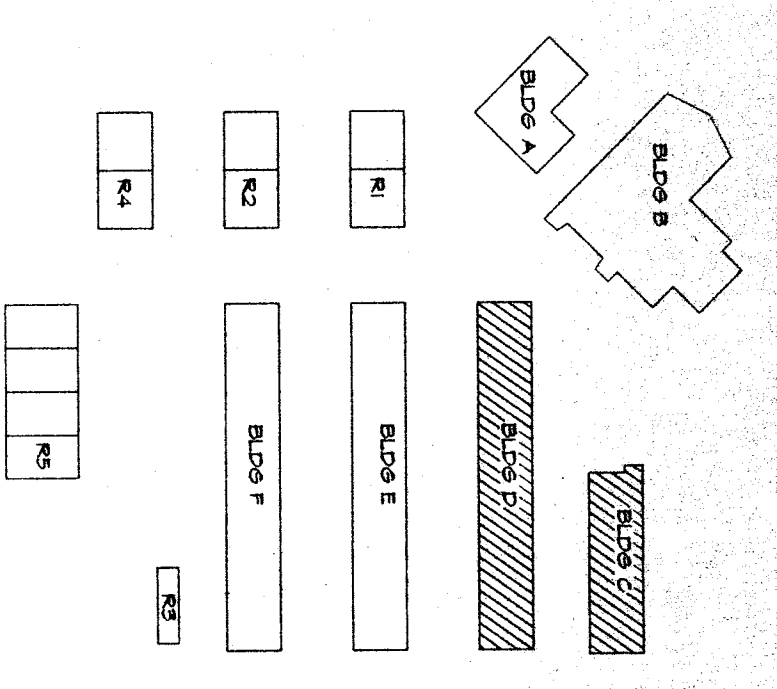
**BUILDING 'C' AND BUILDING 'D' POWER PLAN**

SCALE: 1/8" = 1'-0"



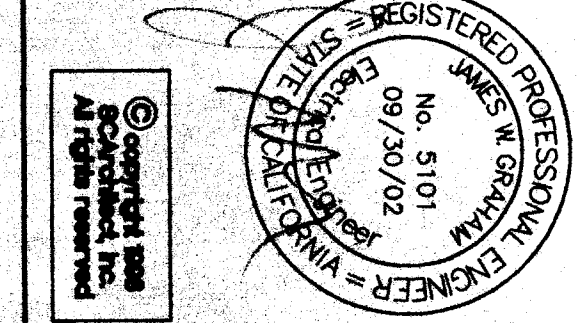
44. Refer to Electrical Drawing E3.1, Buildings 'C' and 'D' Lighting Plan, for details of lighting wiring in rooms #302, 303, 304, 305, 306, 401, 402, 403, 404, 405, and 405. All other lighting work outside these rooms has been removed from this project.

**KEY PLAN**



**REFERENCE NOTES**

- 1) REPAIR EXISTING CONDUIT/BOWES
- 2) RUN NEW WIRE AS SHOWN
- 3) REPLACE EXISTING SWITCH AND RECONNECT AS REQUIRED
- 4) EXISTING FIXTURE TO REMAIN RECONNECT TO NEW CIRCUIT AS REQUIRED (NO CHANGE)
- 5) EXTERIOR LIGHT FIXTURE TO REMAIN
- 6) REPLACE EXISTING KEY SWITCH WITH NEW KEY SWITCH AND FACE PLATE WITH FARGER PROOF SWITCH AND RECONNECT AS REQUIRED.



**REGISTERED PROFESSIONAL ENGINEER**  
**JAMES W. GORDON**  
 No. 5101  
 State of California  
 09/20/02

**SCAPELIGHTING**  
 1801 L Street  
 Bakersfield, CA 93301  
 (805) 837-0082

**REGISTERED PROFESSIONAL ENGINEER**  
**James W. Gordon**  
 No. 5101  
 State of California  
 09/20/02

**DATE:** 04-27-99  
**SCALE:** 7 OF 14 SHEETS  
**31**

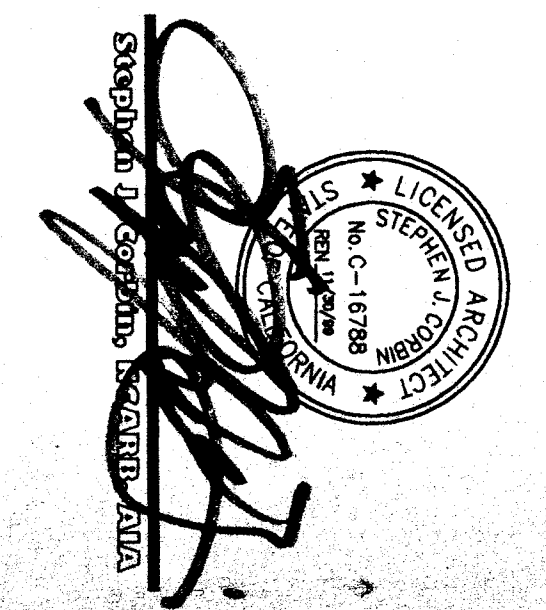
GREEN AND WHITE PAPER  
 PRINTED AND MANUFACTURED  
 IN THE UNITED STATES OF AMERICA  
 BY THE ENGINEERS AND  
 ARCHITECTS ASSOCIATION  
 OF CALIFORNIA

**BLDG. 'C' & 'D'  
 LIGHTING PLAN**

**RUTH HARDING SCHOOL  
 MODERNIZATION  
 3201 PICO ST.  
 FOR  
 BAKERSFIELD CITY SCHOOL DISTRICT  
 BAKERSFIELD, KERN COUNTY, CALIFORNIA**

**REGISTRATION STATE**  
 DIV. OF THE STATE ARCHITECTS  
 ARCH. 03-02154  
 FILE 15-6  
 EXPIRES 1-1-2003

444 W. Redwood Ave., Suite 106  
 Fresno, California 93711  
 (209) 432-4090 / (209) 432-4094 fax  
**James W. Gordon**, Registered Engineer  
 E.E. #5101



**SCAPELIGHTING**  
 1801 L Street  
 Bakersfield, CA 93301  
 (805) 837-0082