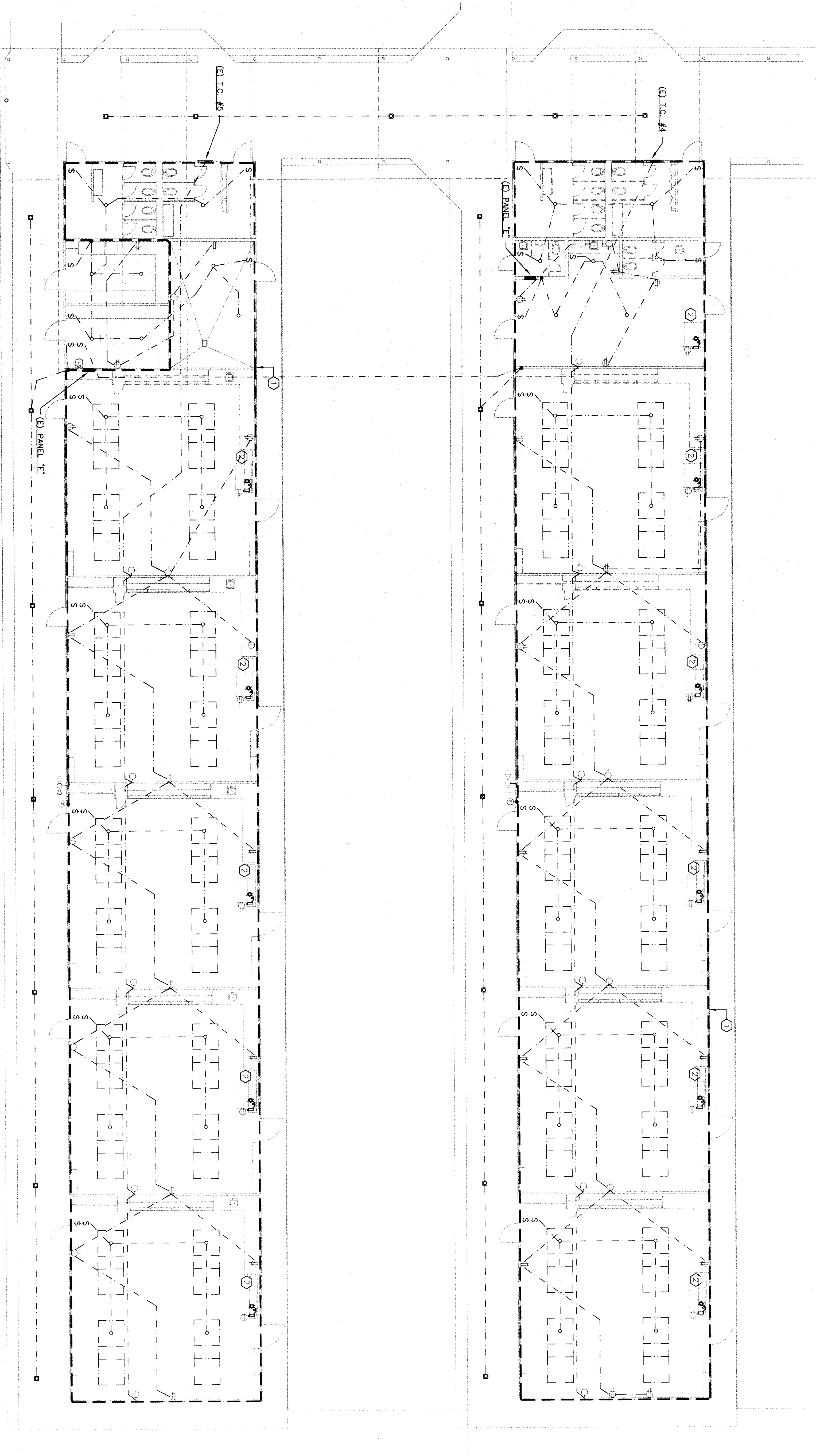




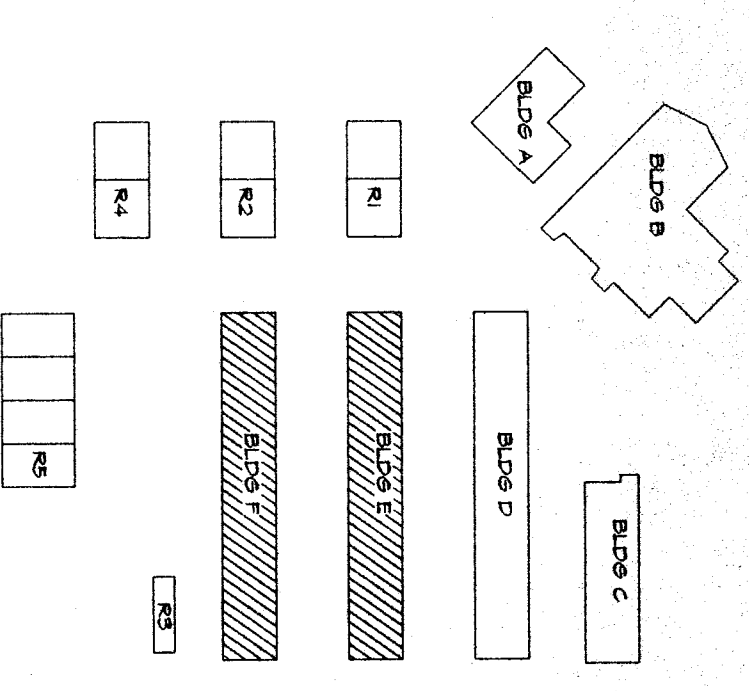
BUILDING 'E' AND BUILDING 'F' ELECTRICAL DEMOLITION PLAN

SCALE: 1/8" = 1'-0"



42. Refer to Electrical Drawing E2.2, Buildings 'E' and 'F' Demolition Plans.
 a. REVISE:
 4/11/11 #1/1
 Areas of demolition in Buildings 'E' and 'F' shall remain operational at all times. Electrical contractor shall provide temporary connection to maintain continuity of circuits affected by demolition.

KEY PLAN



REFERENCE NOTES
 ① EXISTING FIXTURES TO BE REMOVED ALONG WITH ANY CONDUIT, CONDUCTORS AND BOXES NOT BEING REUSED.
 ② EXISTING A/C UNIT & DUPLEX OUTLET ON ROOF TO REMAIN; RECONNECT (E) DUPLEX AS REQUIRED.

N.T.S.

SCA PARTNERS, Inc.
 1101 L Street
 Bakersfield, CA 93301
 (805) 837-1082

REGISTERED PROFESSIONAL ELECTRICAL ENGINEER
 James W. Garton, Electrical Engineer
 E.E. #5101

DEMOLITION STATEMENT
 DIV. OF THE STATE ARCHITECT
 No. 03-02154
 FILE 15-6
 DATE 4/11/11

**RUTH HARDING SCHOOL
 MODERNIZATION
 3201 PICO ST.
 FOR
 BAKERSFIELD CITY SCHOOL DISTRICT
 BAKERSFIELD, KERN COUNTY, CALIFORNIA**

**BLDG. 'E' & 'F'
 DEMOLITION
 POWER PLAN**

GENERAL AND VENDOR DATA CONTAINED HEREON IS THE PROPERTY OF SCA PARTNERS, INC. AND IS NOT TO BE REPRODUCED OR TRANSMITTED IN ANY FORM OR BY ANY MEANS, ELECTRONIC OR MECHANICAL, INCLUDING PHOTOCOPYING, RECORDING, OR BY ANY INFORMATION STORAGE AND RETRIEVAL SYSTEM.

DATE	REVISIONS

REGISTERED PROFESSIONAL ELECTRICAL ENGINEER
 No. 5101
 Exp. 04/30/12
 JAMES W. GARTON

957
 5 OF 14 SHEETS
2.2