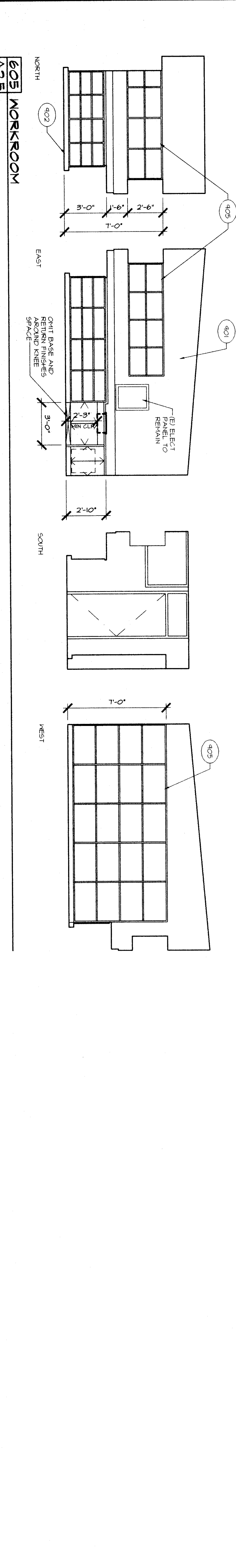
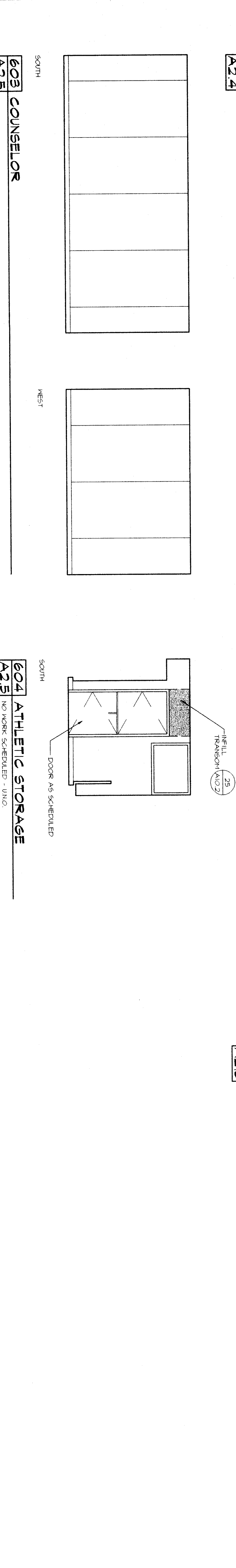
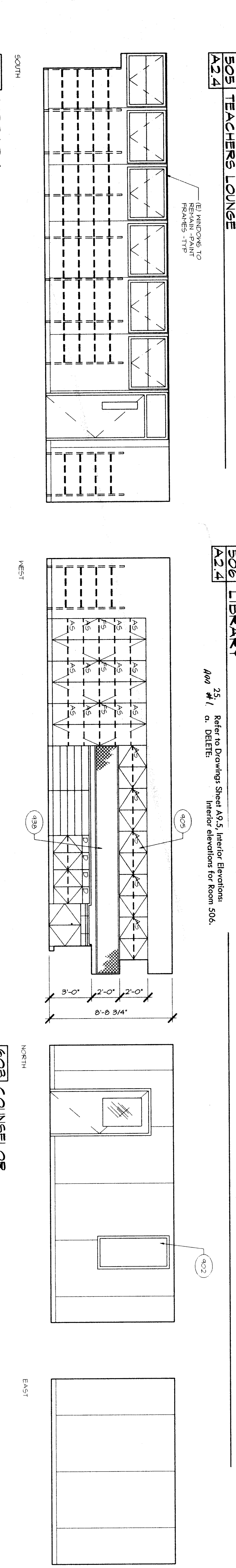
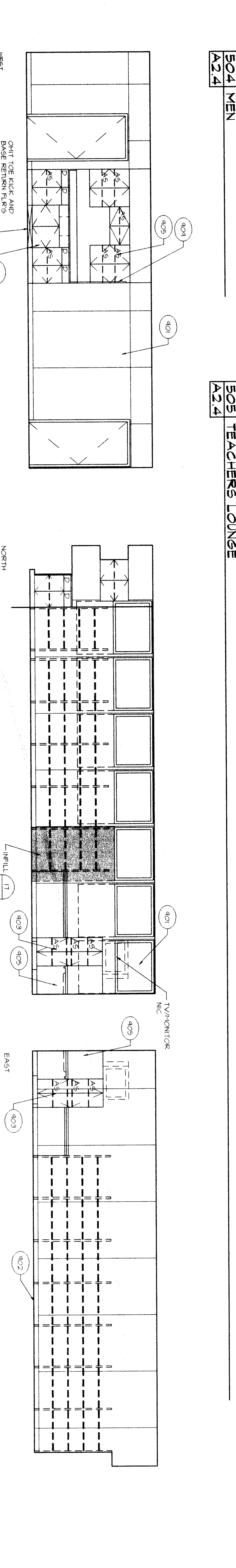
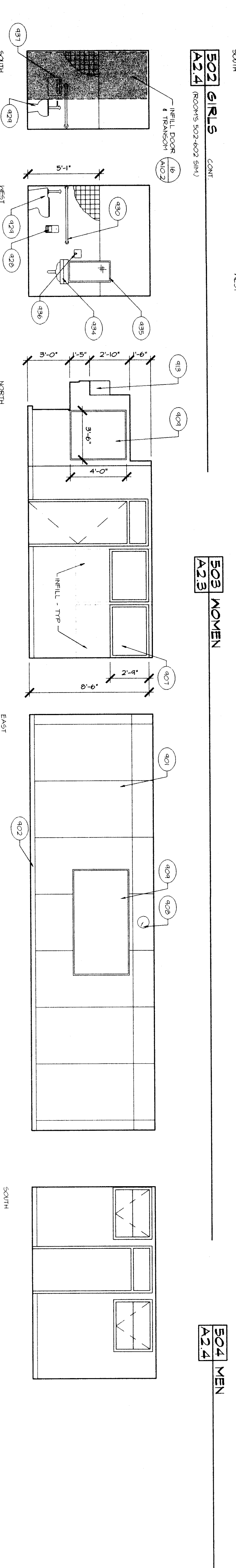
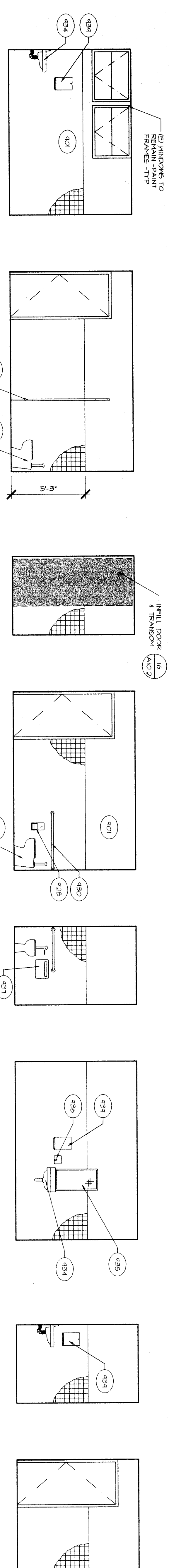


KEYNOTES

- (401) WALL FIN. - SEE R/F IN SCH
- (402) BASE - SEE R/F IN SCH
- (403) CAB. - SEE R/F IN SCH
- (404) EPOXY RESIN TOP EDGES
- (405) FINISH AND RETURN
- (406) FINISH AND RETURN
- (407) FINISH AND RETURN
- (408) FINISH AND RETURN
- (409) FINISH AND RETURN
- (410) FINISH AND RETURN
- (411) FINISH AND RETURN
- (412) FINISH AND RETURN
- (413) FINISH AND RETURN
- (414) FINISH AND RETURN
- (415) FINISH AND RETURN
- (416) FINISH AND RETURN
- (417) FINISH AND RETURN
- (418) FINISH AND RETURN
- (419) FINISH AND RETURN
- (420) FINISH AND RETURN
- (421) FINISH AND RETURN
- (422) FINISH AND RETURN
- (423) FINISH AND RETURN
- (424) FINISH AND RETURN
- (425) FINISH AND RETURN
- (426) FINISH AND RETURN
- (427) FINISH AND RETURN
- (428) FINISH AND RETURN
- (429) FINISH AND RETURN
- (430) FINISH AND RETURN
- (431) FINISH AND RETURN
- (432) FINISH AND RETURN
- (433) FINISH AND RETURN
- (434) FINISH AND RETURN
- (435) FINISH AND RETURN
- (436) FINISH AND RETURN
- (437) FINISH AND RETURN
- (438) FINISH AND RETURN
- (439) FINISH AND RETURN
- (440) FINISH AND RETURN
- (441) FINISH AND RETURN
- (442) FINISH AND RETURN
- (443) FINISH AND RETURN
- (444) FINISH AND RETURN
- (445) FINISH AND RETURN
- (446) FINISH AND RETURN
- (447) FINISH AND RETURN
- (448) FINISH AND RETURN
- (449) FINISH AND RETURN
- (450) FINISH AND RETURN



SCA
 1301 L Street
 Bakersfield, CA 93301
 (805) 327-1632

REGISTERED ARCHITECT
 State of California
 License No. 15000
 SCArchitect, Inc.
 SCA
 SCA

GENERATION STAMP
 DIV. OF THE STATE ARCHITECT
 OFFICE OF REGULATION SERVICES
 PER 03-02166
 SEE 15-B
 DATE: 01/13/2016

RUTH HARDING SCHOOL
 MODERNIZATION
 3201 PICO AVE.
 FOR
BAKERSFIELD CITY SCHOOL DISTRICT
 BAKERSFIELD, KERN COUNTY, CALIFORNIA

INTERIOR ELEVATIONS

MARK	DATE	REVISIONS
△		
△		
△		
△		

CHECK AND VERIFY ALL DIMENSIONS
 BEFORE PROCEEDING WITH THE
 WORK. REPORT DISCREPANCIES
 TO THE ARCHITECT. ALL
 CONSTRUCTION SHALL CONFORM
 TO THE CBC.

JOB NO. 967
DRAWN BY SCA
CHECKED BY SCA
DATE 01/13/2016

9.5
 27 OF 31 SHEETS