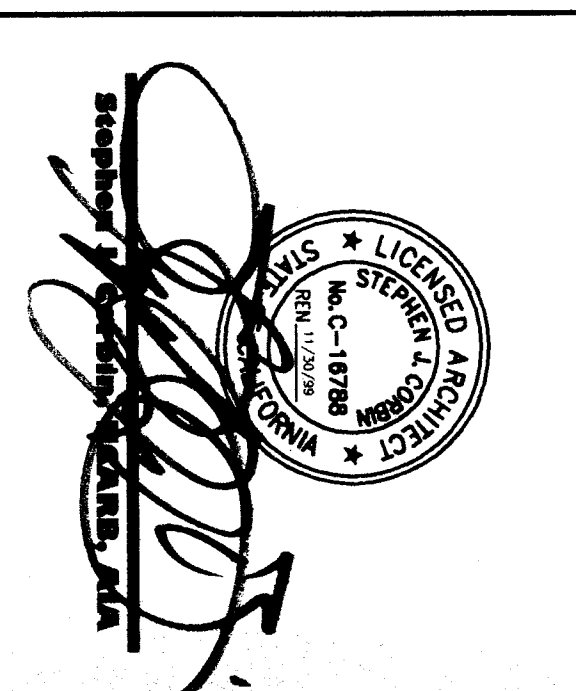
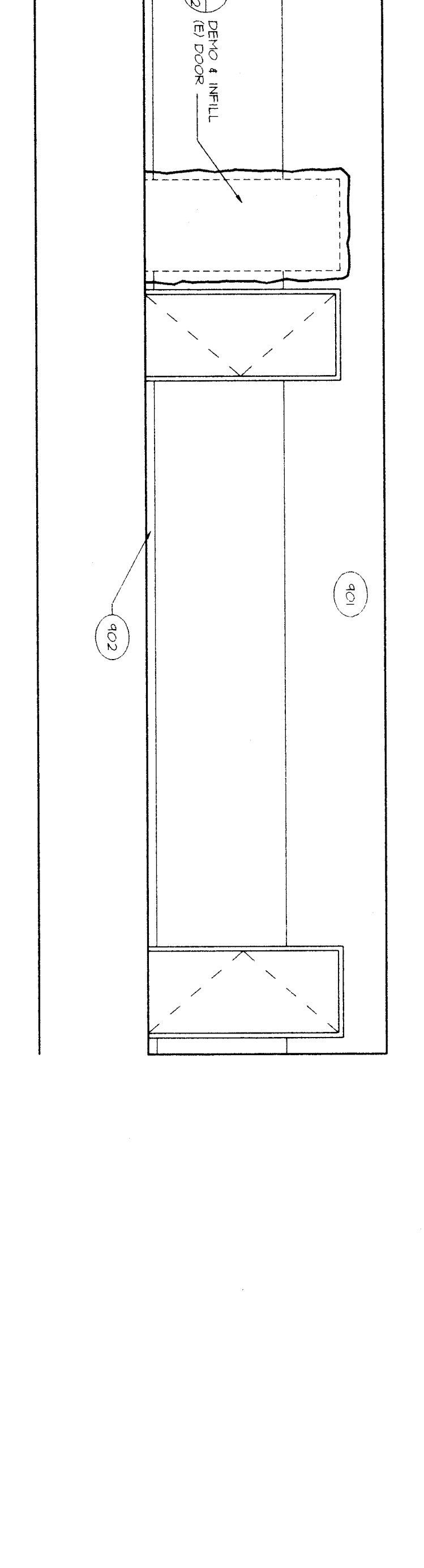
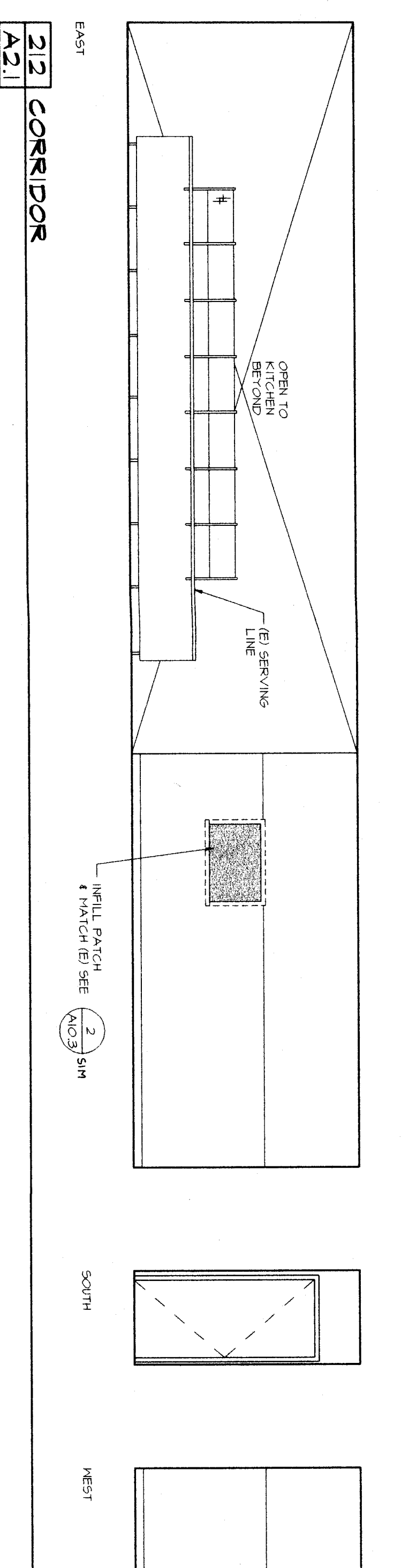
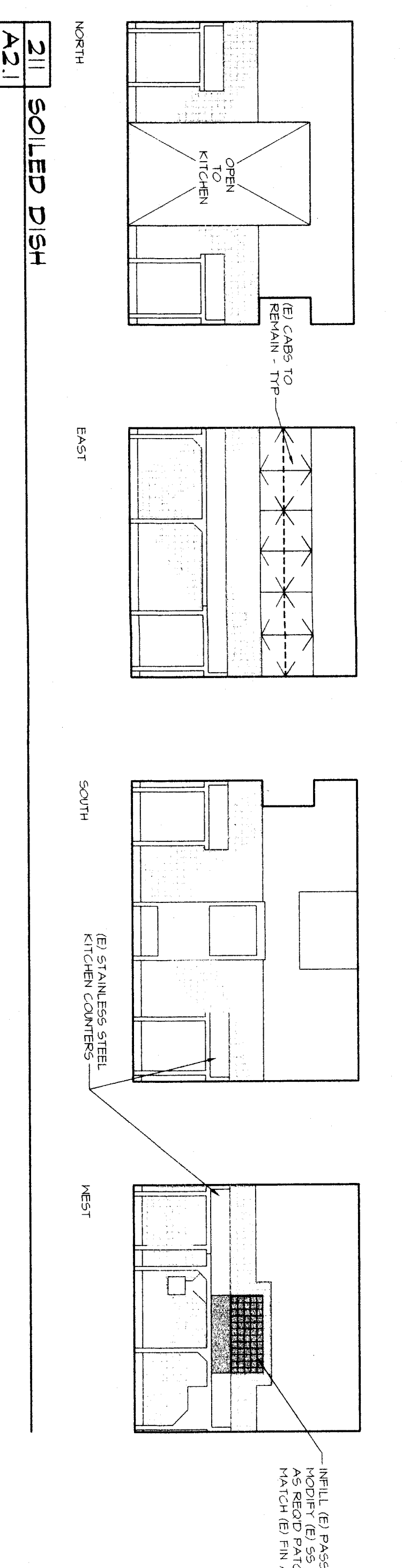
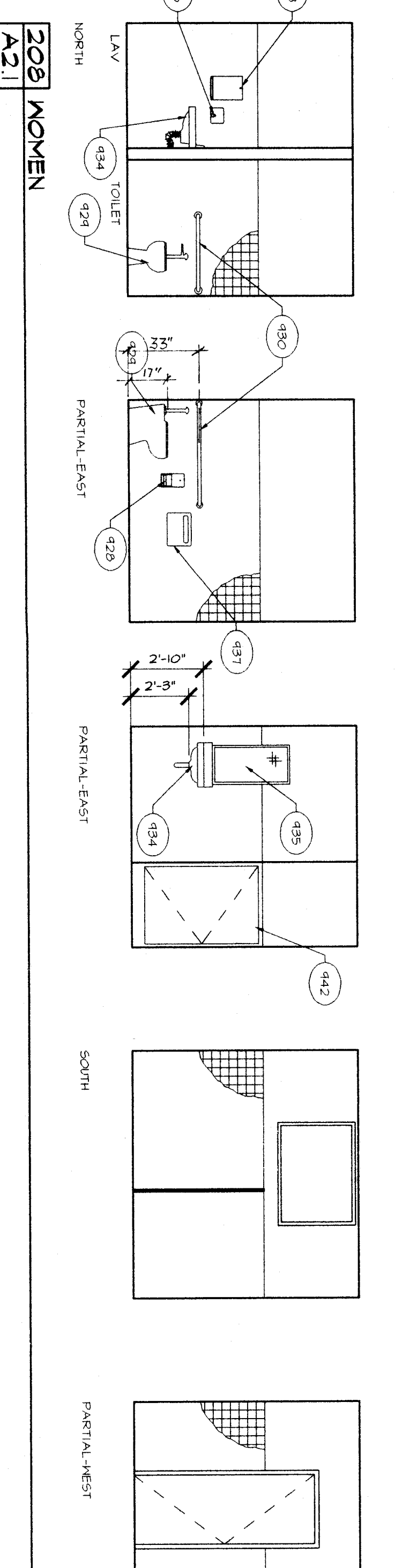
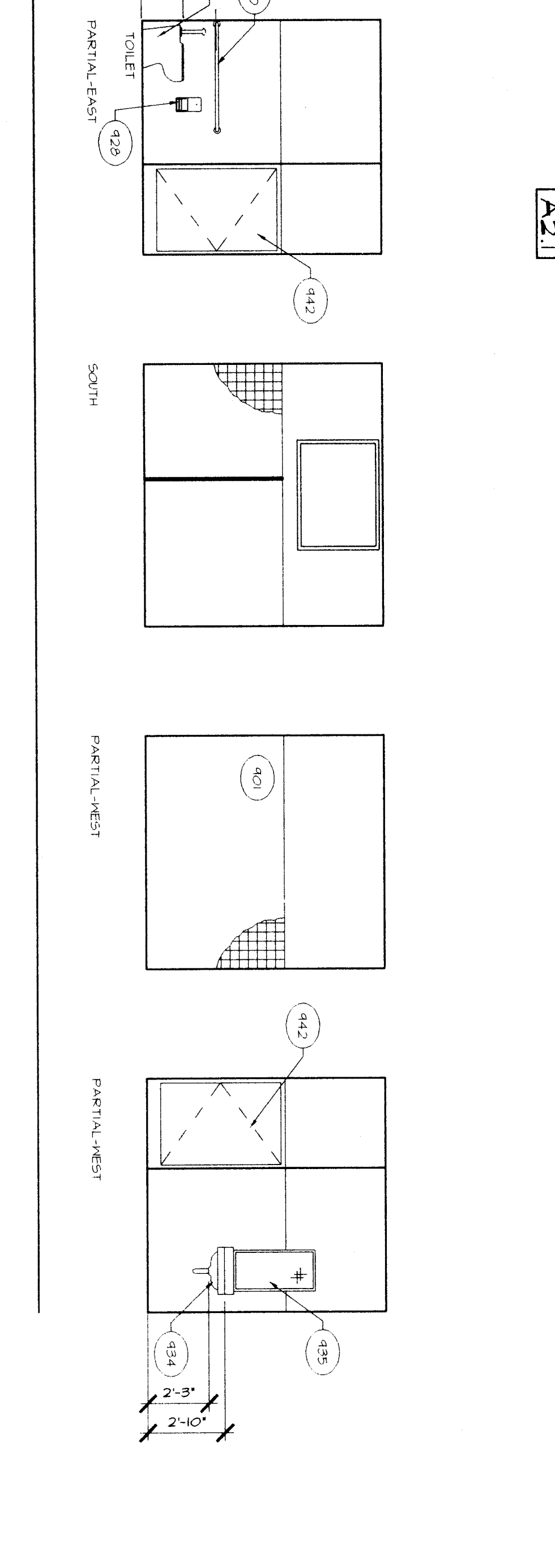
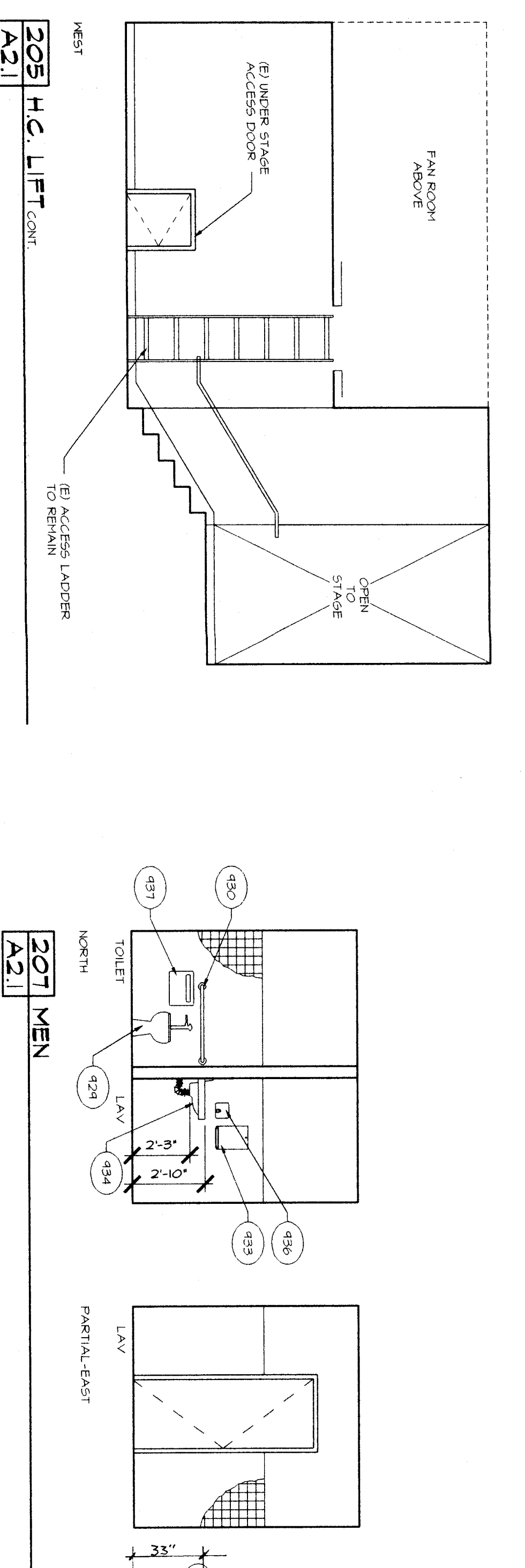
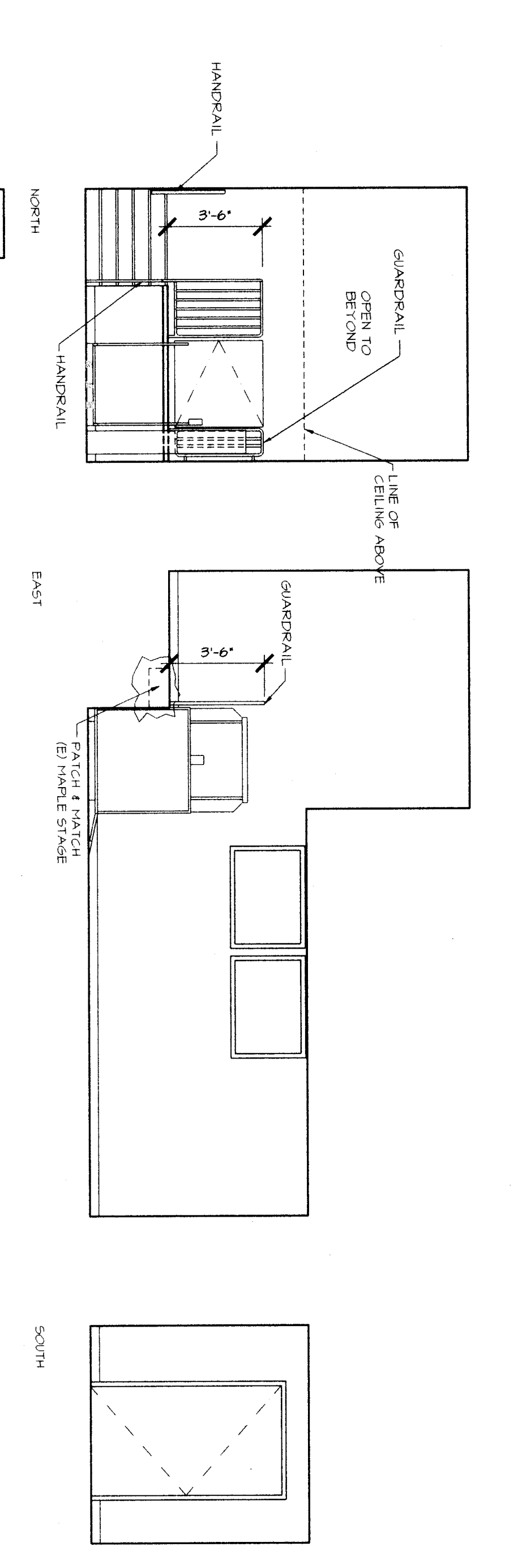
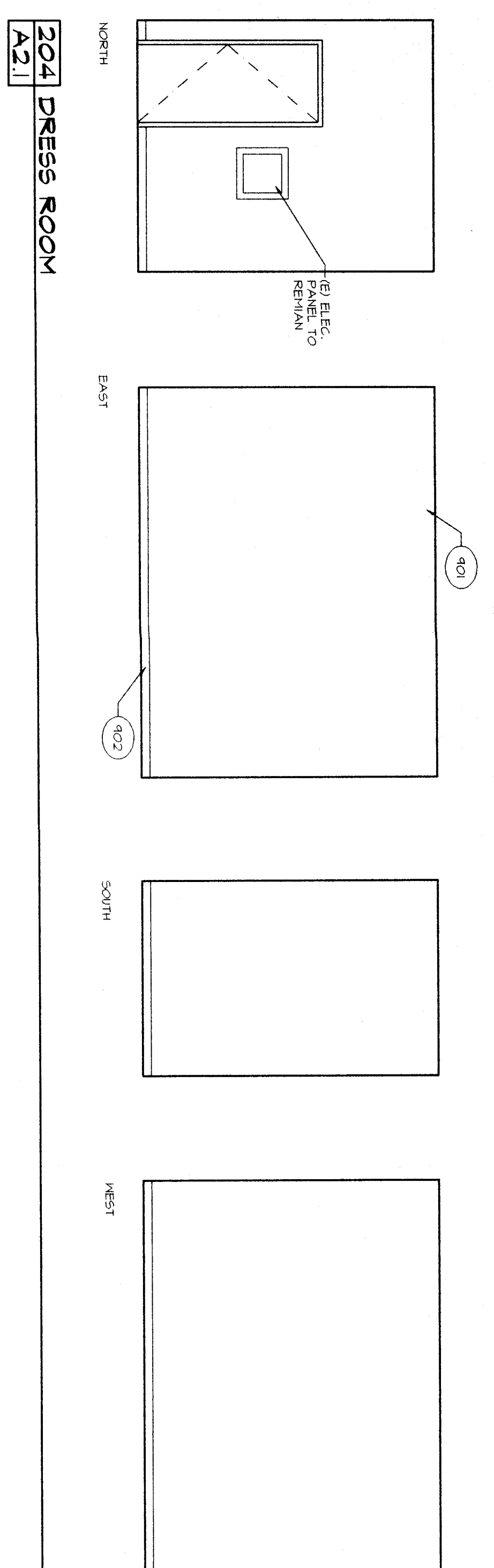


**KEYNOTES**

- (40) WALL FIN. - SEE INT FIN SCH
- (402) BASE - SEE INT FIN SCH
- (403) CABINET - SEE (A102)
- (404) FRONT RESIN TOP EDGES, SPLASH, AND RETURN
- (405) FLAT TOP EDGES, SPLASH, RESIN TOP EDGES, SPLASH, AND RETURN
- (406) CERAMIC TILE EDGES, SPLASH, RESIN TOP EDGES, SPLASH, AND RETURN
- (407) ALUMINUM STORAGE WINDOW SYSTEM PER WINDOW SCH
- (408) SEE ELEC DWGS - 4x8; MOUNT AT 1'-0" TO TOP
- (409) TACK BOARD - 4"x4" MOUNT AT 1'-0" TO TOP
- (410) PERIODICAL RACK
- (412) PROTECTION SCREEN (A102)
- (413) FINISHED END PANEL TO HATCH CABINET FACES
- (414) SINK - SEE PLUMBING DWGS
- (415) KNEE SPACE REQUIREMENTS (A102)
- (416) NOT USED
- (417) RANGE/OVEN PER SPECS - GAS OR ELECTRIC PER SPECS
- (418) DISHWASHER - PER SPECS
- (419) MICROWAVE/EMM FAN - PER SPECS
- (420) EMM FAN - PER SPECS
- (421) GARBAGE DISPOSAL - PER SPECS
- (422) TEMPERED GLASS DOOR
- (423) DOOR LOCK
- (424) DOOR AND DRAWER LOCK
- (425) INSTRUCTIONS CLOSET HW
- (426) FILE DRAWERS/V FILE FOLDERS CLR 5 1/4" P AT RIGHT SIDE
- (427) HOLLOW METAL WINDOW
- (428) BLOCKING IN WALL FOR TOILET PAPER DISP - (A102)
- (429) TOILET & REOS - SEE ALSO DWGS
- (430) SEAT BAR - 48" AT SIDE AND 36" AT BACK
- (431) FEMINE WAPIN DISPOSAL
- (432) FEMINE WAPIN DISPENSER
- (433) PAPER TOWEL DISP (A102)
- (434) LAVATORY & REOS - SEE ALSO DWGS
- (435) HIBOOK (A102)
- (436) SOAP DISPENSER (A102)
- (437) SEAT COVER DISPENSER (A102)
- (438) TACK BOARD - FV SIZE
- (439) BLOCKING IN WALL FOR PAPER TOWEL DISPENSER - NIC
- (440) FOUNTAIN FOUNTAIN & REOS - SEE ALSO DWGS
- (441) SINK & REOS - SEE ALSO DWGS
- (442) SOLID PLASTIC PARTITION (A102)
- (443) GYMN BOARD - 4x8; MOUNT AT 1'-0" TO TOP
- (444) ANGLE SUPPORT BRACKET (A102)
- (445) REMOVE THE HANGING BEING FROM THE CLOSET. THE HEAD OF THE TILE CANNOT BE FINISHED HEREFOR TO THE CABINET. ELEVATION
- (446) DRAWER LOCK
- (447) REINSTALL (E) PL 46 - POINT HIGH AS POSSIBLE
- (448) SENSITIVE (E) FIN (A102)



**RUTH HARDING SCHOOL**  
**MODERNIZATION**  
 3201 PICO AVE.  
 FOR  
**BAKERSFIELD CITY SCHOOL DISTRICT**  
 BAKERSFIELD, KERN COUNTY, CALIFORNIA

**INTERIOR ELEVATIONS**

DATE: \_\_\_\_\_

REVISIONS:


13810  
 957  
 DRAWN BY: \_\_\_\_\_  
 CHECKED BY: \_\_\_\_\_  
 DATE: \_\_\_\_\_

9.2  
 24 OF 28 SHEETS

1101 L Street  
 Bakersfield, CA 93301  
 (661) 837-1832