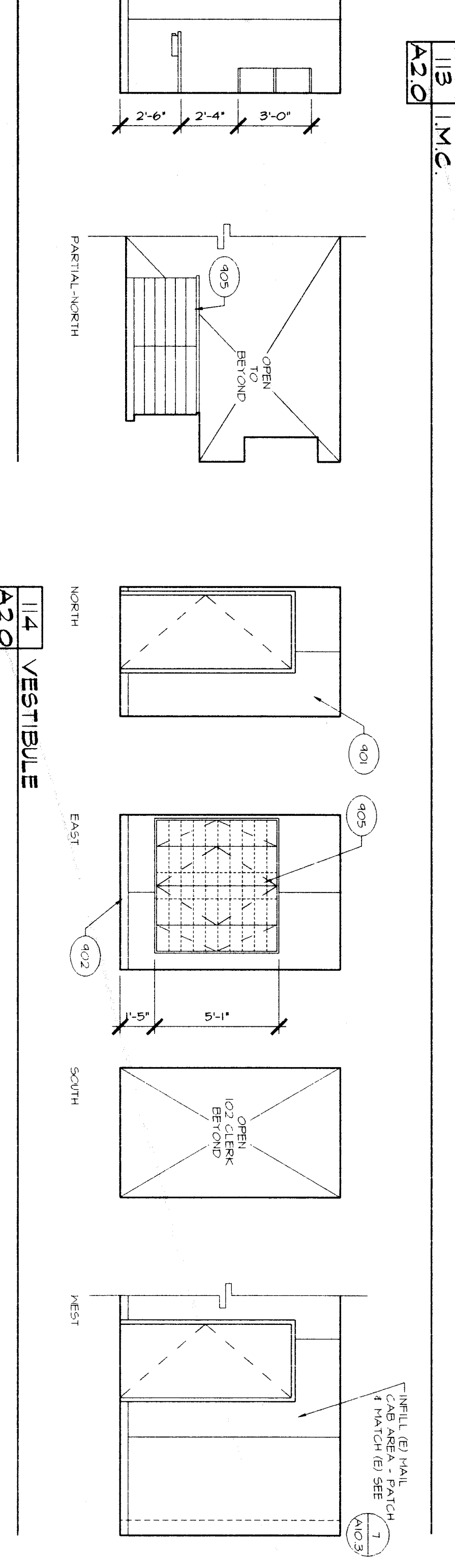
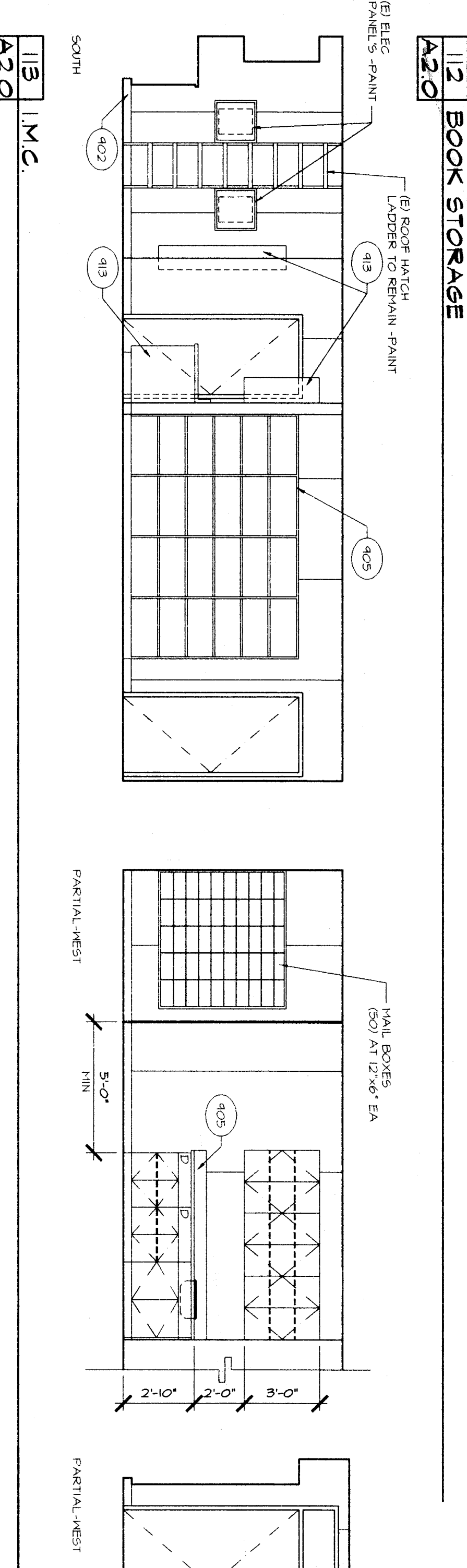


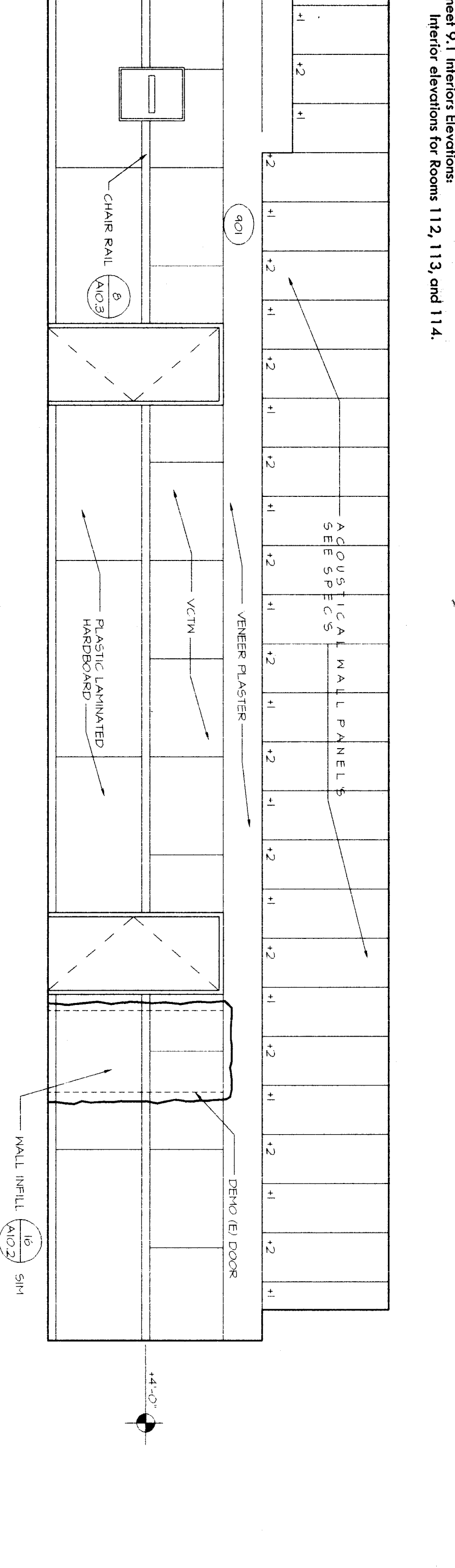
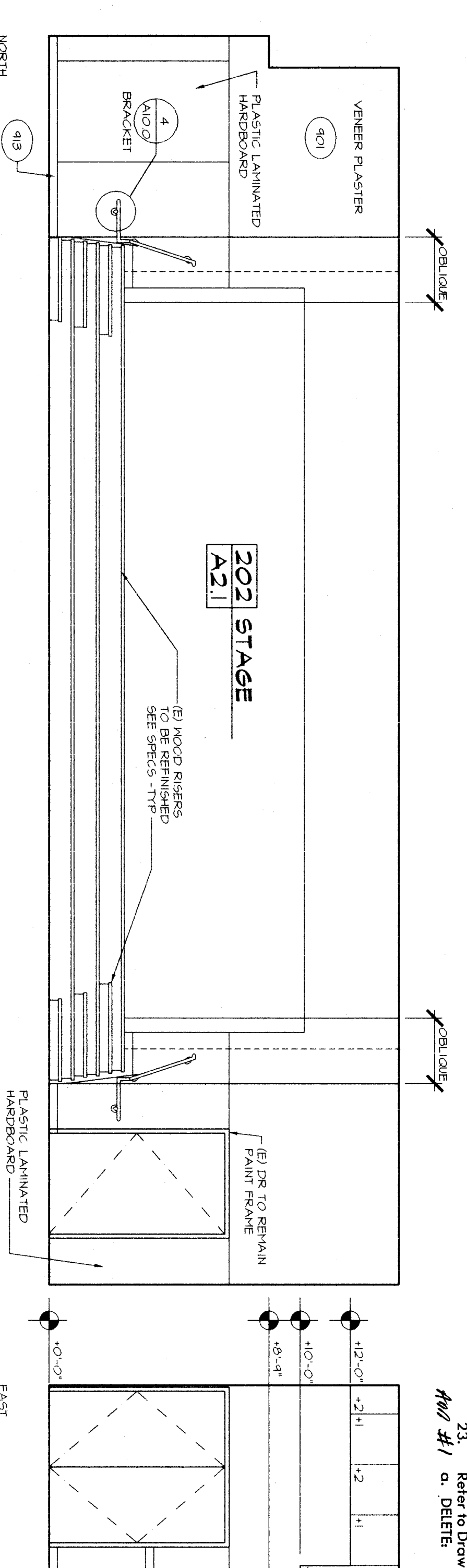
**KEYNOTES**

- 401 WALL FIN - SEE RFI FIN SCH
- 402 BASE - SEE RFI FIN SCH
- 403 CABINET - SEE AIO/2
- 404 EXPOS. FRON. TOP EDGES, FLASH AND RETURN
- 405 PLANT TOP EDGES, 3/8" ASH RESISTANT PLANK & LOCKING OF BRONZ. COMPRESSION STRIPS AND RETURN
- 406 ALUMINUM SPOKEFRONT WINDOW SYSTEM PER WINDOW SCH
- 407 CLOCK 48" x 30" TO CENTER - SEE T&E DRAWING
- 408 AT 1'-0" TO TOP
- 409 TACK BOARD - 4'-4" HIGHT AT 1'-0" TO TOP
- 410 PERIODICAL RACK
- 411 PROJECTION SCREEN AIO/2
- 412 FINISHED END PANEL 1/2 HATCH CABINET FACES
- 413 SINK - SEE PLUMBING DWGS
- 414 USE SPACE REFINISHERS AIO/2
- 415 NOT USED
- 416 RAINSCREEN PER SPECS, 3/8" ASH DISHWASHER - PER SPECS
- 417 NICROWAVE/REFIN FIN - PER SPECS
- 418 EMI PAN - PER SPECS
- 419 GARBAGE DISPOSAL - PER SPECS
- 420 TEMPERED GLASS DOOR
- 421 DOOR LOCK
- 422 DOOR AND CRANKER LOCK
- 423 NEGATIVE GLAZING
- 424 5 8" AT RIGHT SIDE PER FINISH SCHEDULE
- 425 HOLLOW METAL WINDOW
- 426 BLOCKING IN WALL FOR AIO/2
- 427 TOLER 1/4 REQS - SEE ALSO AIO/2
- 428 TOILET 1 REQS - SEE ALSO AIO/2
- 429 SEAT BAR - 48" AT BACK AIO/2
- 430 FINISHING WAPIN DISPOSAL AIO/2
- 431 FERRINE NAPKIN DISPENSER AIO/2
- 432 PAPER TOWEL DISP AIO/2
- 433 LAVATORY 1 REQS - AIO/2
- 434 HANDBR 1 AIO/2
- 435 SOAP DISPENSER AIO/2
- 436 SEAT COVER DISPENSER AIO/2
- 437 TACK BOARD - FV SIZE
- 438 BLOCKING IN WALL FOR PAPER TOWEL DISPENSER - NC
- 439 PRINING SCANTAM 1 REQS - AIO/2
- 440 SEE ALSO REIN DWGS AIO/2
- 441 SOLID PLASTIC PARTITION AIO/2
- 442 CHAIR BOARD - 4'-8" HIGHT AT 1'-0" TO TOP
- 443 ANGLE SUPPORT OC AIO/2
- 444 BRACKET 3/2 OC AIO/2
- 445 REMOVE TILE MANUFACT BRAND HINGES TO TANGON THICKNESS OF REIN IN FINISH
- 446 DRAWER LOCK
- 447 REINSTRAL (E) R, K, E - HIGHT
- 448 REINSTRAL (E) FINISH SCHEDULE



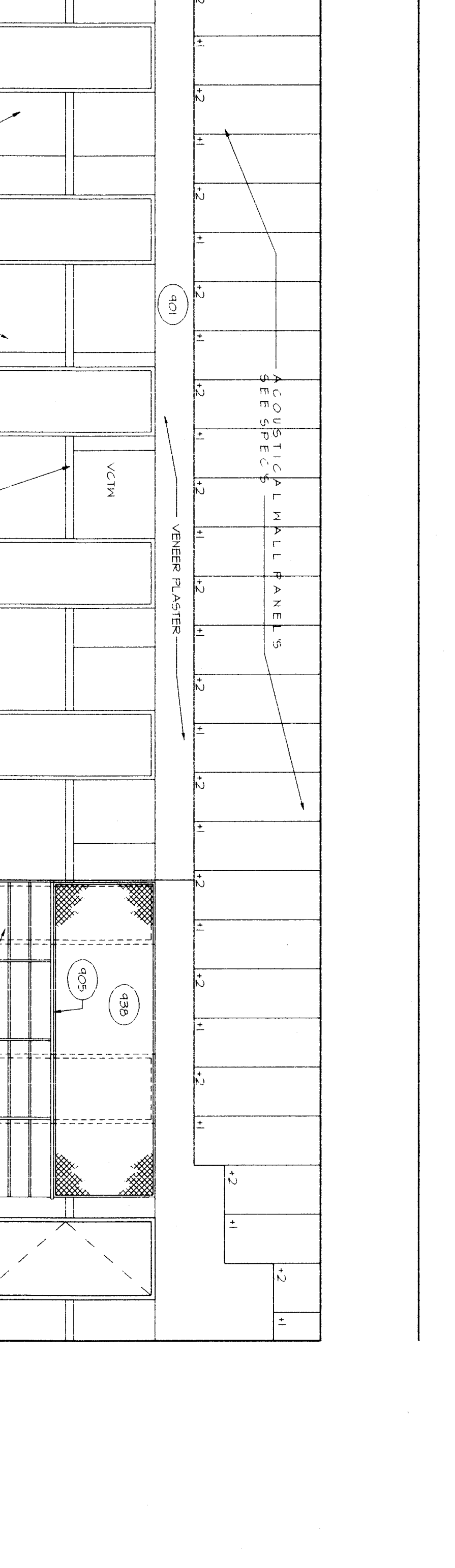
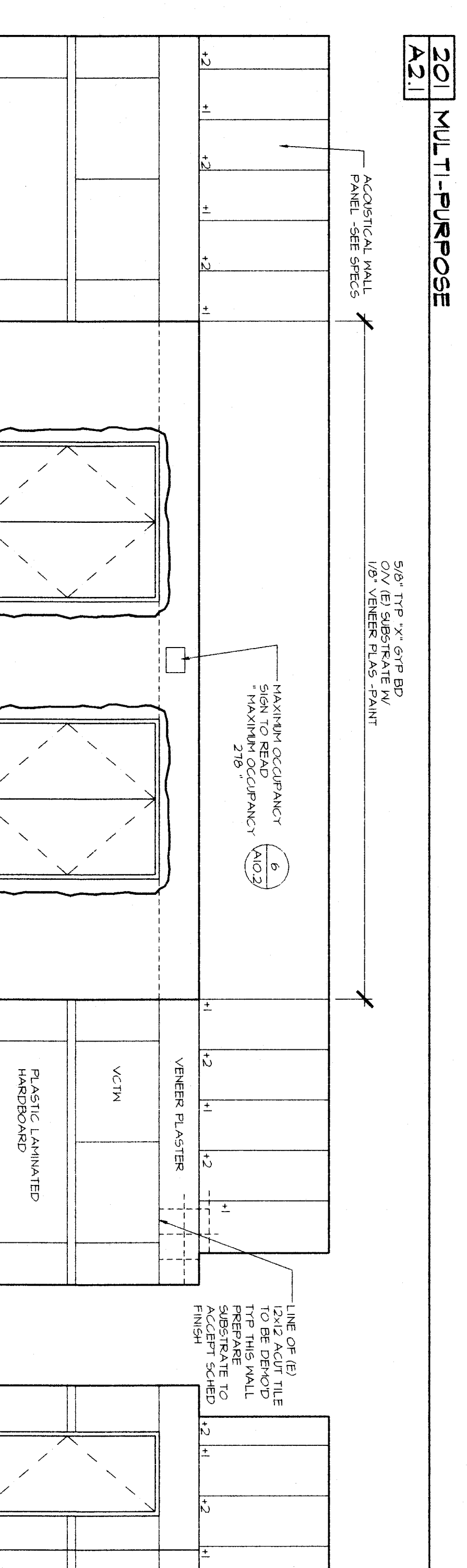
**KEYNOTES**

- 401 WALL FIN - SEE RFI FIN SCH
- 402 BASE - SEE RFI FIN SCH
- 403 CABINET - SEE AIO/2
- 404 EXPOS. FRON. TOP EDGES, FLASH AND RETURN
- 405 PLANT TOP EDGES, 3/8" ASH RESISTANT PLANK & LOCKING OF BRONZ. COMPRESSION STRIPS AND RETURN
- 406 ALUMINUM SPOKEFRONT WINDOW SYSTEM PER WINDOW SCH
- 407 CLOCK 48" x 30" TO CENTER - SEE T&E DRAWING
- 408 AT 1'-0" TO TOP
- 409 TACK BOARD - 4'-4" HIGHT AT 1'-0" TO TOP
- 410 PERIODICAL RACK
- 411 PROJECTION SCREEN AIO/2
- 412 FINISHED END PANEL 1/2 HATCH CABINET FACES
- 413 SINK - SEE PLUMBING DWGS
- 414 USE SPACE REFINISHERS AIO/2
- 415 NOT USED
- 416 RAINSCREEN PER SPECS, 3/8" ASH DISHWASHER - PER SPECS
- 417 NICROWAVE/REFIN FIN - PER SPECS
- 418 EMI PAN - PER SPECS
- 419 GARBAGE DISPOSAL - PER SPECS
- 420 TEMPERED GLASS DOOR
- 421 DOOR LOCK
- 422 DOOR AND CRANKER LOCK
- 423 NEGATIVE GLAZING
- 424 5 8" AT RIGHT SIDE PER FINISH SCHEDULE
- 425 HOLLOW METAL WINDOW
- 426 BLOCKING IN WALL FOR AIO/2
- 427 TOLER 1/4 REQS - SEE ALSO AIO/2
- 428 TOILET 1 REQS - SEE ALSO AIO/2
- 429 SEAT BAR - 48" AT BACK AIO/2
- 430 FINISHING WAPIN DISPOSAL AIO/2
- 431 FERRINE NAPKIN DISPENSER AIO/2
- 432 PAPER TOWEL DISP AIO/2
- 433 LAVATORY 1 REQS - AIO/2
- 434 HANDBR 1 AIO/2
- 435 SOAP DISPENSER AIO/2
- 436 SEAT COVER DISPENSER AIO/2
- 437 TACK BOARD - FV SIZE
- 438 BLOCKING IN WALL FOR PAPER TOWEL DISPENSER - NC
- 439 PRINING SCANTAM 1 REQS - AIO/2
- 440 SEE ALSO REIN DWGS AIO/2
- 441 SOLID PLASTIC PARTITION AIO/2
- 442 CHAIR BOARD - 4'-8" HIGHT AT 1'-0" TO TOP
- 443 ANGLE SUPPORT OC AIO/2
- 444 BRACKET 3/2 OC AIO/2
- 445 REMOVE TILE MANUFACT BRAND HINGES TO TANGON THICKNESS OF REIN IN FINISH
- 446 DRAWER LOCK
- 447 REINSTRAL (E) R, K, E - HIGHT
- 448 REINSTRAL (E) FINISH SCHEDULE



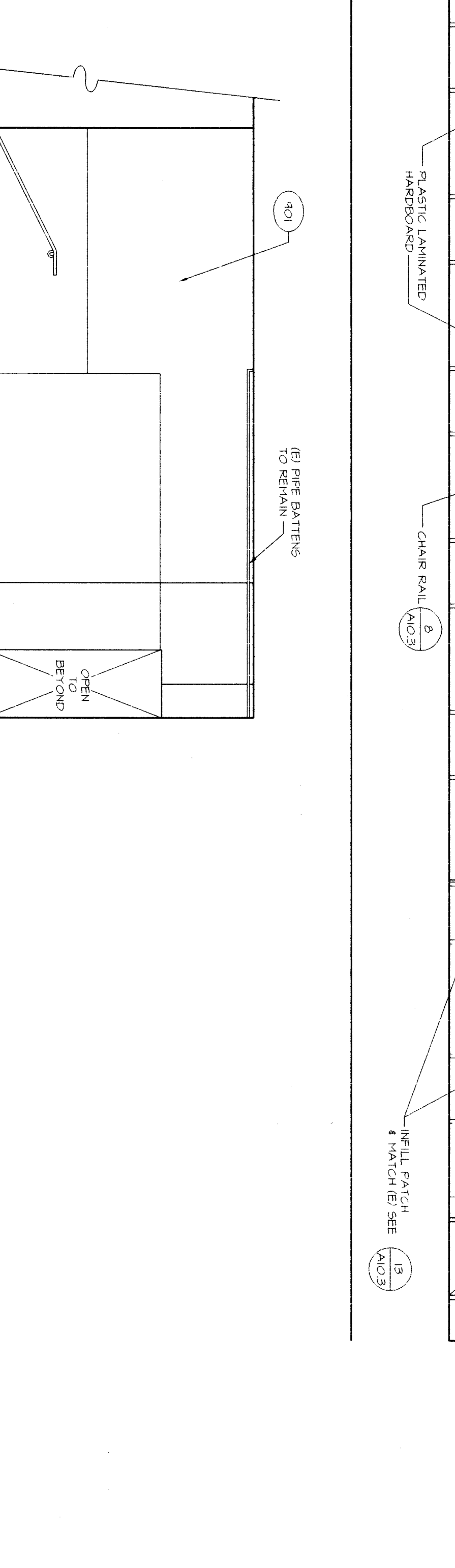
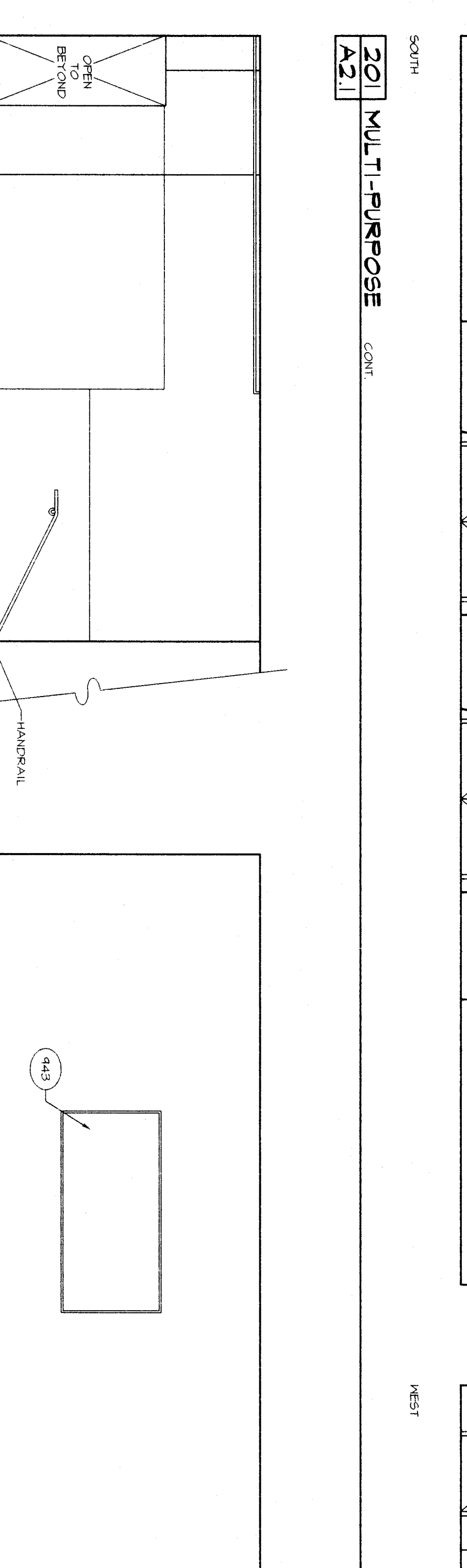
**KEYNOTES**

- 401 WALL FIN - SEE RFI FIN SCH
- 402 BASE - SEE RFI FIN SCH
- 403 CABINET - SEE AIO/2
- 404 EXPOS. FRON. TOP EDGES, FLASH AND RETURN
- 405 PLANT TOP EDGES, 3/8" ASH RESISTANT PLANK & LOCKING OF BRONZ. COMPRESSION STRIPS AND RETURN
- 406 ALUMINUM SPOKEFRONT WINDOW SYSTEM PER WINDOW SCH
- 407 CLOCK 48" x 30" TO CENTER - SEE T&E DRAWING
- 408 AT 1'-0" TO TOP
- 409 TACK BOARD - 4'-4" HIGHT AT 1'-0" TO TOP
- 410 PERIODICAL RACK
- 411 PROJECTION SCREEN AIO/2
- 412 FINISHED END PANEL 1/2 HATCH CABINET FACES
- 413 SINK - SEE PLUMBING DWGS
- 414 USE SPACE REFINISHERS AIO/2
- 415 NOT USED
- 416 RAINSCREEN PER SPECS, 3/8" ASH DISHWASHER - PER SPECS
- 417 NICROWAVE/REFIN FIN - PER SPECS
- 418 EMI PAN - PER SPECS
- 419 GARBAGE DISPOSAL - PER SPECS
- 420 TEMPERED GLASS DOOR
- 421 DOOR LOCK
- 422 DOOR AND CRANKER LOCK
- 423 NEGATIVE GLAZING
- 424 5 8" AT RIGHT SIDE PER FINISH SCHEDULE
- 425 HOLLOW METAL WINDOW
- 426 BLOCKING IN WALL FOR AIO/2
- 427 TOLER 1/4 REQS - SEE ALSO AIO/2
- 428 TOILET 1 REQS - SEE ALSO AIO/2
- 429 SEAT BAR - 48" AT BACK AIO/2
- 430 FINISHING WAPIN DISPOSAL AIO/2
- 431 FERRINE NAPKIN DISPENSER AIO/2
- 432 PAPER TOWEL DISP AIO/2
- 433 LAVATORY 1 REQS - AIO/2
- 434 HANDBR 1 AIO/2
- 435 SOAP DISPENSER AIO/2
- 436 SEAT COVER DISPENSER AIO/2
- 437 TACK BOARD - FV SIZE
- 438 BLOCKING IN WALL FOR PAPER TOWEL DISPENSER - NC
- 439 PRINING SCANTAM 1 REQS - AIO/2
- 440 SEE ALSO REIN DWGS AIO/2
- 441 SOLID PLASTIC PARTITION AIO/2
- 442 CHAIR BOARD - 4'-8" HIGHT AT 1'-0" TO TOP
- 443 ANGLE SUPPORT OC AIO/2
- 444 BRACKET 3/2 OC AIO/2
- 445 REMOVE TILE MANUFACT BRAND HINGES TO TANGON THICKNESS OF REIN IN FINISH
- 446 DRAWER LOCK
- 447 REINSTRAL (E) R, K, E - HIGHT
- 448 REINSTRAL (E) FINISH SCHEDULE



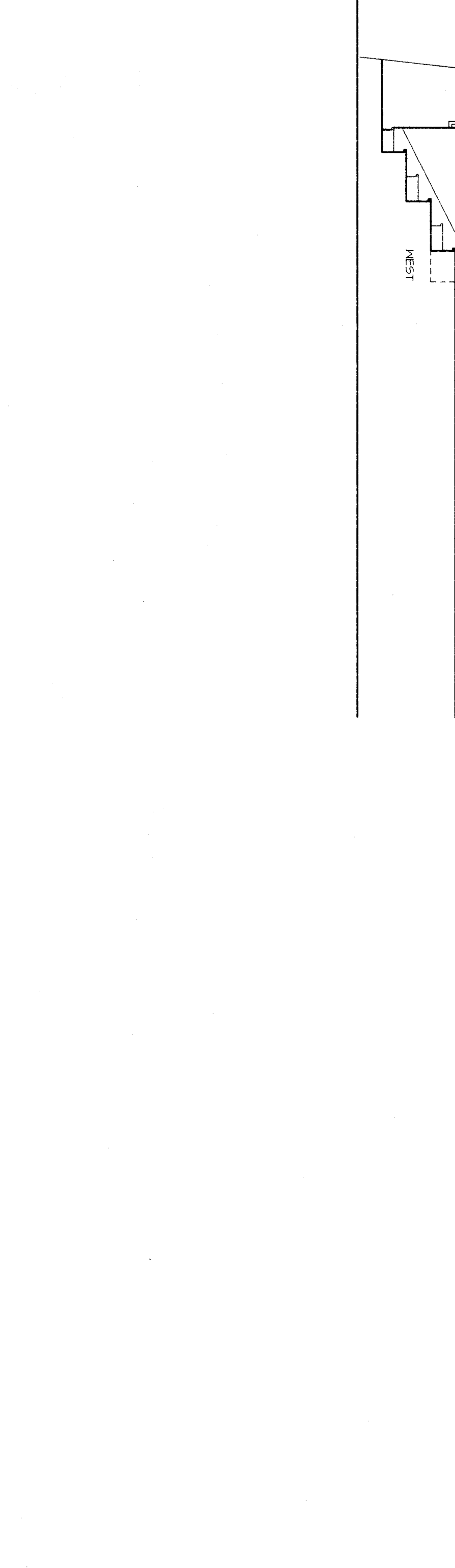
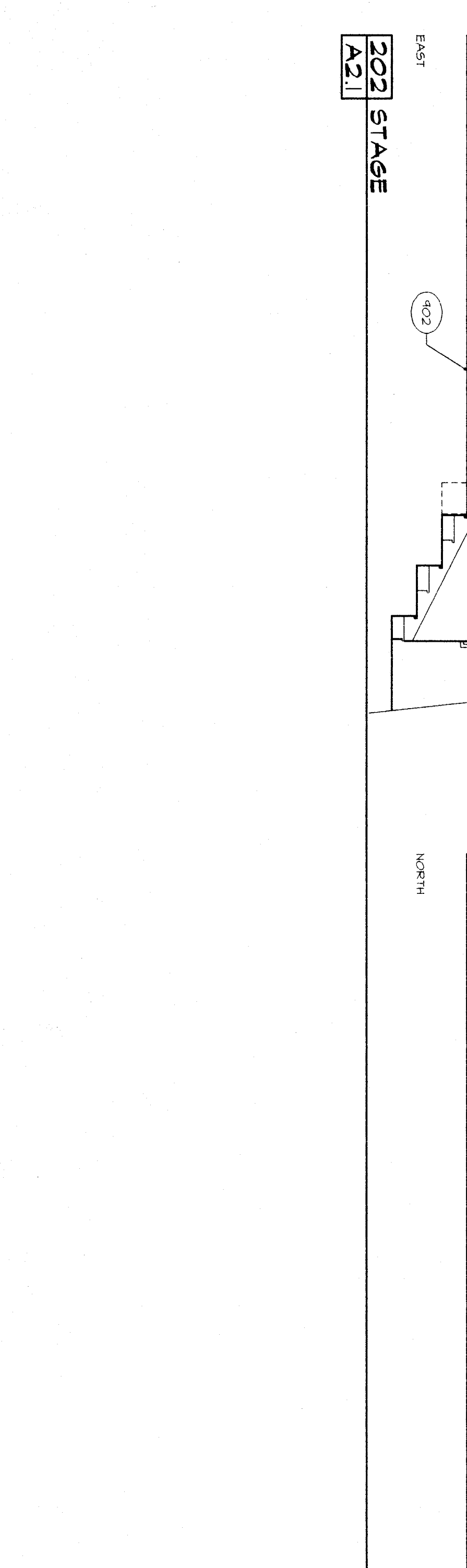
**KEYNOTES**

- 401 WALL FIN - SEE RFI FIN SCH
- 402 BASE - SEE RFI FIN SCH
- 403 CABINET - SEE AIO/2
- 404 EXPOS. FRON. TOP EDGES, FLASH AND RETURN
- 405 PLANT TOP EDGES, 3/8" ASH RESISTANT PLANK & LOCKING OF BRONZ. COMPRESSION STRIPS AND RETURN
- 406 ALUMINUM SPOKEFRONT WINDOW SYSTEM PER WINDOW SCH
- 407 CLOCK 48" x 30" TO CENTER - SEE T&E DRAWING
- 408 AT 1'-0" TO TOP
- 409 TACK BOARD - 4'-4" HIGHT AT 1'-0" TO TOP
- 410 PERIODICAL RACK
- 411 PROJECTION SCREEN AIO/2
- 412 FINISHED END PANEL 1/2 HATCH CABINET FACES
- 413 SINK - SEE PLUMBING DWGS
- 414 USE SPACE REFINISHERS AIO/2
- 415 NOT USED
- 416 RAINSCREEN PER SPECS, 3/8" ASH DISHWASHER - PER SPECS
- 417 NICROWAVE/REFIN FIN - PER SPECS
- 418 EMI PAN - PER SPECS
- 419 GARBAGE DISPOSAL - PER SPECS
- 420 TEMPERED GLASS DOOR
- 421 DOOR LOCK
- 422 DOOR AND CRANKER LOCK
- 423 NEGATIVE GLAZING
- 424 5 8" AT RIGHT SIDE PER FINISH SCHEDULE
- 425 HOLLOW METAL WINDOW
- 426 BLOCKING IN WALL FOR AIO/2
- 427 TOLER 1/4 REQS - SEE ALSO AIO/2
- 428 TOILET 1 REQS - SEE ALSO AIO/2
- 429 SEAT BAR - 48" AT BACK AIO/2
- 430 FINISHING WAPIN DISPOSAL AIO/2
- 431 FERRINE NAPKIN DISPENSER AIO/2
- 432 PAPER TOWEL DISP AIO/2
- 433 LAVATORY 1 REQS - AIO/2
- 434 HANDBR 1 AIO/2
- 435 SOAP DISPENSER AIO/2
- 436 SEAT COVER DISPENSER AIO/2
- 437 TACK BOARD - FV SIZE
- 438 BLOCKING IN WALL FOR PAPER TOWEL DISPENSER - NC
- 439 PRINING SCANTAM 1 REQS - AIO/2
- 440 SEE ALSO REIN DWGS AIO/2
- 441 SOLID PLASTIC PARTITION AIO/2
- 442 CHAIR BOARD - 4'-8" HIGHT AT 1'-0" TO TOP
- 443 ANGLE SUPPORT OC AIO/2
- 444 BRACKET 3/2 OC AIO/2
- 445 REMOVE TILE MANUFACT BRAND HINGES TO TANGON THICKNESS OF REIN IN FINISH
- 446 DRAWER LOCK
- 447 REINSTRAL (E) R, K, E - HIGHT
- 448 REINSTRAL (E) FINISH SCHEDULE



**KEYNOTES**

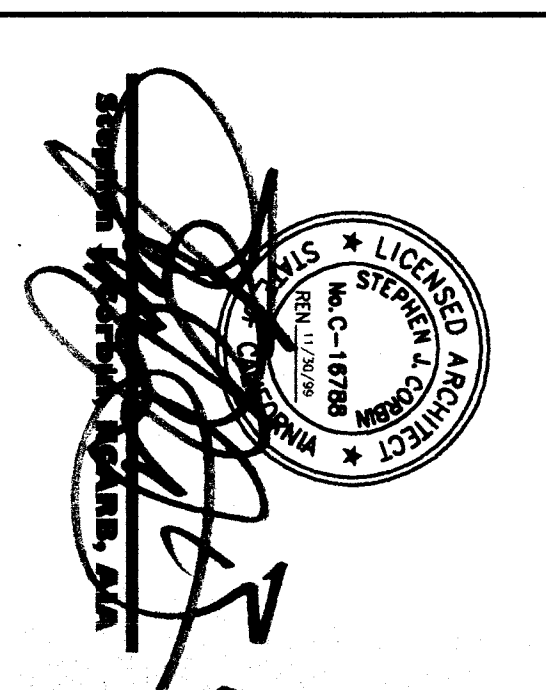
- 401 WALL FIN - SEE RFI FIN SCH
- 402 BASE - SEE RFI FIN SCH
- 403 CABINET - SEE AIO/2
- 404 EXPOS. FRON. TOP EDGES, FLASH AND RETURN
- 405 PLANT TOP EDGES, 3/8" ASH RESISTANT PLANK & LOCKING OF BRONZ. COMPRESSION STRIPS AND RETURN
- 406 ALUMINUM SPOKEFRONT WINDOW SYSTEM PER WINDOW SCH
- 407 CLOCK 48" x 30" TO CENTER - SEE T&E DRAWING
- 408 AT 1'-0" TO TOP
- 409 TACK BOARD - 4'-4" HIGHT AT 1'-0" TO TOP
- 410 PERIODICAL RACK
- 411 PROJECTION SCREEN AIO/2
- 412 FINISHED END PANEL 1/2 HATCH CABINET FACES
- 413 SINK - SEE PLUMBING DWGS
- 414 USE SPACE REFINISHERS AIO/2
- 415 NOT USED
- 416 RAINSCREEN PER SPECS, 3/8" ASH DISHWASHER - PER SPECS
- 417 NICROWAVE/REFIN FIN - PER SPECS
- 418 EMI PAN - PER SPECS
- 419 GARBAGE DISPOSAL - PER SPECS
- 420 TEMPERED GLASS DOOR
- 421 DOOR LOCK
- 422 DOOR AND CRANKER LOCK
- 423 NEGATIVE GLAZING
- 424 5 8" AT RIGHT SIDE PER FINISH SCHEDULE
- 425 HOLLOW METAL WINDOW
- 426 BLOCKING IN WALL FOR AIO/2
- 427 TOLER 1/4 REQS - SEE ALSO AIO/2
- 428 TOILET 1 REQS - SEE ALSO AIO/2
- 429 SEAT BAR - 48" AT BACK AIO/2
- 430 FINISHING WAPIN DISPOSAL AIO/2
- 431 FERRINE NAPKIN DISPENSER AIO/2
- 432 PAPER TOWEL DISP AIO/2
- 433 LAVATORY 1 REQS - AIO/2
- 434 HANDBR 1 AIO/2
- 435 SOAP DISPENSER AIO/2
- 436 SEAT COVER DISPENSER AIO/2
- 437 TACK BOARD - FV SIZE
- 438 BLOCKING IN WALL FOR PAPER TOWEL DISPENSER - NC
- 439 PRINING SCANTAM 1 REQS - AIO/2
- 440 SEE ALSO REIN DWGS AIO/2
- 441 SOLID PLASTIC PARTITION AIO/2
- 442 CHAIR BOARD - 4'-8" HIGHT AT 1'-0" TO TOP
- 443 ANGLE SUPPORT OC AIO/2
- 444 BRACKET 3/2 OC AIO/2
- 445 REMOVE TILE MANUFACT BRAND HINGES TO TANGON THICKNESS OF REIN IN FINISH
- 446 DRAWER LOCK
- 447 REINSTRAL (E) R, K, E - HIGHT
- 448 REINSTRAL (E) FINISH SCHEDULE



**KEYNOTES**

- 401 WALL FIN - SEE RFI FIN SCH
- 402 BASE - SEE RFI FIN SCH
- 403 CABINET - SEE AIO/2
- 404 EXPOS. FRON. TOP EDGES, FLASH AND RETURN
- 405 PLANT TOP EDGES, 3/8" ASH RESISTANT PLANK & LOCKING OF BRONZ. COMPRESSION STRIPS AND RETURN
- 406 ALUMINUM SPOKEFRONT WINDOW SYSTEM PER WINDOW SCH
- 407 CLOCK 48" x 30" TO CENTER - SEE T&E DRAWING
- 408 AT 1'-0" TO TOP
- 409 TACK BOARD - 4'-4" HIGHT AT 1'-0" TO TOP
- 410 PERIODICAL RACK
- 411 PROJECTION SCREEN AIO/2
- 412 FINISHED END PANEL 1/2 HATCH CABINET FACES
- 413 SINK - SEE PLUMBING DWGS
- 414 USE SPACE REFINISHERS AIO/2
- 415 NOT USED
- 416 RAINSCREEN PER SPECS, 3/8" ASH DISHWASHER - PER SPECS
- 417 NICROWAVE/REFIN FIN - PER SPECS
- 418 EMI PAN - PER SPECS
- 419 GARBAGE DISPOSAL - PER SPECS
- 420 TEMPERED GLASS DOOR
- 421 DOOR LOCK
- 422 DOOR AND CRANKER LOCK
- 423 NEGATIVE GLAZING
- 424 5 8" AT RIGHT SIDE PER FINISH SCHEDULE
- 425 HOLLOW METAL WINDOW
- 426 BLOCKING IN WALL FOR AIO/2
- 427 TOLER 1/4 REQS - SEE ALSO AIO/2
- 428 TOILET 1 REQS - SEE ALSO AIO/2
- 429 SEAT BAR - 48" AT BACK AIO/2
- 430 FINISHING WAPIN DISPOSAL AIO/2
- 431 FERRINE NAPKIN DISPENSER AIO/2
- 432 PAPER TOWEL DISP AIO/2
- 433 LAVATORY 1 REQS - AIO/2
- 434 HANDBR 1 AIO/2
- 435 SOAP DISPENSER AIO/2
- 436 SEAT COVER DISPENSER AIO/2
- 437 TACK BOARD - FV SIZE
- 438 BLOCKING IN WALL FOR PAPER TOWEL DISPENSER - NC
- 439 PRINING SCANTAM 1 REQS - AIO/2
- 440 SEE ALSO REIN DWGS AIO/2
- 441 SOLID PLASTIC PARTITION AIO/2
- 442 CHAIR BOARD - 4'-8" HIGHT AT 1'-0" TO TOP
- 443 ANGLE SUPPORT OC AIO/2
- 444 BRACKET 3/2 OC AIO/2
- 445 REMOVE TILE MANUFACT BRAND HINGES TO TANGON THICKNESS OF REIN IN FINISH
- 446 DRAWER LOCK
- 447 REINSTRAL (E) R, K, E - HIGHT
- 448 REINSTRAL (E) FINISH SCHEDULE

23. Refer to Drawing Sheet 9.1 Interiors Elevations for Rooms 112, 113, and 114.



**RUTH HARDING SCHOOL**  
MODERNIZATION  
3201 PICO AVE.  
FOR  
BAKERSFIELD CITY SCHOOL DISTRICT  
BAKERSFIELD, KERN COUNTY, CALIFORNIA

9.1  
27 OF 31 SHEETS

MARK	DATE	REVISIONS
△		
△		
△		
△		

CHECK AND VERIFY ALL DIMENSIONS BEFORE PROCEEDING WITH THE CONSTRUCTION. ALL CONSTRUCTION SHALL CONFORM TO THE C.B.C.

JOB NO. 967  
DRAWN BY: [Signature]  
CHECKED BY: [Signature]  
DATE: 09/06/04