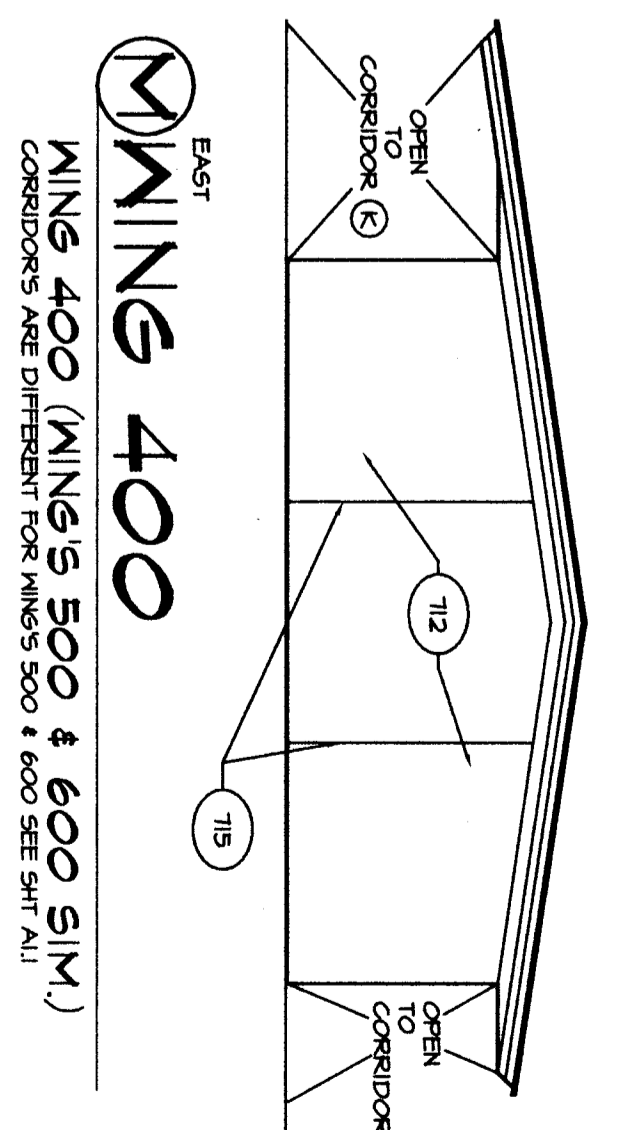
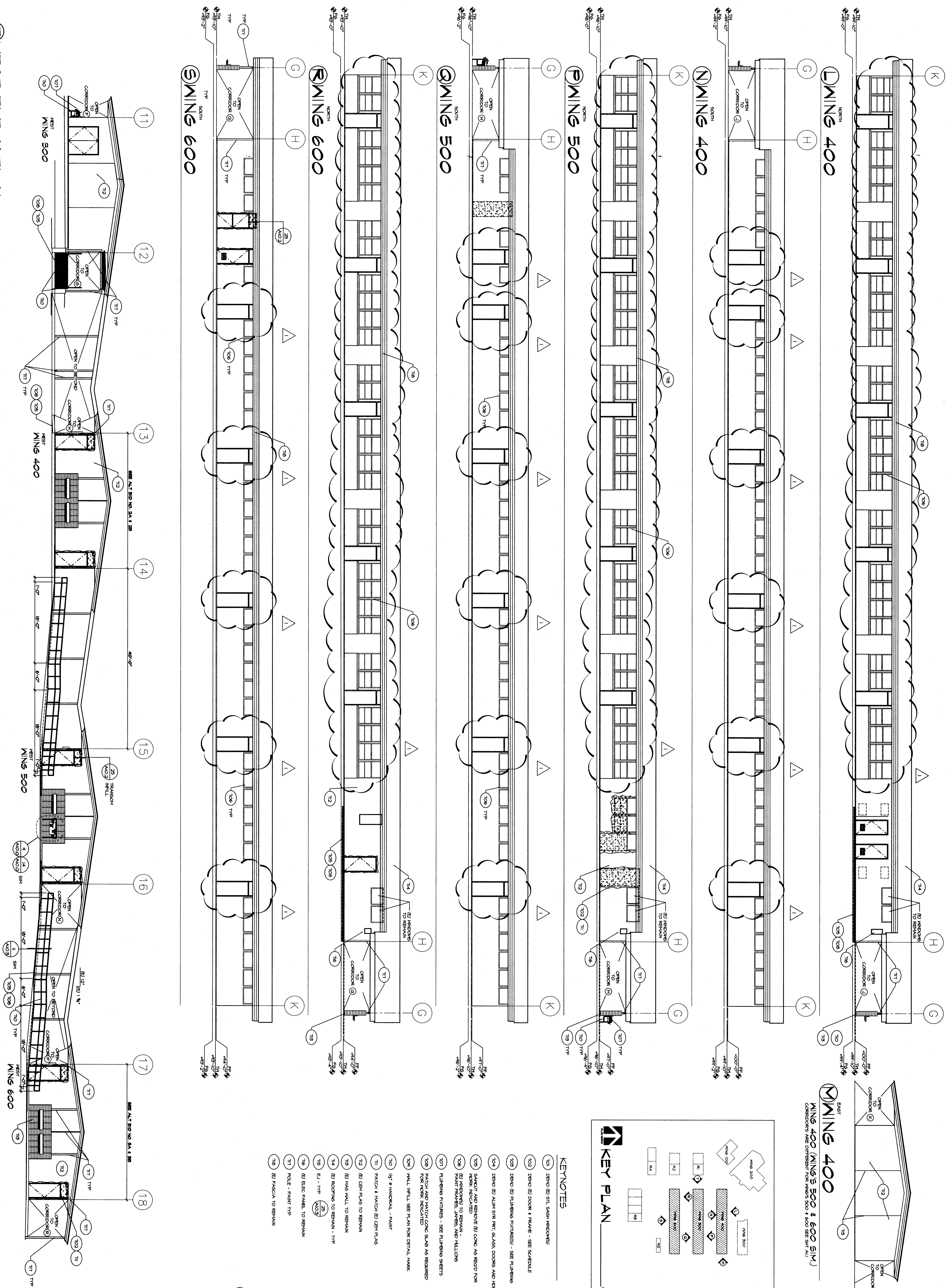


WEST ELEVATION



- KEYNOTES**
- 101 DEMO (B) ST. SASH WINDOW
 - 102 DEMO (B) DOOR + FRAME - SEE SCHEDULE
 - 103 DEMO (B) PLUMBING FINISHES - SEE SCHEDULE
 - 104 DEMO (B) ALUM. SFR. FR. GLASS DOORS AND ROWER WORK INDICATED
 - 105 SAWT. AND REMOVE (B) CONC. AS BEFO. FOR PATCH AND MATCH CONC. SLAB AS REQUIRED FOR WORK INDICATED
 - 106 PLUMBING FINISHES - SEE PLUMBING SHEETS
 - 107 PATCH AND MATCH CONC. SLAB AS REQUIRED FOR WORK INDICATED
 - 108 WALL INFILL SEE PLAN FOR DETAIL MARK
 - 109 1/2\"/>
 - 110 PATCH + FINISH (B) CEILING
 - 111 PATCH + FINISH (B) CEILING
 - 112 (B) CEILING FINISHES TO REMAIN
 - 113 (B) CEILING FINISHES TO REMAIN
 - 114 (B) CEILING FINISHES TO REMAIN
 - 115 (B) CEILING FINISHES TO REMAIN
 - 116 (B) CEILING FINISHES TO REMAIN
 - 117 (B) CEILING FINISHES TO REMAIN
 - 118 (B) CEILING FINISHES TO REMAIN
 - 119 (B) CEILING FINISHES TO REMAIN

MARK	DATE	REVISIONS
▲		
△		
▽		

RUTH HARDING SCHOOL
MODERNIZATION
 3201 PICO AVE.
 FOR
BAKERSFIELD CITY SCHOOL DISTRICT
 BAKERSFIELD, KERN COUNTY, CALIFORNIA

ARCHITECT
BOI L. STRAET
 BAKERSFIELD, CA 93301
 PH: (661) 327-1632
 FAX: (661) 327-2399

ARCHITECT
BOI L. STRAET
 BAKERSFIELD, CA 93301
 PH: (661) 327-1632
 FAX: (661) 327-2399

ADDENDUM #01
RUTH HARDING SCHOOL
MODERNIZATION
 BAKERSFIELD CITY SCHOOL DISTRICT
 BAKERSFIELD, KERN COUNTY, CALIFORNIA

EXTERIOR ELEVATIONS

7.1
 18 OF 31 SHEETS

18. Refer to Drawings Sheet A7.1 Exterior Elevations. Sheet No. A7.1 in its entirety. Sheet No. A7.1, as attached to this addendum, (addendum drawing #14).