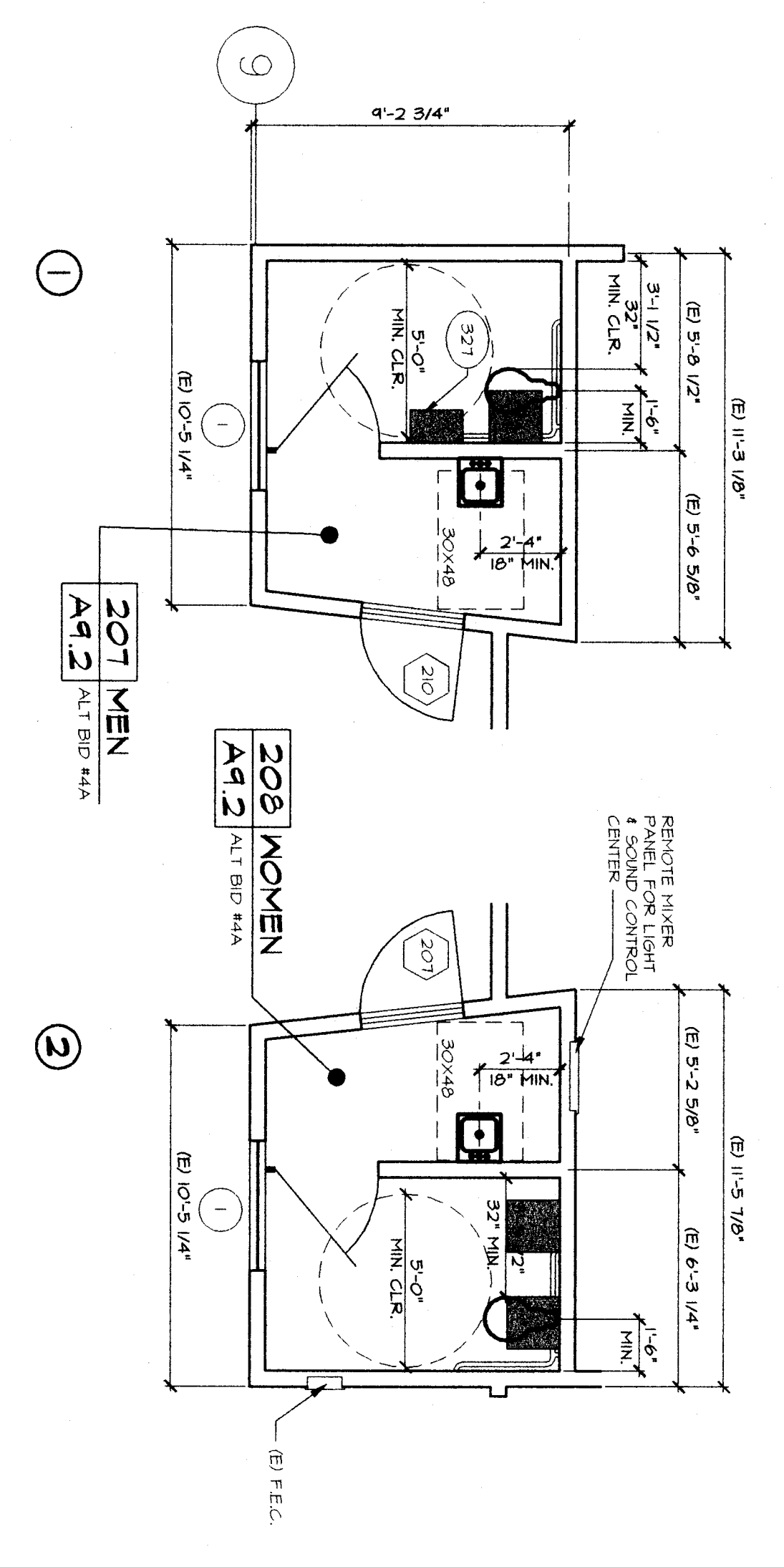
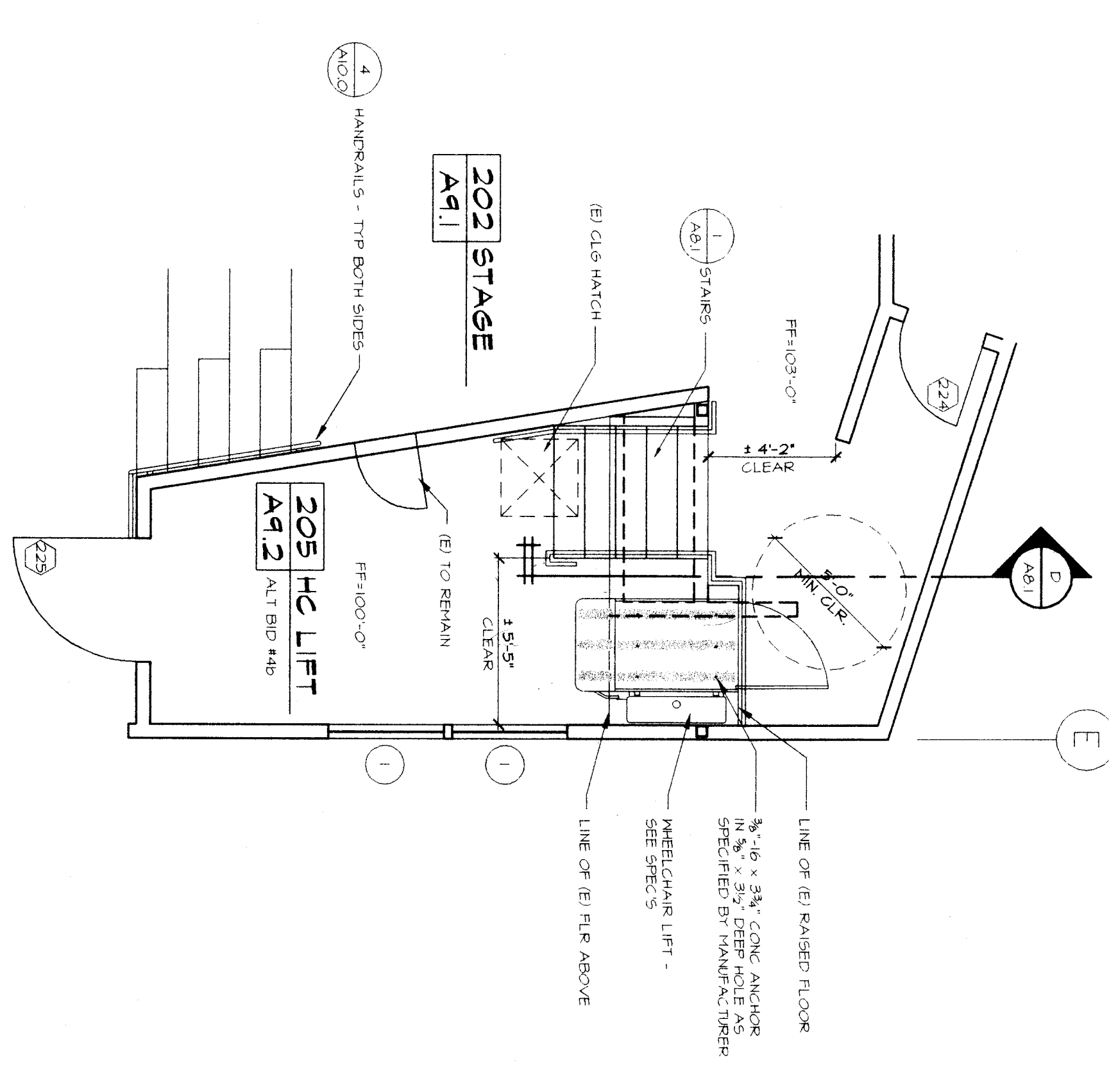


A PARTIAL FLOOR PLAN
MINGS - 200 ALT BID#1
SCALE: W - 1/16"

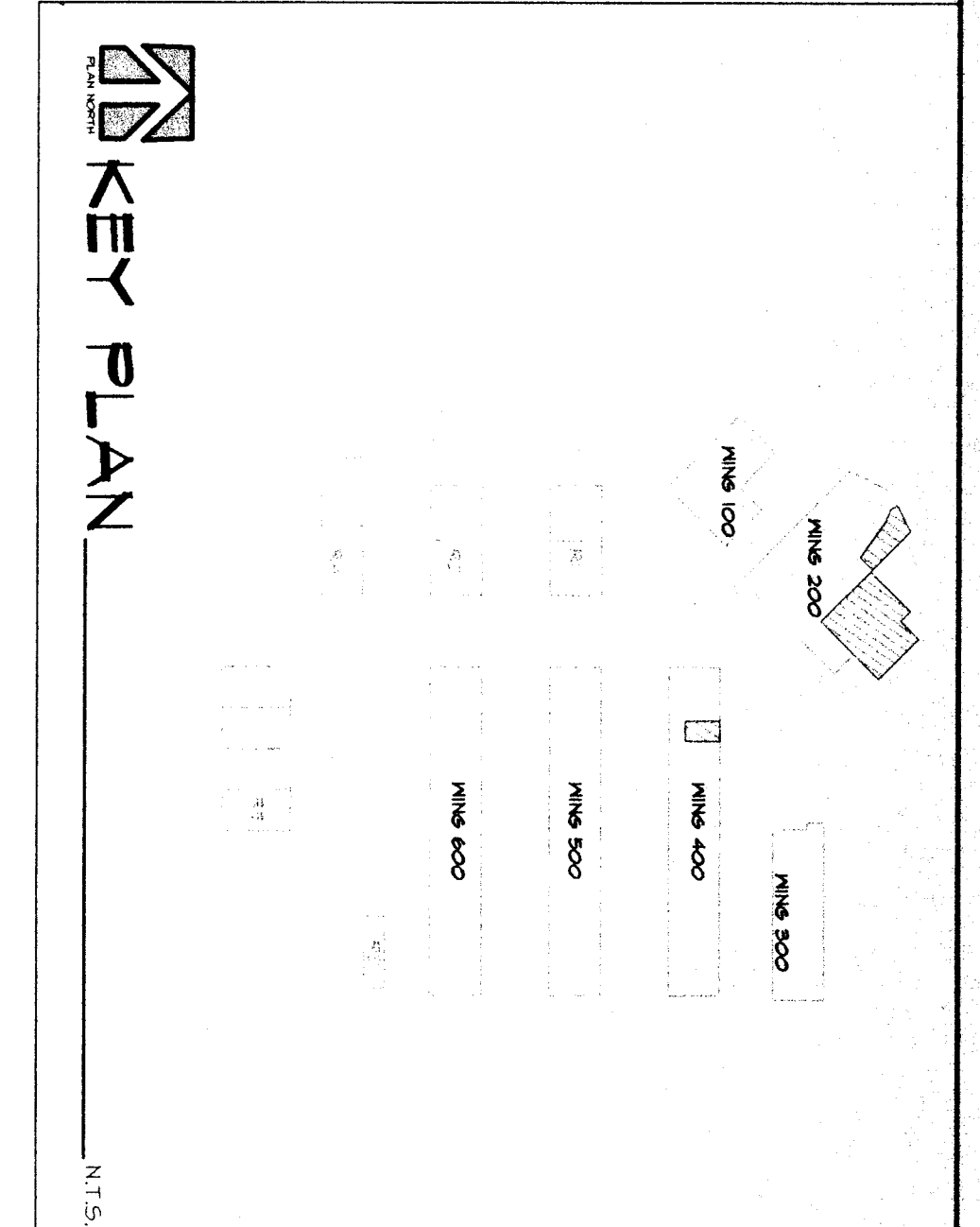


B PARTIAL FLOOR PLAN
MINGS - 200"
SCALE: W - 1/16"



C PARTIAL FLOOR PLAN
MINGS - 200 ALT BID #415
SCALE: W - 1/16"

- ### KEYNOTES
- 304 SLABUT AND REMOVE (B) CONC. AS SHOWN FOR
 - 305 CONC. INDICATED
 - 306 DEVO (B) WALL FINISH AS SHOWN FOR
 - 307 FLOOR FINISH AS SHOWN FOR
 - 308 TO REMOVE A SLOTTED TRANSITION TO
 - 309 PAINT KITCHEN FRAMES, AMBS. AND HALLS
 - 310 PAINT CABINETS AND CORNERS FOR
 - 311 SEE INTERIOR ELEVATIONS
 - 312 STORAGE CABINETS
 - 313 CARTRIDGE CABINETS
 - 314 BOOK SHELVES
 - 315 MAINTENANCE TO MATCH (B)
 - 316 WALL FINISH TO MATCH (B)
 - 317 MAGAZINE RACK
 - 318 INSULATION CLOSET
 - 319 PROTECTION SCREEN
 - 320 SOLID PLASTIC PARTITIONS
 - 321 PLUMBING FINISHES - SEE PLUMBING SHEETS
 - 322 PACTIC AND MATCH CONC. SLAB AS REQUIRED FOR WORK INDICATED
 - 323 NOT USED
 - 324 UPPER CABINETS - SEE INTERIOR ELEVATION
 - 325 NOT USED



ALTERNATES

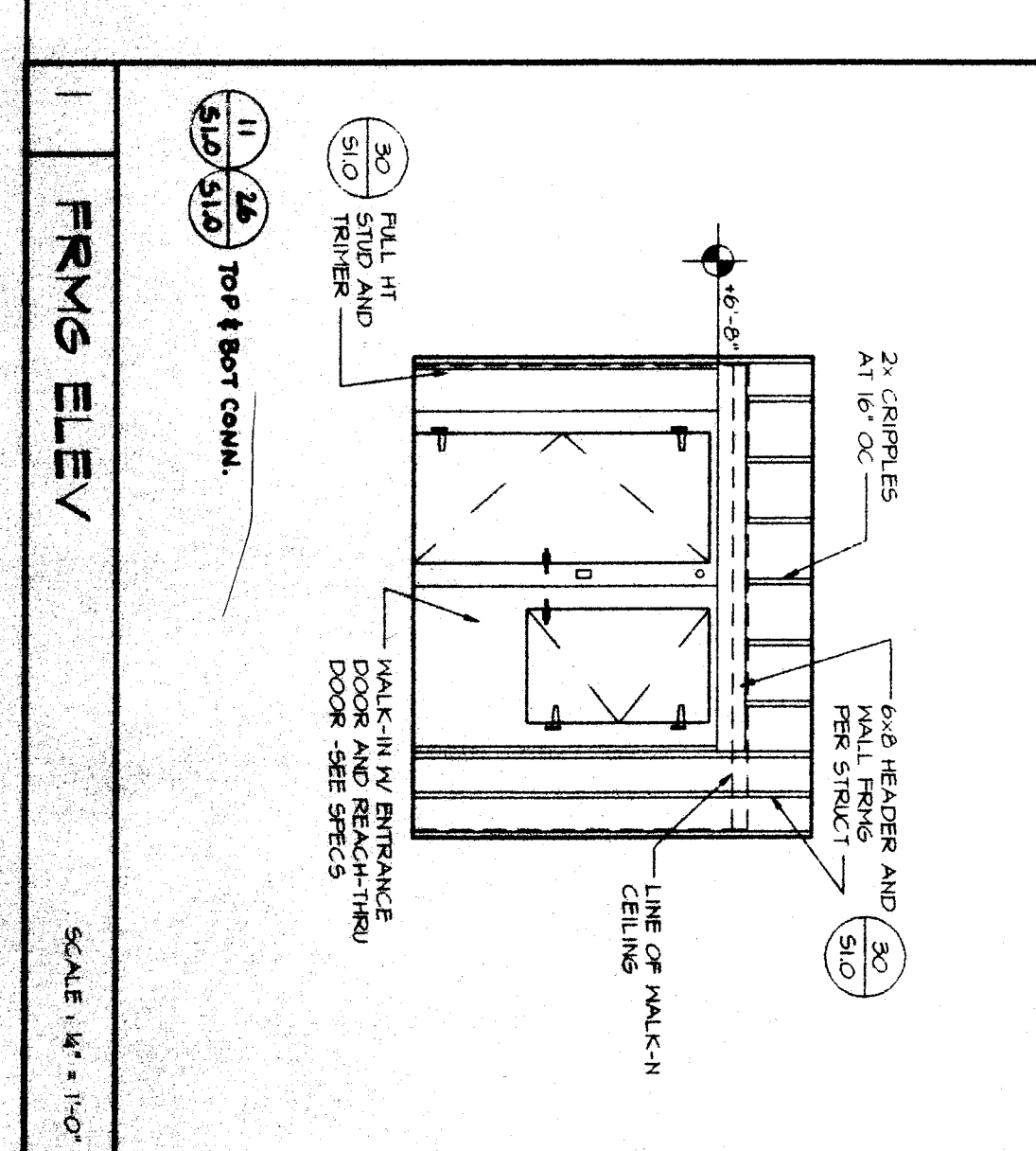
ALTERNATE 1 - DEDUCTIVE

EXCEPTION: ALL (B) TOILET EQUIPMENT SHALL BE REMOVED FROM ROOM 209 FOR THE PURPOSE OF THE REFINISHING OF (B) ADJACENT FLOORING. REMOVAL SHALL BE REINSTALLED AS SHOWN TO INCLUDE BUT NOT LIMITED TO: TOILET, SINK, TUB, SHOWER, AND SINK. ALL REMOVED ITEMS SHALL BE REINSTALLED AS SHOWN FOR INTERIOR FINISHES AND ELECTRICAL FINISHES. SEE PLUMBING SHEETS AND ELECTRICAL SHEETS FOR DETAILS.

ALTERNATE 4 - DEDUCTIVE

EXCEPTION: ALTERNATE 40 AND 40 NOT BE ACCEPTED TOGETHER.
 40. DELETE CONC. AS INDICATED FOR ROOM NO. 202, 202, 203, 204, 205, 207 AND 208.
 40. DELETE DEPENDENT ALT FROM INDICATED TO REMOVE AND INSTALL HATCHWAYS AS SHOWN ON STAGE IN ROOM NO. 201.

EXCEPTION: ALL WORK SHALL BE REINSTALLED FOR THE PURPOSE OF INSTALLING FLOORING PER THE FINISH SCHEDULE IN ROOM NO. 205 SHALL REMAIN IN ROOM NO. 205 TO INCLUDE BUT NOT LIMITED TO: THE DEVO OF (B) STAIRS, WALLS, CEILING AND THE FINISH BACK TO MATCH (B) AS REQUIRED. REMOVED UNDER SEPARATE CONTRACT.



RUTH HARDING SCHOOL
MODERNIZATION
3201 PICO AVE.
FOR
BAKERSFIELD CITY SCHOOL DISTRICT
BAKERSFIELD, KERN COUNTY, CALIFORNIA

SCA Architect, Inc.
1301 L Street
Bakersfield, CA 93301
(661) 327-1632

KEY PLAN

3.0

10 OF 3 SHEETS

DATE: 08/04/2014

108 NO. 967

DRAWN: [Signature]

CHECKED: [Signature]

DATE: 08/04/2014

MARK DATE REVISIONS

1 11/20/14 2-1-14

2 11/20/14 2-1-14

11/20/14 2-1-14

11/20/14 2-1-14

11/20/14 2-1-14