

TYPICAL DEMO NOTES

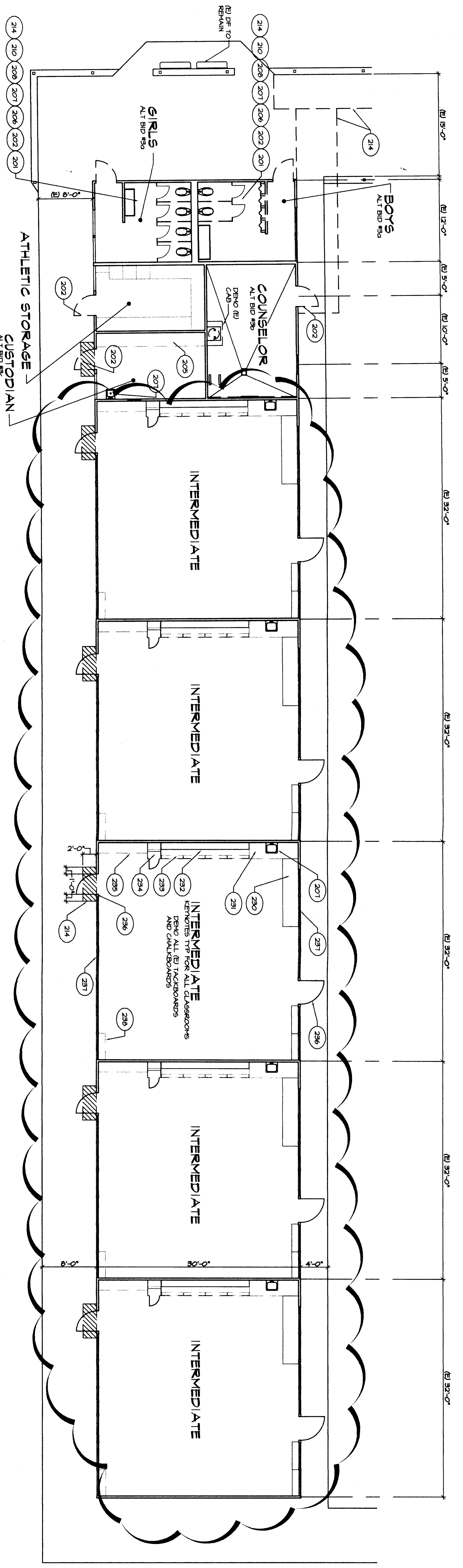
- 1) COORDINATE DEMO (B) PLUMBING, ELECTRICAL, AND MECHANICAL SYSTEMS TO WORK SCHEDULED IN THIS CONTRACT DEMO AS REQUIRED.
- 2) DEMO (B) WORK AS SHOWN FOR ALL WORK.
- 3) DEMO (B) WORK AS SHOWN FOR ALL WORK EXCEPT AS NOTED.
- 4) DEMO (B) WORK, TILE FLOORING, PARTITIONS, AND CEILING JOINTS, REFER TO SECTION AS NOTED AND RELATED CLAS PLANS FOR ADDITIONAL INFORMATION.
- 5) REMOVE (B) PLUMBING AS INDICATED. SEE PLUMBING AND MECHANICAL SCHEDULES FOR DEMO WORK SCHEDULED IN THIS CONTRACT DEMO.

DEMO LEGEND

- == DEMO (B) WALL
- DEMO (B) WALL TO REMAIN

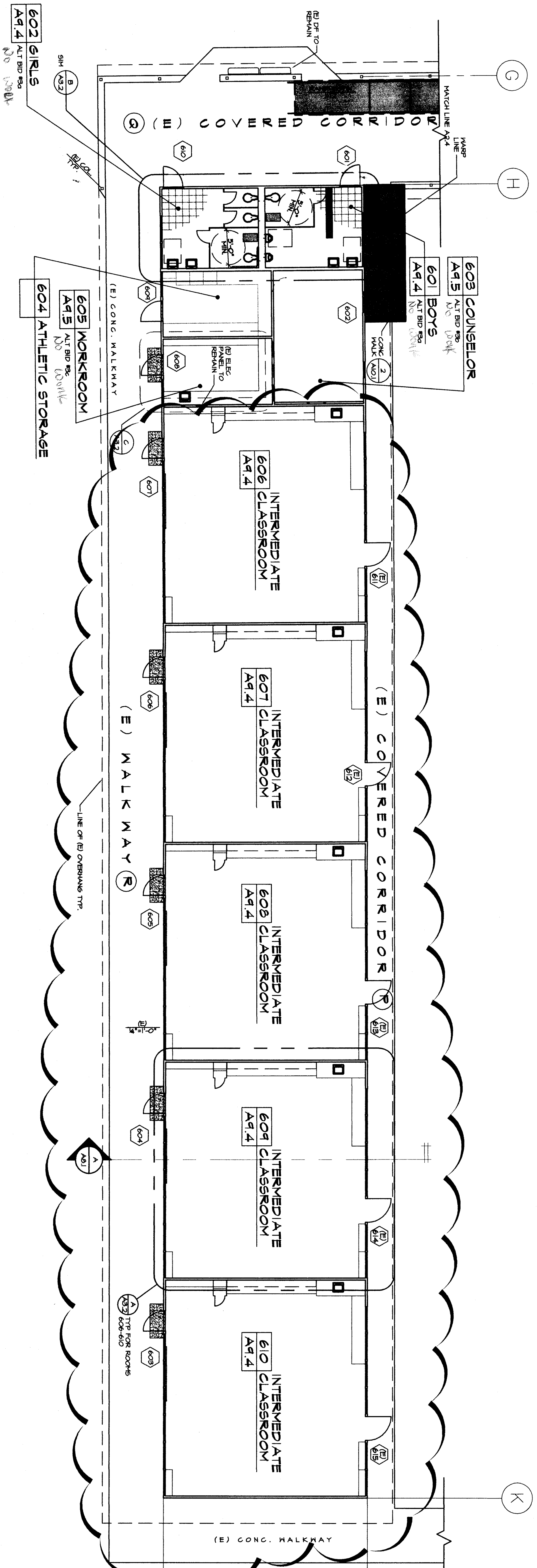
KEYNOTES

- 200 DEMO (B) WALL
- 201 DEMO (B) DOOR FRAME & THRESHOLD
- 202 DEMO (B) DOOR FRAME & THRESHOLD ENLARGE
- 203 DEMO (B) DOOR FRAME & THRESHOLD ENLARGE
- 204 DEMO (B) WINDOW
- 205 DEMO (B) CABINETS
- 206 DEMO (B) TOILET PARTITIONS
- 207 DEMO (B) PLUMBING (EXCEPT) SEE PLUMBING AND MECHANICAL SCHEDULES FOR ADDITIONAL INFORMATION.
- 208 DEMO (B) ACCESSORIES
- 209 TO INCLUDE BUT NOT LIMITED TO: PAINT, TONGUE AND GROOVE CABINETS, SHELVES, DRAWERS, DOORS, TRACKS, BOARDS, TOILET PARTITIONS, PARTITIONS, PARTITION PARTITIONERS AND CAP PARTITIONERS.
- 210 DEMO (B) ASPHALT TILE AND KITING
- 211 DEMO (B) TILE AND BASE
- 212 DEMO (B) ALUMINUM PART. SLABS, DOORS AND HOME
- 213 DEMO (B) VUL. LATH AND PLASTER
- 214 DEMO (B) EXPOSED FIN
- 215 DEMO (B) DEMO (B) CONG. AS REPT. FOR
- 216 DEMO (B) VUL. LATH AND PLASTER
- 217 PAINT FINISHES, JAMB, AND MULLIONS
- 218 BASE CABINET IN CONNECTION
- 219 SEE INTERIOR ELEVATIONS
- 220 STORAGE CABINETS
- 221 COMPUTER CABINETS
- 222 BOOK SHELVES
- 223 MAKE-UP BACK
- 224 INSTRUCTIONS CLOSET
- 225 PROTECTION SCREEN
- 226 DEMO (B) SHELF AND POLE
- 227 DEMO (B) SHELF AND POLE
- 228 DEMO (B) SHELF AND POLE
- 229 DEMO (B) SHELF AND POLE
- 230 DEMO (B) SHELF AND POLE
- 231 DEMO (B) SHELF AND POLE
- 232 DEMO (B) SHELF AND POLE
- 233 DEMO (B) SHELF AND POLE
- 234 DEMO (B) SHELF AND POLE
- 235 DEMO (B) SHELF AND POLE
- 236 DEMO (B) SHELF AND POLE
- 237 DEMO (B) SHELF AND POLE
- 238 DEMO (B) SHELF AND POLE
- 239 DEMO (B) SHELF AND POLE
- 240 DEMO (B) SHELF AND POLE
- 241 DEMO (B) SHELF AND POLE
- 242 DEMO (B) SHELF AND POLE
- 243 DEMO (B) SHELF AND POLE
- 244 DEMO (B) SHELF AND POLE
- 245 DEMO (B) SHELF AND POLE
- 246 DEMO (B) SHELF AND POLE
- 247 DEMO (B) SHELF AND POLE
- 248 DEMO (B) SHELF AND POLE
- 249 DEMO (B) SHELF AND POLE
- 250 DEMO (B) SHELF AND POLE



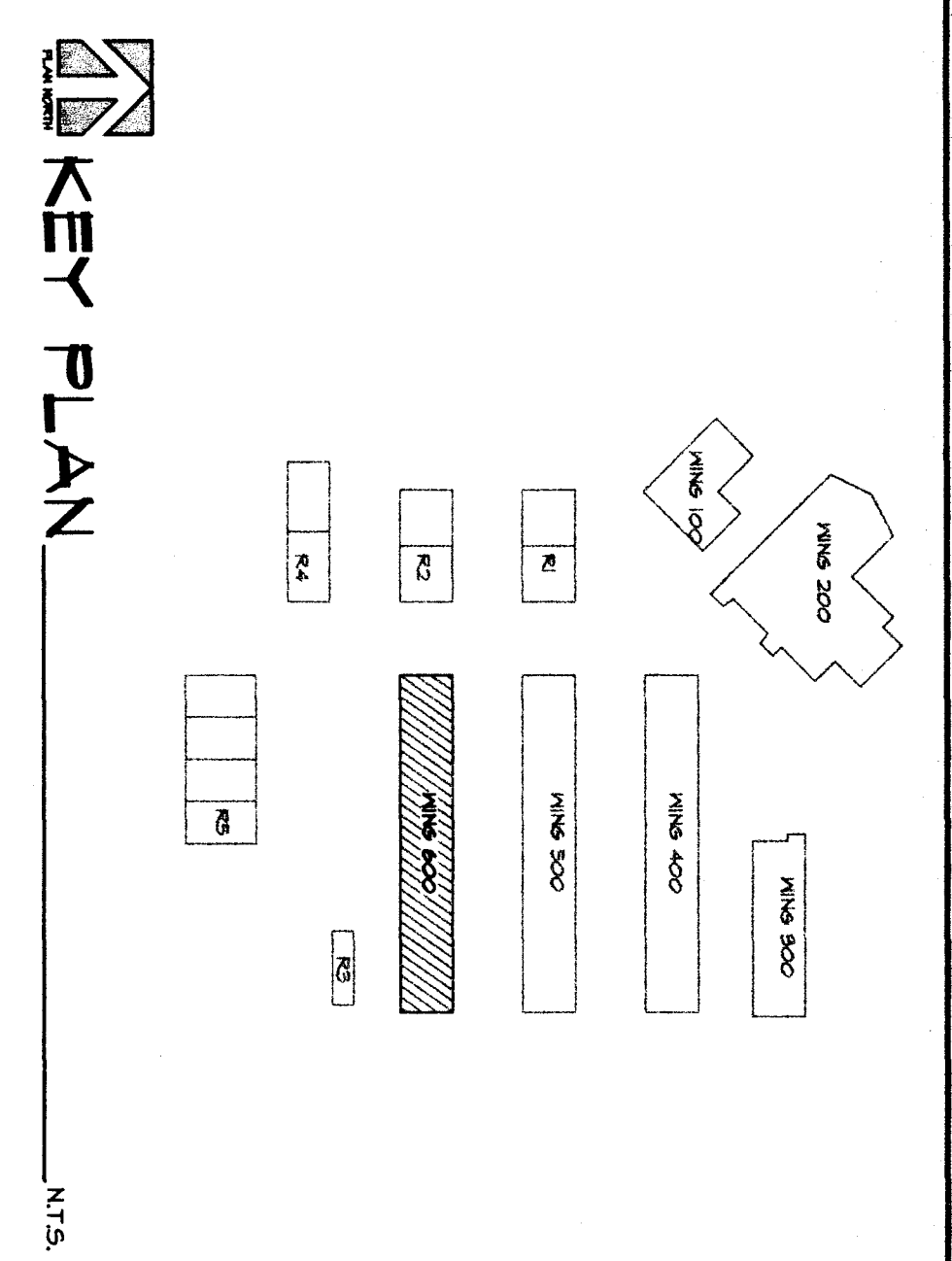
DEMOLITION FLOOR PLAN

SCALE: 1/4" = 1'-0"



FLOOR PLAN - WING 600

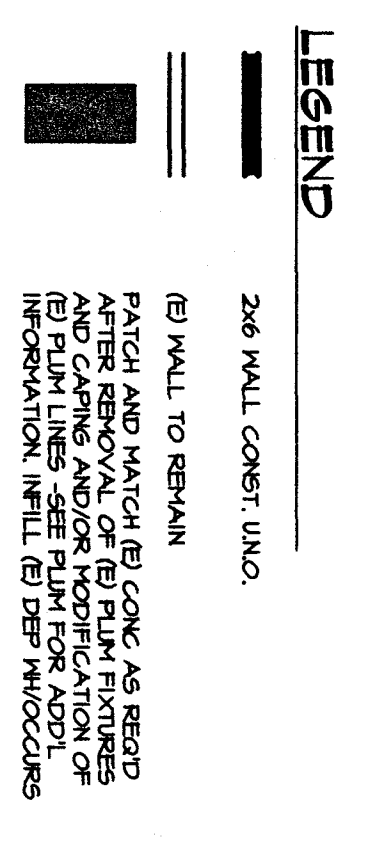
SCALE: 1/4" = 1'-0"



ALTERNATES

ALTERNATE 3 - DEDICATIVE

- a. DELETE: WORK AS INDICATED FOR ROOM NO. 402 AND 403
- b. DELETE: WORK AS INDICATED FOR ROOM NO. 20 TO INCLUDE ALL WORK
- c. DELETE: WORK AS INDICATED FOR ROOM NO. 20 TO INCLUDE ALL WORK
- d. DELETE: WORK AS INDICATED FOR ROOM NO. 20 TO INCLUDE ALL WORK



NOTE
ALL CONCRETE SHALL BE A MINIMUM COMPRESSIVE STRENGTH OF 3000 PSI (28 DAYS) UNLESS OTHERWISE SPECIFIED.
REFER TO DRAWING SHEET A-5, WING 600.
SHEET A-5 IS IN FULL ENTIRETY.
SHEET A-5 IS PROVIDED TO THIS DOCUMENT FOR INFORMATION ONLY.

MARK	DATE	REVISIONS

RUTH HARDING SCHOOL
MODERNIZATION
3201 PICO AVE.
FOR
BAKERSFIELD CITY SCHOOL DISTRICT
BAKERSFIELD, KERN COUNTY, CALIFORNIA

REGISTERED ARCHITECT
OFFICE OF REGULATION SERVICES
4474 031.02156
414 15.6
DATE: 08/19/03
PN: N/A

ARCHITECT

ROLI TRACY
2045 KENNEDY RD. (A) 93301
PH: (661) 327-4632
FAX: (661) 327-2339

ADDENDUM #01
RUTH HARDING SCHOOL
MODERNIZATION
BAKERSFIELD CITY SCHOOL DISTRICT
BAKERSFIELD, CALIFORNIA
DRAW NO. 5

DEMOMON FLOOR PLAN

JOB NO. 957.1
DRAWN BY BRINT
CHECKED BY
DATE: 08/19/03
2.5
1 OF 31 SHEETS