

TYPICAL DEMO NOTES

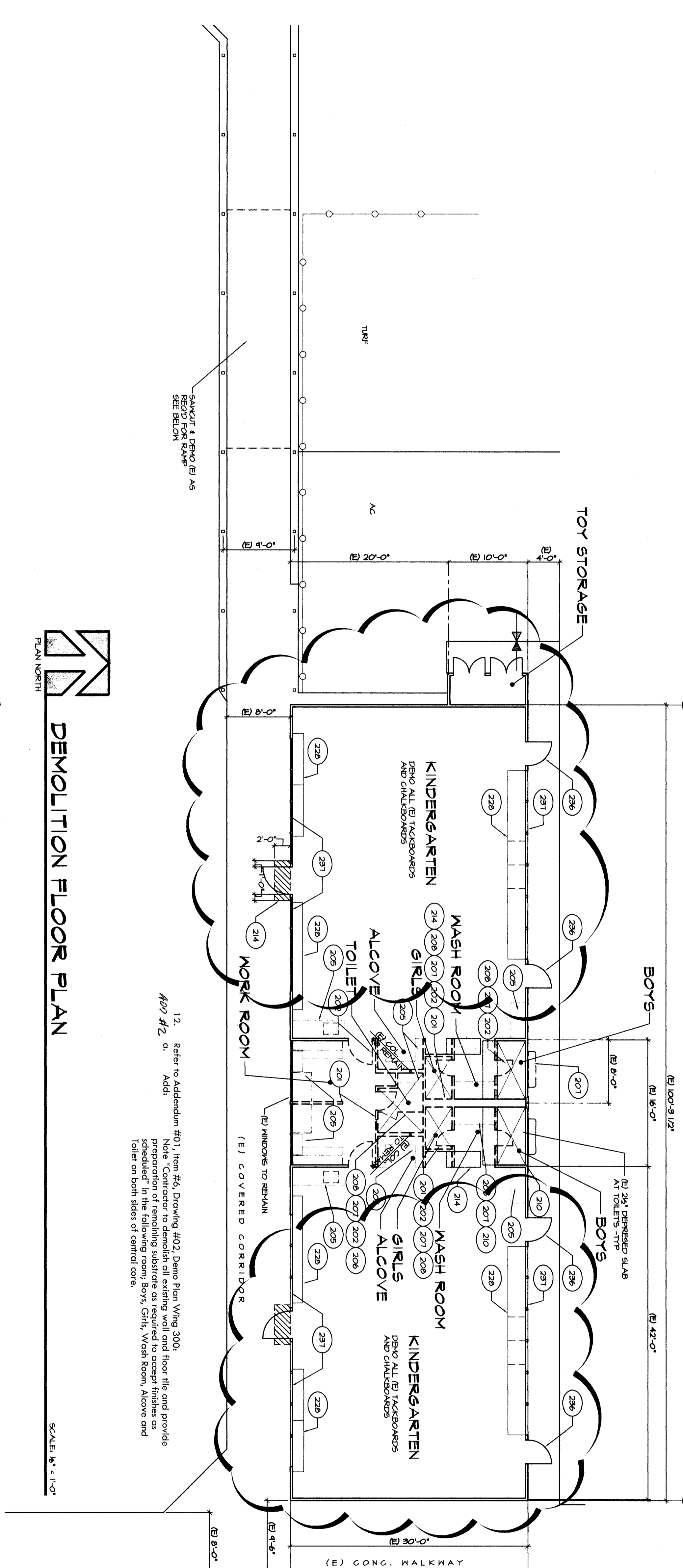
- 1) DEMO ALL EXTERIOR DOORS & FRAMES. SEE DOOR SCHEDULE.
- 2) COORDINATE DEMO OF PLUMBING, ELECTRICAL, & MECHANICAL WITH CONTRACTOR DEMO AS REQUIRED.
- 3) SAW CUT & REMOVE EXISTING SLABS AS SHOWN FOR NEW WORK IN RESTROOMS, TOILETS, & NURSE RM.
- 4) DEMO EXISTING TILE FLOORINGS.
- 5) DEMO EXISTING PARTITIONS, AND CEILING JOISTS PER ALL SECTIONS AND REFLECTED CLG PLANS FOR ALL SECTIONS AND REFLECTED CLG PLANS.
- 6) REMOVE EXISTING AS INDICATED. SEE PLUMBING PLANS. SAW CUT TO ACCEPT WORK SCHEDULE. SEE SHEET PLAN.

DEMO LEGEND

- ===== DEMO EX WALL
- ===== EX WALL TO REMAIN
- ===== SAW CUT BY SLAB TO MATCH EX DEPRESSION

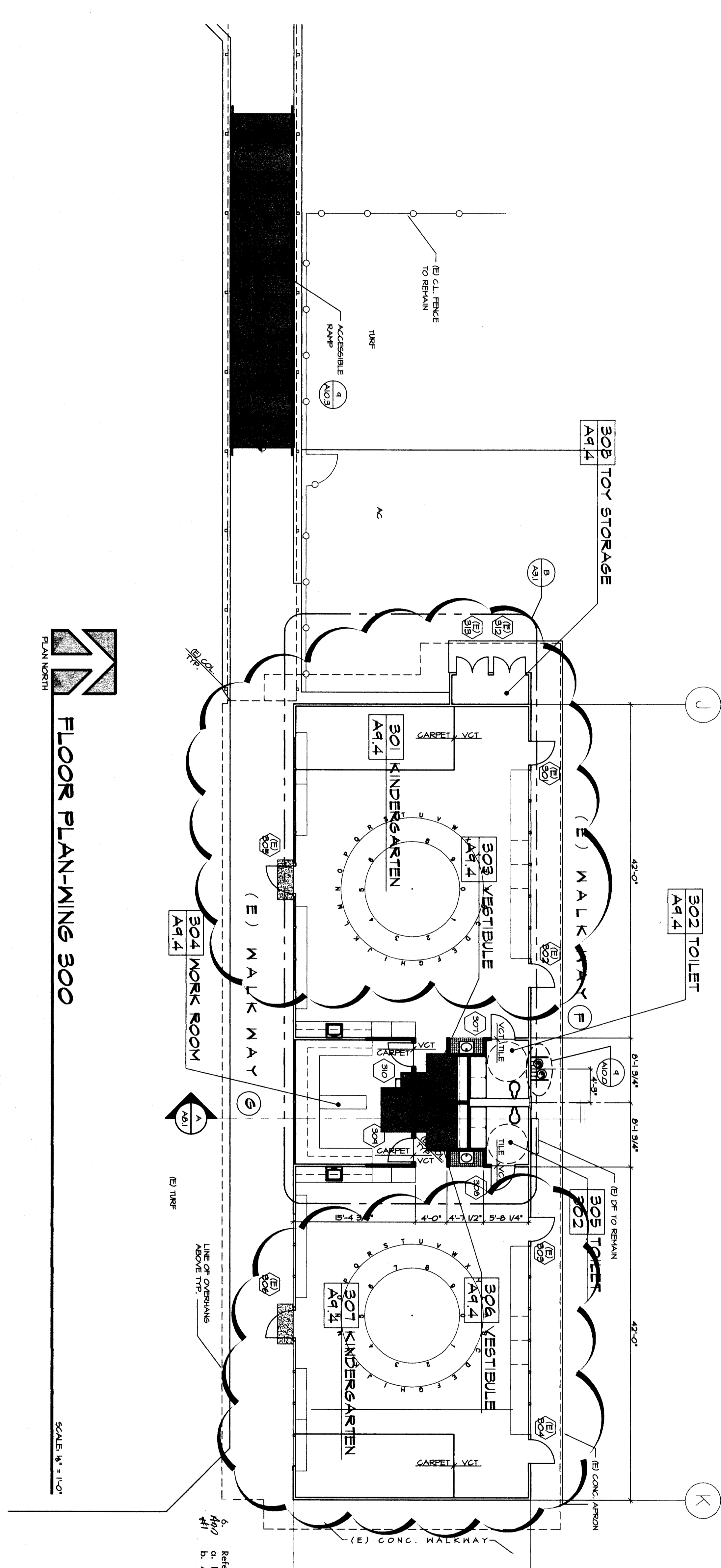
KEYNOTES

- 200 DEMO EX WALL
- 201 DEMO EX DOOR FRAME & THRESHOLD
- 202 DEMO EX DOOR FRAME, L. THRESHOLD & REVERSE OPENING FOR SCHEDULED DOOR AND FRAME
- 203 DEMO EX WINDOW
- 204 DEMO EX WINDOW
- 205 DEMO EX CABINETS
- 206 DEMO EX TOILET PARTITIONS
- 207 DEMO EX PLUMBING PARTITION - SEE PLAN
- 208 DEMO EX PARTITION - SEE PLAN
- 209 DEMO EX PARTITION - SEE PLAN
- 210 DEMO EX PARTITION - SEE PLAN
- 211 DEMO EX PARTITION - SEE PLAN
- 212 DEMO EX PARTITION - SEE PLAN
- 213 DEMO EX PARTITION - SEE PLAN
- 214 DEMO EX PARTITION - SEE PLAN
- 215 DEMO EX PARTITION - SEE PLAN
- 216 DEMO EX PARTITION - SEE PLAN
- 217 DEMO EX PARTITION - SEE PLAN
- 218 DEMO EX PARTITION - SEE PLAN
- 219 DEMO EX PARTITION - SEE PLAN
- 220 DEMO EX PARTITION - SEE PLAN
- 221 DEMO EX PARTITION - SEE PLAN
- 222 DEMO EX PARTITION - SEE PLAN
- 223 DEMO EX PARTITION - SEE PLAN
- 224 DEMO EX PARTITION - SEE PLAN
- 225 DEMO EX PARTITION - SEE PLAN
- 226 DEMO EX PARTITION - SEE PLAN
- 227 DEMO EX PARTITION - SEE PLAN
- 228 DEMO EX PARTITION - SEE PLAN
- 229 DEMO EX PARTITION - SEE PLAN
- 230 DEMO EX PARTITION - SEE PLAN
- 231 DEMO EX PARTITION - SEE PLAN
- 232 DEMO EX PARTITION - SEE PLAN



DEMOLITION FLOOR PLAN

12. Refer to Addendum #01, Item #6, Drawing #02, Demo Plan Wing 300. Note: Contractor to demolish all existing wall and floor tile and provide preparation of remaining structure as required to accept finishes as shown on this drawing. See 97% SH, V558 Room, Alcove and Toilet on both sides of central core.



FLOOR PLAN-WING 300

LEGEND

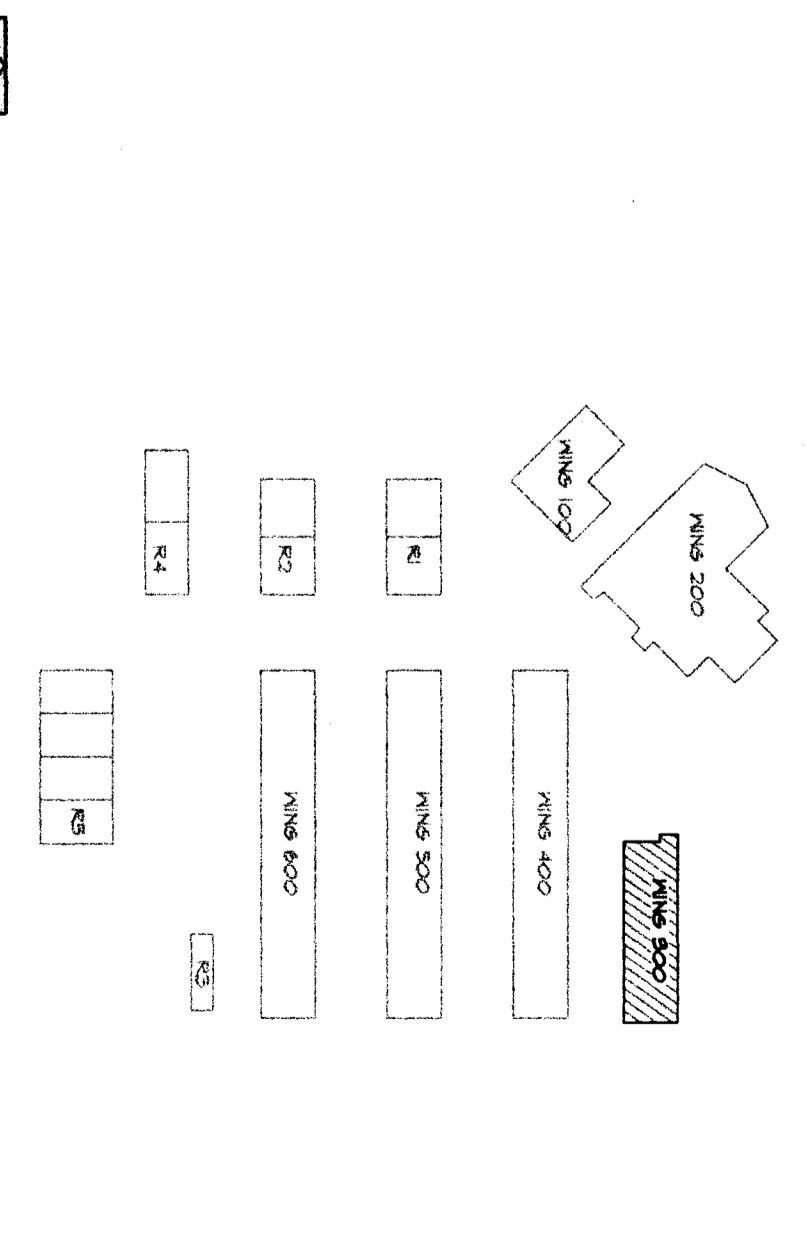
- ===== 2x6 WALL CONCR. UNCL.
- ===== EX WALL TO REMAIN
- ===== PLUMBING AND MECHANICAL AS SHOWN FOR NEW WORK IN RESTROOMS, TOILETS, & NURSE RM.
- ===== SAW CUT BY SLAB TO MATCH EX DEPRESSION
- ===== INFORMATION, INCL. EX DEPARTMENTS TO BE INSTALLED

Refer to Drawing Sheet A2.2, Demo Plan/Floor Plan - Wing 300. Sheet A2.2 in its entirety. Sheet A2.2, to be attached to this addendum. (addendum drawing #2).

NOTE

THIS CONTRACT SET WITH THE CONTRACTOR SHALL BE MAINTAINED BY THE CONTRACTOR. THE CONTRACTOR SHALL BE RESPONSIBLE FOR THE PROTECTION OF ALL UTILITIES AND STRUCTURES TO REMAIN. SEE SHEET A2.2 FOR MORE INFORMATION.

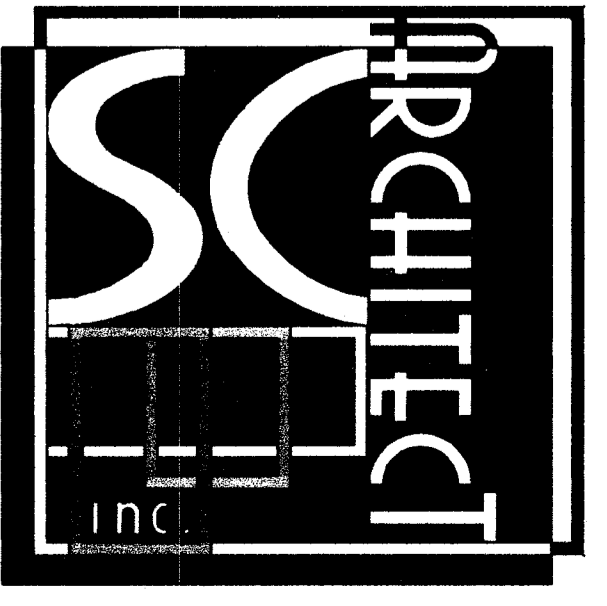
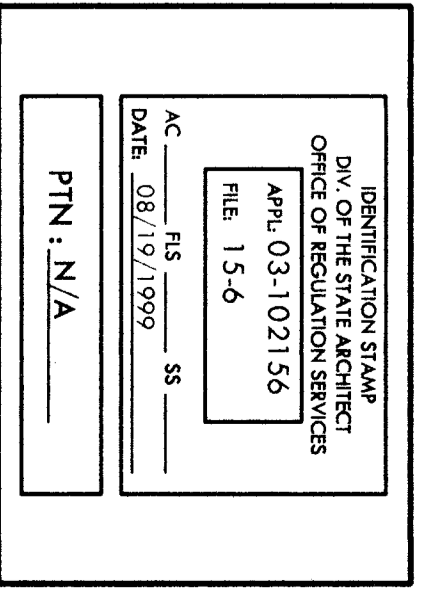
KEY PLAN



N.T.S.

MARK	DATE	REVISIONS

RUTH HARDING SCHOOL MODERNIZATION
 3201 PICO AVE.
 FOR BAKERSFIELD CITY SCHOOL DISTRICT
 BAKERSFIELD, KERN COUNTY, CALIFORNIA



301 L STREET
 BAKERSFIELD, CA 93301
 PH: (661) 327-1632
 FAX: (661) 327-2339

ADDENDUM #01	
RUTH HARDING SCHOOL MODERNIZATION	
BAKERSFIELD CITY SCHOOL DISTRICT	
BAKERSFIELD, CALIFORNIA	
ISSUE NO.	DATE
2	9/11/03

DEMOPLAN/
 FLOOR PLAN