

TYPICAL DEMO NOTES

- 1) COORDINATE DEMO WITH PLUMBING, ELECTRICAL, AND MECHANICAL TRADES CONTRACTORS AS REQUIRED.
- 2) REMOVE AND DEMO CONCRETE SLABS AS SHOWN.
- 3) DEMO AND REMOVE ALL PARTITIONS, TEACHERS, AND CEILING LIGHTS FOR ADOPT. INTERIOR INFORMATION.
- 4) DEMO AND REMOVE ALL PARTITIONS, TEACHERS, AND CEILING LIGHTS FOR ADOPT. INTERIOR INFORMATION.
- 5) REMOVE ALL PLUMBING AS INDICATED. SEE PLUMBING SCHEDULE FOR ACCEPT WORK SCHEDULE. SEE SHEET PL-300.

DEMO LEGEND

- DEMO (E) WALL
- (E) WALL TO REMAIN
- SAVING (E) SLAB TO MATCH (E) DEPRESSION

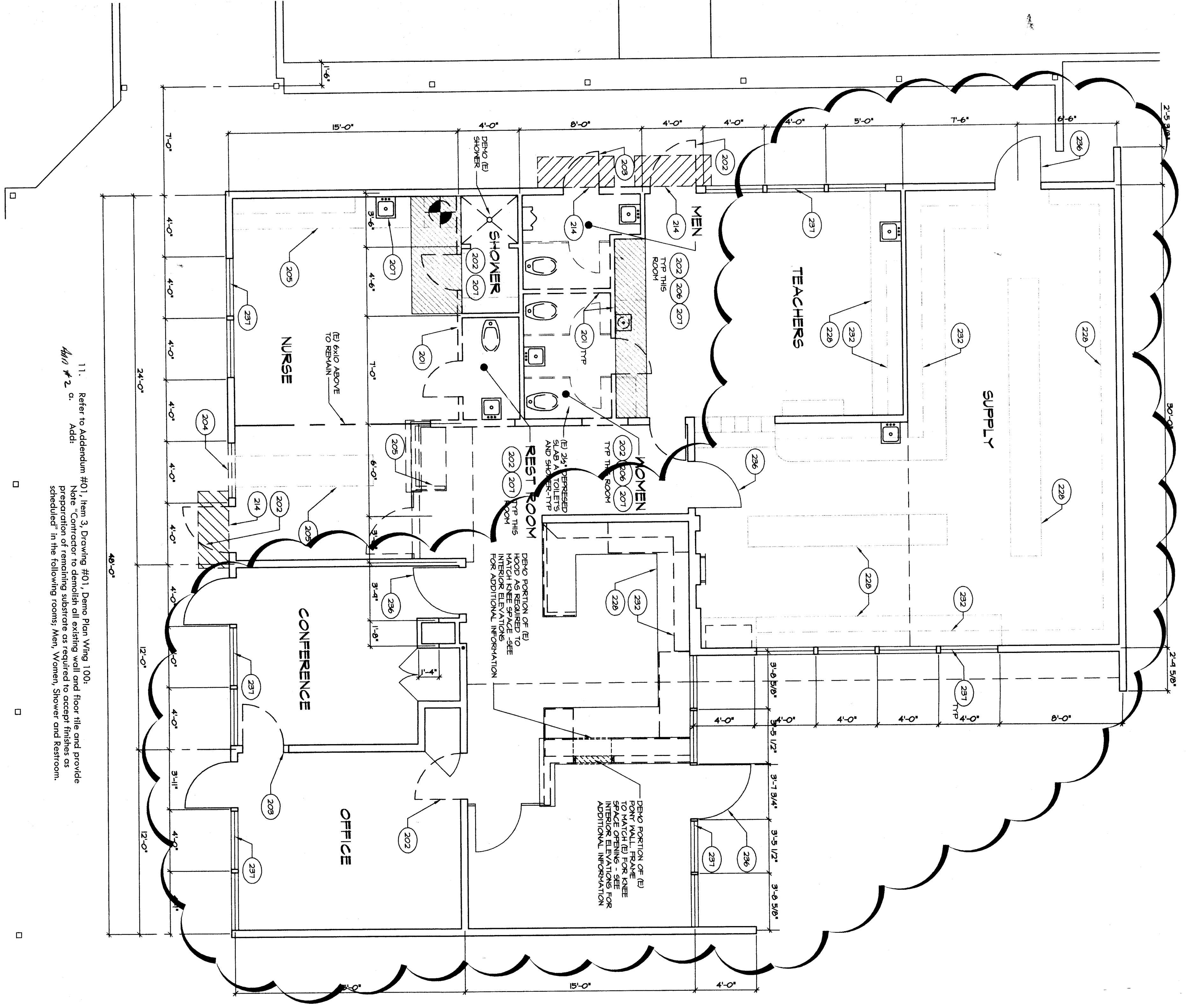
ALTERNATES

- ALTERNATE 5 - DESTRUCTIVE
1. SEE SHEET 105, 104, 107, 108, 109 & 110

KEYNOTES

- 201 DEMO (E) WALL
- 202 DEMO (E) DOOR FRAME & THRESHOLD
- 203 DEMO (E) DOOR FRAME, 1 THRESHOLD ENLARGE OPENING FOR SCHEDULED DOOR AND FRAME
- 204 DEMO (E) WINDOW(S)
- 205 DEMO (E) CABINETS
- 206 DEMO (E) DOOR PARTITIONS
- 207 DEMO (E) PLASTER FINISHES, SEE PLUMBING SCHEDULE FOR ADOPT. INTERIOR INFORMATION
- 208 DEMO (E) ACCESSORIES TO INCLUDE BUT NOT LIMITED TO: PAPER TOWEL BASKETS, REFRIGERATORS, SINKS, DISHWASHERS, BENCHES, VANES, BOARDS, TUBS, SINKS, TOILET PAPER DISPENSERS, TRENCH MARKIN DISPENSERS AND CUP DISPENSERS, COFFIN STRIPPERS AND CUP DISPENSERS
- 209 DEMO (E) ASPHALT TILE AND RISER
- 210 DEMO (E) TILE AND BASE
- 211 DEMO (E) ALUM. SINK, RT. 6" x 6" DOORS AND HOOKS
- 212 DEMO (E) WALL LATH AND PLASTER
- 213 DEMO (E) EXHAUST FAN
- 214 REMOVE AND DEMO (E) CONCRETE AS SHOWN FOR CONCRETE TO BE RECAST
- 215 DEMO (E) WALL FINISH AS SHOWN FOR CONCRETE TO BE RECAST
- 216 PATCH AND MATCH CONCRETE SLAB AS REQUIRED
- 217 PAINT WINDOW FRAMES, JAMB, AND MULLIONS
- 218 BASE CABINET BY CONTINENTAL
- 219 SEE INTERIOR ELEVATIONS
- 220 STORAGE CABINETS
- 221 COMPUTER CABINETS
- 222 BOOK SHELVES
- 223 MACHINE BACK
- 224 INSTRUMENTS CLOSET
- 225 PROTECTION SCREEN (E) WALL
- 226 SOLID PLASTIC PARTITIONS (E) WALL
- 227 PLUMBING FINISHES - SEE PLUMBING SHEETS FOR WORK INDICATED
- 228 PATCH AND MATCH CONCRETE SLAB AS REQUIRED
- 229 UPPER CABINETS - SEE INTERIOR ELEVATION
- 230 DEMO (E) CONTRIBUTOR BASE CABINET TO REMAIN (N.O.) REPAIR BASE CAB TO RECEIVE CONTRIBUTOR. SEE FLOOR PLAN
- 231 DEMO (E) CONTRIBUTOR (N.O.)
- 232 DEMO (E) UPPER CABINETS TO REMAIN
- 233 DEMO (E) BASE & PAINT TRAYS
- 234 DEMO (E) BASE CAB TO RECEIVE CONTRIBUTOR
- 235 DEMO (E) INSTRUMENTS CLOSET TO REMAIN
- 236 DEMO (E) SHELF AND POLE
- 237 DEMO (E) DOOR TO REMAIN PREP AS REQUIRED FOR DOOR HARDWARE
- 238 DEMO (E) DOOR TO REMAIN
- 239 DEMO (E) ROCK CASE FOR SCHEDULED WORK. SEE ELECTRICAL SCHEDULE FOR ADOPT. INTERIOR INFORMATION
- 240 DEMO (E) ROCK CASE

DEMO PLAN  
PLAN NORTH WINGS 100

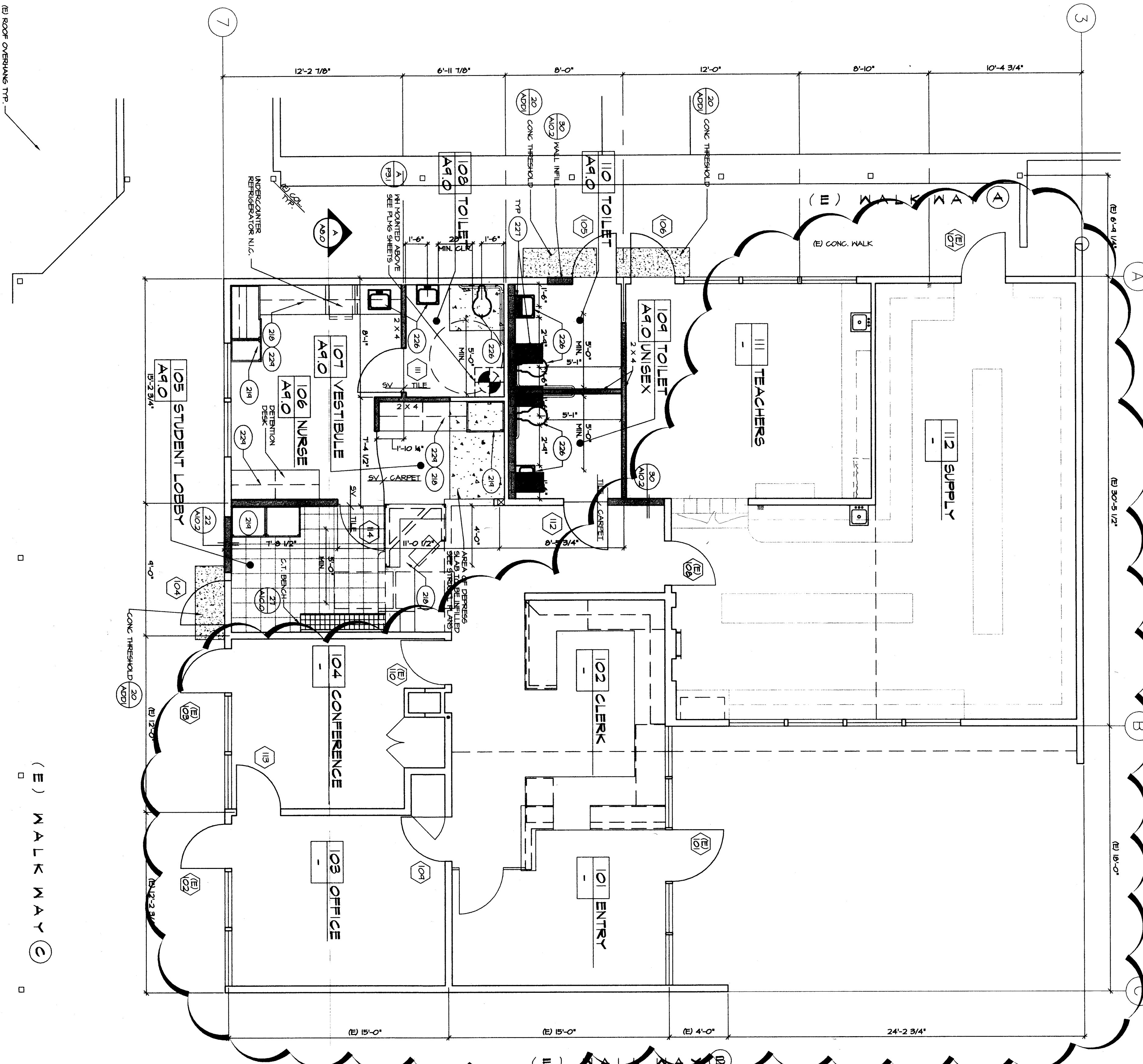


11. Refer to Addendum #01, Item 3, Drawing #01, Demo Plan, Wing 100. Preparation of remaining substrate as required to accept finishes as scheduled in the following rooms: Men, Women, Shower and Restroom.

SCALE: 1/4" = 1'-0"

LEGEND

- 206 WALL, CONCR. UNO.
- (E) WALL TO REMAIN
- (E) WALL TO MATCH (E) CONCRETE SLAB AS REQUIRED AND CARING AND/OR REPAIR OF RECONSTRUCTION. SEE PLUMBING SCHEDULE FOR ADOPT. INTERIOR INFORMATION
- AREA OF (E) DEPRESSED SLAB TO BE MATCHED



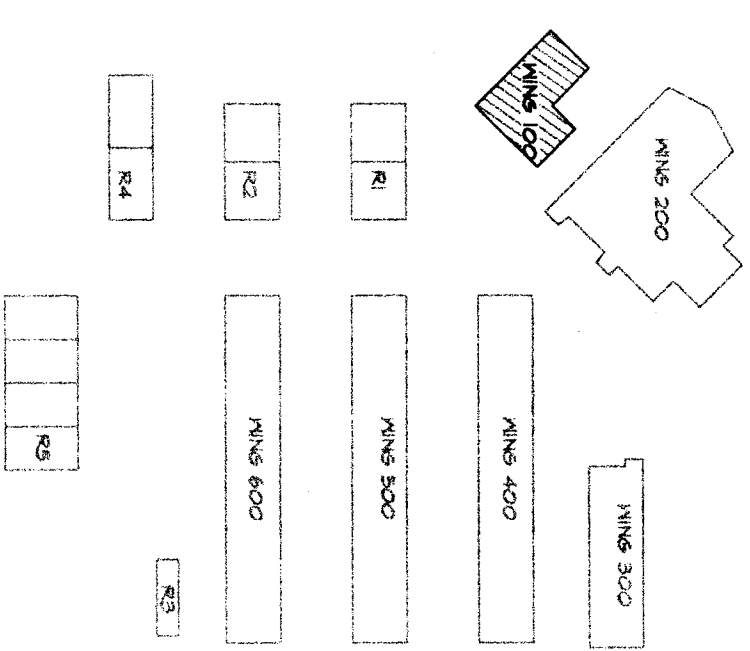
FLOOR PLAN  
PLAN NORTH WINGS 100

NOTE

1. DEMO (E) WALL, SEE A UNIT CONFORMANCE SHEET OF BOOC FOR FINISHES AND 2000 PSI CONCRETE SLAB AT 28 DAYS SEE PLUMBING SCHEDULE FOR ADOPT. INTERIOR INFORMATION.

SCALE: 1/4" = 1'-0"

KEY PLAN



RUTH HARDING SCHOOL  
MODERNIZATION  
3201 PICO AVE.  
FOR  
BAKERSFIELD CITY SCHOOL DISTRICT  
BAKERSFIELD, KERN COUNTY, CALIFORNIA

REGISTRATION STATE  
OFFICE OF REGULATION SERVICES  
JAN. 03-102156  
FEE 15.0  
DATE 08/19/03  
PIN: N/A

ARCHITECT  
BOULDER  
3000 K STREET  
BAKERSFIELD, CA 93301  
PH: (661) 327-6332  
FAX: (661) 327-2339

ADDENDUM #01  
RUTH HARDING SCHOOL  
MODERNIZATION  
BAKERSFIELD, CALIFORNIA  
DRAWN: JAS  
CHECKED: JAS  
DATE: 08/18/03

DEMO PLAN/  
FLOOR PLAN

JOB NO.: 957-1  
DRAWN: BRIST  
CHECKED: JAS  
DATE: 08/18/03  
2.0  
1 OF 31 SHEETS

MARK	DATE	REVISIONS
A		
B		
C		
D		
E		
F		
G		
H		
I		
J		
K		
L		
M		
N		
O		
P		
Q		
R		
S		
T		
U		
V		
W		
X		
Y		
Z		

CHECK AND VERIFY ALL DIMENSIONS BEFORE PROCEEDING WITH THE WORK. REPORT DISCREPANCIES TO THE C.S.C.