

ELECTRICAL OFFICE PLAN

SCALE: 1/8" = 1'-0"

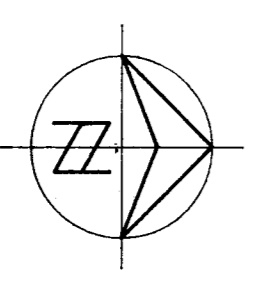
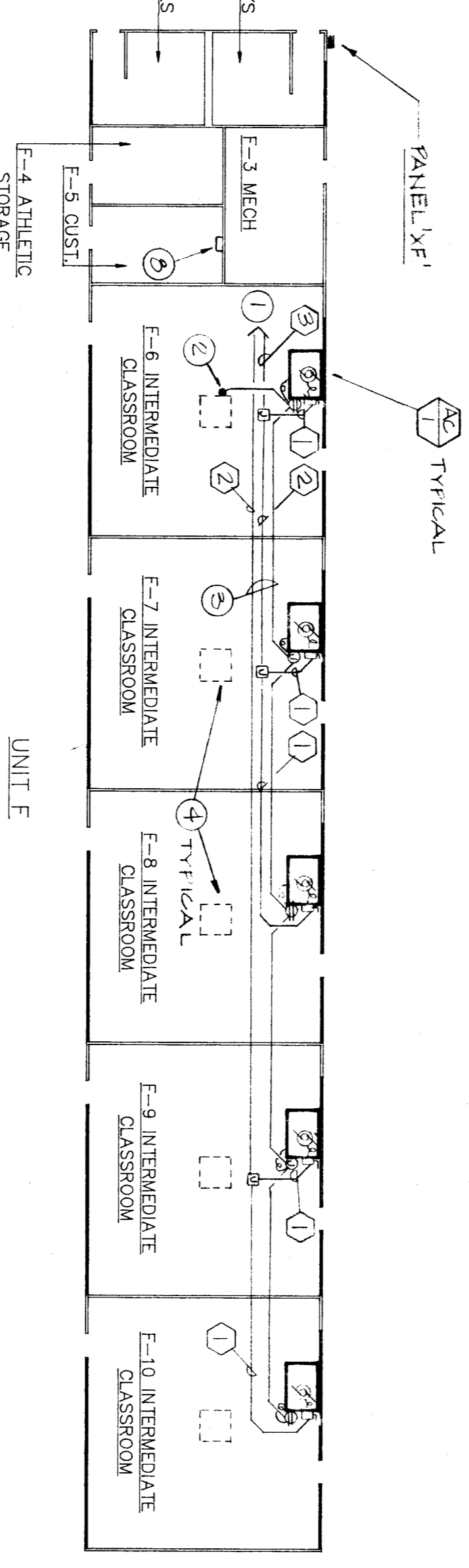
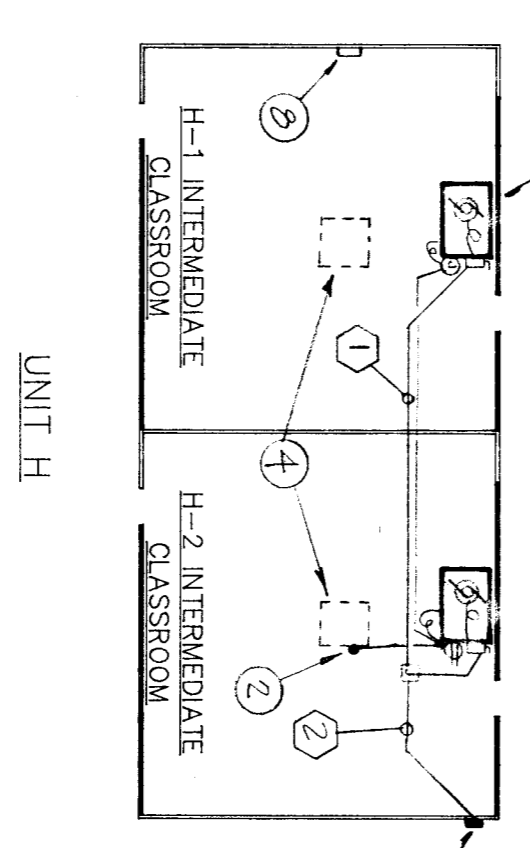
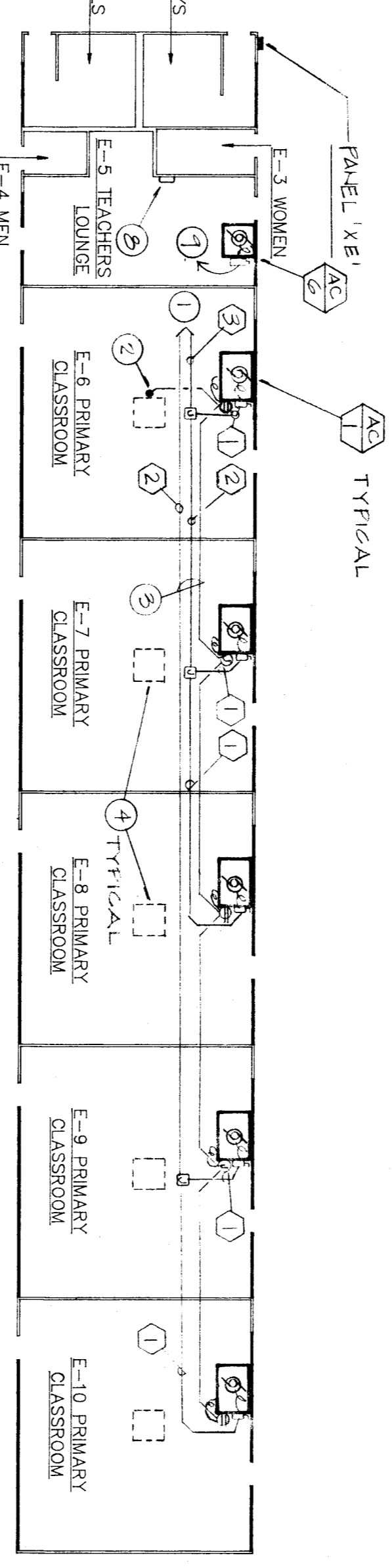
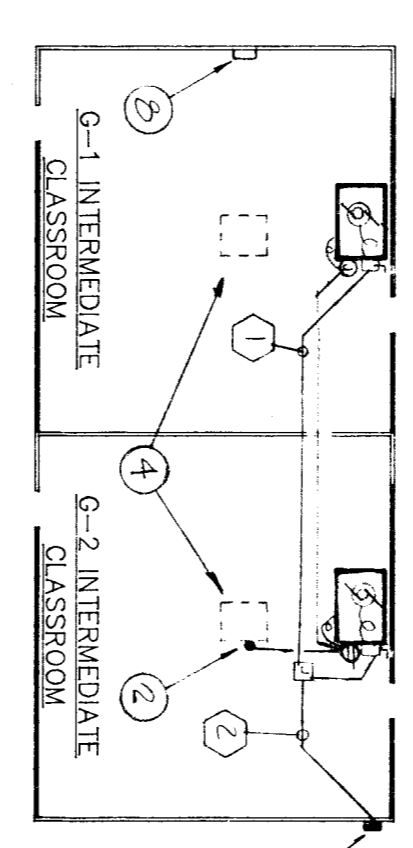
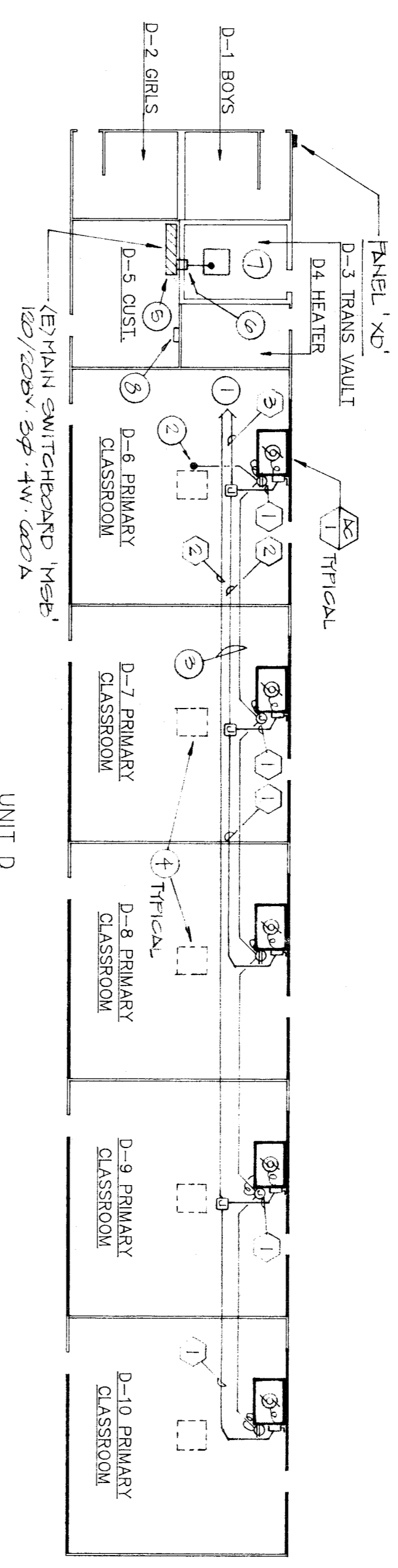
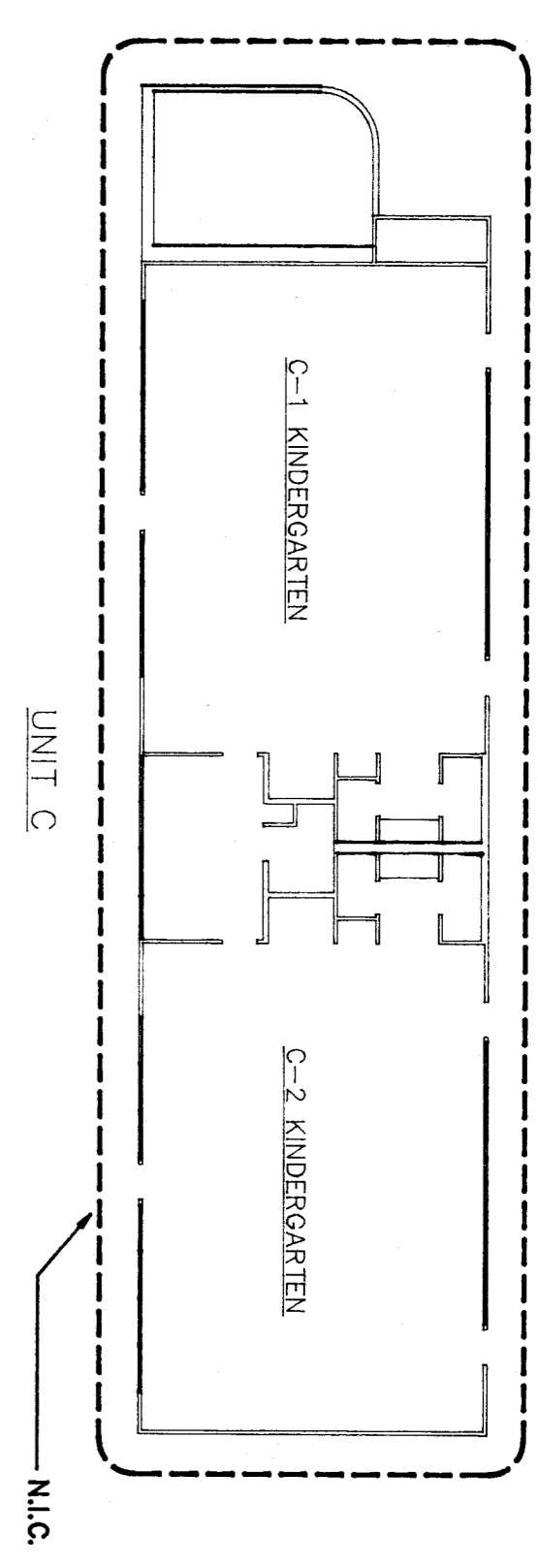
Note: --- AC/3 SMOKE SENSORS SHALL BE WIRED TO ACTIVATE (E) FIRE ALARMS SYSTEM

FEEDER SCHEDULE (THIS SHEET ONLY):

- 1 3/4" CONDUIT, THREE #10 AWG COPPER.
- 2 1" CONDUIT, SIX #10 AWG COPPER.
- 3 1" CONDUIT, NINE #10 AWG COPPER.

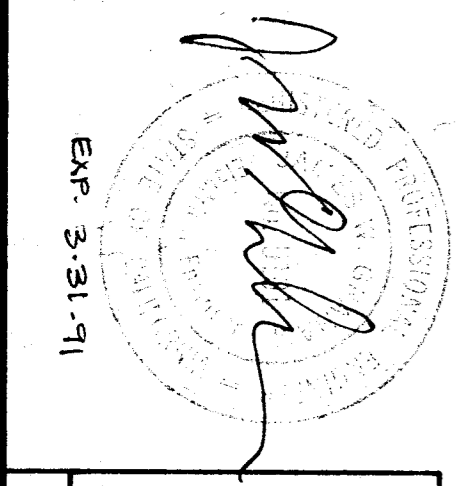
REFERENCE NOTES (THIS SHEET ONLY):

- 1 RUN FEEDERS BACK TO NEW PANEL. PROVIDE ROOF JACKS AND FLASHING WHERE CONDUIT PENETRATES EXISTING ROOF MEMBRANE. REPLACE ROOFING AS REQUIRED.
- 2 INTERCEPT EXISTING EVAPORATIVE COOLER CIRCUIT AND EXTEND TO NEW MECHANICAL UNIT(S) AS SHOWN. USE CIRCUIT FOR CONTROLS AS SHOWN ON MECHANICAL WIRING DIAGRAM ON SHEET M-3.
- 3 RUN ALL CONDUITS EXPOSED ON ROOF OVER REDWOOD SLEEPERS AT 8'-0" O.C. MINIMUM - SEE DETAIL 3/E-2.
- 4 DISCONNECT EXISTING EVAPORATIVE COOLERS. CAP ALL WIRING AND ABANDON WHERE NOT BEEN REUSED. LABEL BREAKERS BACK AT PANEL "SPARES".
- 5 EXISTING MAIN SWITCHBOARD "MSB" - SEE SINGLE LINE DIAGRAM.
- 6 EXISTING BUS DUCT - SEE SINGLE LINE DIAGRAM.
- 7 EXISTING UTILITY COMPANY TRANSFORMER SHALL BE REMOVED. COORDINATE WITH UTILITY COMPANY.
- 8 NEW CONTROL TIME CLOCK - EXTEND 120V TO NEAREST INSULATED POWER SOURCE. USE OF WIRE AND CONDUIT EXPOSED ON WALLS AND CEILING IS ALLOWED IN AREAS WHERE CONCEALED WIRING IS NOT POSSIBLE. VERIFY IN FIELD.
- 9 NEW MECHANICAL UNIT - RUN CIRCUIT TO EXISTING 120V PANEL AND CONNECT TO EXISTING SPACE VACATED BY AC UNITS BEING REPLACED. FOR HG-6 PRO-WIDE 20/2 BREAKER. FOR EF-1 VERIFY EXISTING 120/1 IF NOT PROVIDE NEW BREAKER.



ELECTRICAL CLASSROOM PLAN

SCALE: 1/8" = 1'-0"



TITLE 21 & Imp 102
 IDENTIFICATION SYMBOL
 Organization of Electrical Engineers
 Office of the State Engineer
 9 297
 Structural Steel Section
 O.S.A. 007/24

SHEET NO. 98
 SHEET 2 OF 4

ELECTRICAL CLASSROOM PLAN - ELECTRICAL OFFICE PLAN
 (AIR CONDITIONING)
 RUTH HARDING SCHOOL
 BAKERSFIELD CITY SCHOOL DISTRICT
 3201 PICO STREET, BAKERSFIELD, KERN COUNTY, CALIFORNIA

BAKERSFIELD CITY SCHOOL DISTRICT
 DATE 1-15-90
 BY RESOLUTION OF THE BOARD OF TRUSTEES APPROVED:
 DATE

Glenn Hartzell A.I.A.
 INTERSTATE ENGINEERING, INC.
 Electrical Engineer 5101
 127 East Belmont Ave.
 Fresno, CA 93701
 (209) 486-1151

Glenn Hartzell A.I.A.
 26 'H' STREET, 93304
 P.O. BOX 2344, 93303, BAKERSFIELD, CALIFORNIA
 ARCHITECT C-10298
 DATE