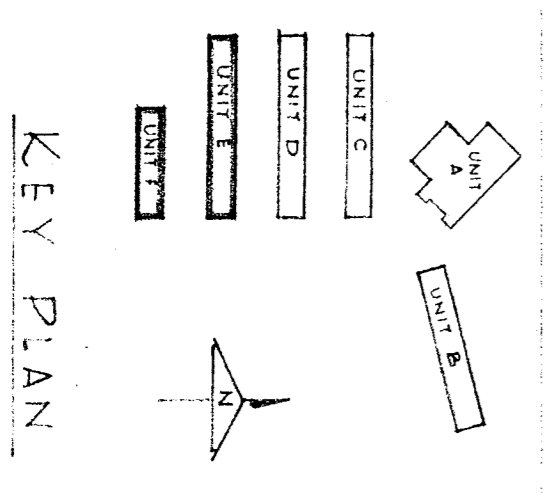
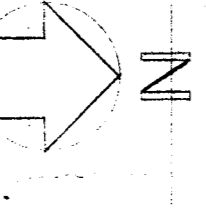
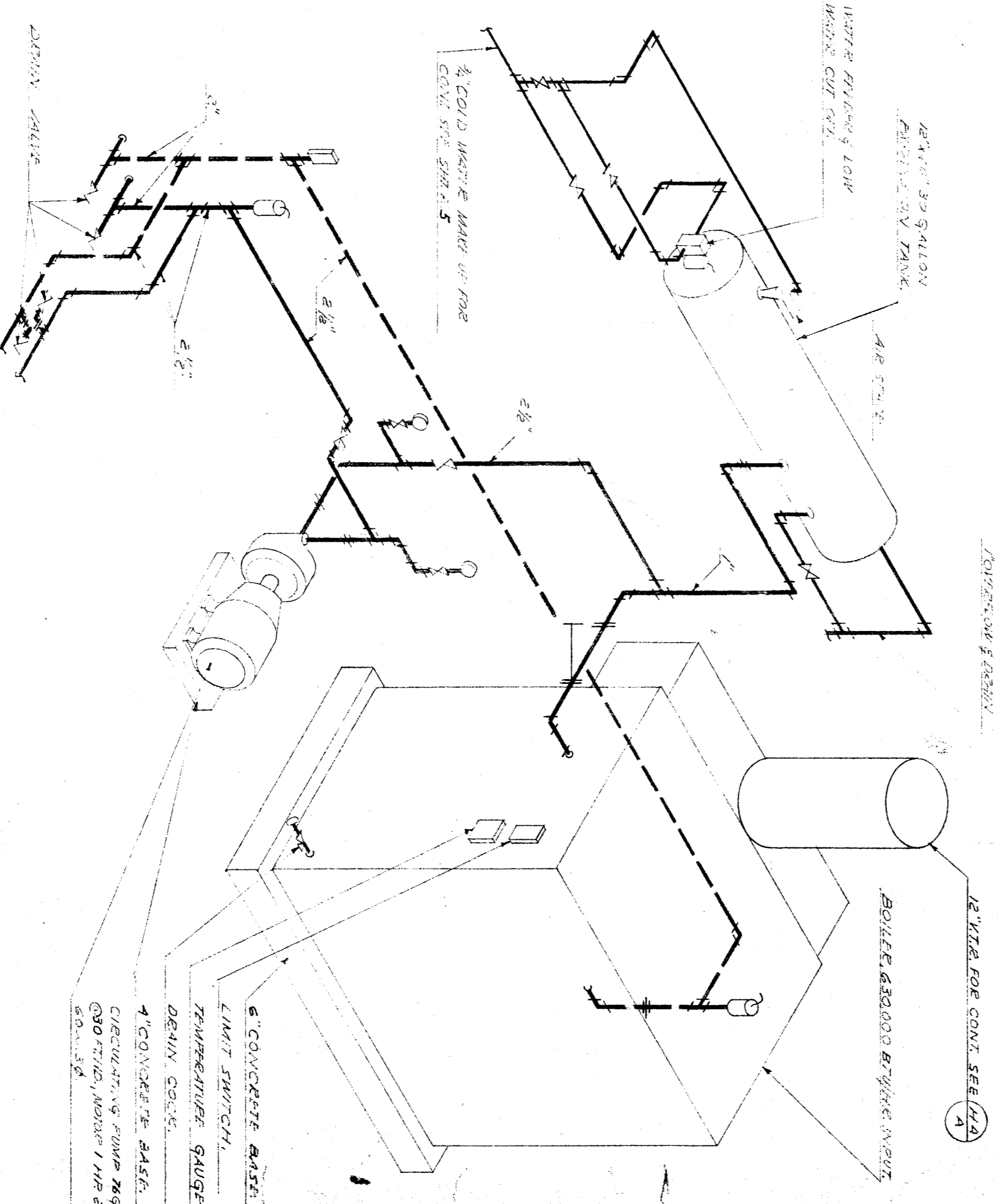
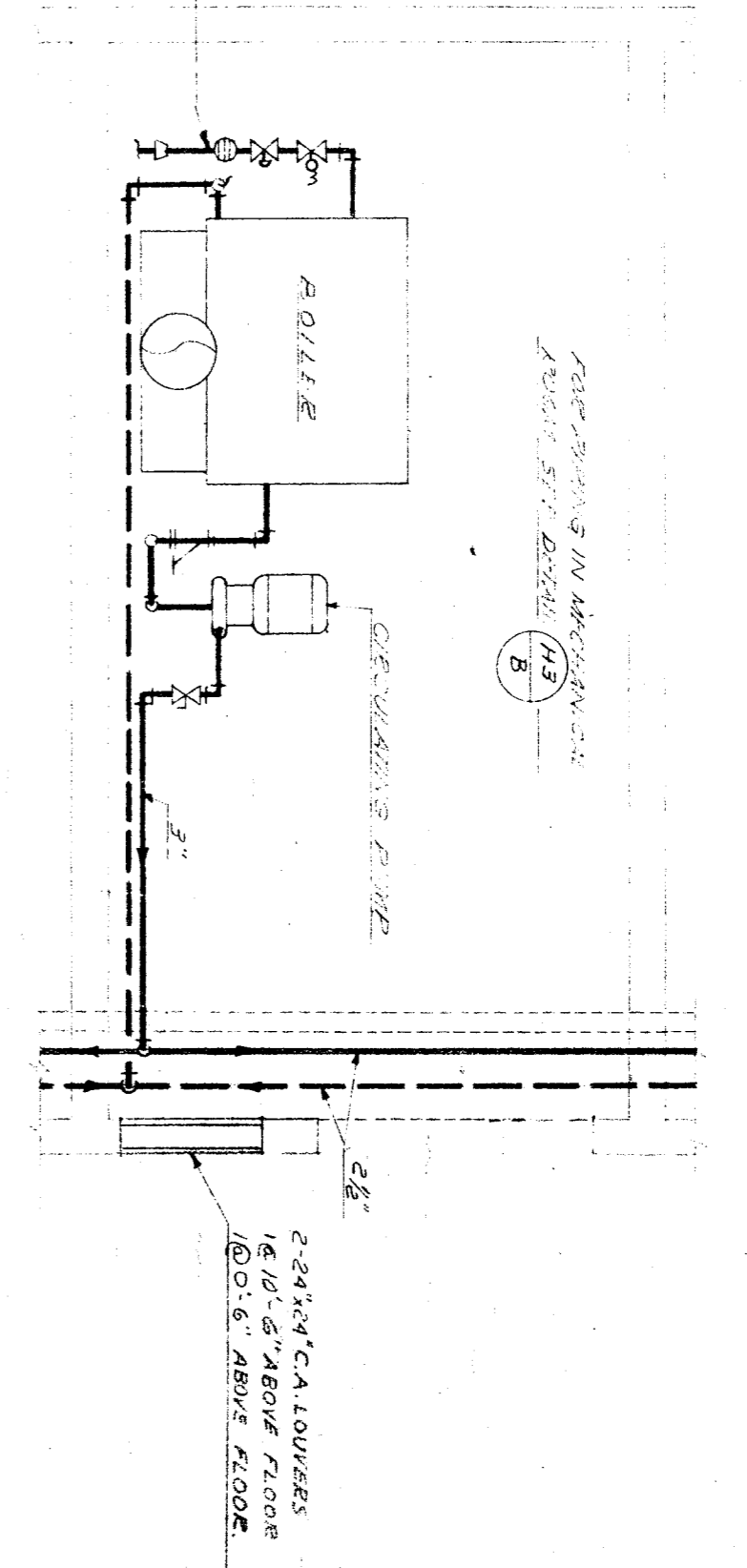


HEATING FLOOR PLAN - UNIT E
SCALE 1/8" = 1'-0"



FLOOR PLAN - MECHANICAL ROOM - DETAIL
SCALE 1/4" = 1'-0"



ISOMETRIC MECHANICAL ROOM DETAIL
SCALE 1/4" = 1'-0"

- NOTES:
1. FOR TYPICAL UNIT VENTILATOR PIPING SEE DETAIL (A)
 2. FOR TYPICAL UNIT VENTILATOR SECTION SEE DETAIL (B)
 3. FOR TYPICAL TRENCH PIPE HANGING SEE DETAIL (C)
 4. TRENCHES IN THIN FLOOR EACH FINISHED TO CLASSROOMS HAVE CONCRETE COVER. ALL OTHER TRENCHES SHALL BE COVERED WITH STEEL CHECKER PLATE. SEND UP TRENCHES HAVE GRAVEL BOTTOM. SEE SPECIALS DRAWINGS.

CHESTER D. WALZ
CONSULTING MECHANICAL ENGINEER
500 SO. FLORENZA ST. LOS ANGELES
CALIF. REG. NO. 70

STATE DIVISION OF ARCHITECTURE
11352 APPROVED DEC 2, 1953
DRAWN BY: [Signature]
CHECKED BY: [Signature]

ARCHITECTS:
WRIGHT MITCHELL & PARTNERS
1201 N. GARDEN ST. PASADENA, CALIF.

KEEN COUNTY SUPERVISOR OF SCHOOLS
BAKERSFIELD CITY SCHOOL DISTRICT
BOARD OF EDUCATION

DATE: [Blank]

DATE: [Blank]

JOHN C. FREMONT SCHOOL
FOR THE
BAKERSFIELD CITY SCHOOL DISTRICT
TEKSA STREET BAKERSFIELD, KEEN COUNTY CALIFORNIA

SHEET NO. 289