

CONSULTANTS

EUGENE WU
 CONSULTING ELECTRICAL ENGINEER
 307 N. ALABAMA AV., PASADENA, CALIF.
 TELEPHONE (818) 244-4411

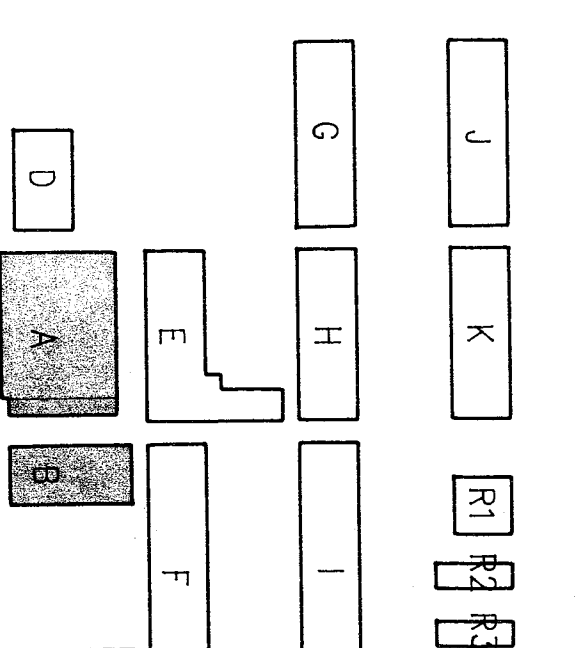
PROJECT

BAKERSFIELD CITY SCHOOL DISTRICT

FRANKLIN ELEMENTARY SCHOOL MODERNIZATION

THE ABOVE DRAWINGS AND SPECIFICATIONS AND DATA, REVISIONS AND NOTES HAVE BEEN PREPARED BY THE ARCHITECT AND ENGINEER FOR THE PROJECT AND ARE HEREBY SUBMITTED TO THE BOARD OF SUPERVISORS FOR APPROVAL. THE BOARD OF SUPERVISORS IS ADVISED THAT THE ARCHITECT AND ENGINEER ARE NOT PROVIDING ANY WARRANTY OR GUARANTEE FOR THE ACCURACY OR COMPLETENESS OF THESE DRAWINGS AND SPECIFICATIONS AND THAT THE BOARD OF SUPERVISORS SHOULD CONSULT WITH THE ARCHITECT AND ENGINEER FOR ANY QUESTIONS OR CONCERNS. THE BOARD OF SUPERVISORS IS ADVISED THAT THE ARCHITECT AND ENGINEER ARE NOT PROVIDING ANY WARRANTY OR GUARANTEE FOR THE ACCURACY OR COMPLETENESS OF THESE DRAWINGS AND SPECIFICATIONS AND THAT THE BOARD OF SUPERVISORS SHOULD CONSULT WITH THE ARCHITECT AND ENGINEER FOR ANY QUESTIONS OR CONCERNS.

KEY PLAN



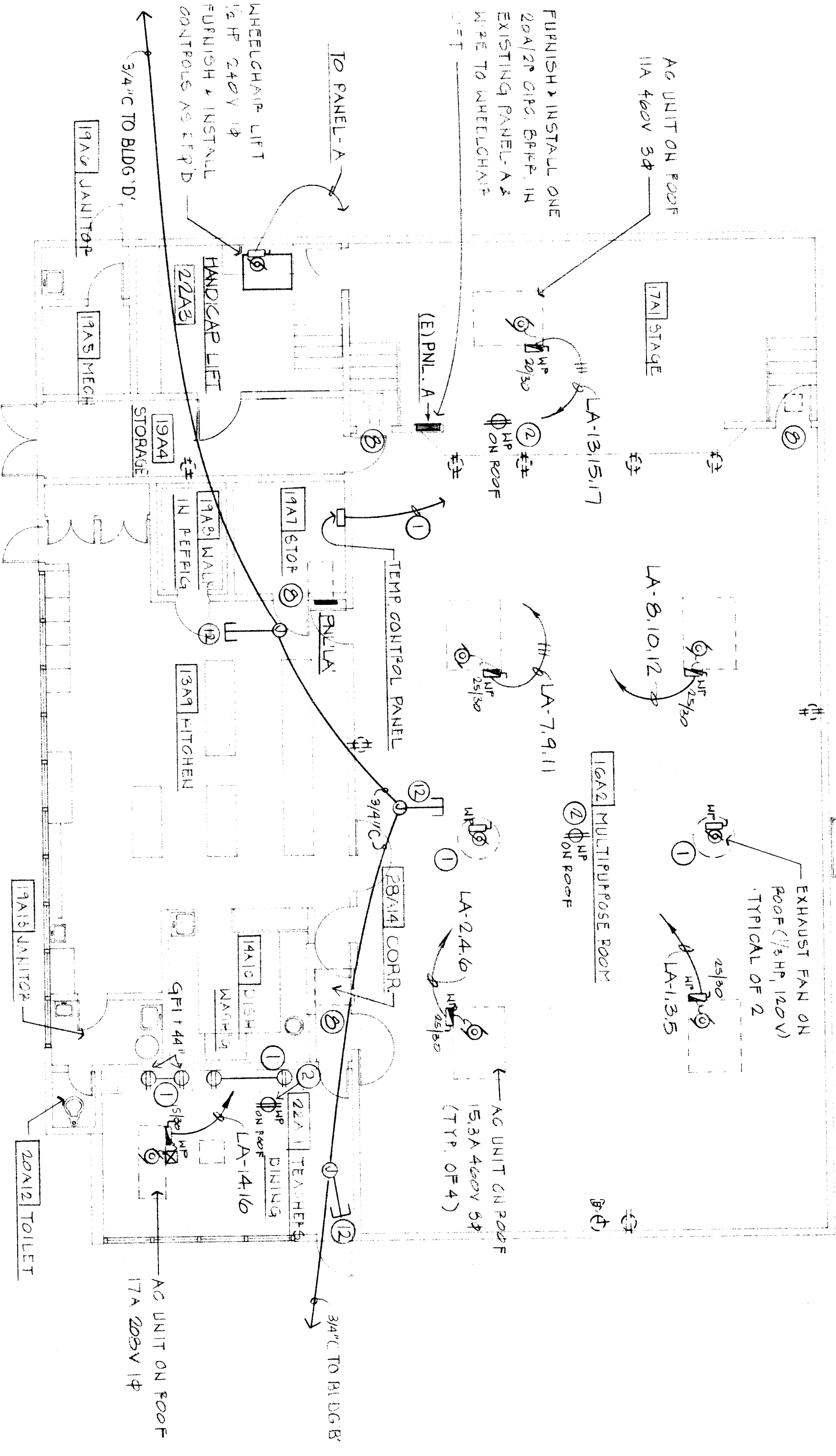
BAKERSFIELD CITY SCHOOL DISTRICT BOARD OF EDUCATION

DATE	APPROVED
DATE	ISSUED FOR
DATE	REVISIONS

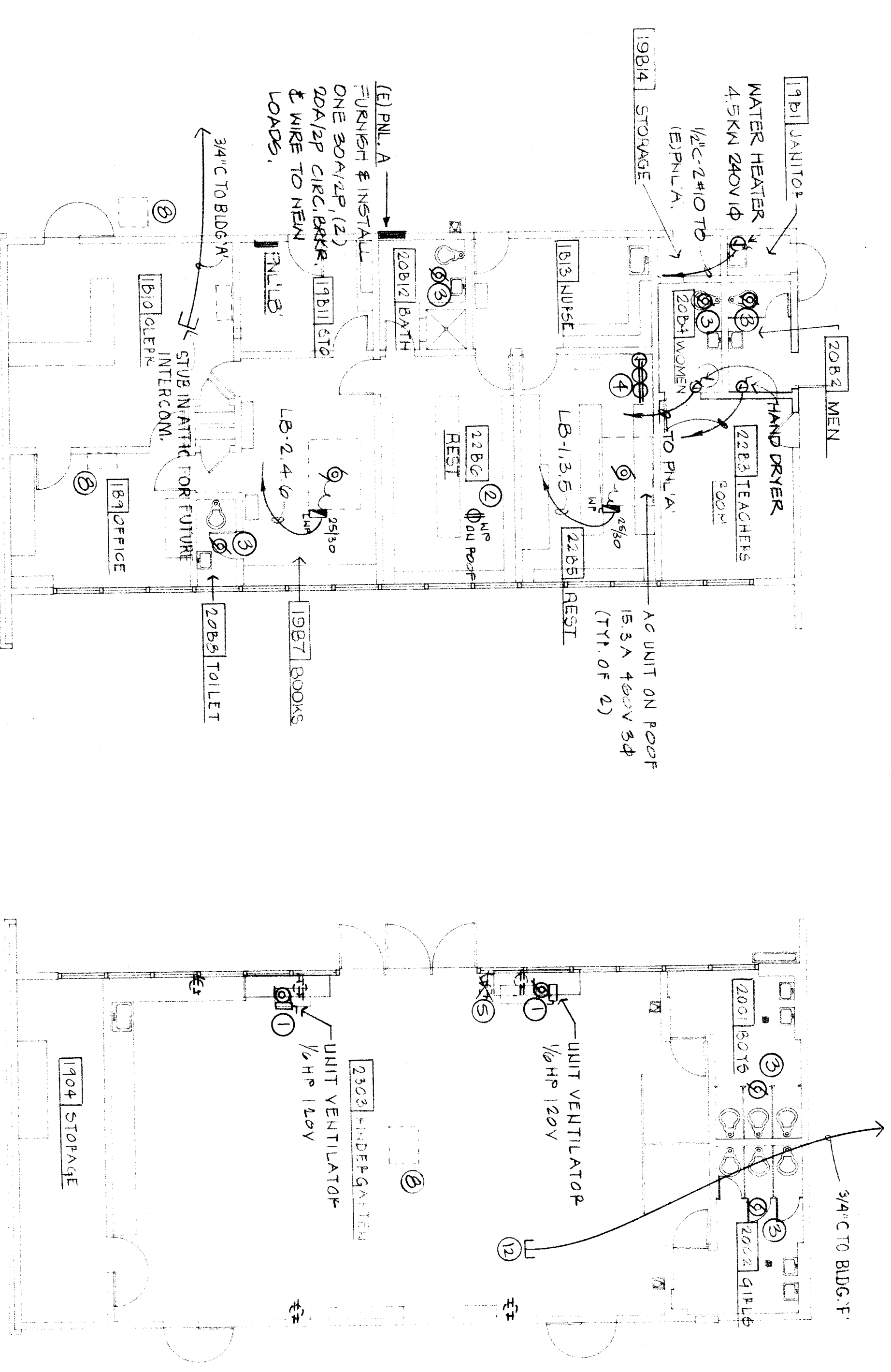
ELECTRICAL POWER AND SIGNAL BUILDINGS ABC

APPROVED ARCHITECT: *Donald W. Renfro*
 CHECKED E.N.
 DRAWN BY M.L.
 PROJECT NO. B-01052
 SHEET NUMBER **E-6**
 85216WZ1A36
 OF 6 SHEETS

- LEGEND**
- WIRE TO ONE SPARE 20A/1P CIRCUIT IN EXISTING PANEL.
 - WIRE TO THE NEAREST RECEPTACLE CIRCUIT.
 - EXHAUST FAN SWITCHED WITH LIGHT IN ROOM.
 - PROVIDE TWO RECEPTACLES, AND A 3-BOX FOR 'EMG' AND WIRE TO ONE SPARE 20A/1P CIRCUIT IN EXISTING PANEL.
 - REMOVE EXISTING SWITCHES, EXPOSED RACEWAY, PATCH AND PAINT WALLS TO MATCH SURROUNDING.
 - REMOVE EXISTING RECEPTACLE, RELOCATE RECEPTACLE INSIDE CABINET AND WIRE TO EXISTING CIRCUIT.
 - RELOCATE EXISTING BURGALAR SENSOR AFTER NEW CEILING INSTALLED AND WIRE TO EXISTING SYSTEM.
 - DISCONNECT EXISTING MECHANICAL UNIT AND ABANDON FEEDER, PATCH AND PAINT WALL OR CEILING TO MATCH SURROUNDING.
 - EXISTING RECEPTACLE INSIDE CABINET TO REMAIN.
 - WIRE RECEPTACLE INSIDE CABINET TO PIGTAIL WITH FLEXIBLE CONDUIT.
 - WIRE TO BELAYS FOR CONTROL.
 - 3/4" C STUB IN ATTIC FOR PUNING INTERCOM.



BUILDING A



BUILDING B

BUILDING C

