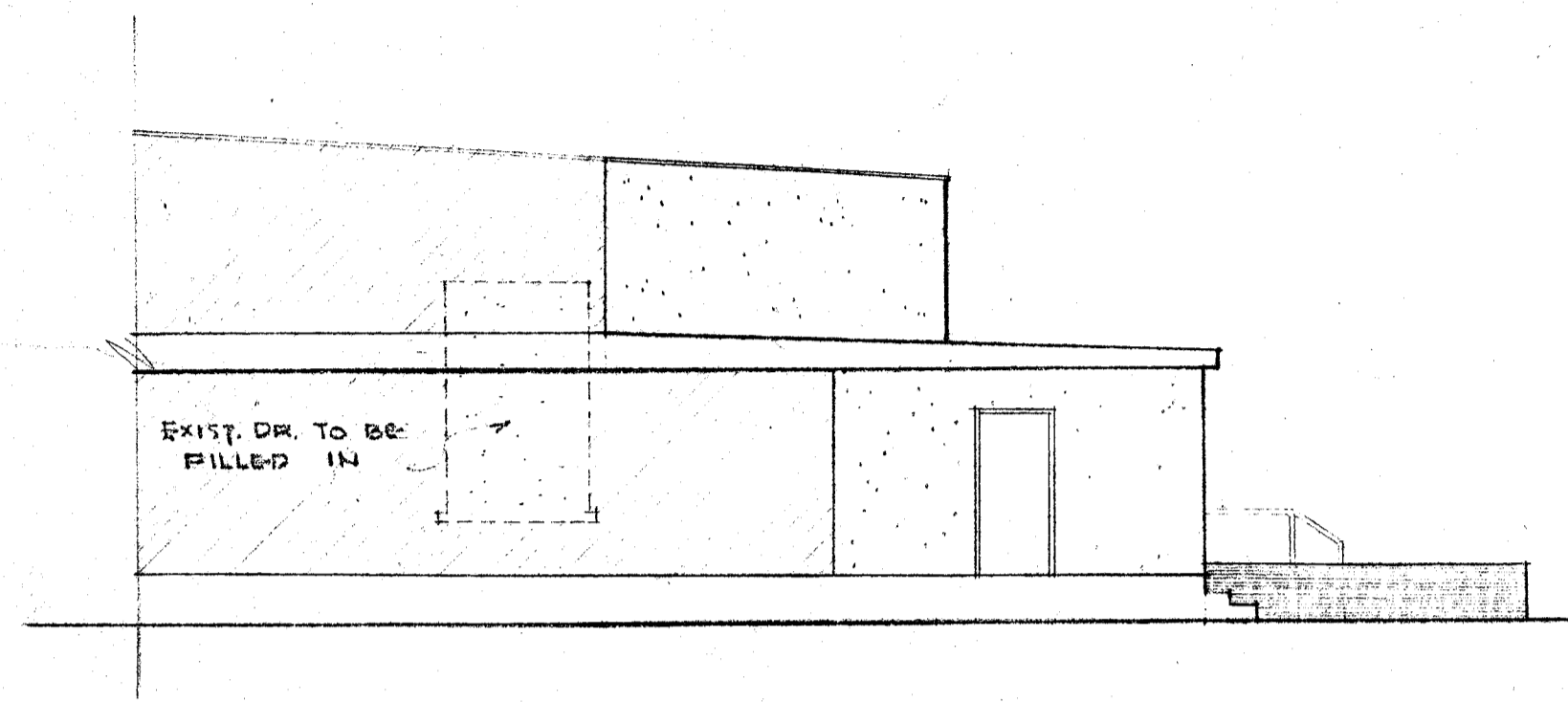
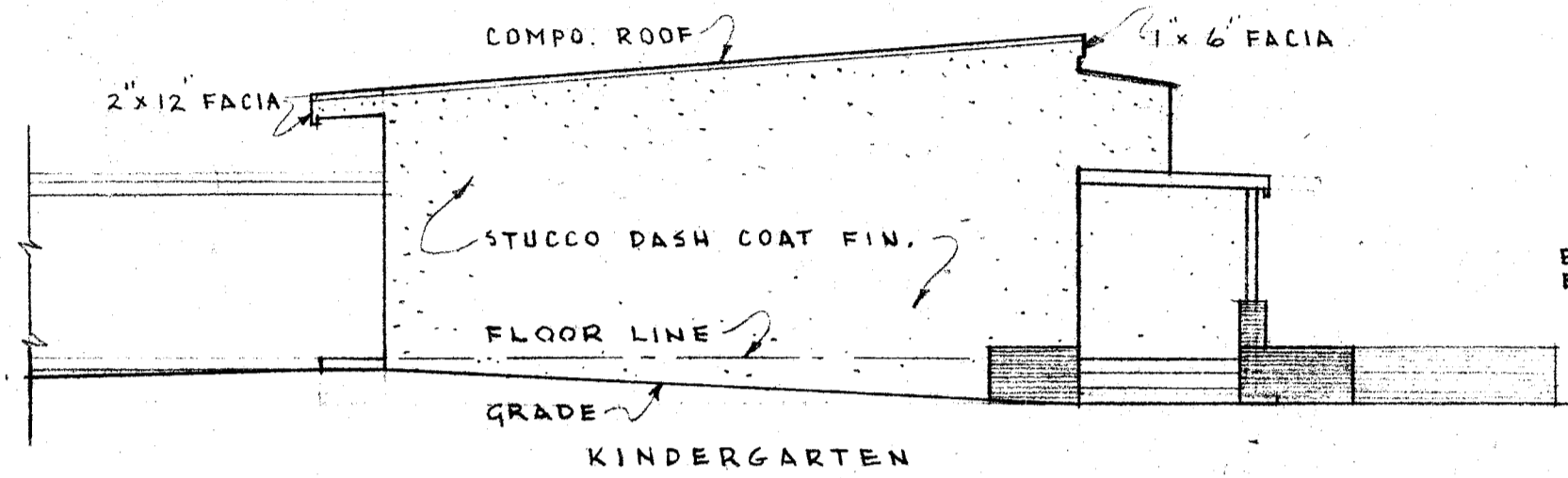


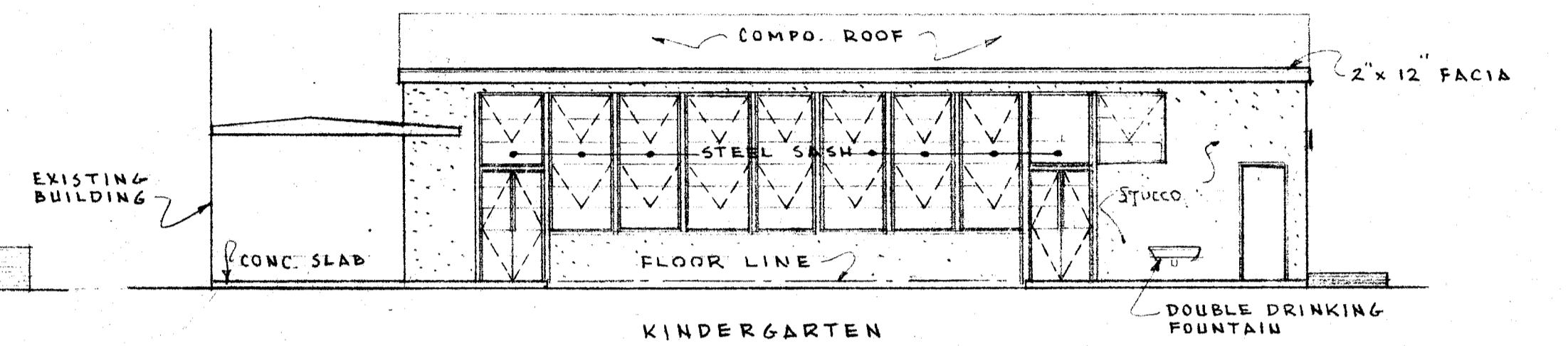
SOUTH ELEVATION
SCALE 1/8" = 1'-0"



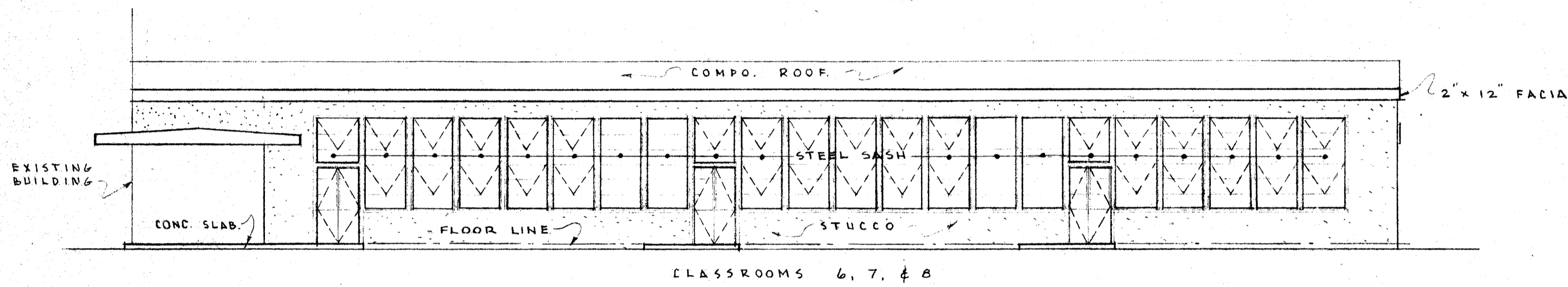
ELEVATION @ A



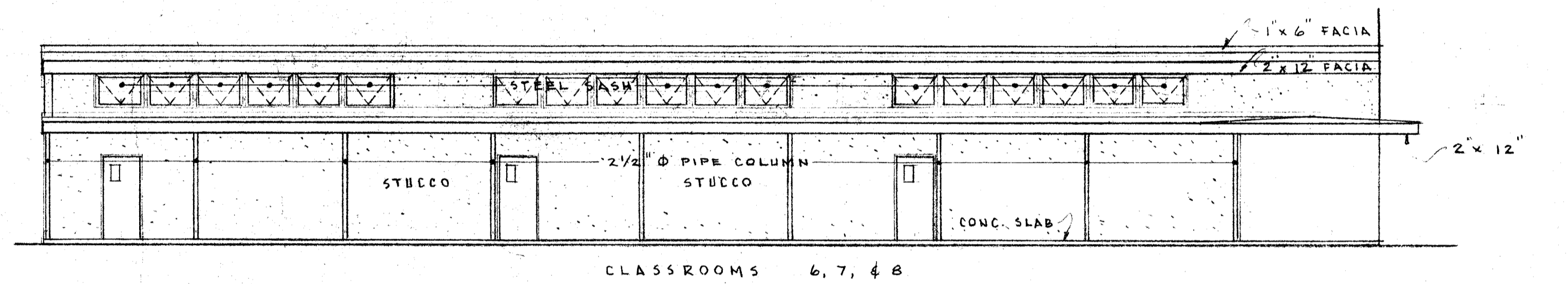
WEST ELEVATION



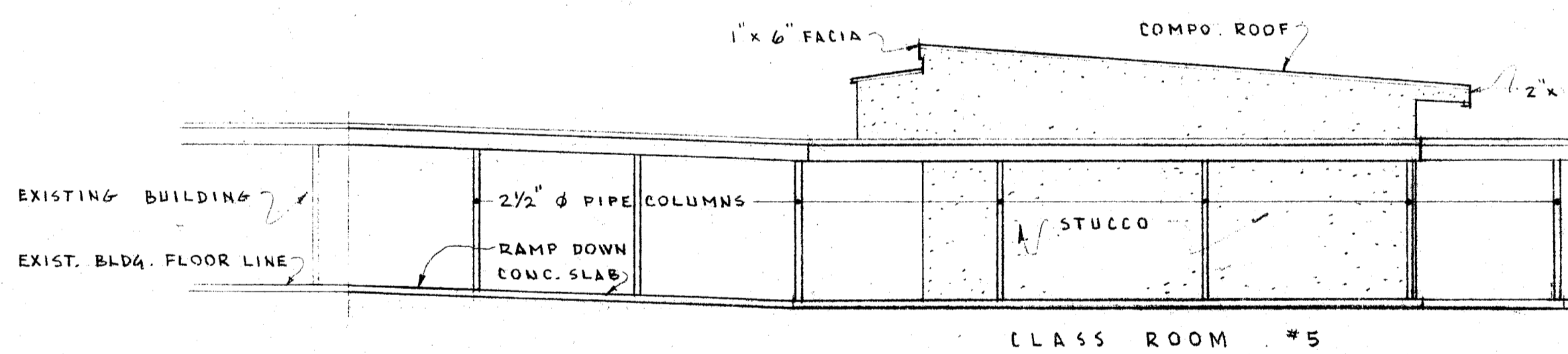
NORTH ELEVATION



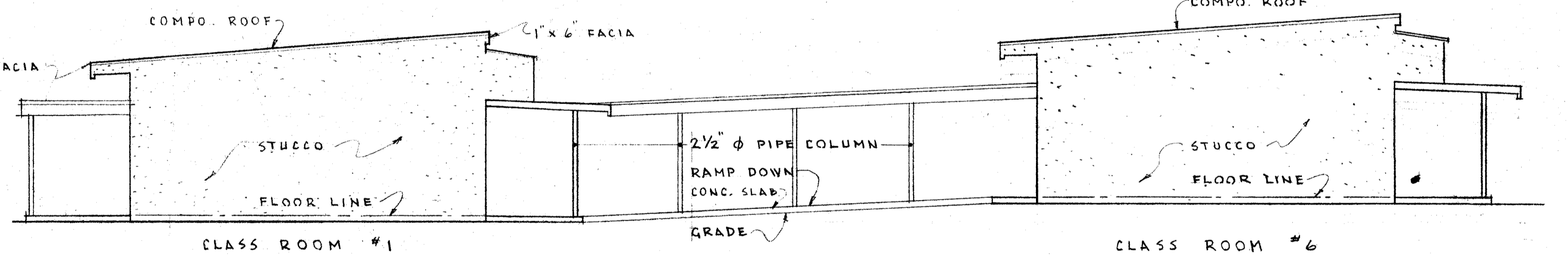
NORTH ELEVATION



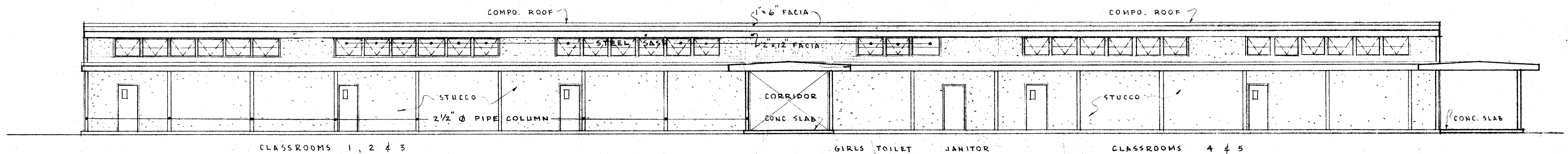
SOUTH ELEVATION



EAST ELEVATION



WEST ELEVATION



SOUTH ELEVATION

SCALE 1/8" = 1'-0"

NOTE: CONTRACTOR IS TO VERIFY ALL DIMENSIONS ON THE WORK. THIS DRAWING IS THE PROPERTY OF THE ARCHITECT AND MUST BE RETURNED ON COMPLETION OF THE CONTRACT.

DIVISION OF SCHOOL HOUSE PLANNING

STATE OF CALIFORNIA - DEPARTMENT OF PUBLIC WORKS
DIVISION OF ARCHITECTURE
APPROVED NOV 8 - 1953
11380 *Henry M. Baker*

COUNTY SUPERINTENDENT OF SCHOOLS

BOARD OF TRUSTEES FINAL APPROVAL
H. J. G. [Signature]
Virginia C. Bellinger

FRANKLIN SCHOOL ADDITION
BAKERSFIELD CITY SCHOOL DISTRICT
BAKERSFIELD CALIFORNIA

C.B. Alford
C. B. ALFORD • ARCHITECT • W. J. THOMAS
602 HABERFELDE BUILDING
BAKERSFIELD CALIFORNIA

SHEET NO.

4