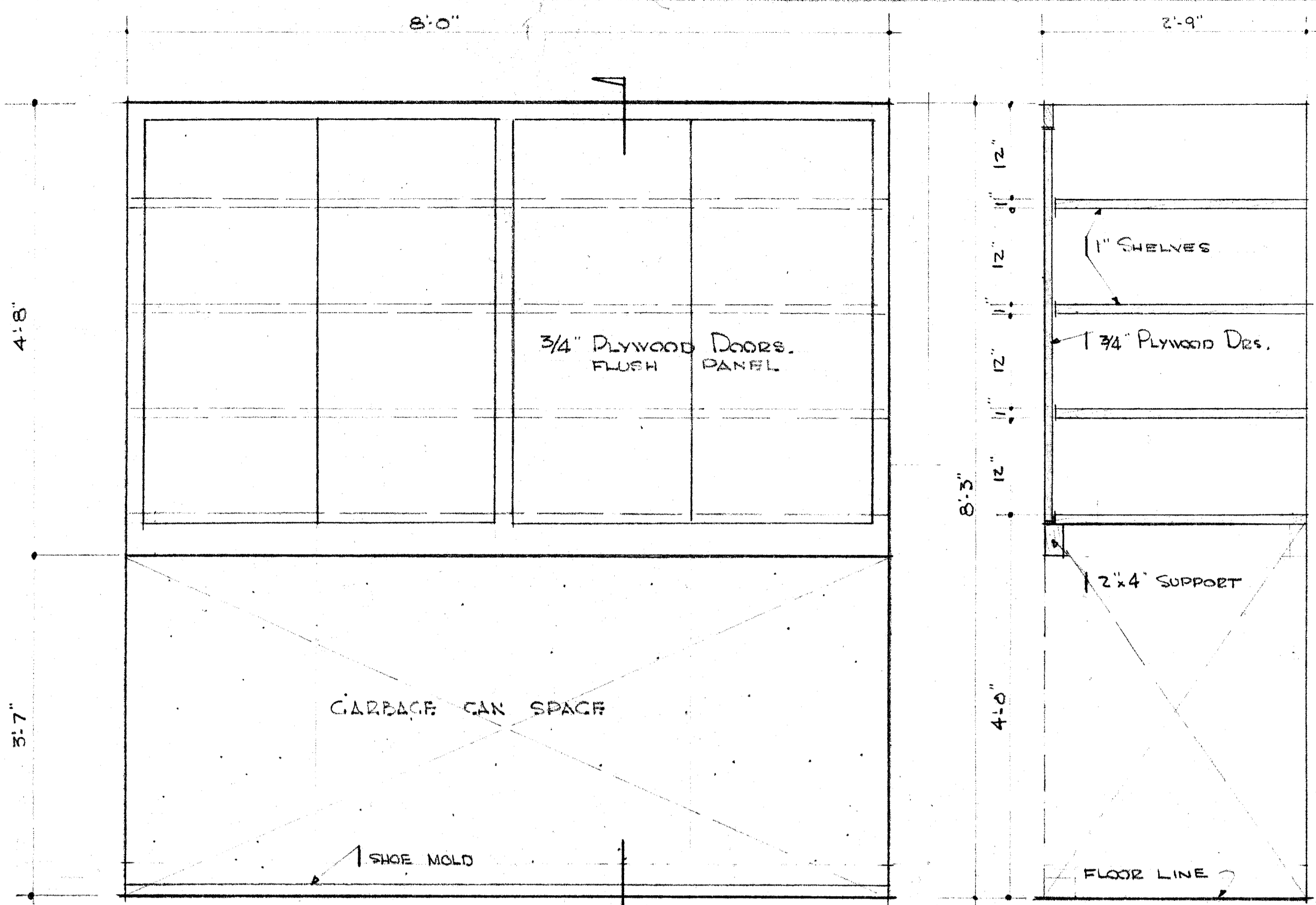
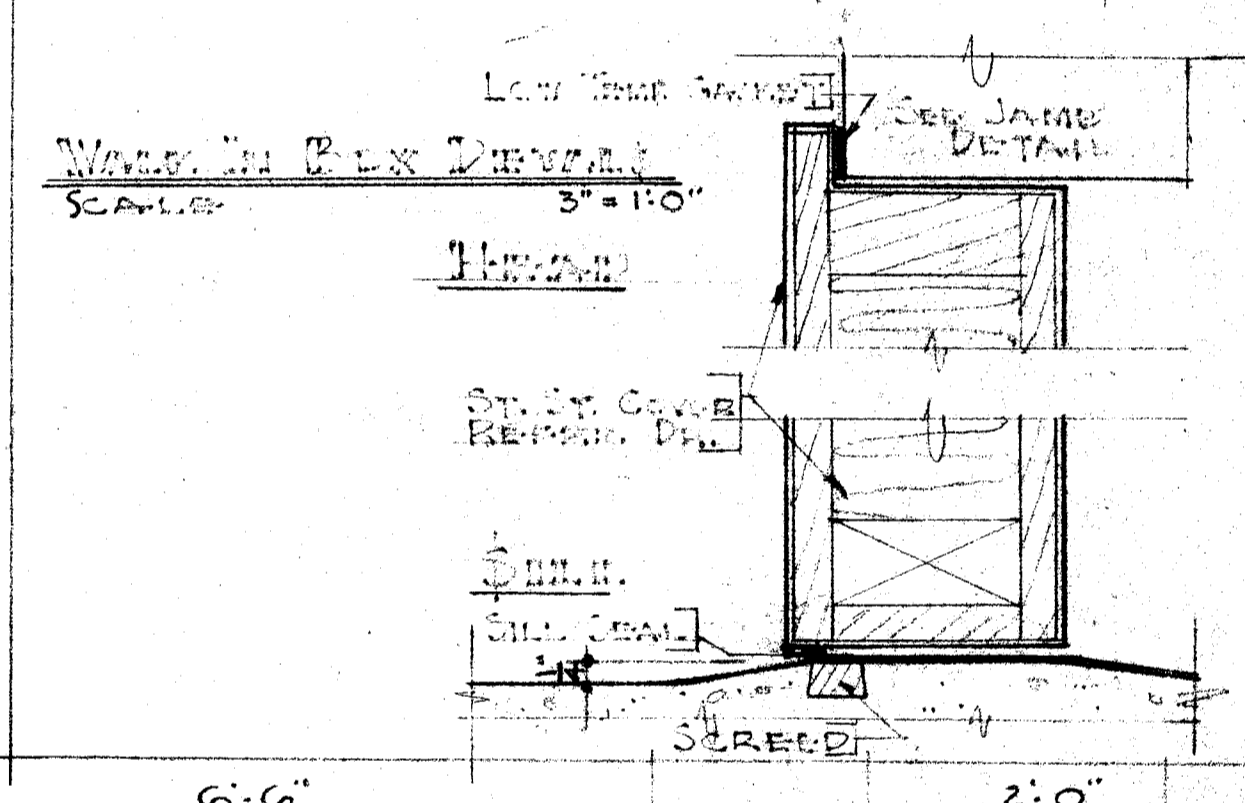
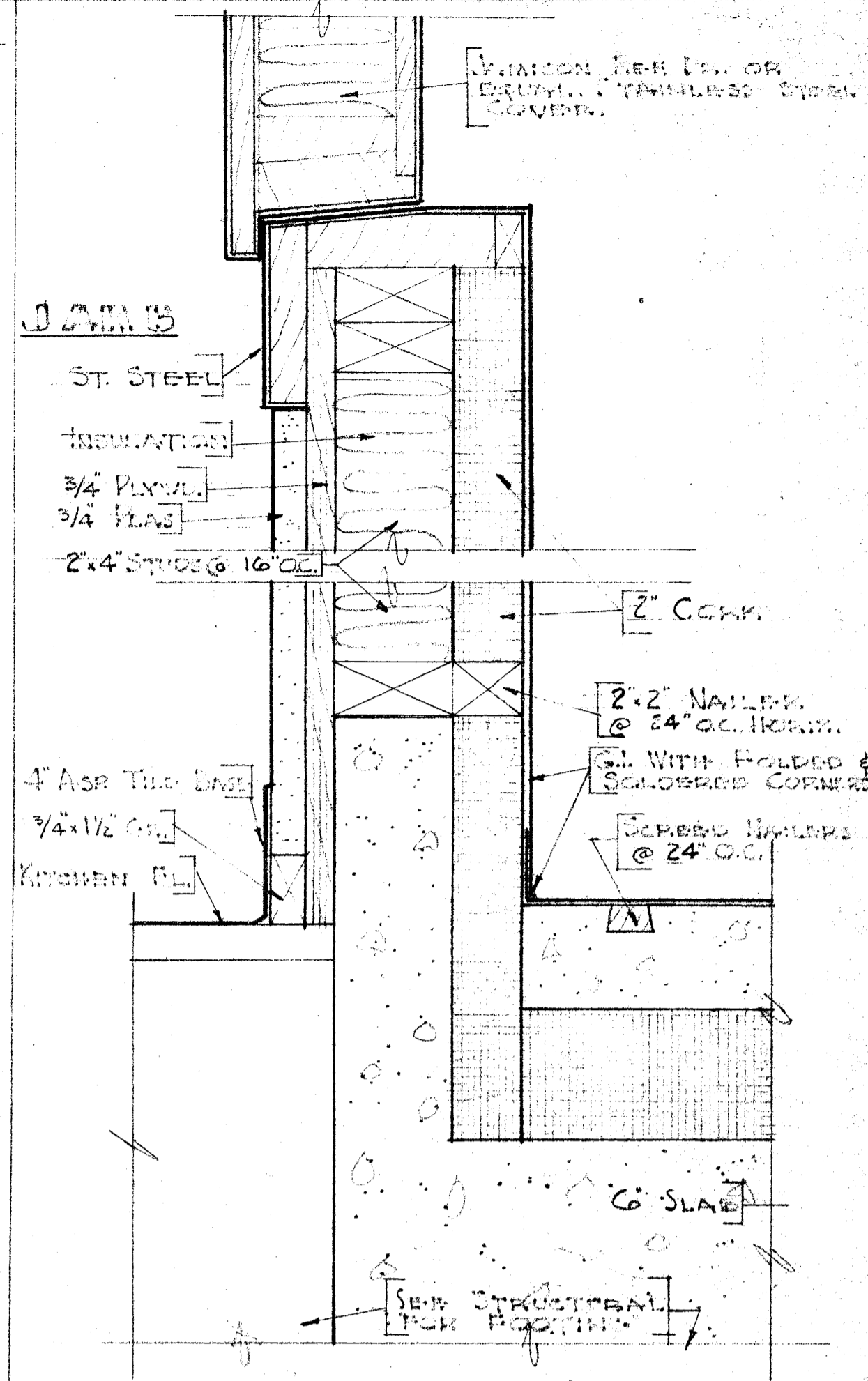


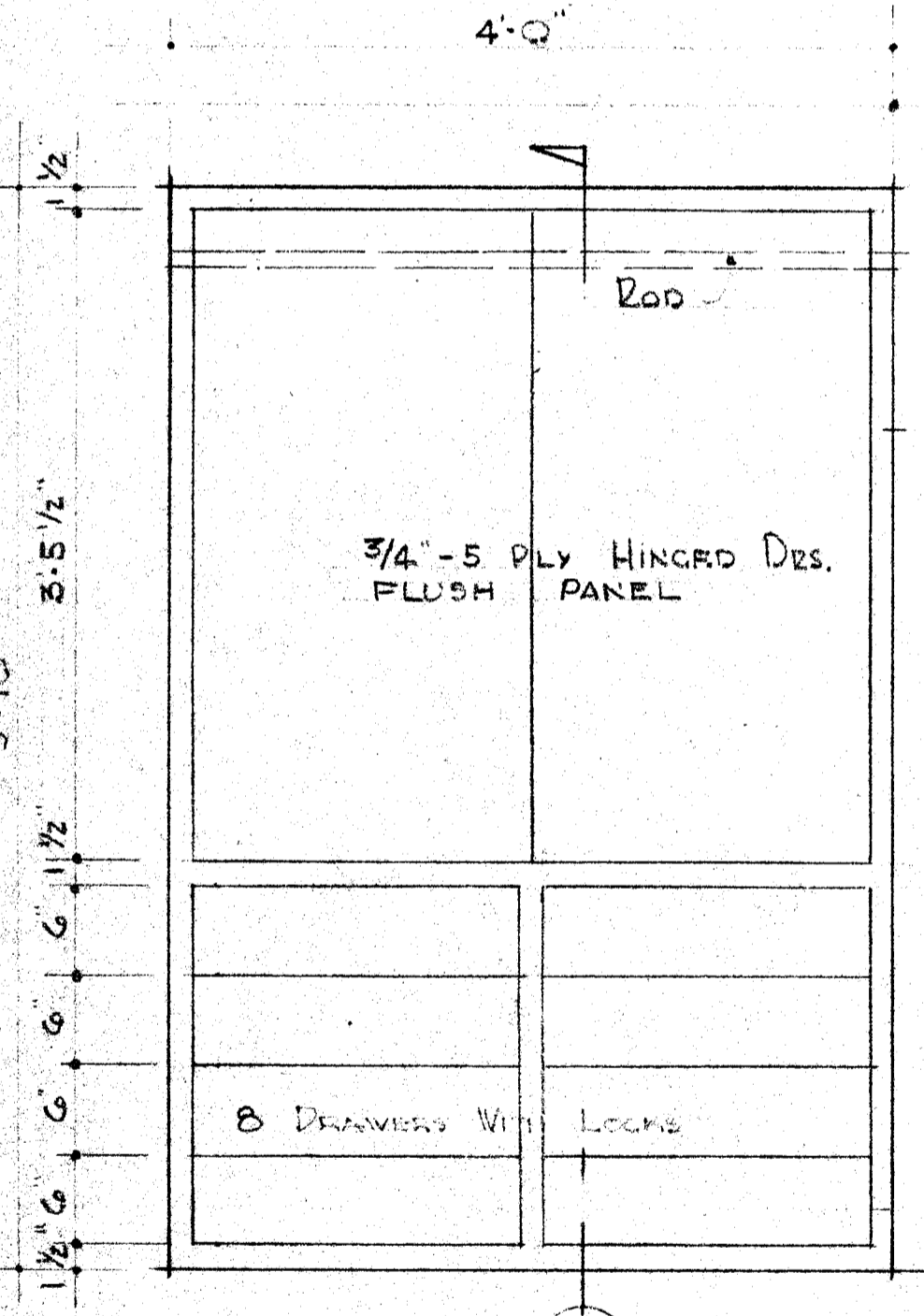
SECTION - A
SCALE: 1" = 1'-0"



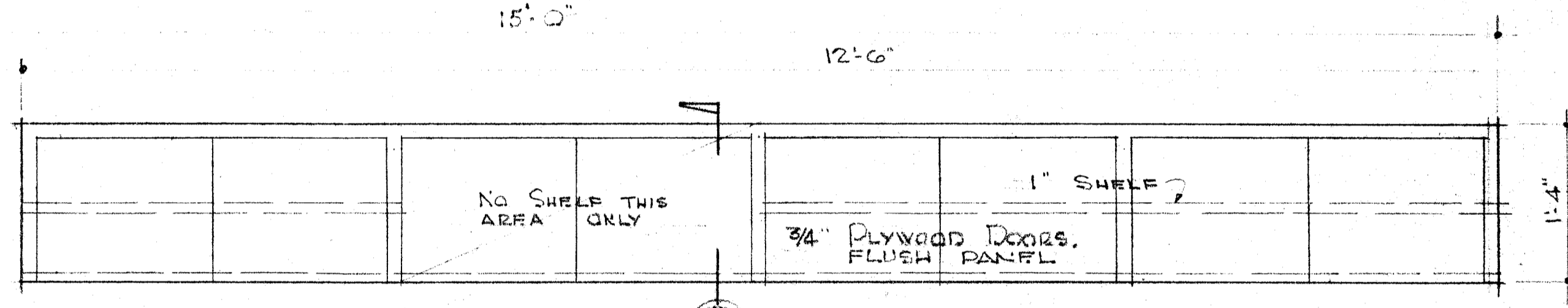
SECTION - B
SCALE: 1" = 1'-0"



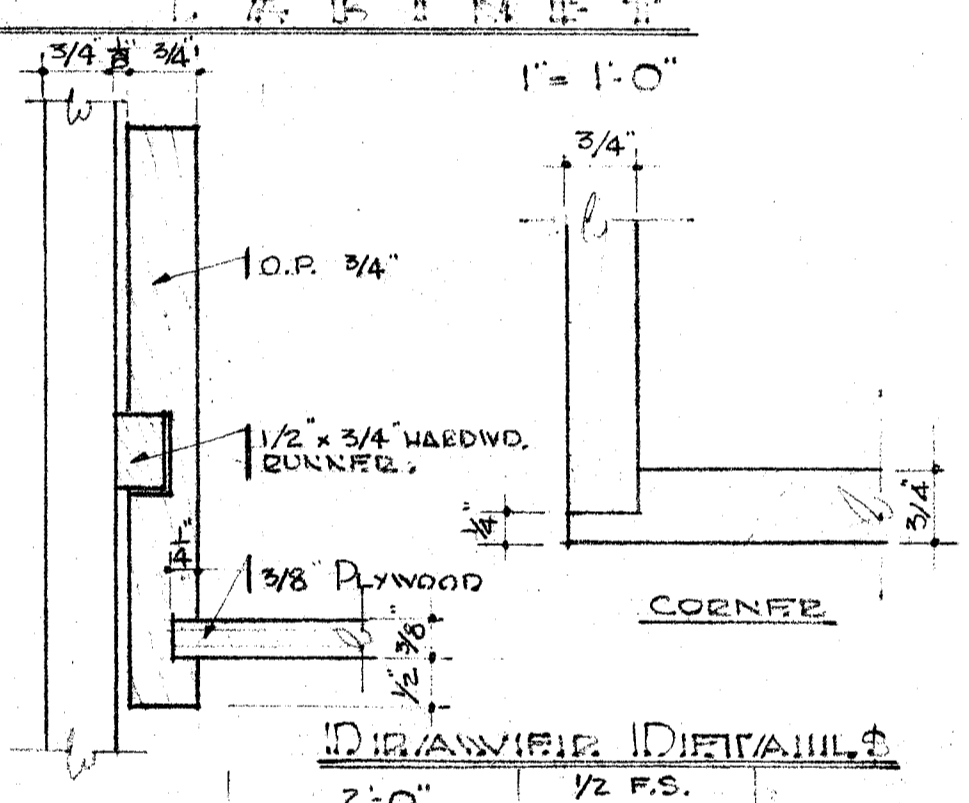
SECTION - C
SCALE: 3/4" = 1'-0"



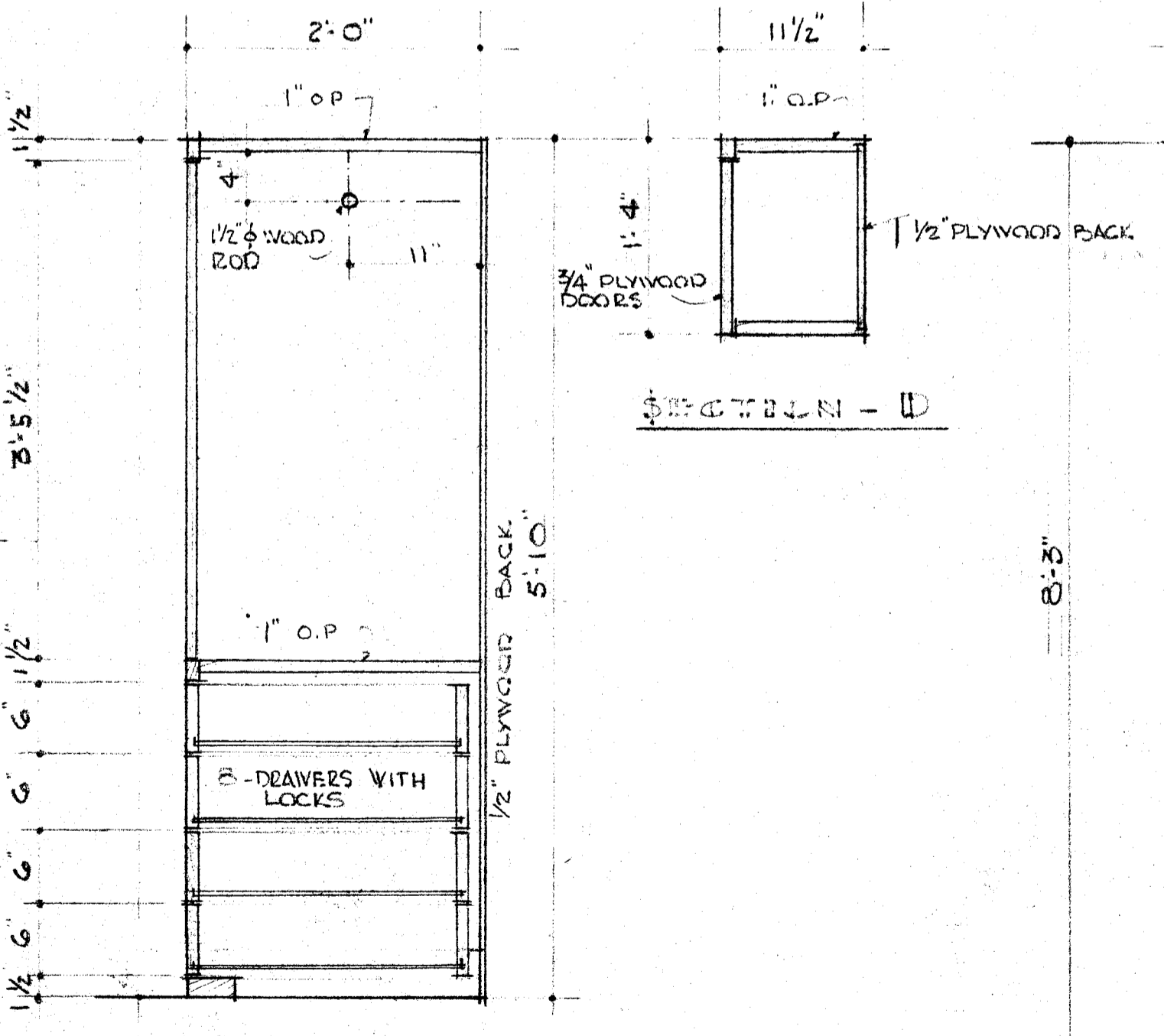
SECTION - D
SCALE: 1" = 1'-0"



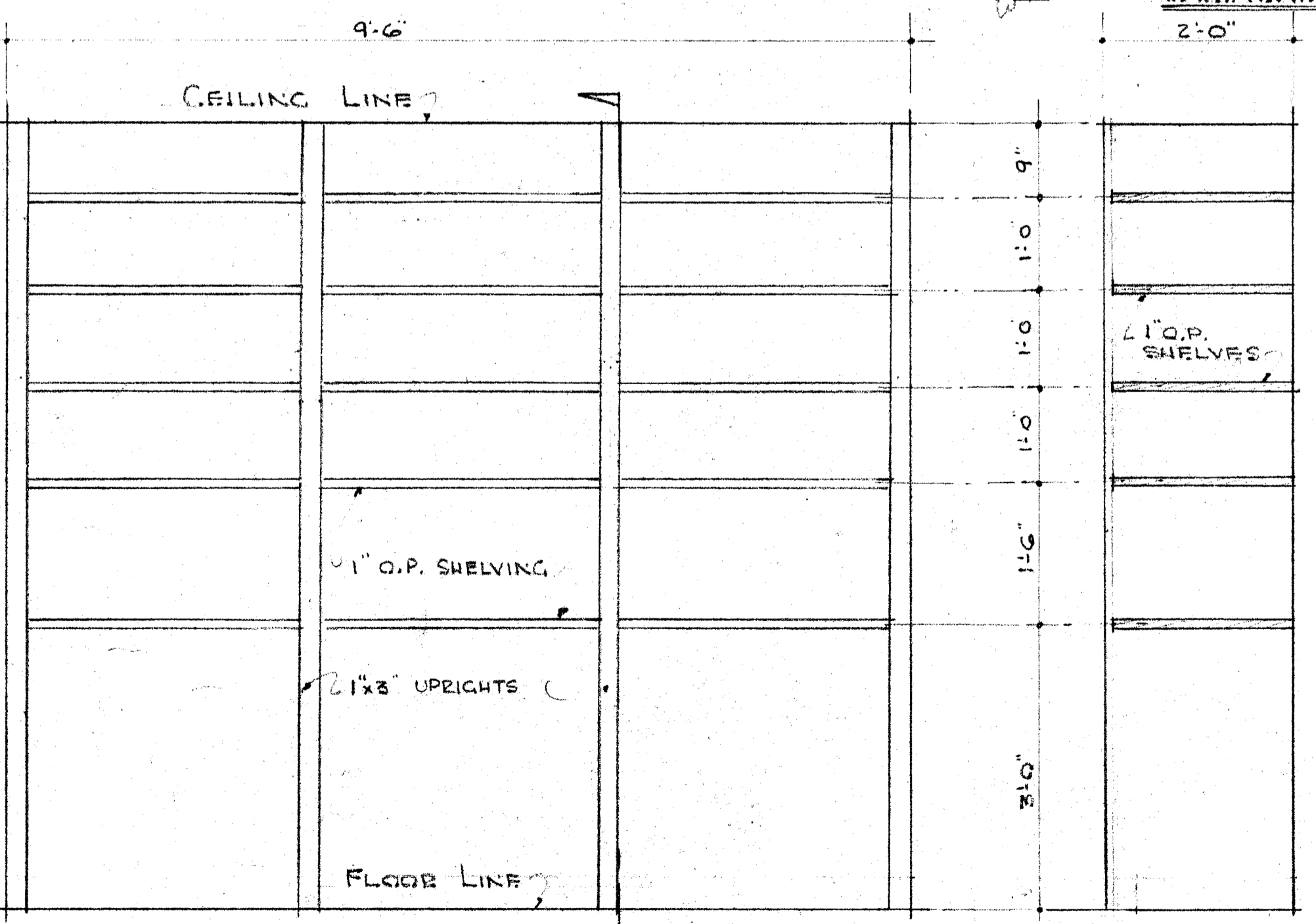
SECTION - E
SCALE: 1" = 1'-0"



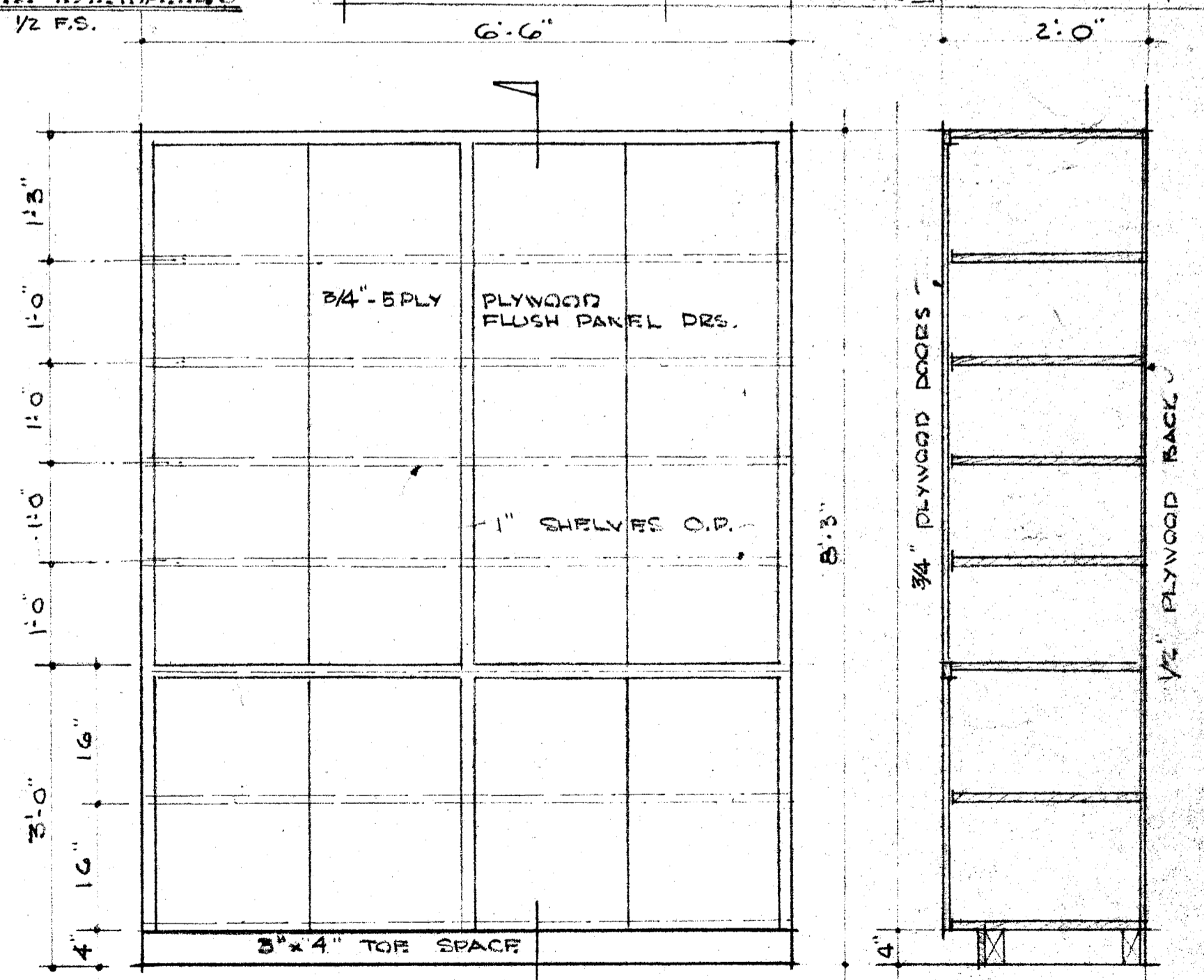
SECTION - F
SCALE: 1/2" = 1'-0"



SECTION - G
SCALE: 1" = 1'-0"



SECTION - H
SCALE: 3/4" = 1'-0"



SECTION - I
SCALE: 3/4" = 1'-0"

SECTION - J
SCALE: 1" = 1'-0"

SECTION - K
SCALE: 3/4" = 1'-0"

SECTION - L
SCALE: 3/4" = 1'-0"

NOTE: CONTRACTOR IS TO VERIFY ALL DIMENSIONS ON THE WORK. THIS DRAWING IS THE PROPERTY OF THE ARCHITECT AND MUST BE RETURNED ON COMPLETION OF THE CONTRACT.

DIVISION OF SCHOOL HOUSE PLANNING

STATE OF CALIFORNIA, DEPARTMENT OF PUBLIC WORKS
DIVISION OF ARCHITECTURE
APPROVED NOV 6 1953
11380 *Harry M. Bell*
REGISTERED PROFESSIONAL ARCHITECT

COUNTY SUPERINTENDENT OF SCHOOLS

BOARD OF TRUSTEES
FINAL APPROVAL
H. J. [Signature]
Reginald O. [Signature]

FRANKLIN SCHOOL ADDITION
BAKERSFIELD CITY SCHOOL DISTRICT
BAKERSFIELD, CALIFORNIA

C.B. Alford
C. B. ALFORD • ARCHITECT • W. J. THOMAS
602 HABERFELDE BUILDING BAKERSFIELD CALIFORNIA
PHONE 2-1302

SHEET NO. **A 18**