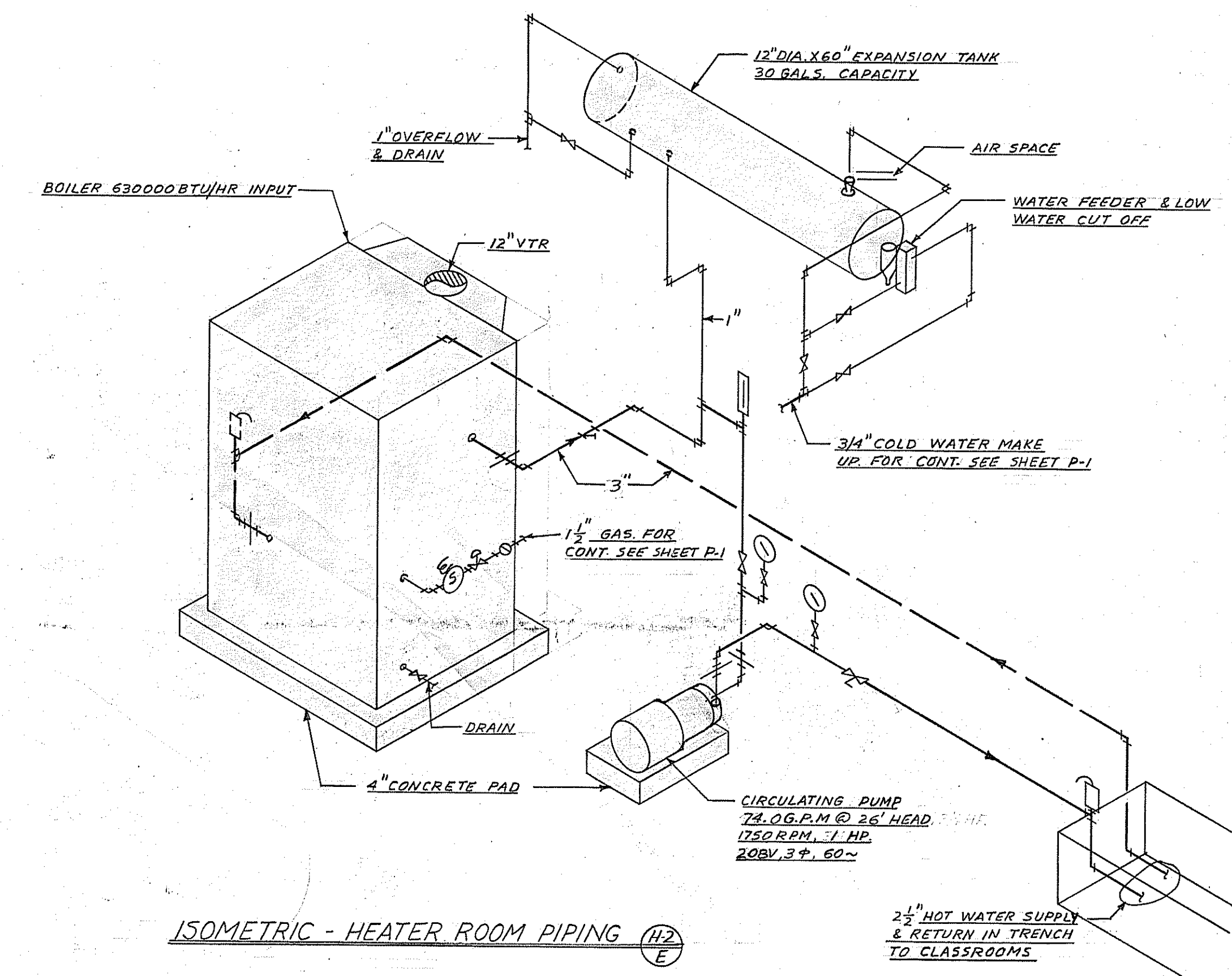
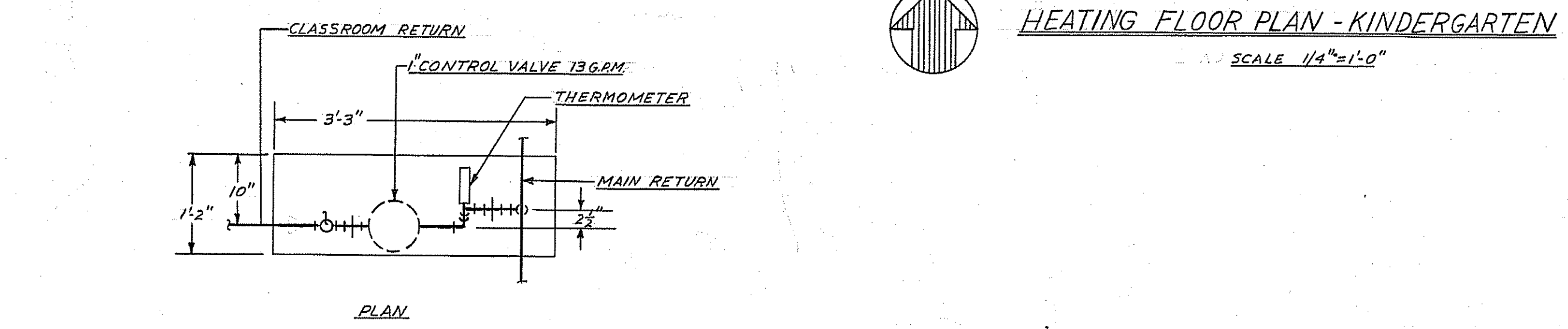


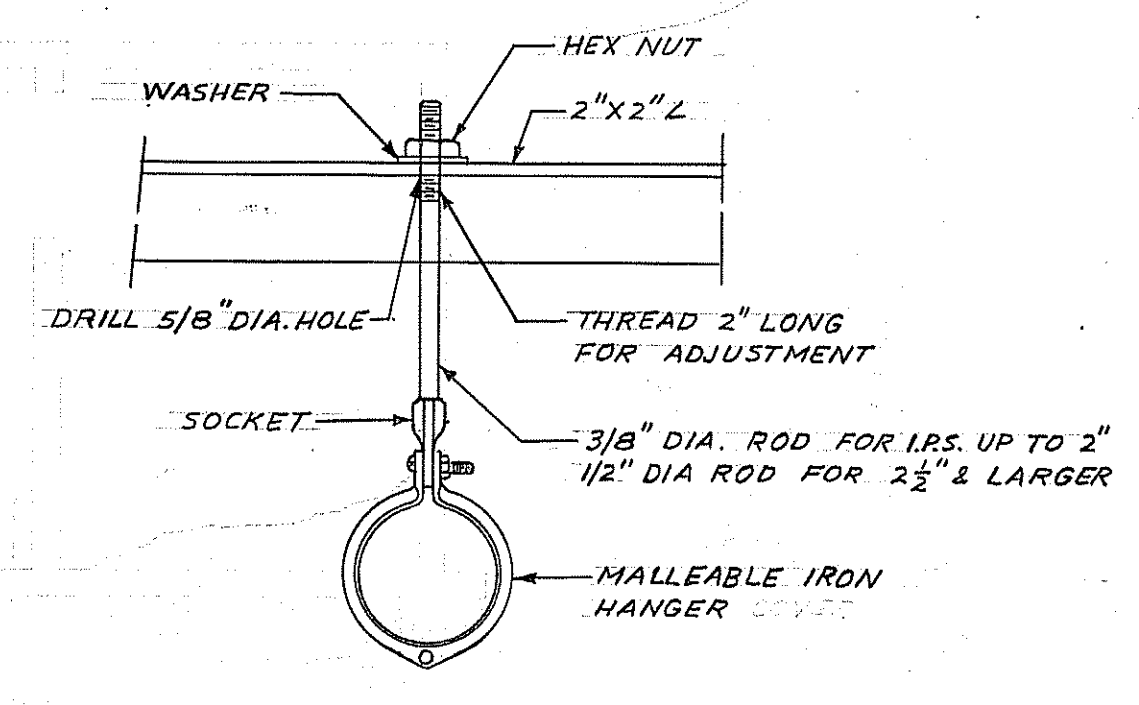
FLOOR PLAN - HEATER ROOM (H-2)  
SCALE - 3/8" = 1'-0"



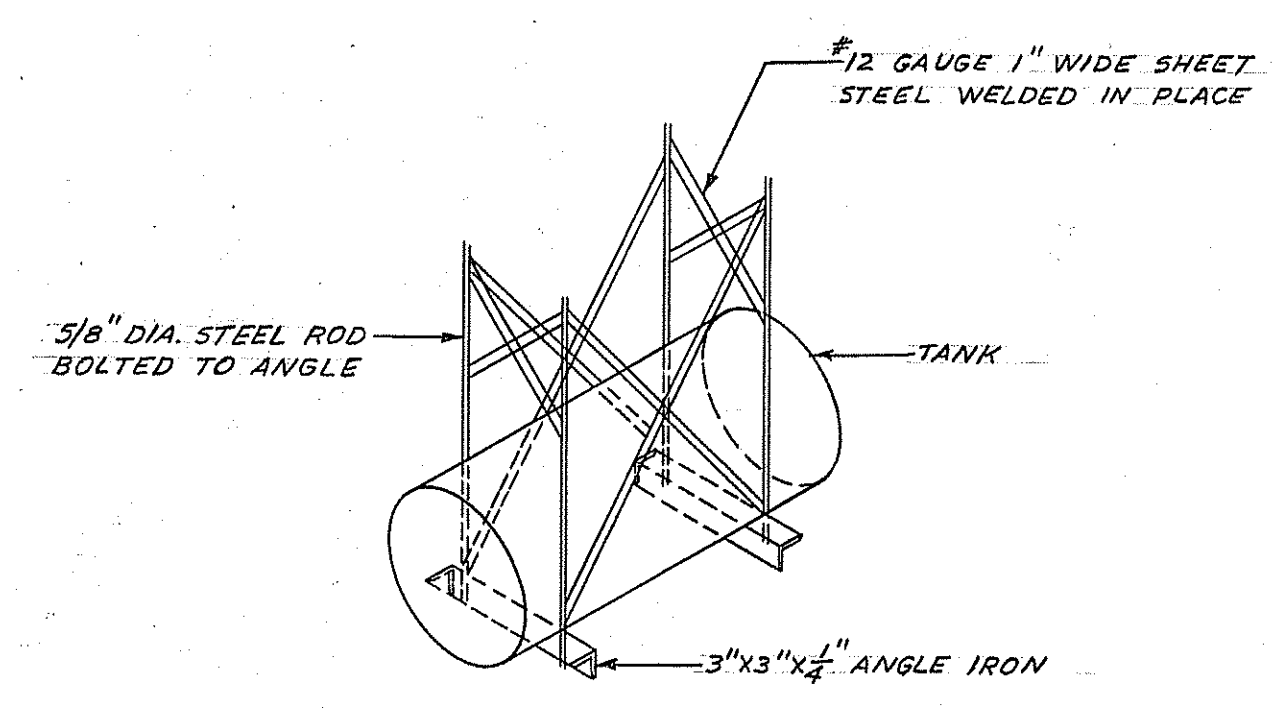
ISOMETRIC - HEATER ROOM PIPING (H-2)  
SCALE - 1/4" = 1'-0"



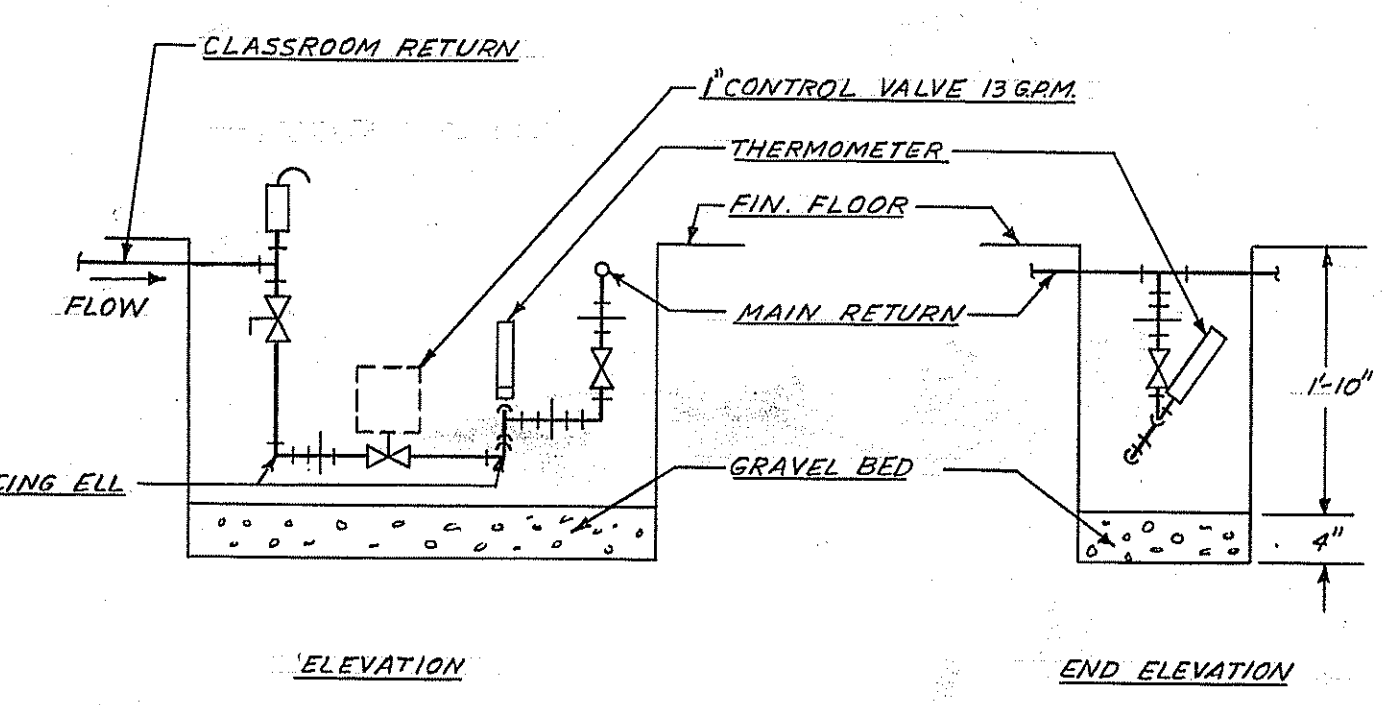
HEATING FLOOR PLAN - KINDERGARTEN  
SCALE 1/4" = 1'-0"



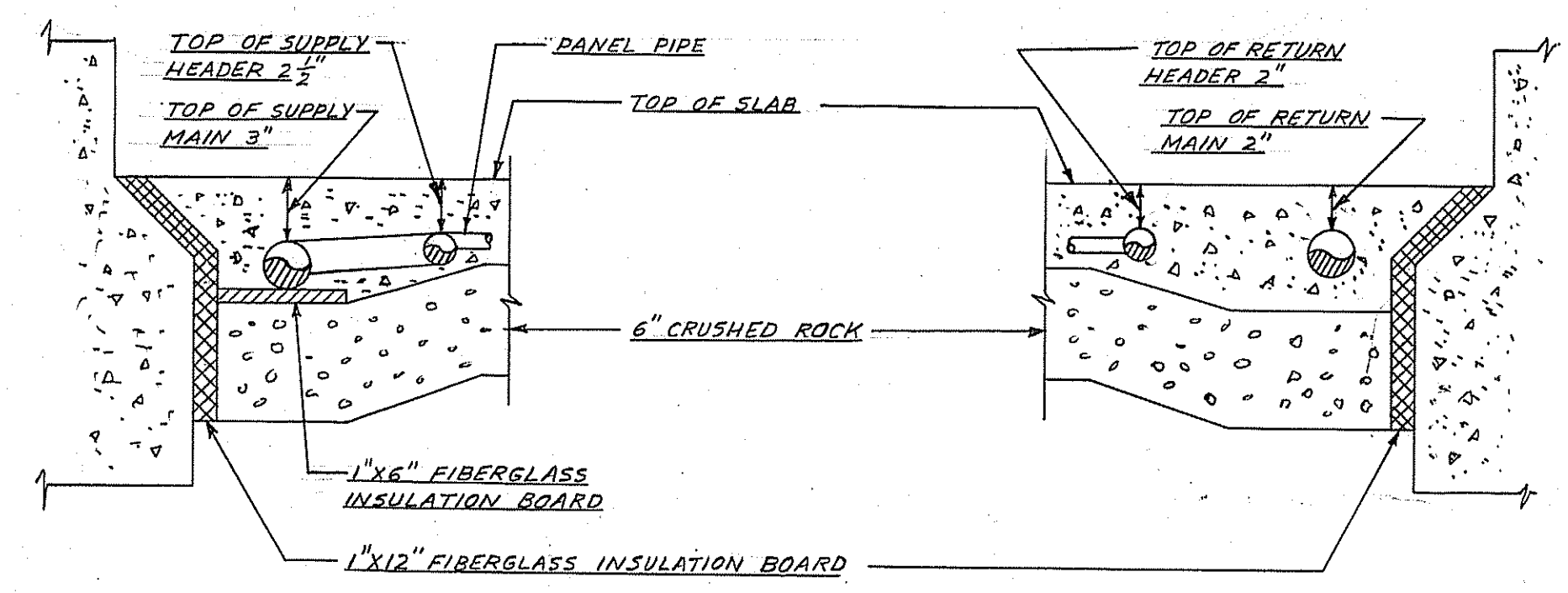
TRENCH PIPE HANGER DETAIL (H-2)  
NO SCALE



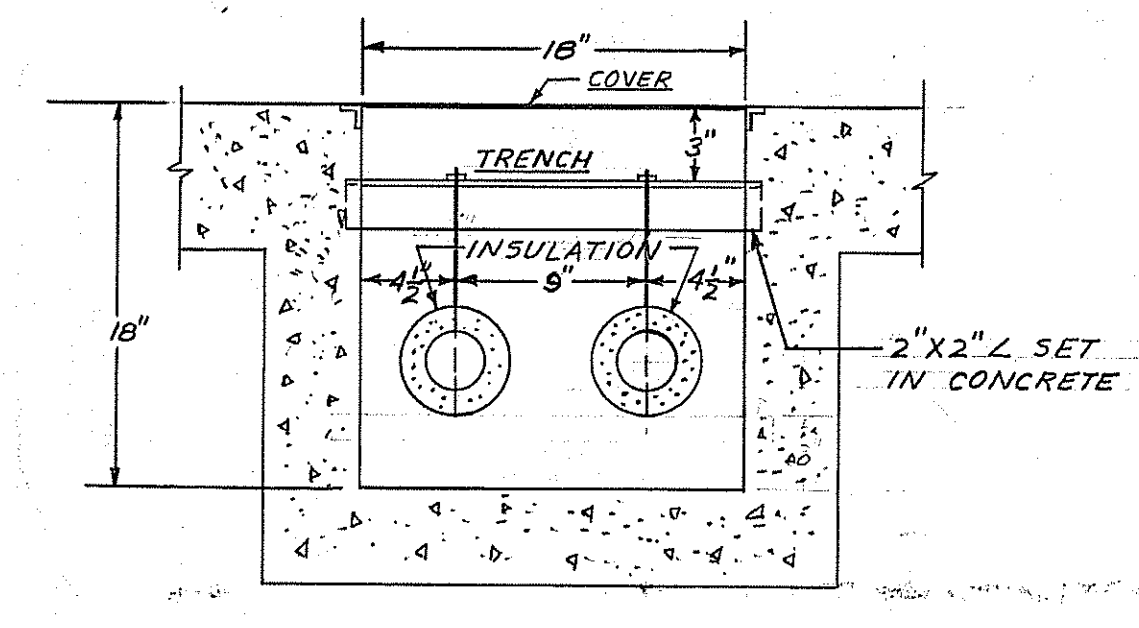
EXPANSION TANK SUPPORT (H-2)  
NO SCALE



TYPICAL VALVE BOX DETAIL (H-2)  
NO SCALE



RADIANT PANEL PIPE LOCATION (H-2)  
NO SCALE



TRENCH DETAIL (H-2)  
NO SCALE

NOTE: CONTRACTOR IS TO VERIFY ALL DIMENSIONS ON THE WORK. THIS DRAWING IS THE PROPERTY OF THE ARCHITECT AND MUST BE RETURNED ON COMPLETION OF THE CONTRACT.

DIVISION OF SCHOOL HOUSE PLANNING

STATE OF CALIFORNIA - DEPARTMENT OF PUBLIC WORKS  
DIVISION OF ARCHITECTURE  
APPROVED NOV 5 - 1953  
11380  
Harry W. Baker  
221 PRINCIPAL ARCHITECTURAL SURVEYOR

BOARD OF TRUSTEES  
FINAL APPROVAL  
Franklin School Addition  
Bakersfield City School District  
Bakersfield California

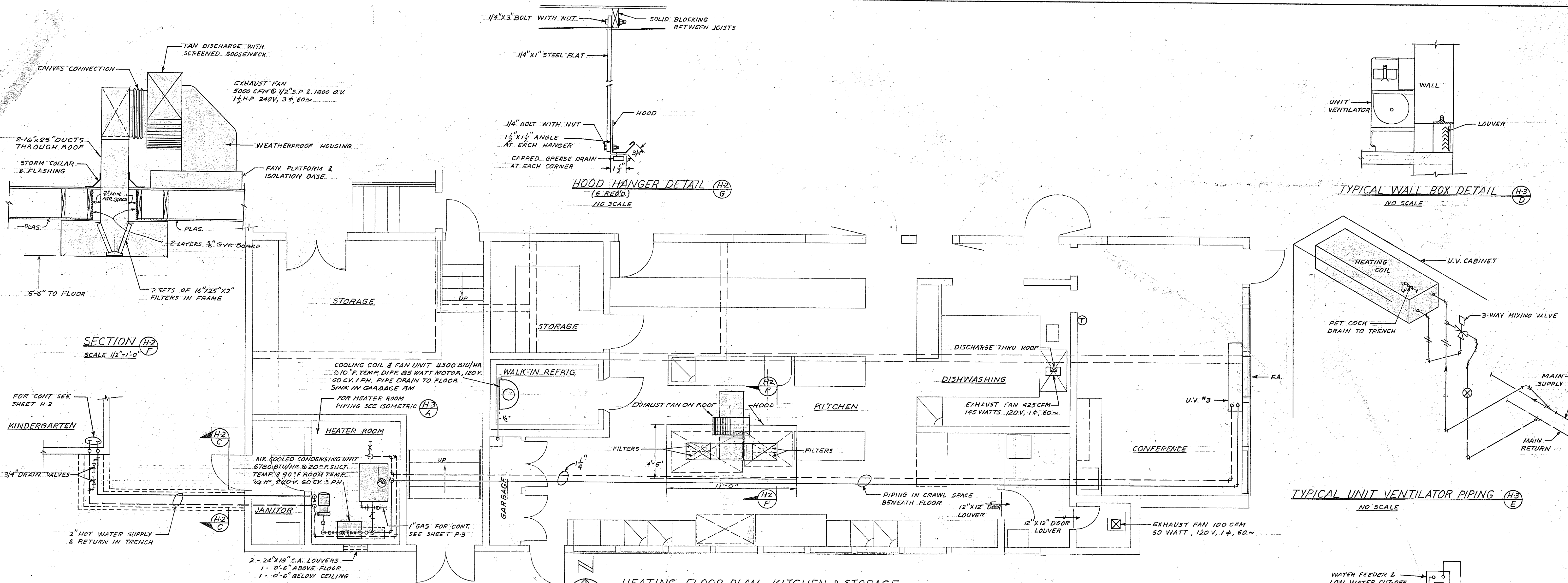
COUNTY SUPERINTENDENT OF SCHOOLS

FRANKLIN SCHOOL ADDITION  
BAKERSFIELD CITY SCHOOL DISTRICT  
BAKERSFIELD CALIFORNIA

C. B. ALFORD ARCHITECT W. J. THOMAS  
602 HABERFELDE BUILDING BAKERSFIELD CALIFORNIA  
PHONE 2-1302

CHESTER D. WALZ  
CONSULTING MECHANICAL ENGINEER  
500 SO. FIGUEROA ST. LOS ANGELES  
DESIGNED J.K. DATE 8-20-53  
DRAWN K.R.P. GALIF. REG. M.E. 7844

H2

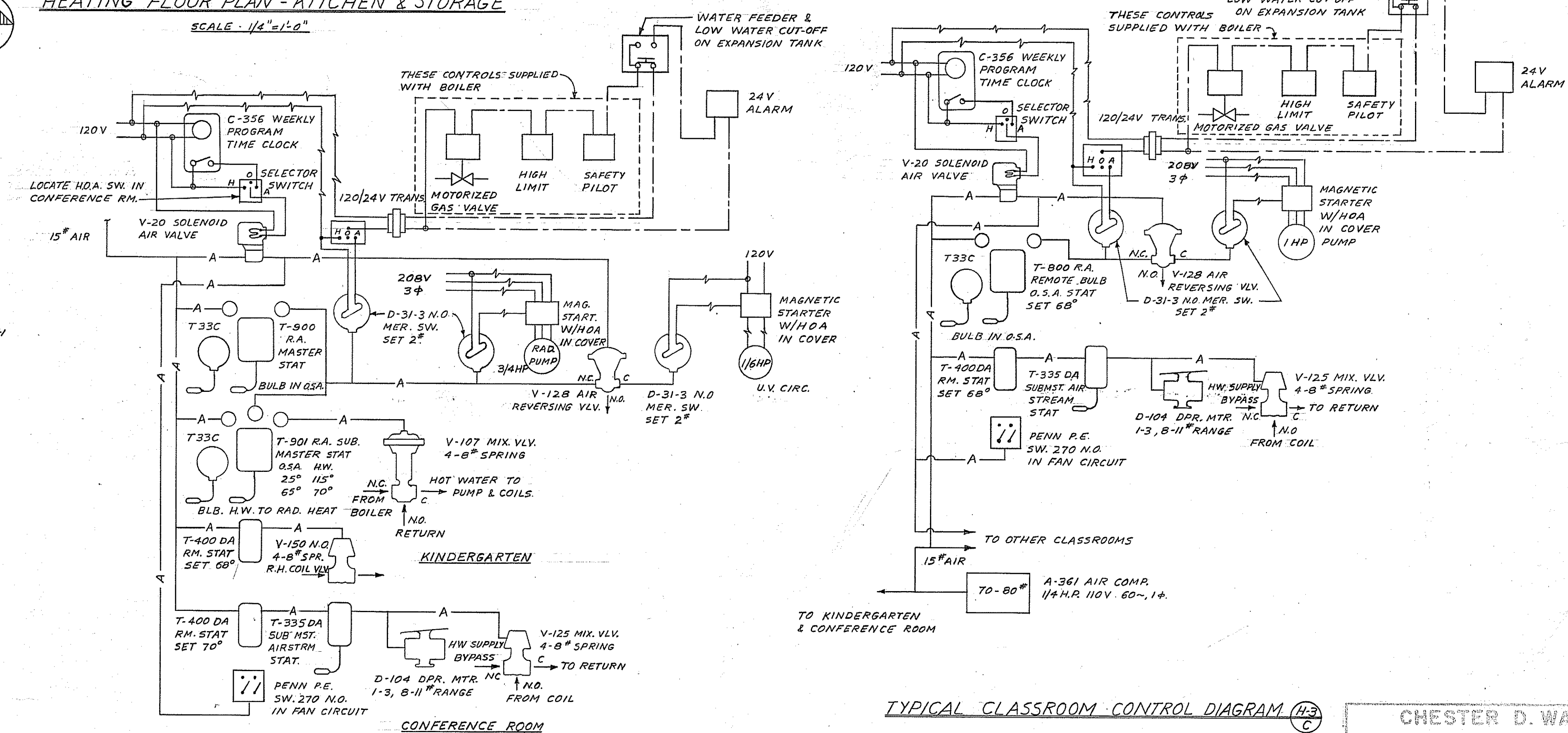


**SECTION (H2)**  
SCALE: 1/2" = 1'-0"

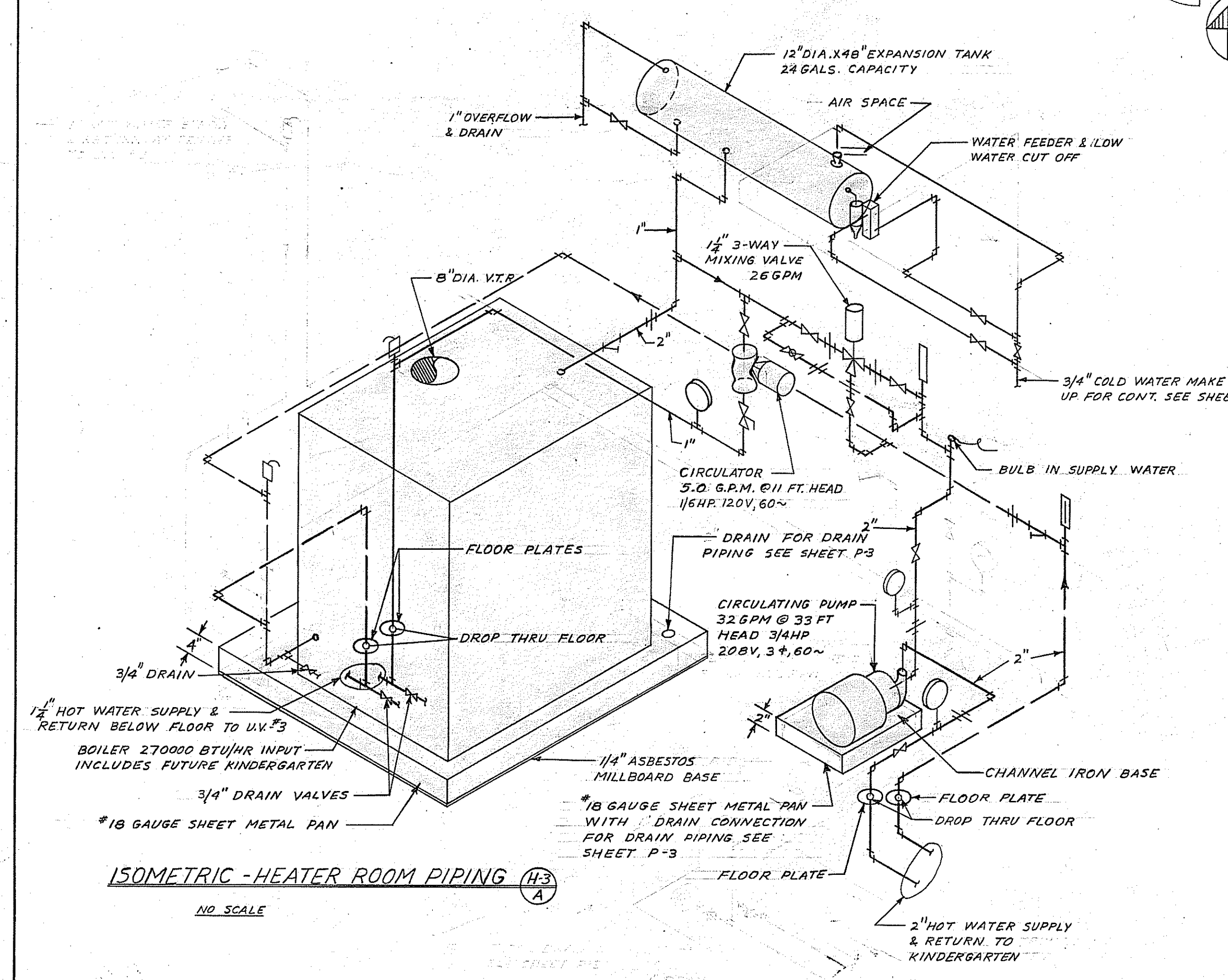
**TYPICAL WALL BOX DETAIL (H3)**  
NO SCALE

**TYPICAL UNIT VENTILATOR PIPING (H3)**  
NO SCALE

**HEATING FLOOR PLAN - KITCHEN & STORAGE**  
SCALE: 1/4" = 1'-0"



**TYPICAL CLASSROOM CONTROL DIAGRAM (H3)**



NOTE: CONTRACTOR IS TO VERIFY ALL DIMENSIONS ON THE WORK. THIS DRAWING IS THE PROPERTY OF THE ARCHITECT AND MUST BE RETURNED ON COMPLETION OF THE CONTRACT.

**DIVISION OF SCHOOL HOUSE PLANNING**

STATE OF CALIFORNIA - DEPARTMENT OF PUBLIC WORKS  
DIVISION OF ARCHITECTURE  
APPROVED NOV 6 - 1953  
11380  
*Harry W. Bellinger*  
REGISTERED PROFESSIONAL ENGINEER

**BOARD OF TRUSTEES**  
FINAL APPROVAL  
*Virginia C. Billinger*

COUNTY SUPERINTENDENT OF SCHOOLS

FRANKLIN SCHOOL ADDITION  
BAKERSFIELD CITY SCHOOL DISTRICT  
BAKERSFIELD CALIFORNIA

**C. B. ALFORD • ARCHITECT • W. J. THOMAS**  
602 HABERFELDE BUILDING  
BAKERSFIELD CALIFORNIA

PHONE 2-1302

SHEET No. **H 3**

**SYMBOLS:-**

- CEILING LIGHTING OUTLET, FIXTURE NO., WATTAGE, CIRCUIT NO. & CONTROLLING SWITCH LETTER SHOWN.
- BRACKET LIGHTING OUTLET.
- FLUSH SQUARE CEILING FIXTURE & J-BOX.
- BULLSEYE PILOT LIGHT, CONTROLLED FROM SWITCH INSIDE REFRIGERATOR ROOM.
- DUPLEX RECEPTACLE 1/2" UNLESS NOTED. W.P. = WEATHERPROOF.
- DUPLEX RECEPTACLE ON FLOOR STAND. SEE SPECS.
- JUNCTION BOX, STANDARD OUTLET BOX & BLANK PLATE UNLESS NOTED.
- MOTOR OUTLET, AS DESCRIBED ON DRAWINGS.
- MOTOR DISCONNECT 1/2HP & LESS (TRUMBULL TT)
- MOTOR DISCONNECT 1/2HP & MORE (TRUMBULL PT)
- PUSHBUTTON, FOR MOTOR STARTER.
- HAND-OFF-AUTO SWITCH OUTLET, 4" SQUARE BOX WITH PLATE AS REQUIRED BY H&V. CONT.
- PUBLIC TELEPHONE OUTLET, 4" SQUARE BOX & PLATE WITH SINGLE BUSHED OPENING.
- SECONDARY CLOCK OUTLET.
- FIRE ALARM BREAK GLASS STATION 4-6"
- BELL, 6" UNLESS NOTED OTHERWISE.
- SINGLE POLE WALL SWITCH 4-6"
- SINGLE POLE WALL SWITCH WITH SUBSCRIPT 4-6"
- THREE WAY WALL SWITCH.
- SINGLE POLE WALL SWITCH WITH PILOT LIGHT.
- SINGLE POLE WALL SWITCH KEY OPERATED.

- LIGHTING PANELBOARD.
- SIGNAL & FIRE ALARM TERMINAL.

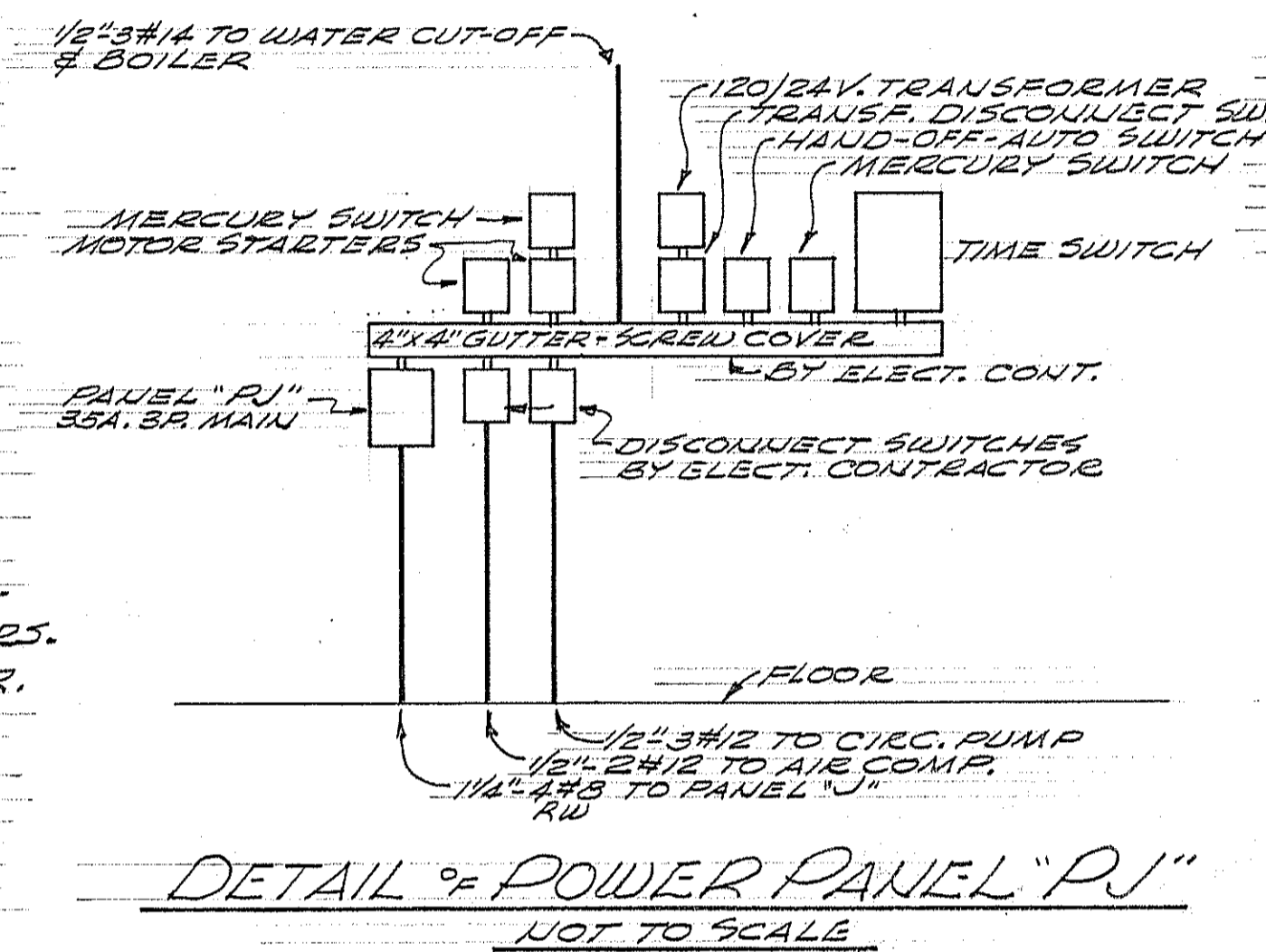
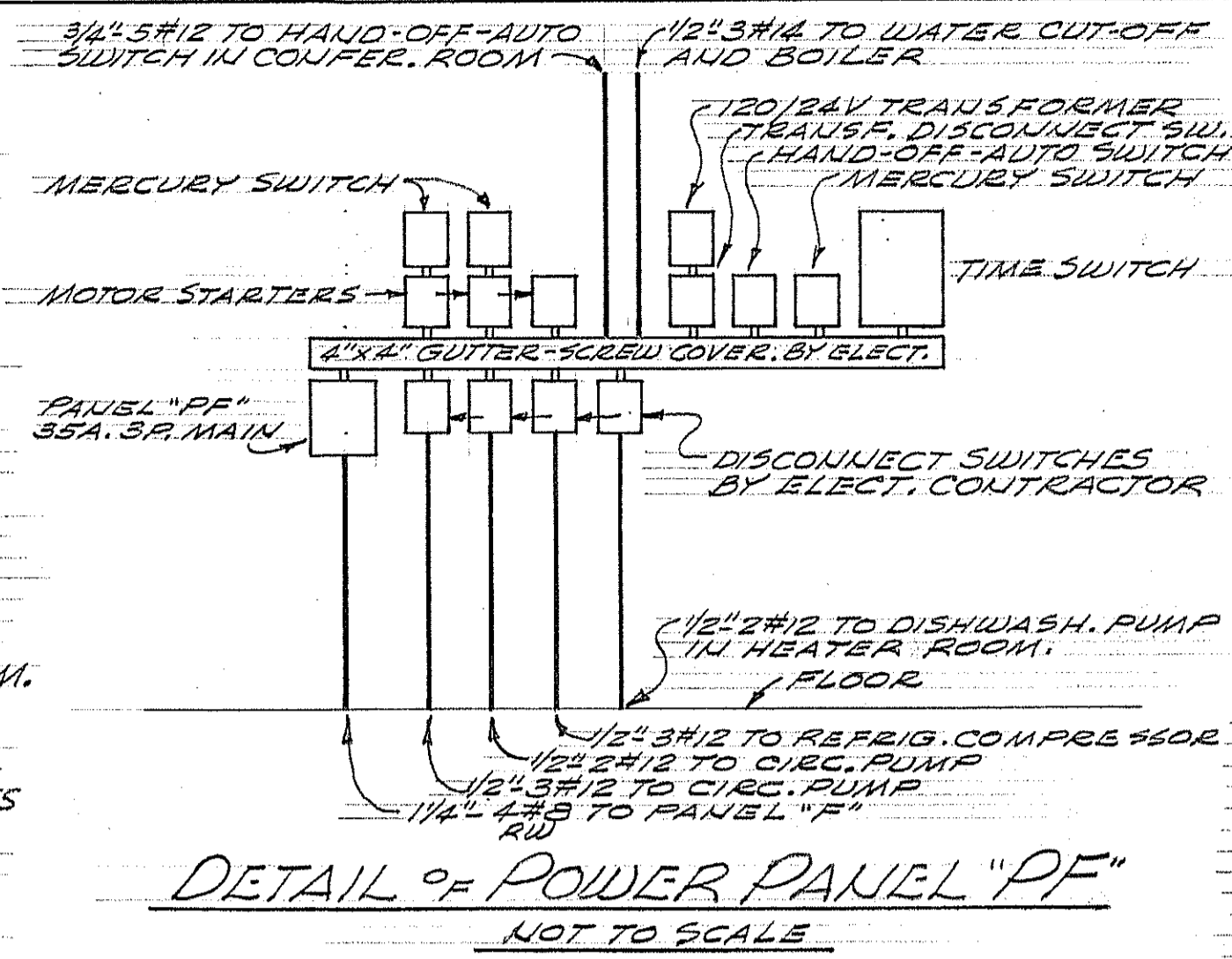
- CONDUIT RUN CONCEALED IN WALLS OR CEILING.
- C.O. = CONDUIT ONLY WITH PULL WIRE.
- CONDUIT RUN CONCEALED UNDER FLOOR, UNDERGROUND OR IN TUNNEL.
- HOMERUN TO CIRCUITS #1-3-5 ON PANEL "F". ALL WIRE SHALL BE #12 UNLESS NOTED OTHERWISE. ALL CONDUIT SHALL CONFORM TO N.E. CODE SIZE UNLESS MARKED LARGER.

**FIXTURES:-**

- F#1 CONCENTRIC RING INDIRECT FIXTURE WITH SWIVEL HANGER CAUPOY, STEM & 500 WATT SILVER BOWL LAMP. SMOOT-HOLMAN CO. #CX-500-S. ALTER STEM SO THAT FIXTURE LENGTH IS 42" O.A.
- F#2 CONCENTRIC RING INDIRECT FIXTURE WITH SWIVEL HANGER CAUPOY, STEM & 750 WATT SILVER BOWL LAMP. SMOOT-HOLMAN CO. #CX-1000-S. ALTER STEM SO THAT FIXTURE LENGTH IS 42" O.A.
- F#3 FLUSH SQUARE CEILING FIXTURE WITH CORNING PRISMATIC DROP LENS, ATTACHED J-BOX AND 200 OR 300 WATT LAMP AS INDICATED. WAGNER-WOODRUFF CO. #50153/55. STAINLESS STEEL FINISH TRIM.
- F#4 FLUSH SQUARE CEILING FIXTURE WITH CORNING PRISMATIC DROP LENS, ATTACHED J-BOX AND 100 WATT LAMP. WAGNER-WOODRUFF CO. #30153/55 WITH STAINLESS STEEL FINISH TRIM.
- F#5 DRUM SHAPED GLASS FIXTURE WITH 2-50 OR 2-75 WATT LAMPS AS INDICATED. SMOOT-HOLMAN CO. #LH-1110.
- F#6 PORCELAIN KEYLESS RECEPTACLE WITH WATTAGE AS INDICATED. ALABAX #3141.
- F#7 VAPORTIGHT ENCLOSING GLOBE FIXTURE WITH GLOBE AND CAST SCREW GUARD AND 150 WATT LAMP. CROUSE-HINDS CO. #V12009, VC12009 OR VL12009 AS REQUIRED FOR COND. ENTRANCE.
- F#8 VAPORTIGHT ENCLOSING GLOBE FIXTURE, BRACKET TYPE, WITH GLOBE, CAST GUARD & 100 WATT LAMP. CROUSE-HINDS #VGR 216.
- F#9 VAPORTIGHT FIXTURE WITH CROUSE-HINDS #V63 GLASS AND GASKET, ARB-40 ADAPTER, SERIES GUF CONDULET & 100 WATT LAMP.

**SWITCHBOARD NOTES:-**

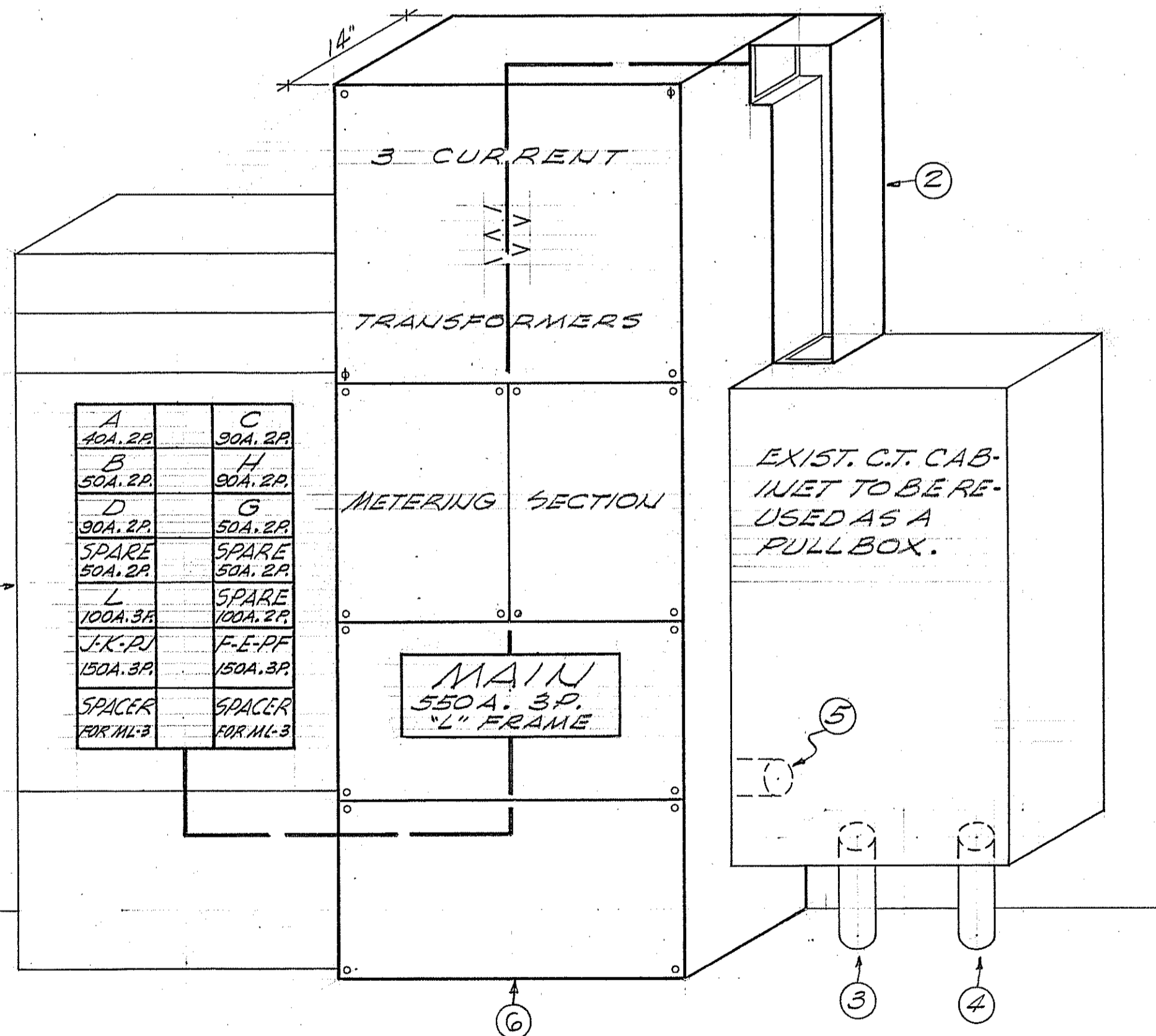
- ① EXIST. MAIN SWITCHBOARD CABINET. REMOVE BREAKERS & BUSING & INSTALL NEW 3φ BUSING & BREAKERS.
- ② NEW 6"X6" GUTTER WITH SEALABLE SCREW COVER.
- ③ EXIST. FEEDER 3"-3-500 MCM. REMOVE EXIST. CABLES & SALVAGE. INSTALL NEW 3-350 MCM-RW & 1# 4/0 TW.
- ④ EXIST. 3" C.O. INSTALL NEW 3-350 MCM-RW & 1# 4/0 TW.
- ⑤ EXISTING CONDUIT & WIRE TO BE REMOVED.
- ⑥ NEW SERVICE SECTION.



**NOTES:- FOR SITE PLAN.**

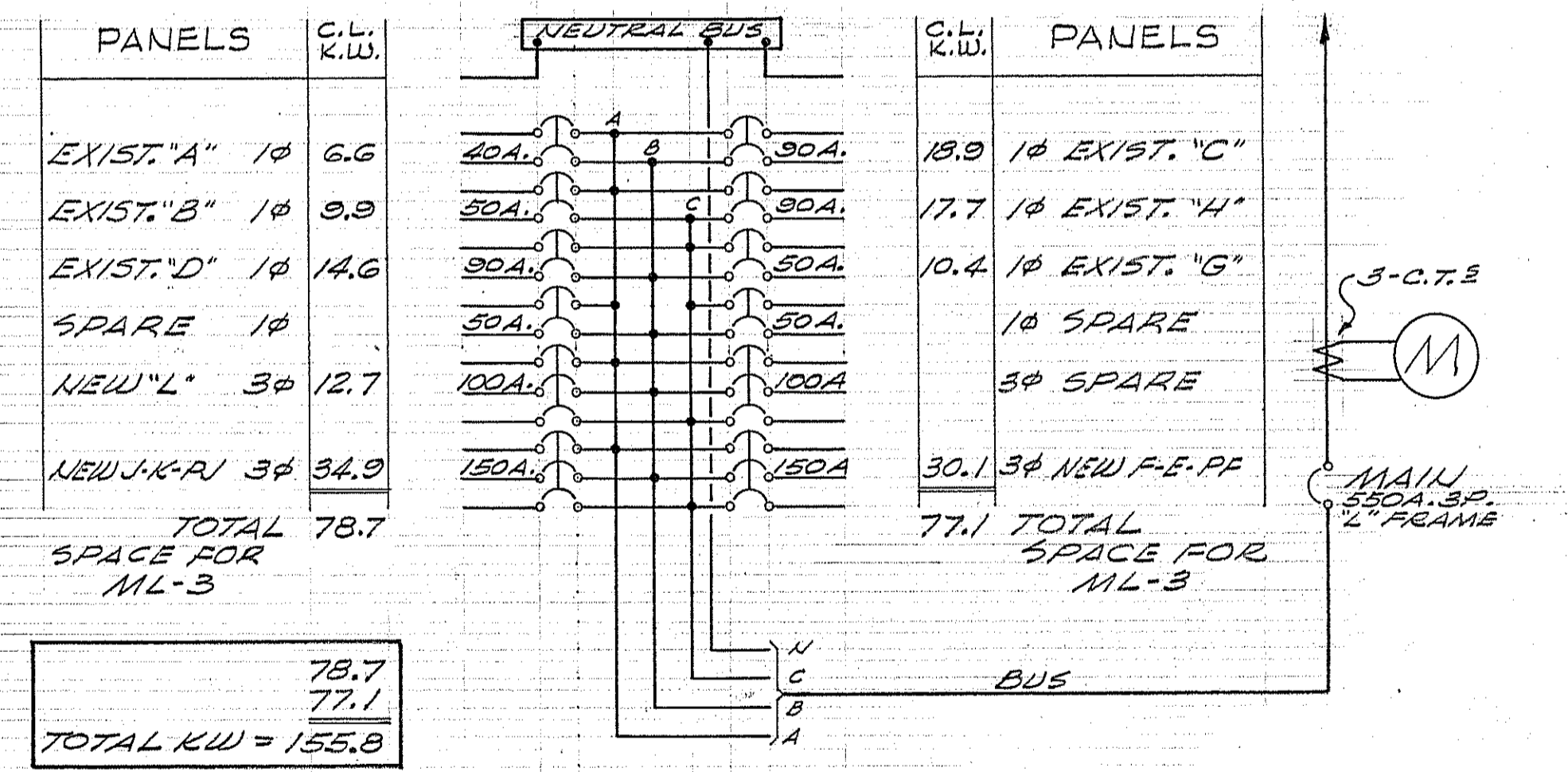
- ① 2-3#2 RW & 1#2 TW.
- ② 1/4"-1#1/4" SIGNAL & FIRE ALARM.
- ③ 2 1/2"-3#3/8 RW & 1#1 TW.
- ④ 3" 3#4/8 RW & 1#3/8 TW.
- ⑤ 1" 10#1/4" SIGNAL & 3/4" 4#1/4" FIRE ALARM.
- ⑥ UNDERGROUND PULL BOX FLUSH IN SIDEWALK. 3'-0" X 3'-0" X 2'-0" WITH WATERTIGHT CAST IRON COVER & FRAME. CONSTRUCT BOX OF 6" REINFORCED CONCRETE WALLS & BOTTOM.
- ⑦ PICK UP 3/4" SIGNAL & FIRE ALARM STUBS AT END OF EXIST. TUNNEL & EXTEND AS INDICATED 5'-0" BEYOND EDGE OF NEW WALK.
- ⑧ 2" C.O. STUB FOR FUTURE FROM PULL BOX. +5'-0"
- ⑨ EXISTING FIRE ALARM J-BOX IN TUNNEL. CONNECT NEW CONDUIT & WIRES.
- ⑩ NEW 8"X8"X3" SIGNAL J-BOX IN TUNNEL WITH TERMINALS.
- ⑪ EXISTING SERVICE CONDUIT & NEW CABLES. SEE SWBD.
- ⑫ EXISTING DISTRIBUTION SWBD. CUT THRU SLAB & OVER INTO TUNNEL TO INSTALL NEW FEEDERS & STUB.
- ⑬ 3"-3#4/8 RW & 1#3/8 TW, 2 1/2"-3#3/8 RW & 1#3/8 TW AND 2" C.O. 1" C.O. STUB FOR FUTURE +5'-0" BEYOND WALK.
- ⑭ 2 1/2"-3#3/8 RW & 1#3/8 TW.
- ⑮ 2-3#2 RW & 1#4 TW.
- ⑯ EXISTING SERVICE POLE. SEE SPECS FOR MATERIALS & INSTALLATION.
- ⑰ 18"X18"X5" PULL BOX WITH SCREW COVER IN TUNNEL.
- ⑱ SIGNAL J-BOX. SEE 1/4" SCALE PLAN SHEET #E-3.
- ⑲ 1/4" C.O. FOR FUTURE 5'-0" FROM BUILDING.

**NOTE:**  
SEAL ALL OPENINGS WHERE CONDUITS ENTER THRU FOOTINGS OF BUILDING OR TUNNEL WALLS.



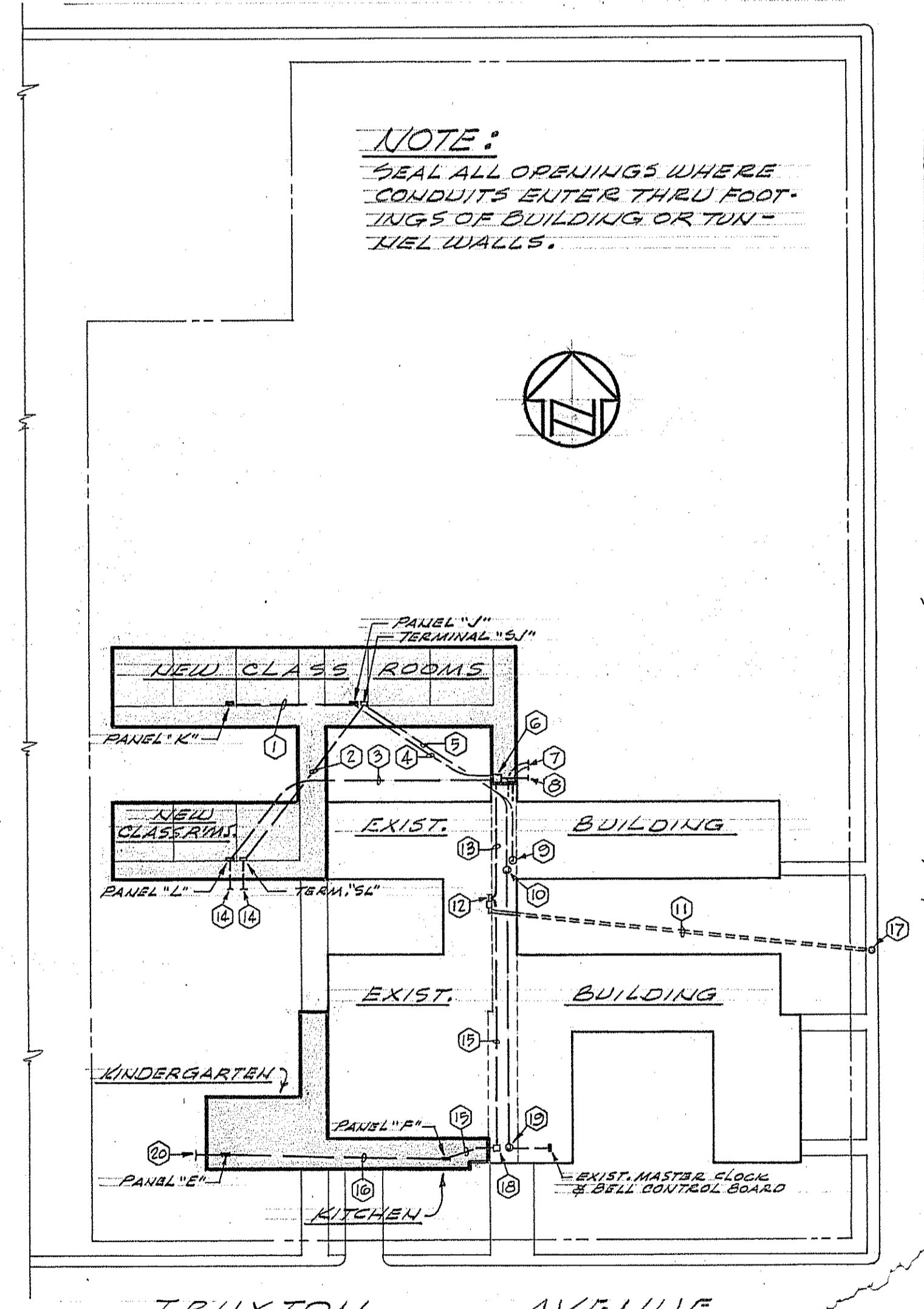
**SERVICE CONDUIT CALCULATIONS**

AREA OF 3" CONDUIT	= 7.380 SQ. IN.
USE PERMITTED 40%	= 2.95 SQ. IN.
AREA OF 350 MCM, RW = .7620	
3 x .7620	= 2.286 SQ. IN.
AREA OF 4/0 TW	= .3904 SQ. IN.
TOTAL	= 2.6764 SQ. IN.



ALL BREAKER FRAMES SHALL BE "ML-1" OR "ML-3".

**NOTE**  
THE SERVICE & METERING SECTION SHALL BE APPROVED BY THE PACIFIC GAS & ELECTRIC CO. BEFORE FABRICATION.



NOTE: CONTRACTOR IS TO VERIFY ALL DIMENSIONS ON THE WORK. THIS DRAWING IS THE PROPERTY OF THE ARCHITECT AND MUST BE RETURNED ON COMPLETION OF THE CONTRACT.

ALBERT E BYLER  
ELECTRICAL ENGINEER  
3704 WEST THIRD STREET  
LOS ANGELES 5, CALIFORNIA  
DUNKIRK 7-8828  
Albert E Byler

DIVISION OF SCHOOL HOUSE PLANNING

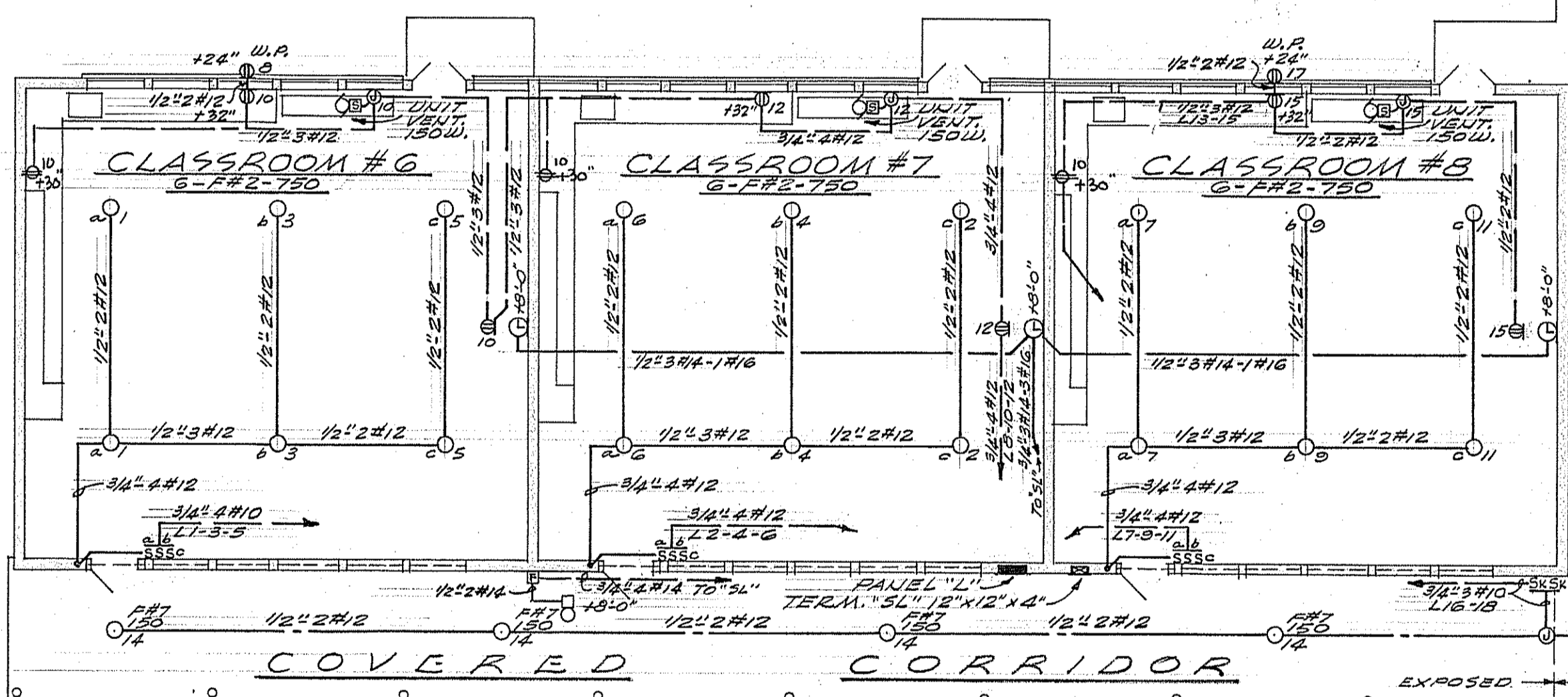
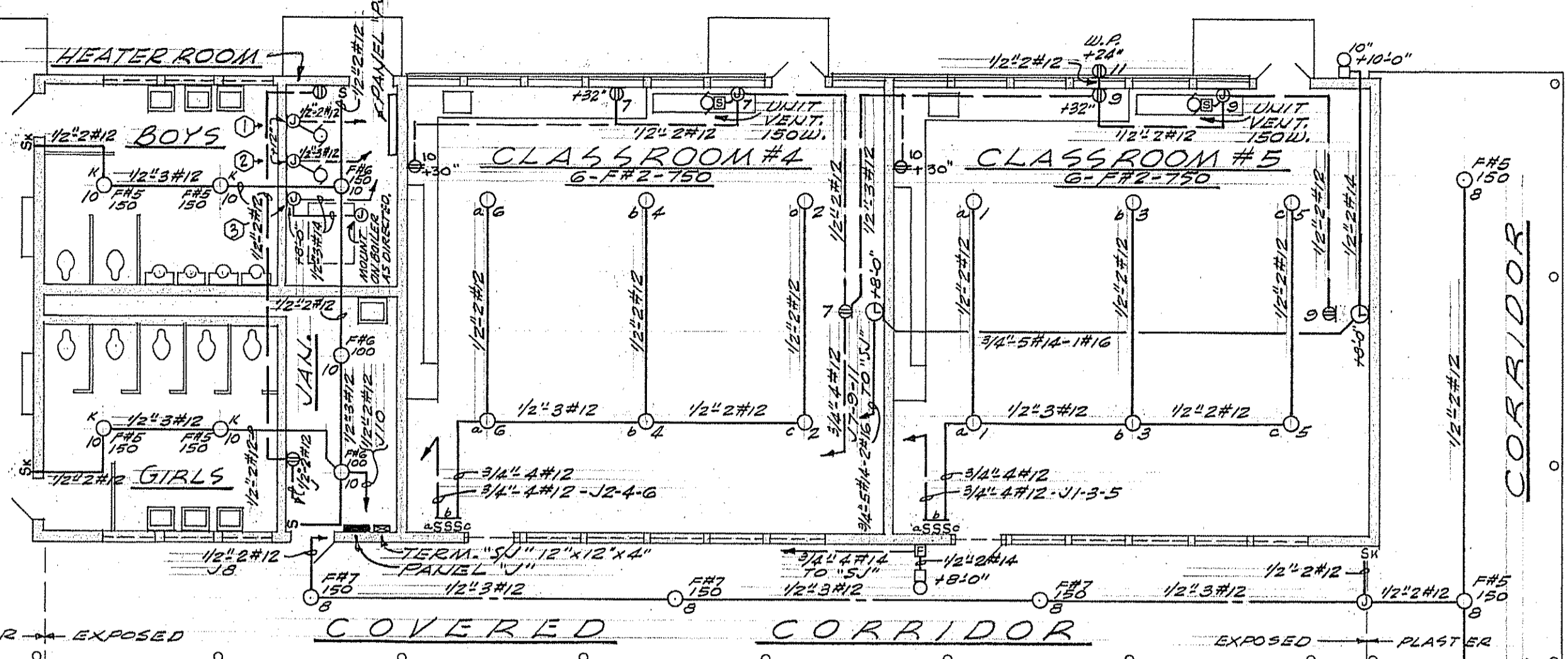
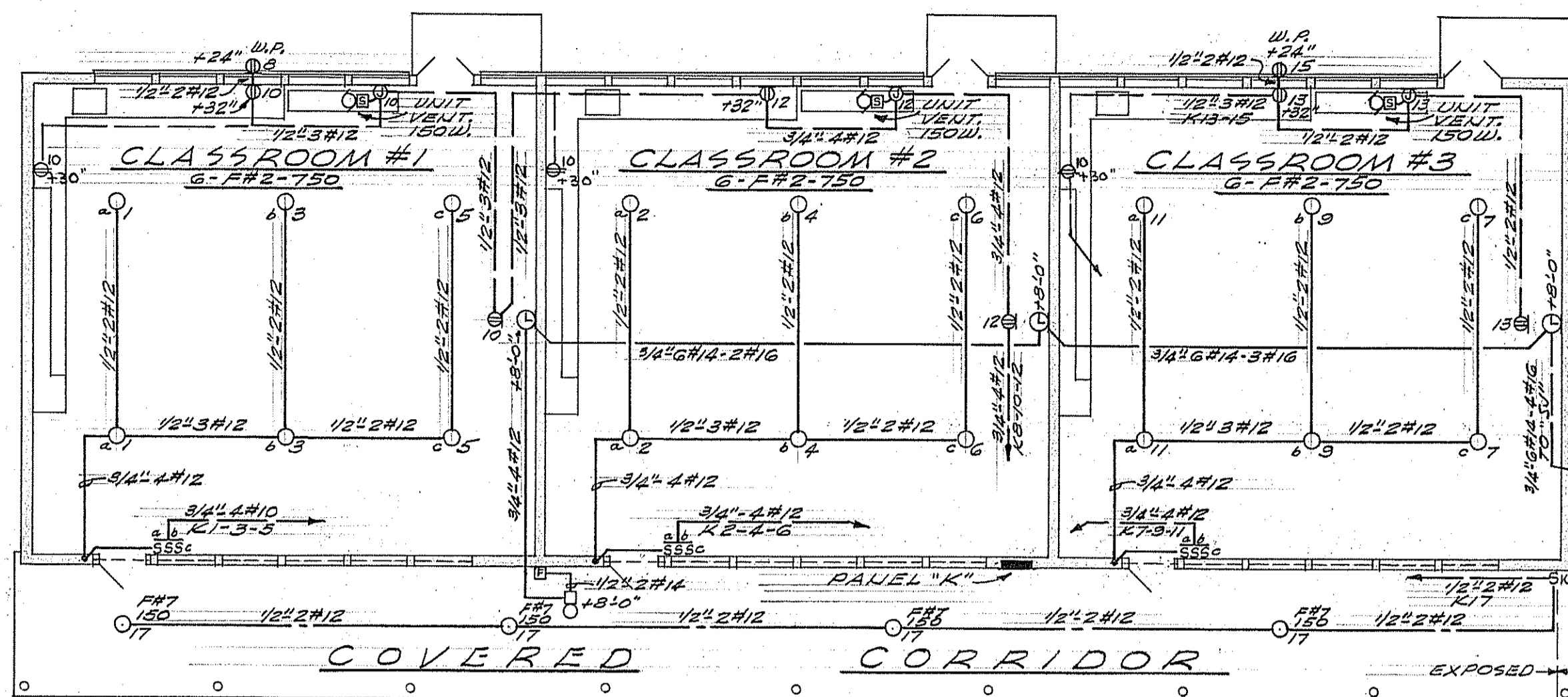
STATE OF CALIFORNIA - DEPARTMENT OF PUBLIC WORKS  
DIVISION OF ARCHITECTURE  
APPROVED NOV 6 - 1953  
11380  
James M. Bellinger  
BY ELECTRICAL ENGINEER

COUNTY SUPERINTENDENT OF SCHOOLS

BOARD OF TRUSTEES  
FINAL APPROVAL  
Virginia C. Bellinger

FRANKLIN SCHOOL ADDITION  
BAKERSFIELD - CITY SCHOOL DISTRICT  
BAKERSFIELD - CALIFORNIA

C. B. ALFORD • ARCHITECT • W. J. THOMAS  
602 HABERFELDE BUILDING - PHONE 2-1302  
BAKERSFIELD - CALIFORNIA



FLOOR PLANS  
CLASSROOMS #1-8 INCL.  
SCALE 1/8"=1'-0"

BREAKER NO.	CIRCUIT NO.	OUTLETS NO.	MISC.	CONNECTED LOAD			LOCATION
				PA	PB	PC	
1	20	3		1500			CLASSROOM #5
		3			1500		" #5
		3				1500	" #6
		3		1500			" #4
		4			1500		" #4
		6		510		1500	" #4
		9			510		" #5
		8		300		1000	OUTSIDE RECEPT. COVERED CORRIDOR
		10			950		TOILETS, JAU. & HTR. RMS.
		12				500	SPARE
3	70		PAN. "K"	50.0A		50.0A	PANEL "K" SUB FEED
3	35		PAN. "J"	10.0A		10.0A	PANEL "J" SUB FEED
TOTAL LIGHTING WATTS				4410	4460	4500	
TOTAL LIGHTING AMPS				36.8	37.1	37.5	
TOTAL MISC. AMPS				60.0	60.0	56.7	
TOTAL AMPS				96.8	97.1	94.2	

PANEL "J"

BREAKER NO.	CIRCUIT NO.	OUTLETS NO.	MISC.	CONNECTED LOAD			LOCATION
				PA	PB	PC	
1	20	3		1500			CLASSROOM #6
		3			1500		" #6
		3		1500			" #7
		4			1500		" #7
		6		1500		1500	" #3
		9			1500		" #3
		11			1500		" #3
		8		1000			OUTSIDE RECEPT. CLASSROOM #6
		10			510		CLASSROOM #7
		12			510		SPARE
		13				510	CLASSROOM #8
		15			510		OUTSIDE RECEPT. COVERED CORRIDOR
		17		600		1050	COVERED CORRIDOR
		16			1050		SPARE
TOTAL LIGHTING WATTS				6100	6570	6010	
TOTAL LIGHTING AMPS				50.8	54.7	54.0	
TOTAL MISC. AMPS				50.8	54.7	50.0	
TOTAL AMPS				101.6	109.4	104.0	

PANEL "L"

BREAKER NO.	CIRCUIT NO.	OUTLETS NO.	MISC.	CONNECTED LOAD			LOCATION
				PA	PB	PC	
1	20	3		1500			CLASSROOM #1
		3			1500		" #1
		3		1500		1500	" #2
		4			1500		" #2
		6		1500		1500	" #2
		7			1500		" #3
		9			1500		" #3
		11			1500		" #3
		8		1000		510	OUTSIDE RECEPT. CLASSROOM #1
		10			510		" #2
		12			510		" #2
		13		510			" #3
		15			1000		OUTSIDE RECEPT. COVERED CORRIDOR
		17				600	SPARE
		16					SPARE
		18					SPARE
TOTAL LIGHTING WATTS				6010	6010	5610	
TOTAL LIGHTING AMPS				50.0	50.0	46.7	
TOTAL MISC. AMPS				50.0	50.0	46.7	
TOTAL AMPS				100.0	100.0	93.4	

PANEL "K"

- HEATER ROOM EQUIP.
- ① AIR COMPRESSOR 1/4HP 120V 1Ø
  - ② CIRC. PUMP 1HP 208V 3Ø
  - ③ J-BOX AT END OF EXPANSION TANK FOR WATER FEED AND LOW WATER CUT-OFF.

NOTE: CONTRACTOR IS TO VERIFY ALL DIMENSIONS ON THE WORK. THIS DRAWING IS THE PROPERTY OF THE ARCHITECT AND MUST BE RETURNED ON COMPLETION OF THE CONTRACT.

ALBERT E BYLER  
ELECTRICAL ENGINEER  
3704 WEST THIRD STREET  
LOS ANGELES 5, CALIFORNIA  
DUKIRK 7-9828  
*Albert E. Byler*

DIVISION OF SCHOOL  
HOUSE PLANNING

STATE OF CALIFORNIA - DEPARTMENT OF PUBLIC WORKS  
DIVISION OF ARCHITECTURE  
APPROVED NOV 6 - 1953  
11380  
*James M. Paul*

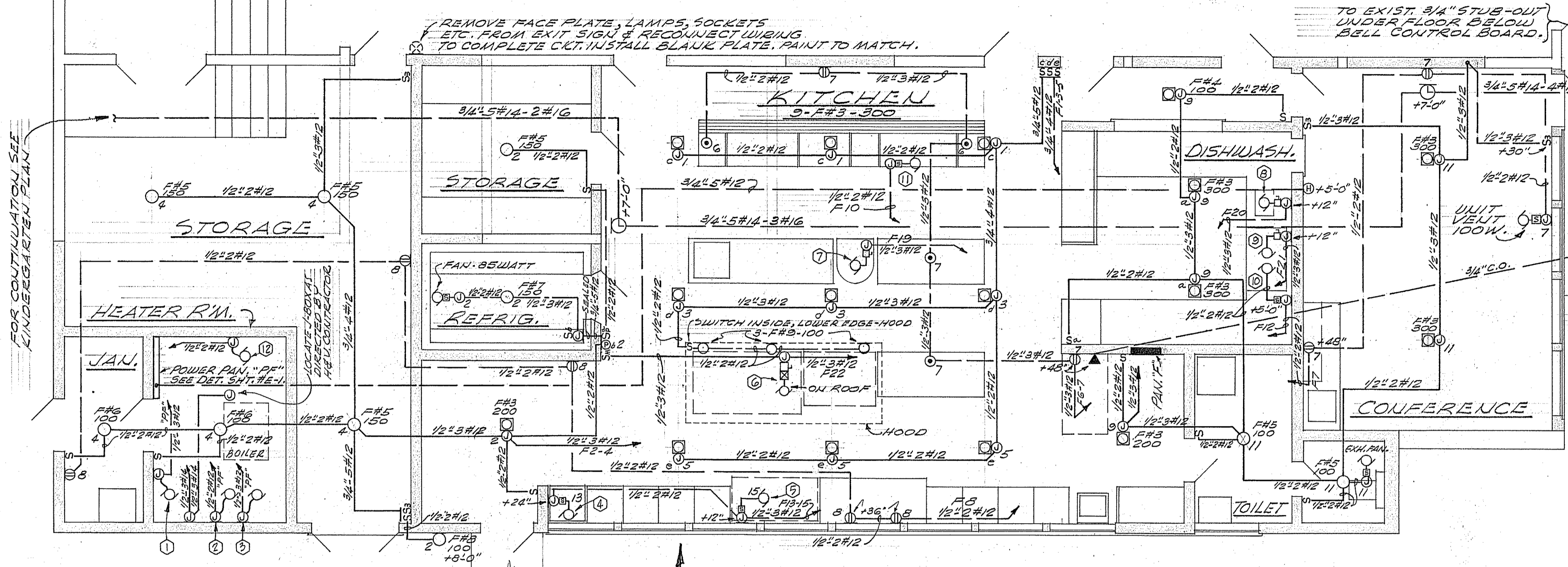
COUNTY SUPERINTENDENT  
OF SCHOOLS

BOARD OF TRUSTEES  
FINAL APPROVAL  
*Virginia C. Bellinger*

FRANKLIN SCHOOL ADDITION  
BAKERSFIELD CITY SCHOOL DISTRICT  
BAKERSFIELD CALIFORNIA

C. B. ALFORD • ARCHITECT • W. J. THOMAS  
602 HABERFELDE BUILDING  
BAKERSFIELD CALIFORNIA  
PHONE 2-1302

EXISTING CAFETERIA



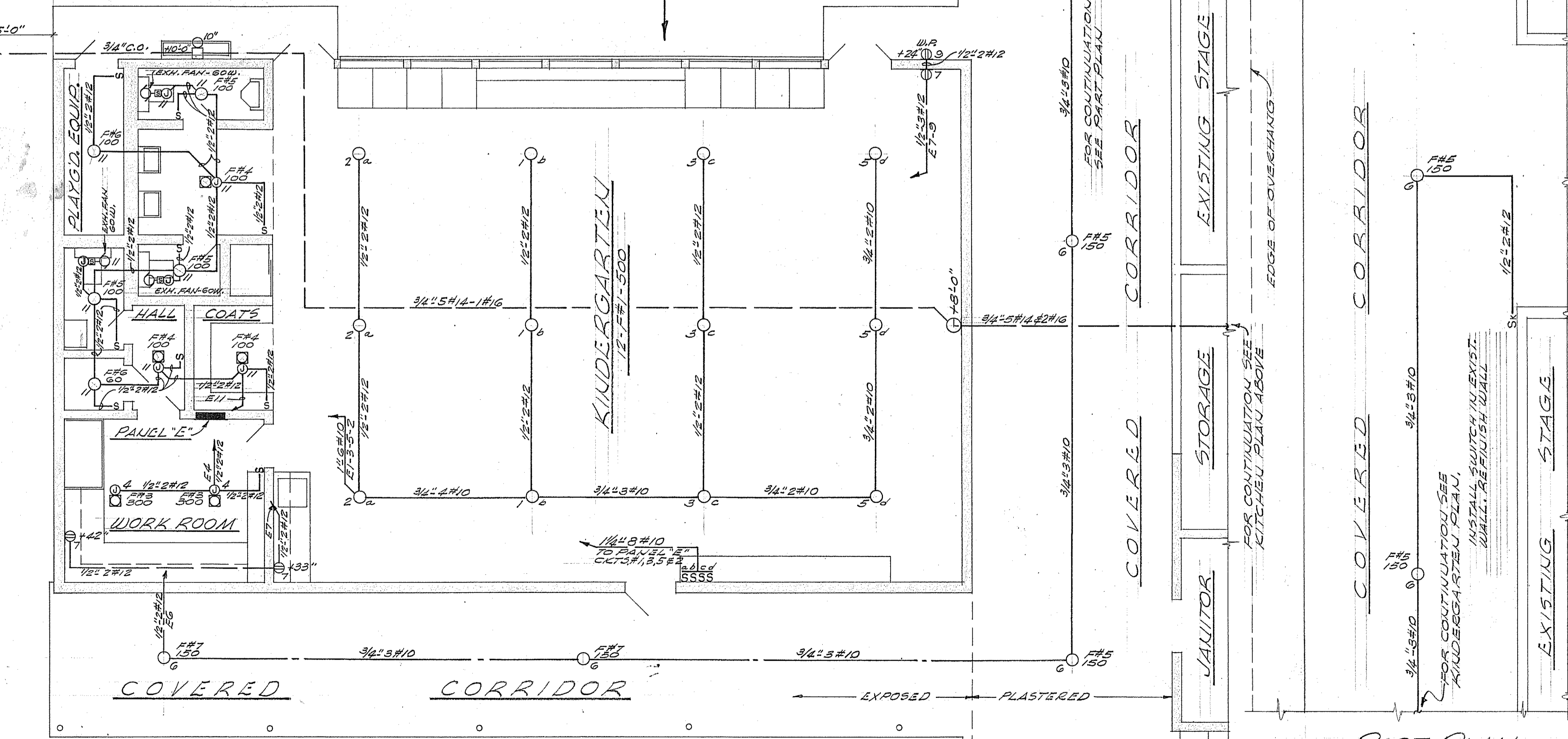
**LIST OF KITCHEN & HEATER RM. EQUIP.**

1	CIRC. PUMP 3/4HP, 208V, 3Φ.	7	MIXER 1/2HP, 208V, 3Φ.
2	CIRC. PUMP 1/4HP, 120V, 1Φ.	8	GARBAGE DISR. 1/2HP, 208V, 3Φ.
3	REF. COMP. 3/4HP, 208V, 3Φ.	9	DISHWASHER 1HP, 208V, 3Φ.
4	PEELER 1/3HP, 120V, 1Φ.	10	HOOD EXH. FAN 1/2HP, 120V, 1Φ.
5	REFRIG. 1/3HP, 120V, 1Φ.	11	ICE CREAM CAB. 1/4HP, 120V, 1Φ.
6	HOOD EXH. FAN 1 1/2HP, 208V, 3Φ.	12	CIRC. PUMP 1 1/5HP, 120V, 1Φ.

ON KITCHEN ROOF.

KITCHEN & STORAGE PLAN  
SCALE 1/4" = 1'-0"

KINDERGARTEN PLAN  
SCALE 1/4" = 1'-0"



PART PLAN  
SCALE 1/4" = 1'-0"

BREAKER	CIRCUIT	OUTLETS	MISC.	CONNECTED LOAD			LOCATION
				WA	AMPS	VA	
1	20	1		300			KITCHEN
1	20	3			1200		KITCHEN
1	20	3				900	KITCHEN
1	20	2	1 FAN	685		650	STORAGE, REF. & KITCHEN
1	20	2	5			1000	STORAGE, JAN. & HTR. RM.
1	20	6	2				KITCHEN
1	20	7	7 FAN	1180			KITCHEN & CONF.
1	20	9	4		300		DISHWASH. & KITCHEN
1	20	11	4	1 FAN		360	CONF. & REST RM.
1	20	8	5		900		JAN., STORAGE & KITCHEN
1	15	10	1 1/2HP		575		ICE CREAM CABINET
1	15	12	1 FAN			145	HOOD EXHAUST FAN
1	15	13	1 1/2HP		670		PEELER
1	15	15	1 1/2HP		670		REFRIGERATOR
1	15	17				700	SPARE
1	20	14					SPARE
1	20	16					SPARE
1	20	18					SPARE
3	15	19	1 1/2HP	2.2A.	2.2A.	2.2A.	MIXER
3	15	20	1 1/2HP	2.2A.	2.2A.	2.2A.	GARBAGE DISPOSAL
3	15	21	1 1/2HP	3.7A.	3.7A.	3.7A.	DISHWASHER
3	20	22	1 1/2HP	5.3A.	5.3A.	5.3A.	EXHAUST FAN
3	50	23		29.5A.	25.8A.	28.2A.	PANEL "E" SUB-FEED
3	35	24		10.0A.	10.0A.	10.0A.	PANEL "F" SUB-FEED
TOTAL LIGHTING WATTS				4335	3303	3703	
TOTAL LIGHTING AMPS				35.8	31.8	30.9	
TOTAL MISC. AMPS				52.9	49.2	51.6	
TOTAL AMPS				88.7	81.0	82.5	

PANEL "F"

BREAKER	CIRCUIT	OUTLETS	MISC.	CONNECTED LOAD			LOCATION
				WA	AMPS	VA	
1	20	1		1500			KINDERGARTEN
1	20	3			1500		"
1	20	5			1500		"
1	20	2				600	WORK ROOM
1	20	4				800	COVERED CORR.
1	20	6					KINDER. & W.G.
1	20	7	3	540		1000	EXTERIOR
1	20	9	7			980	TOILET & COA.
1	20	8	3 FANS				SPARE
1	20	10					SPARE
1	20	12					SPARE
TOTAL LIGHTING WATTS				3540	3100	3380	
TOTAL LIGHTING AMPS				28.5	25.8	28.2	
TOTAL MISC. AMPS				29.5	25.8	28.2	
TOTAL AMPS				58.0	51.6	56.4	

PANEL "E"

NOTE: CONTRACTOR IS TO VERIFY ALL DIMENSIONS ON THE WORK. THIS DRAWING IS THE PROPERTY OF THE ARCHITECT AND MUST BE RETURNED ON COMPLETION OF THE CONTRACT.

ALBERT E. BYLER  
ELECTRICAL ENGINEER  
3704 WEST THIRD STREET  
LOS ANGELES 5, CALIFORNIA  
DUPLICATE 7-8928  
Albert E. Byler

DIVISION OF SCHOOL  
HOUSE PLANNING

STATE OF CALIFORNIA - DEPARTMENT OF PUBLIC WORKS  
DIVISION OF ARCHITECTURE  
APPROVED NOV 6 - 1953  
11380  
James M. O'Connell  
REGISTERED ELECTRICAL ENGINEER

COUNTY SUPERINTENDENT  
OF SCHOOLS

BOARD OF TRUSTEES  
FINAL APPROVAL  
Virginia O. Bellinger

FRANKLIN SCHOOL ADDITION  
BAKERSFIELD CITY SCHOOL DISTRICT  
BAKERSFIELD CALIFORNIA

C. B. ALFORD • ARCHITECT • W. J.  
602 HABERFELDE BUILDING  
BAKERSFIELD